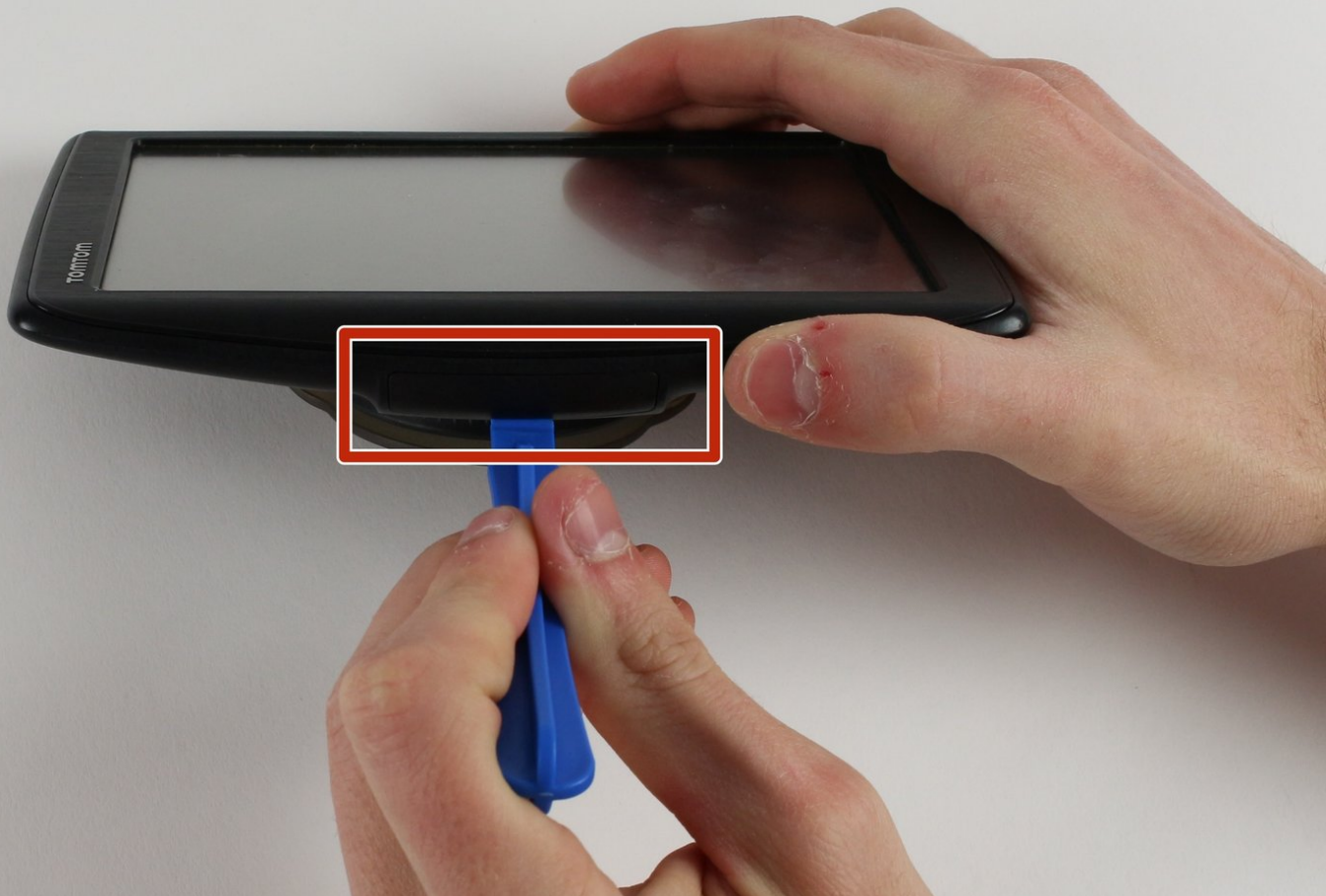




TomTom VIA 1530 TM Memory Card Replacement

This guide show how to properly remove their TomTom VIA 1530 TM's memory card in order to increase memory capability.

Written By: Jennifer Zakaria



INTRODUCTION

If the user wants to update the mapping system or gain more storage for their TomTom, replacing a full memory card will simply do the trick.



TOOLS:

- [iFixit Opening Tools](#) (1)
blue opening tool
-

Step 1 — Memory Card



- Lay the device flat with the screen facing up and the rectangular Memory Card compartment cover visible.
- Wedge the plastic opening tool into a crease of the compartment cover and lift up.
- ⓘ Our device does not have a Memory Card.
- Press gently on the memory card and it will pop out of the device.

To reassemble your device, follow these instructions in reverse order.