



TomTom VIA 1530 TM Screen Replacement

This guide will show how to properly remove the TomTom VIA 1530 TM screen.

Written By: Jennifer Zakaria



INTRODUCTION

The TomTom touch screen can stop working or stop responding altogether. This guide will show how to properly remove it.



TOOLS:

- [JIS #00 Screwdriver](#) (1)
 - [T5 Torx Screwdriver](#) (1)
 - [iFixit Opening Tools](#) (1)
 - [Metal Spudger](#) (1)
-

Step 1 — Back



- Position the device so that the underside is facing up.
- Tilt the EasyPort Mount slightly upward and rotate it counterclockwise 180 degrees from the initial position.
- Firmly grab the EasyPort Mount and remove it.
- ⓘ If it does not dislodge easily, gently twist the EasyPort Mount, applying increasing pressure until it does.

Step 2



- Turn the device 180 degrees so the screw in the EasyPort Mount compartment is on top.
- Remove the 2mm screw beneath the EasyPort Mount compartment with the Torx T-5 head Screwdriver.

Step 3



- Flip the device over so that the screen is facing up.
- Wedge the plastic opening tool between the top and bottom of the device's frame, gently sliding it around the outside edge.
- ⓘ It may be easier to start at one of the corners.
- ⚠ The gold ribbon cable connecting the screen to the motherboard is fragile and tears easily.
- ⓘ This specific device's ribbon cable is torn.

Step 4



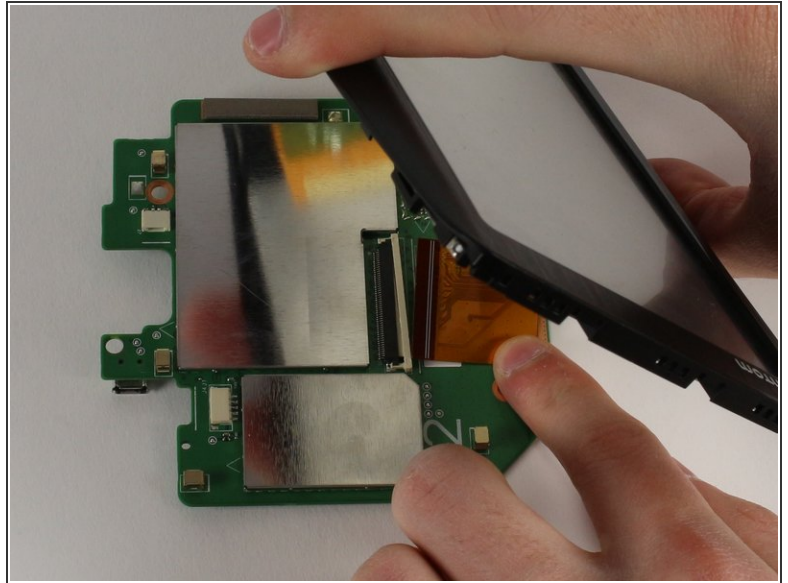
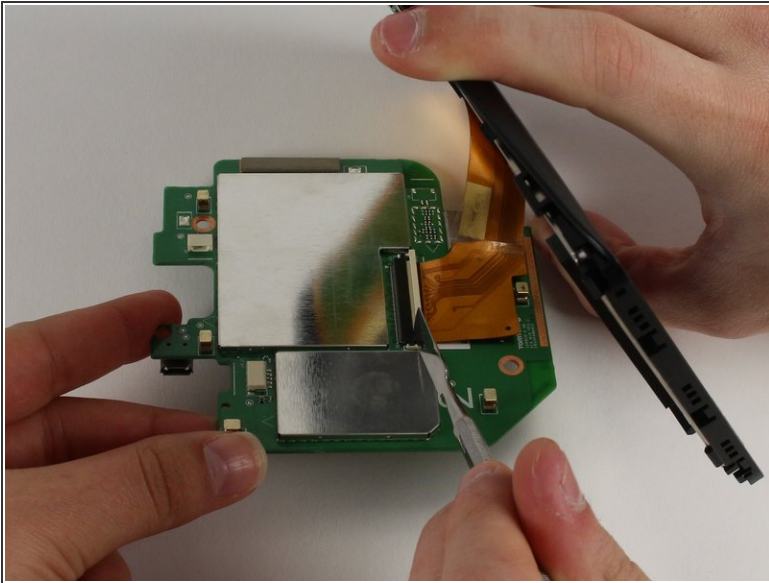
- Carefully slide the screen forward, revealing the lower portion of the motherboard.
- Remove the 3.6mm screw using the JIS #00 Screwdriver.
- Rotate the device 180 degrees, carefully slide back the screen, and remove the remaining two screws.

Step 5



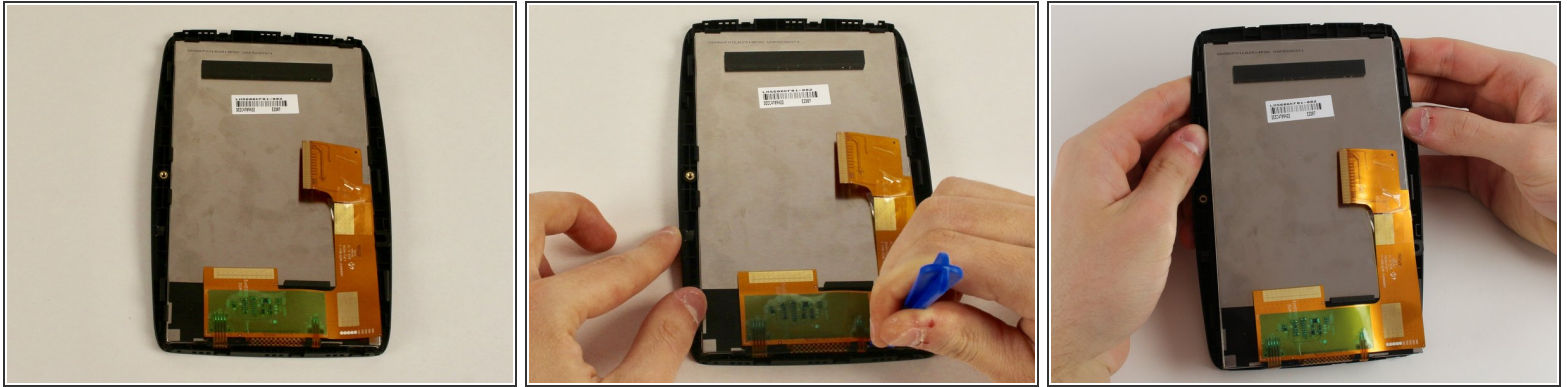
- Disconnect the battery and speaker cables.
- Unlatch the motherboard from the case.

Step 6 — Motherboard



- Wedge a spudger between the white plastic latch and the black connection port, disconnecting the gold ribbon cable.
- Slide the gold ribbon cable out of the port.

Step 7 — Screen



- Use a plastic opening tool to unlatch the screen from its case.
- ⓘ We recommend starting on the side with the gold ribbon cable as the latches are more tricky.
- ⓘ Unlatch the screen corner by corner instead of an entire side at one time.
- ⓘ The tearing sound is the adhesive holding the screen to the case. It will re-stick when you put the screen together.

To reassemble your device, follow these instructions in reverse order.