



# TomTom VIA 1605TM Back Cover Replacement

The back screen is damaged/ cracked and needs to be replaced.

Written By: Tyler Wade



---

## INTRODUCTION

GPS may be dropped and the back screen is cracked/damaged. When prying do not use metal tools as this can cause static damage. The device can be identified by its model number which is located under the small panel on the bottom of the device.

---

### TOOLS:

- [JIS #1](#) (1)
  - [iFixit Opening Tools](#) (1)
  - [Spudger](#) (1)
-

## Step 1 — Front Screen



- Locate the round suction cup on the back of the device.
  - Twist the suction cup clockwise or counterclockwise while pulling back away from the device closer to your body until removed.
- ☒ When reassembling twist the suction cup but, push in as oppose to pulling out.

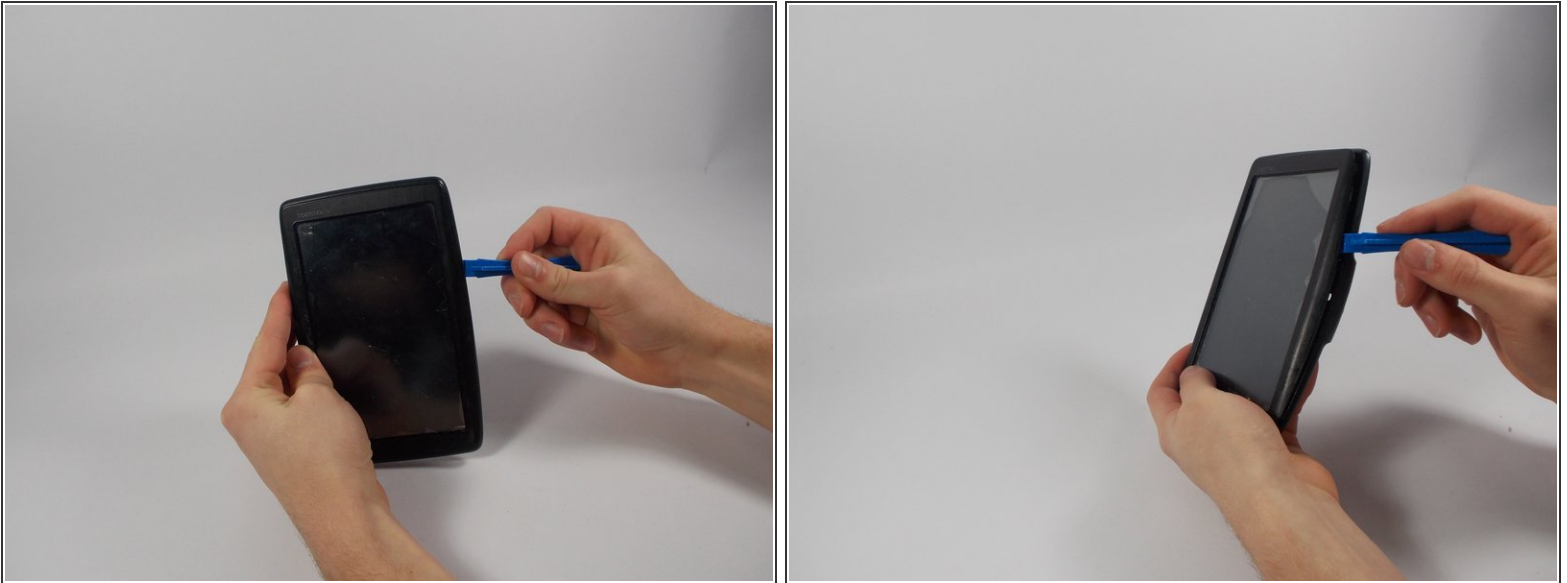
## Step 2



- Location of screw is where the suction cup was.
  - Insert 8mm Hex #T6 screw driver into screw.
  - Unscrew in counter clockwise direction.
- ☒ When reassembling screw in the clockwise direction.



### Step 3



- Pry along the edges with the plastic opening tool to separate the back and front panel.

⚠ Try not to tear the screen open as you may break the part. Go about this gently but with enough force to remove the screen.

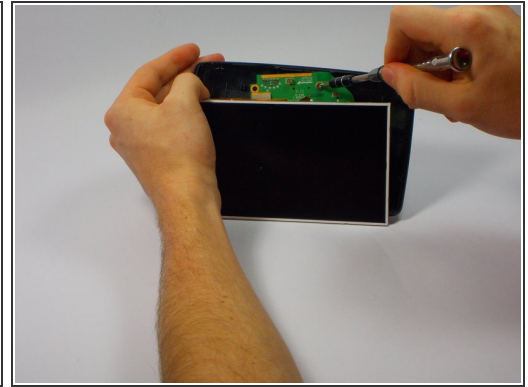
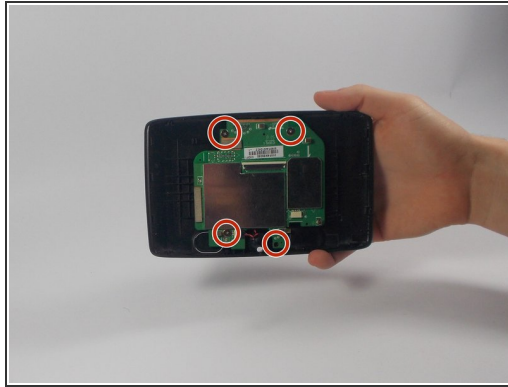
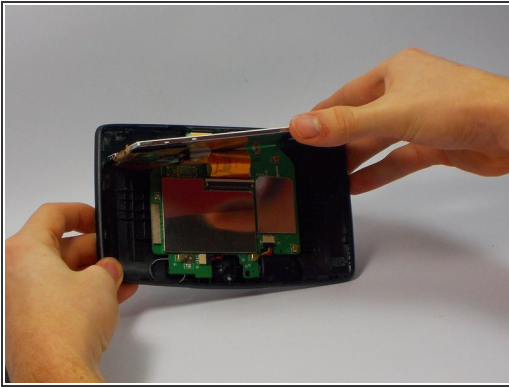
### Step 4



- Place the new front panel (with new screen) on to the back panel. Press firmly along the edges to attach.

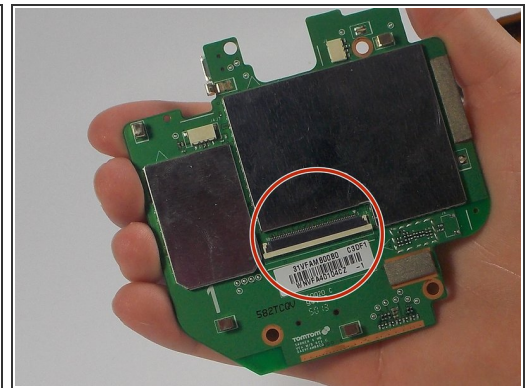
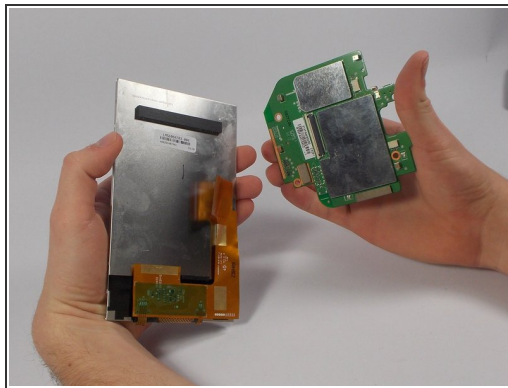
☑ Only do this step of placing the front panel on if you are completed. If there are still components needed replacing postpone this step until the end.

## Step 5 — Motherboard



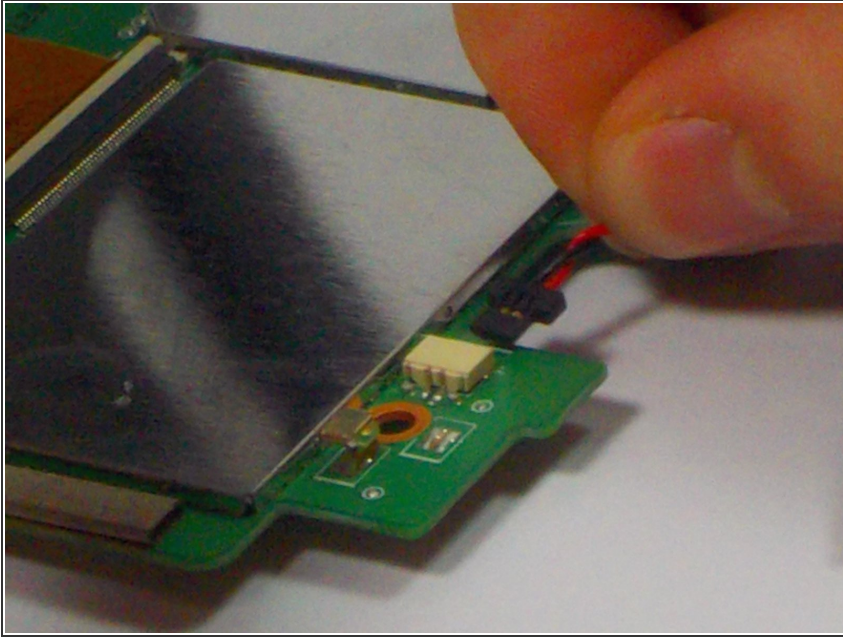
- Keep the TOMTOM oriented so the curve is on the bottom. Locate the four 1mm Philips #J1 head screws attached to the motherboard.
- Unscrew each of these in a counter clockwise direction.
- ☑ When reassembling screw back in a clockwise direction.
- ⓘ The second picture is to represent where the four screws are located. The LCD screen does not disconnect from the motherboard until the next step.

## Step 6



- Remove the Blue Ribbon Cable by pushing each side of the plastic holder with the nylon spudger.
- This will remove the LCD screen from the motherboard.

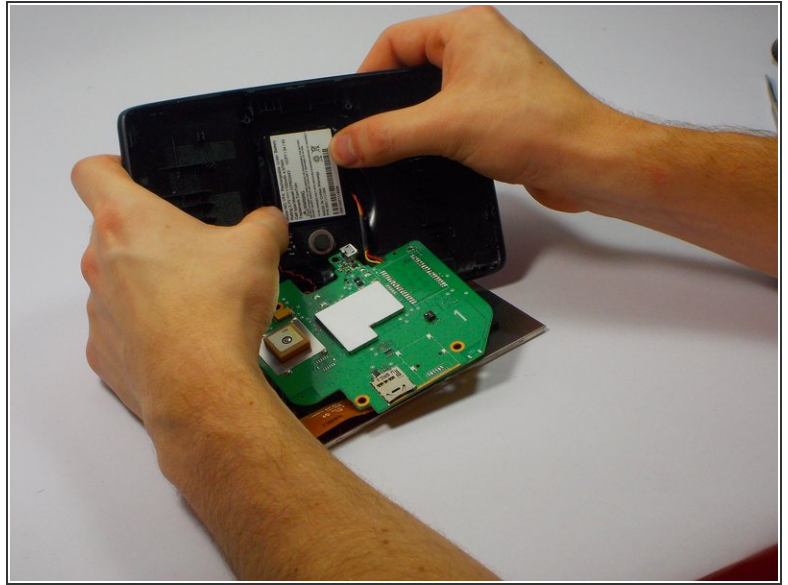
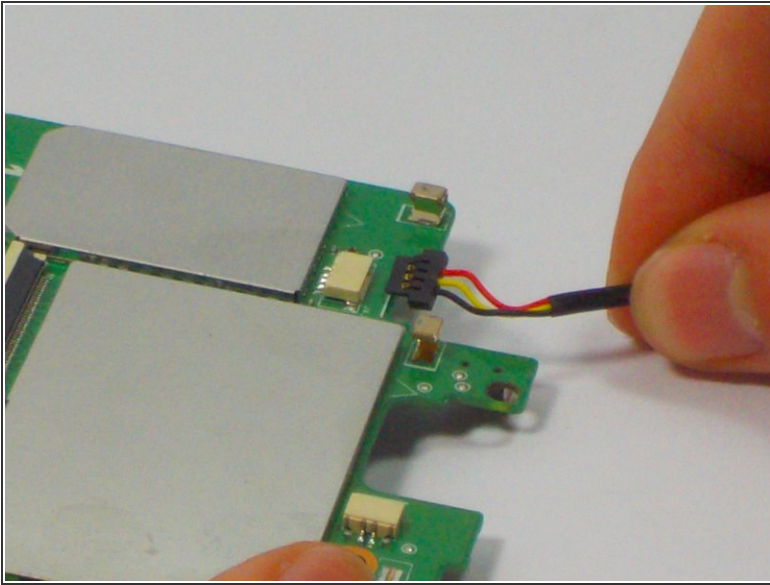
## Step 7



- Unplug the wire connecting to the speaker by pinching the sides connected to the back screen.
- Pull back away (in the opposite direction) from the connector.
- ★ When reassembling push back into connector. Do not need to pinch anything. The "click" sound ensures solid connection.

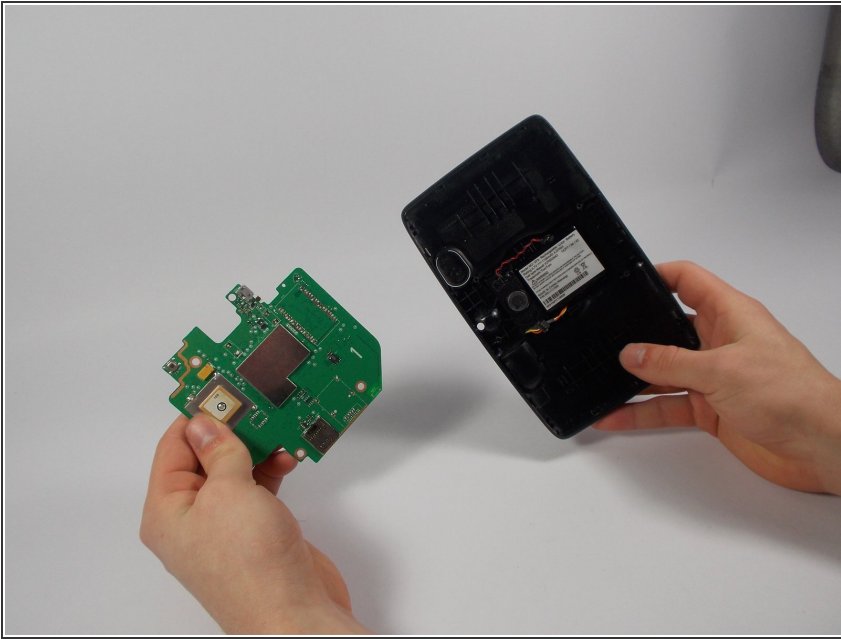


## Step 8



- Unplug the battery, the same way we unplugged the speaker by pinching the sides of the connection.
- Pull away from the connector
- ☑ When reassembling push back into connector. Do not need to pinch anything. The "click" sound ensures solid connection

## Step 9



- Properly dispose of the old motherboard. Replace with the new motherboard.
- ☑ Skip this step(i.e. do not dispose of motherboard) if this part of prerequisite guide for the back cover replacement.

## Step 10 — Back Cover



- Replace the back cover screen, now that all parts have been properly removed.

To reassemble your device, follow these instructions in reverse order.