



TomTom XL Battery Replacement

Written By: Sean Higginson



INTRODUCTION

Guide to replace the battery in the Tom Tom XL.



TOOLS:

- [iFixit Opening Tools](#) (1)
- [Flathead 3/32" or 2.5 mm Screwdriver](#) (1)
- [Phillips #00 Screwdriver](#) (1)



PARTS:

- [Replacement Battery for Tom Tom XL](#) (1)

Step 1 — Screen and Motherboard



- Slip a small plastic opening tool underneath the screen bezel, gently sliding it around the inside edge.
- Starting at the corners, carefully pry up the screen bezel.

Step 2



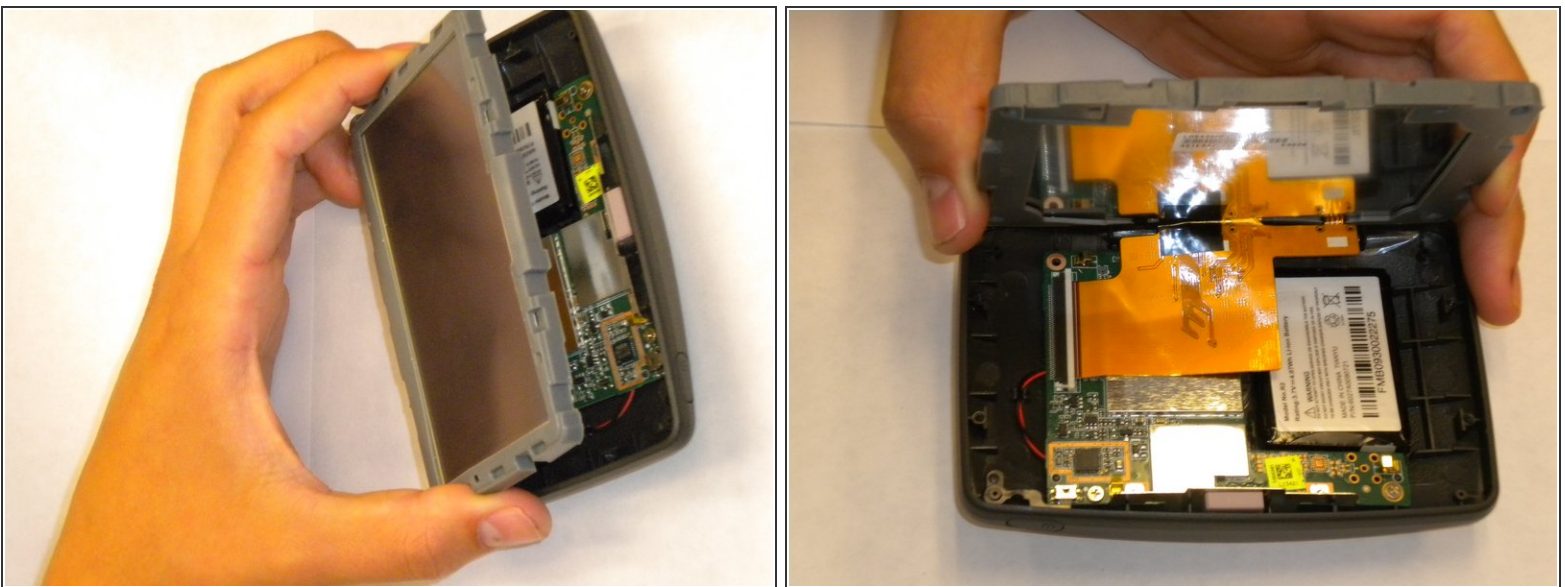
- Remove the four Phillips #00 screws around the edge of the screen.

Step 3



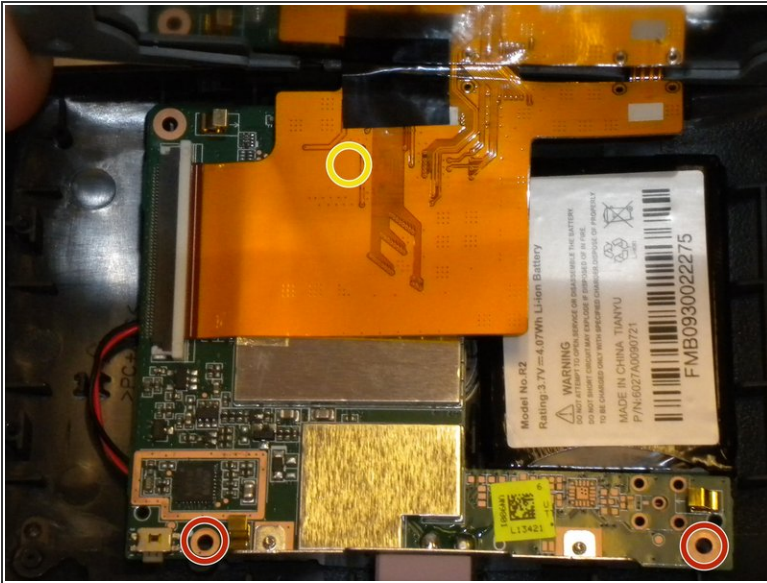
- Slide a small plastic opening tool under the top portion of the metal frame and gently lift it up.
- Slide the plastic opening tool around the inner edge of the metal frame until it feels loose.
 - ⓘ It may take some time to release the frame from the housing. Some force may be necessary—but be careful not to bend the frame's fragile interior bracket.
- Remove the frame from the housing.

Step 4



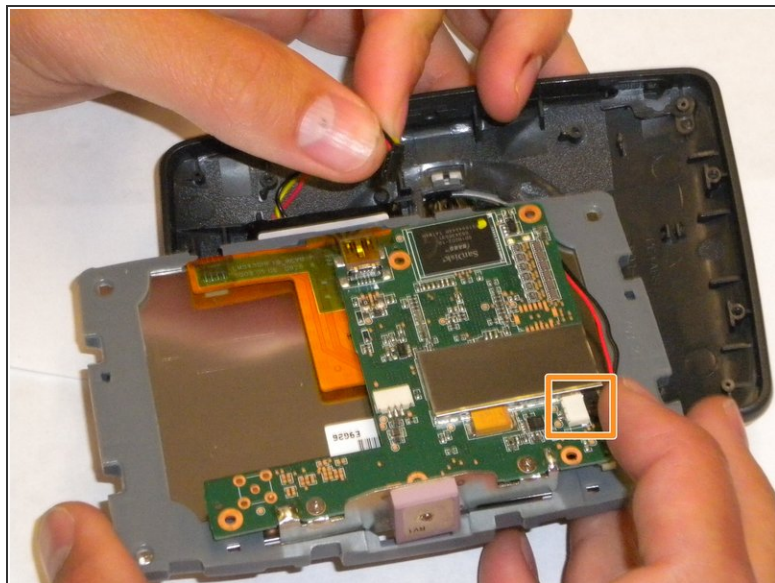
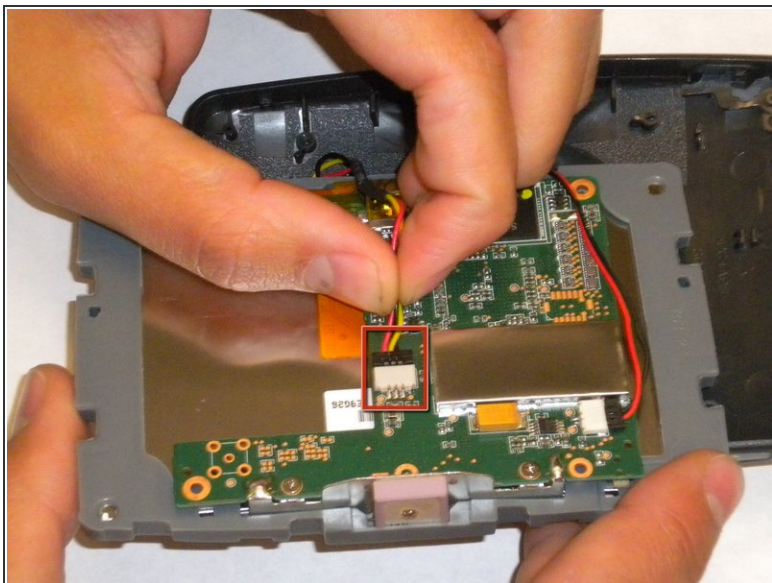
- Lifting from the upper edge of the screen, tilt the screen away from the device.
- ⚠ Tilt the screen slowly. Flipping the screen up too quickly may damage the display cable.

Step 5



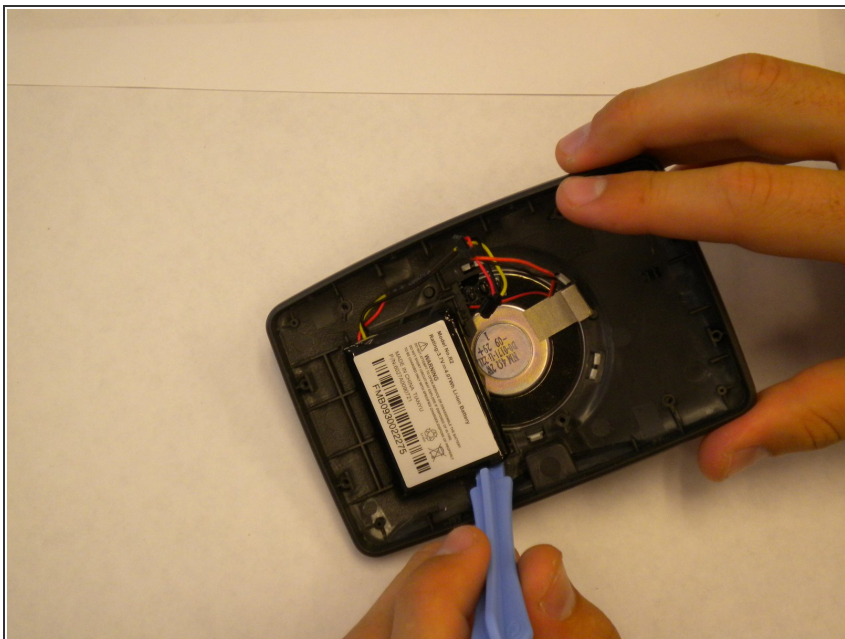
- Remove the three Phillips #00 screws connecting the motherboard to the plastic housing:
 - Two Phillips #00 screws are located at the bottom of the first picture.
 - The third screw is hidden under the orange ribbon cable, near the screen.
 - ⓘ You may have to carefully lift the screen in order to reach this screw.

Step 6



- Flip the screen and motherboard over.
- Gripping the plastic casing, disconnect the battery cable connector from the motherboard.
- Disconnect the speaker cable connector from the motherboard.
- Remove the motherboard and screen from the housing.

Step 7 — Battery



- Slip a small plastic opening tool under the battery and slowly pry the battery up.
- ⚠ The battery is held on with strong adhesive, so it may require some force. Work slowly and carefully to avoid damaging the housing
- Remove the battery from the housing.

To reassemble your device, follow these instructions in reverse order.