



# TomTom XXL 540 Back Panel Replacement

This guide will show you how to replace the back panel of your TomTom XXL 540.

Written By: Mike Sollars



---

# INTRODUCTION

This guide shows how to replace the back panel on a TomTom XXL 540.

---



## TOOLS:

- [T5 Torx Screwdriver](#) (1)
  - [Tweezers](#) (1)
  - [Flathead Screwdriver](#) (1)
-

## Step 1 — Remove the screws



- Using tweezers, peel back the sticker on the bottom of the device to reveal the two T5 screws.
- Use the T5 Torx screwdriver to unscrew the two T5 screws.

## Step 2 — Remove the faceplate



- Use a flat edge screwdriver to pry open the faceplate.



### Step 3 — Remove the ribbon cable



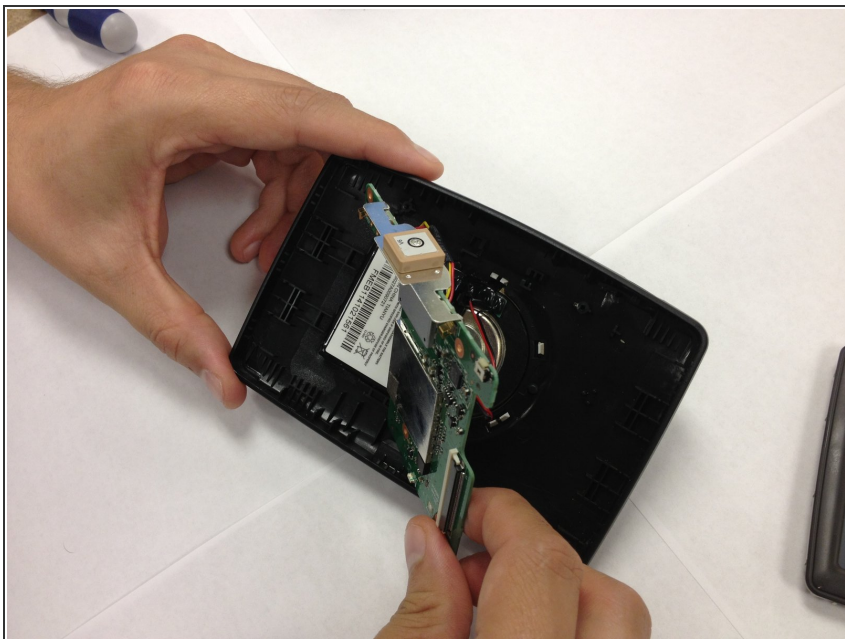
- Release the ribbon cable that connects the two sides.

### Step 4 — Remove the screws from the motherboard



- Identify the green motherboard.
- Use the T5 Torx screwdriver to unscrew the three T5 screws that hold the motherboard in place.

## Step 5 — Remove the board and battery



- Remove and disconnect the motherboard and battery from the back panel.

## Step 6 — Re-attach the board and battery



- Attach the motherboard and battery to the new back panel.

To reassemble your device, follow these instructions in reverse order.