



TomTom XXL 540 Battery Replacement

This guide walks you through replacing the battery to a TomTom XXL 540.

Written By: Mike Sollars





TOOLS:

- [T5 Torx Screwdriver](#) (1)
-

Step 1 — Battery



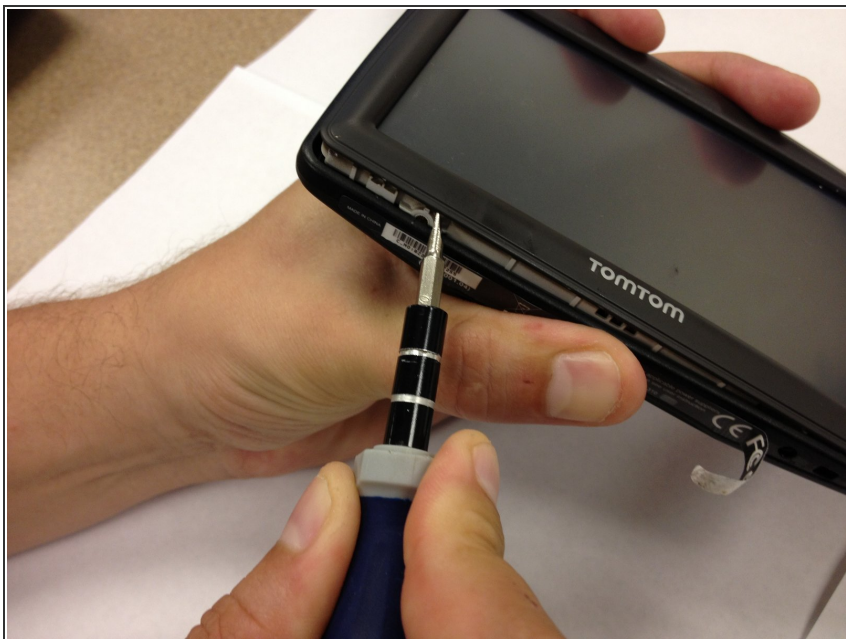
- Peel back the sticker on the bottom of the device to reveal the two screws.

Step 2



- Unscrew the two T5 Torx screws.

Step 3



- Wedge the flat head of the screwdriver into the edge of the device. Gently lift the screen from the cover.

Step 4



- Release the yellow ribbon cable.

Step 5



- Identify the green motherboard. Unscrew the three screws holding the board in place.

Step 6



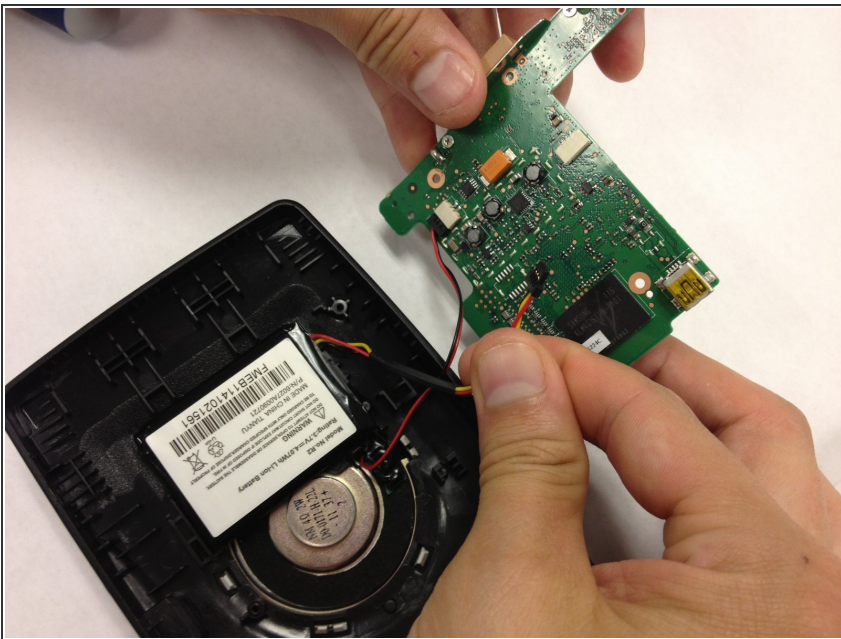
- Remove the motherboard from the back plate.

Step 7



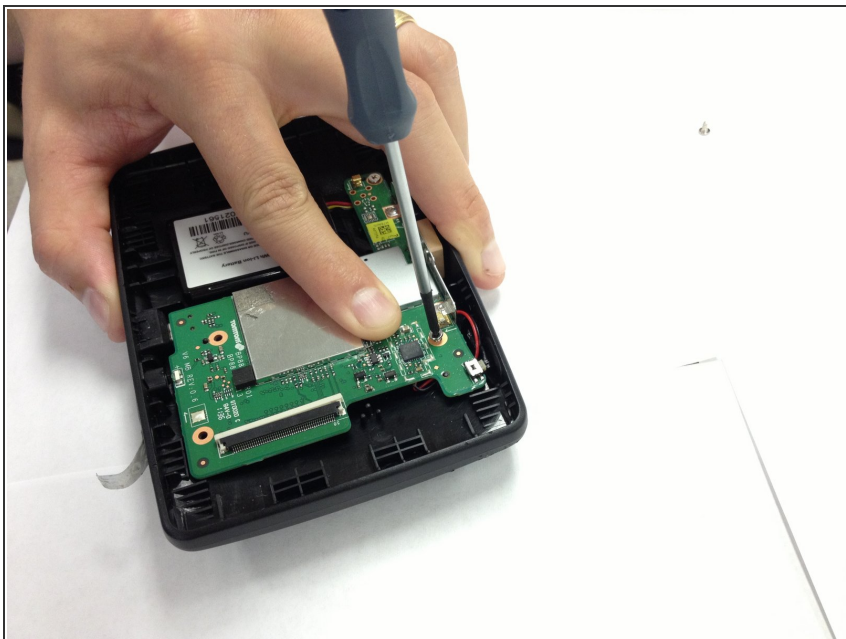
- Unplug the battery from the board.

Step 8



- Plug the new battery into the white receptacle on the green motherboard.

Step 9



- Transfer the green motherboard back into the back plate and secure it with the 3 screws.

Step 10



- Reconnect the yellow ribbon cable and connect the screen and back plate back together.

Step 11



- Insert the t-5 screws and tighten to secure.

Step 12



- Replace the label to cover the screws.

To reassemble your device, follow these instructions in reverse order.