



Tomado Blender Carbon Brush Replacement

This guide will teach you to change the carbon brushes in the motor of the blender. This is a common point of failure for common blenders.

Written By: Joel





TOOLS:

- [Phillips #0 Screwdriver](#) (1)
- [Phillips #2 Screwdriver](#) (1)
- [Soldering Iron](#) (1)

Step 1 — Carbon Brush



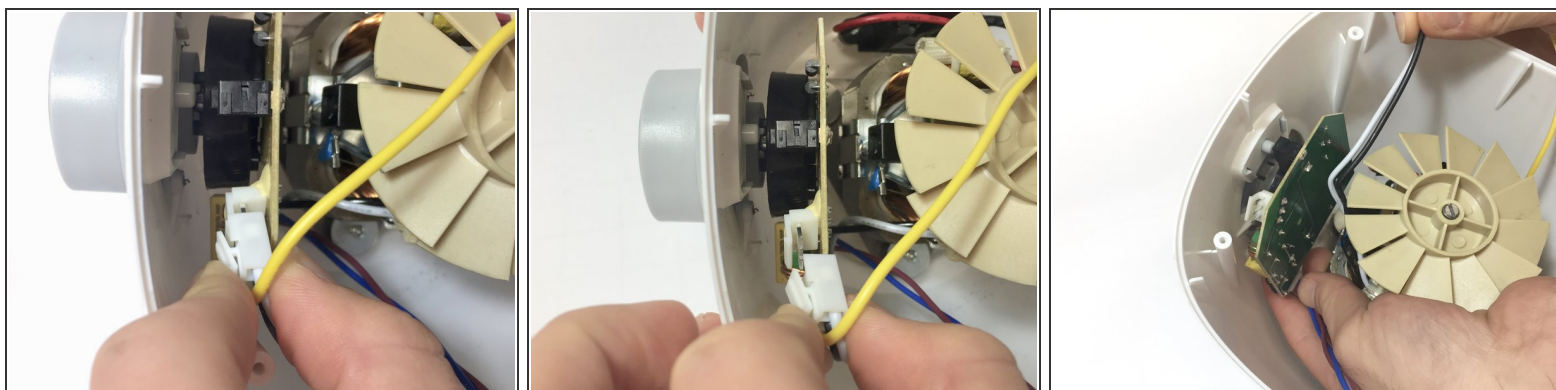
- Remove the base of the blender by removing the 4 screws at underneath..

Step 2



- Detach the base however do not separate it too far as it is still attached!

Step 3



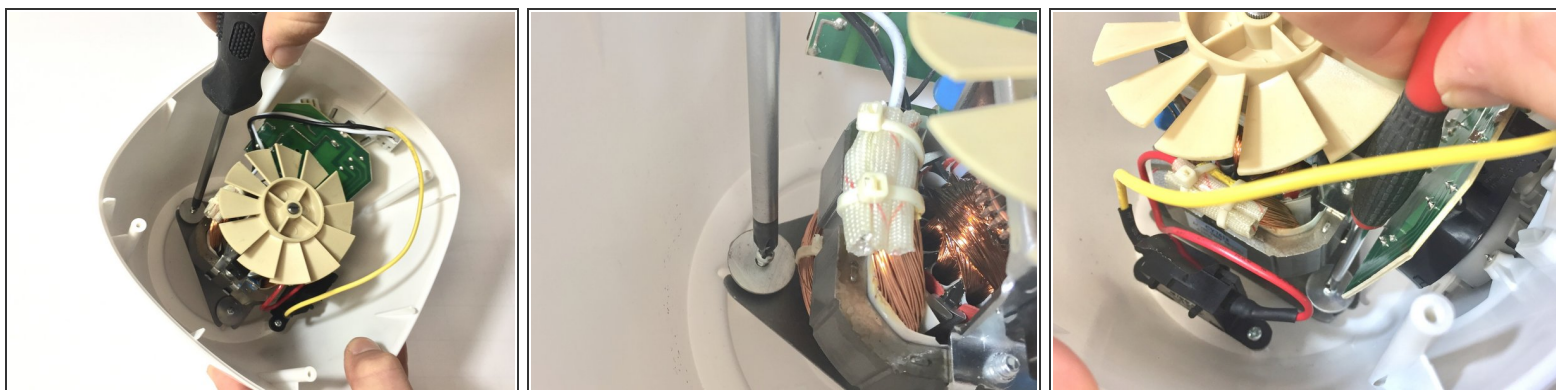
- Detach any cables/wires from the switch panel. They should be attached with an easy to remove pinch clip (just pinch to unclip).

Step 4



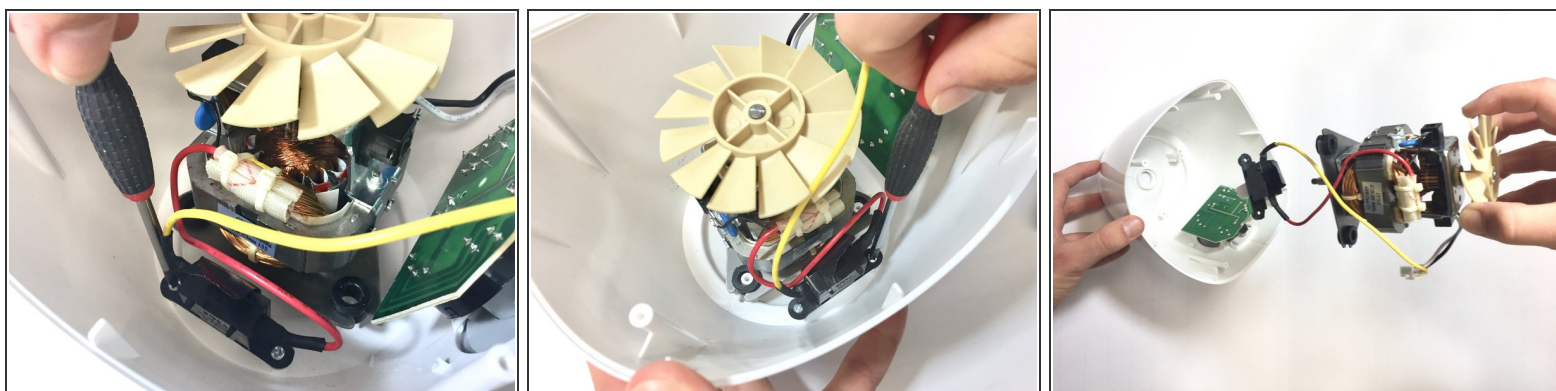
- Whilst holding the fan on the inside, unscrew the silicon grip on the top of the blender. This should unscrew with a small amount of force.

Step 5



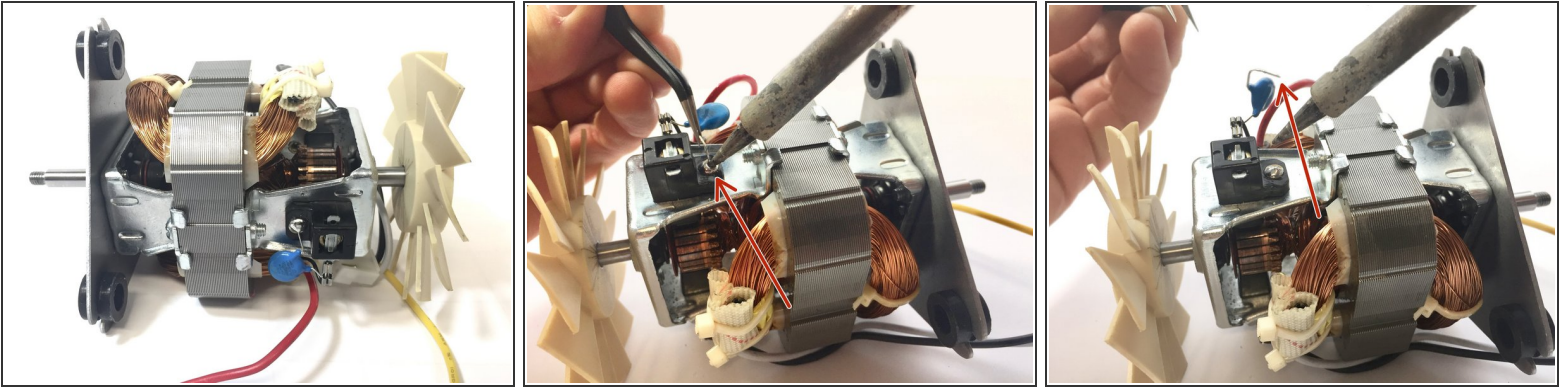
- Unscrew the 3 screws attaching the motor to the top of the case.

Step 6



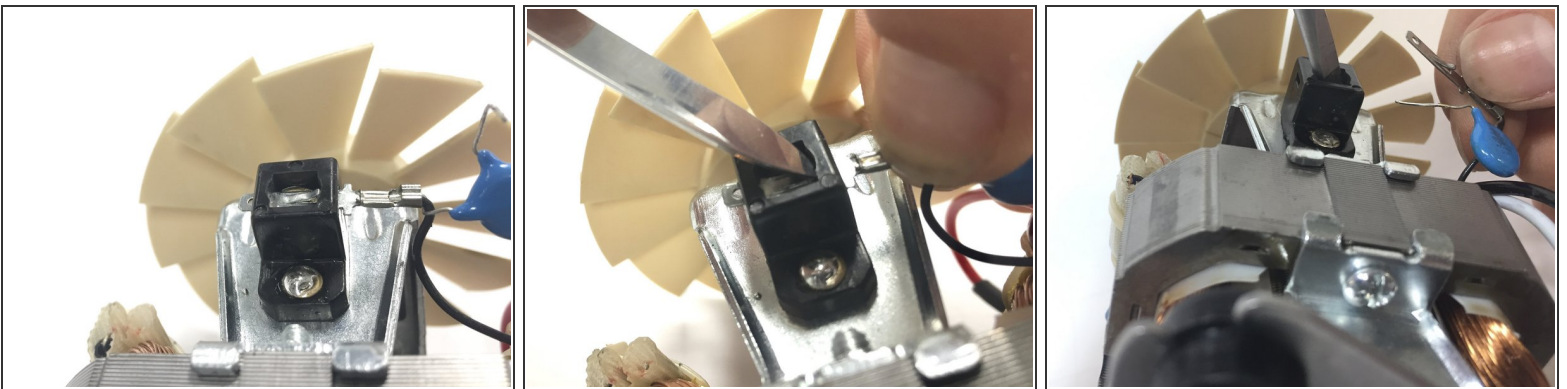
- Unscrew the black box holding the safety switch next to where the motor attaches to the case. You can now remove the motor from the case.

Step 7



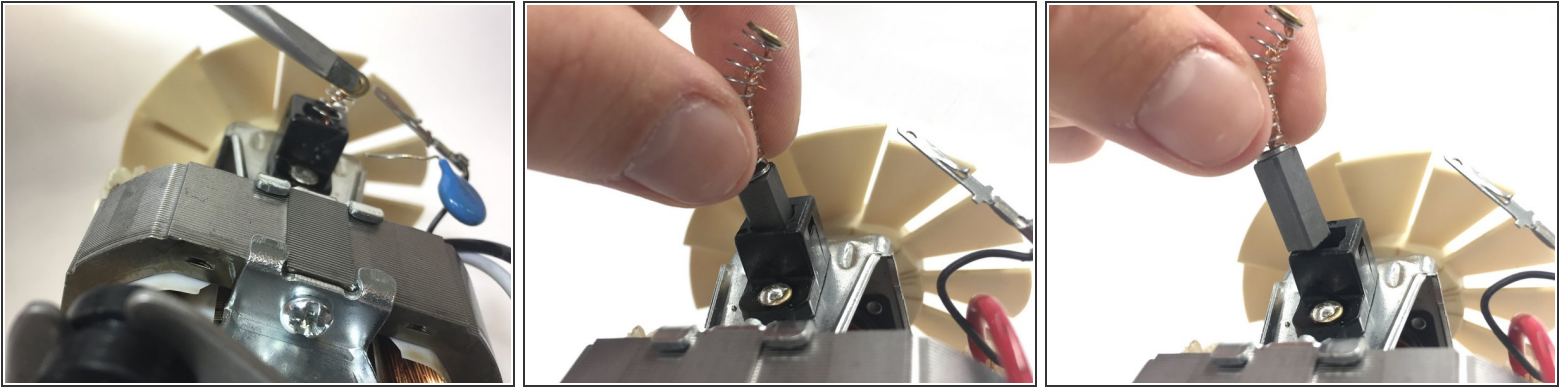
- Using a soldering iron, heat up the solder attaching the capacitor to the side of the motor. This needs to be repeated on the other side of the motor as there are 2 capacitors (positive and negative).

Step 8



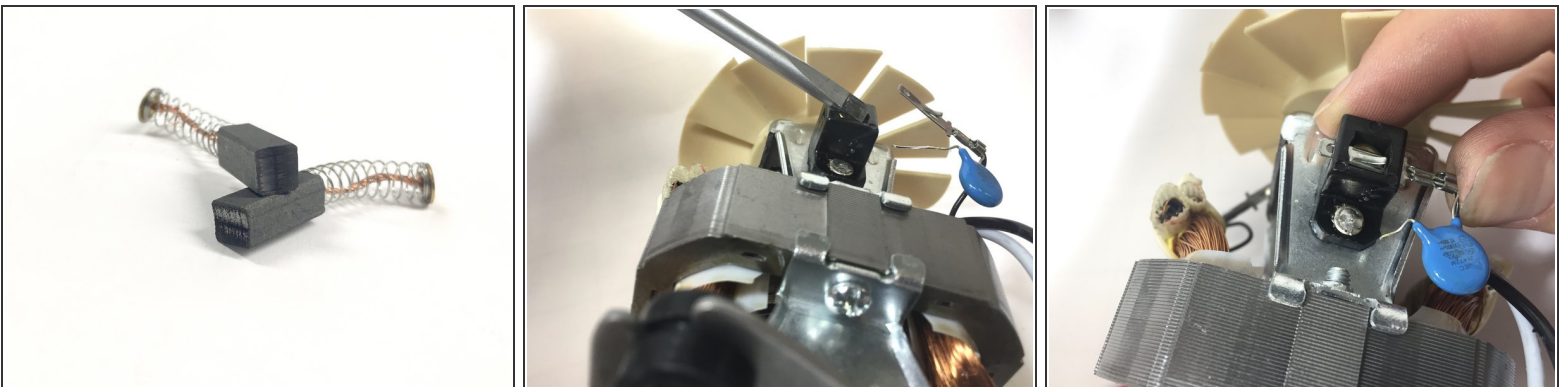
- Using a little pressure, insert a 02 Phillips screw driver into the little black slot next to where you desoldered the capacitor. Use this to hold down the clip that keeps it in place.

Step 9



- Once you have done this be careful when removing the carbon brushes as it is spring loaded.

Step 10



- You can now replace the brushes with new ones and return the clip to its original position. You will need to push the spring back into the slot and this may take some time. Repeat on the other side and your blender should be ready to make smoothie again!

To reassemble your device, follow these instructions in reverse order.