



# Tomado Rechargeable Vacuum Cleaner Disassembly

The disassembly manual for the Tomado rechargeable vacuum cleaner free. Type nr: 9502/08

Written By: Koen Tijhuis



---

# INTRODUCTION

Have fun with this great disassembly guide!



## TOOLS:

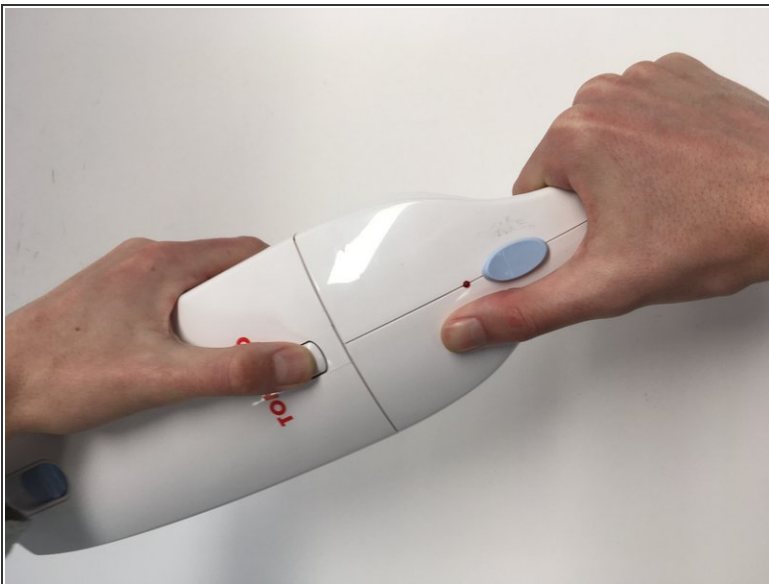
- [Phillips #1 Screwdriver](#) (1)
  - [Slip Joint Pliers](#) (1)
-

## Step 1 — Tomado Rechargeable Vacuum Cleaner Disassembly



- The full product in its original state.

## Step 2



- Remove the nozzle by pressing the white button on the top of the product just under the name of the brand.

### Step 3



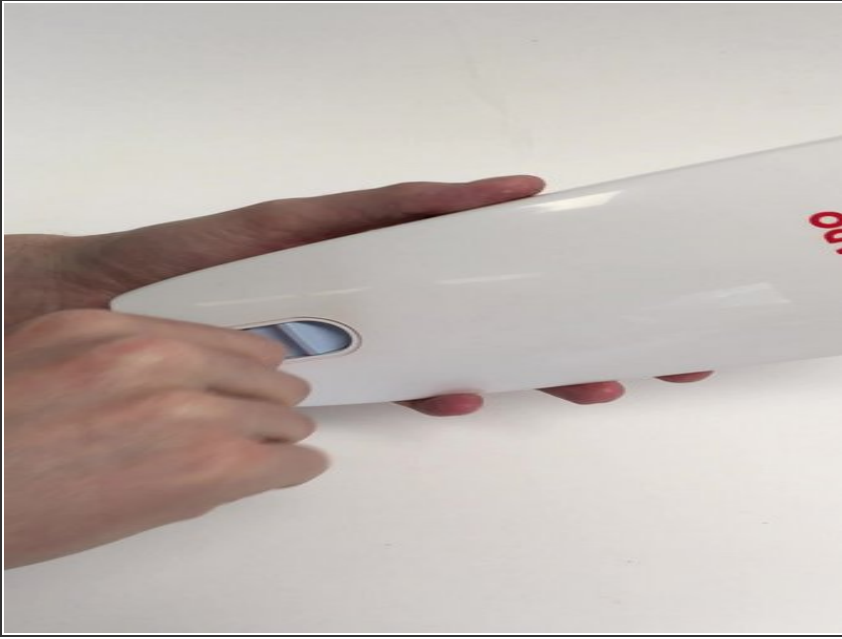
- Remove the big parts that are inside of the nozzle. These parts consist of a plastic structure with a filter.

### Step 4



- Remove the rubber fitting from the inside of the nozzle by pulling it from the metal pieces.

## Step 5



- Remove the blue switchbutton from the upper part of the nozzle by putting a momentum on the edge. After you have this signature move you can remove the brush. You can see the video for the signature move.

## Step 6



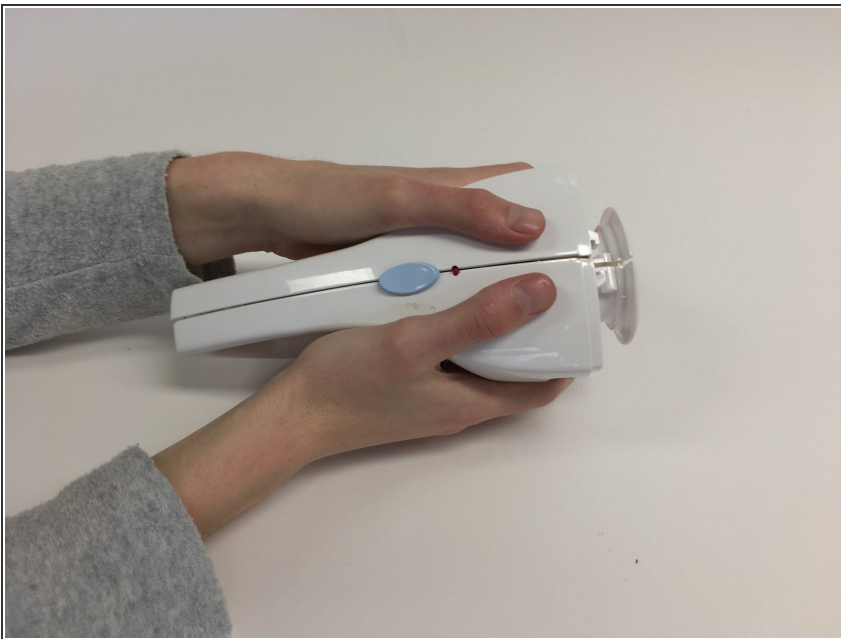
- Remove the blue switchbutton from the upper part of the nozzle by putting a momentum on the edge. After you have done this signature move you can remove the brush.

## Step 7



- Right now the whole nozzle is disassembled, except for two small steel rings. These will break if you try to remove them.

## Step 8



- Now the nozzle is disassembled we can start with the body.

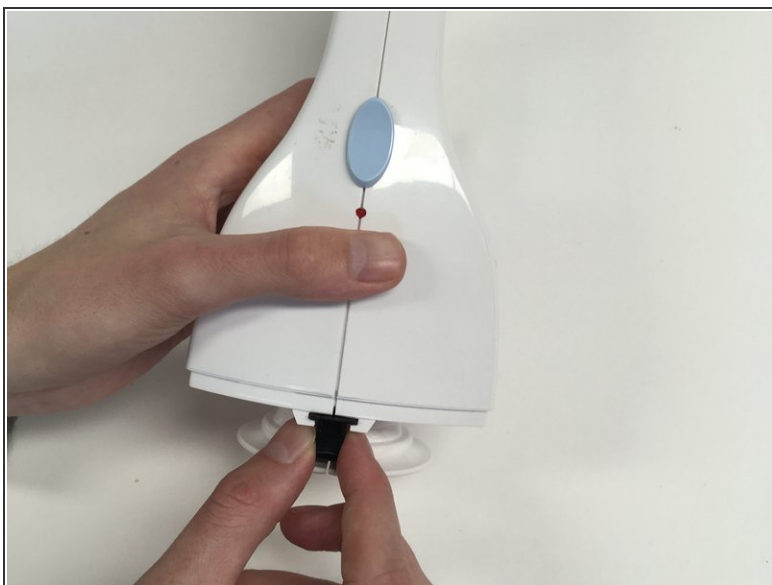


## Step 9



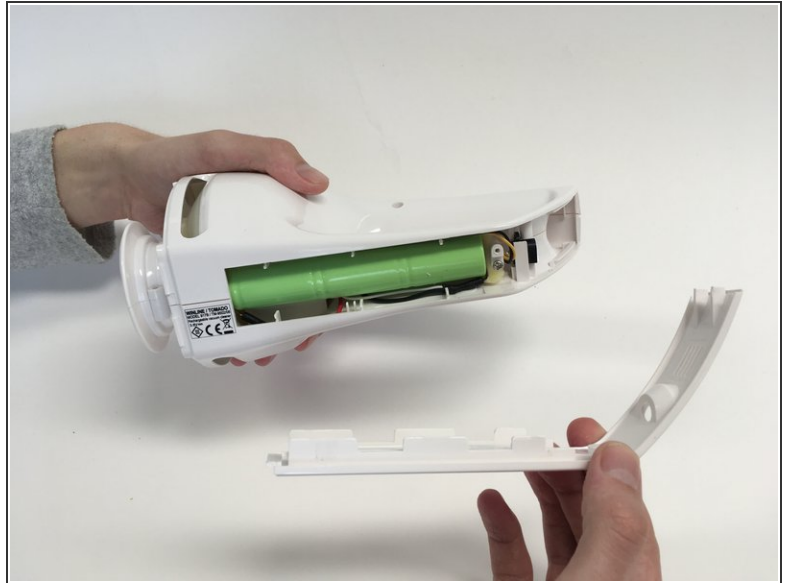
- Remove 4 screws on the side and 1 screw on the bottom. You'll do this by crosshead screwdriver size number 1.

## Step 10



- Remove the black clip from the inner top side of the body.

## Step 11



- Remove the lid from the battery lid by sliding it and after pull it out.

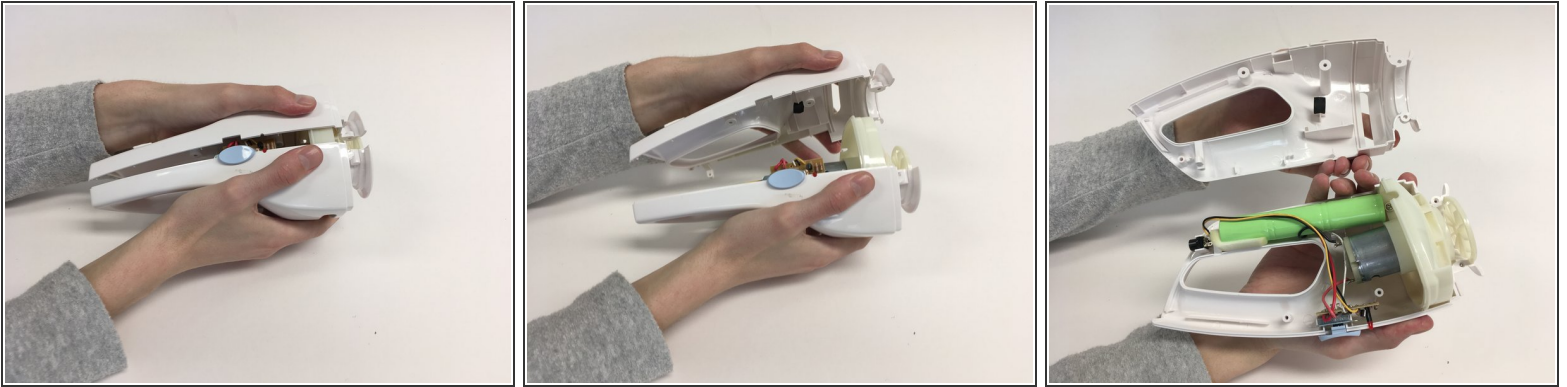
## Step 12



- Remove the screw after removing the lid above the battery.

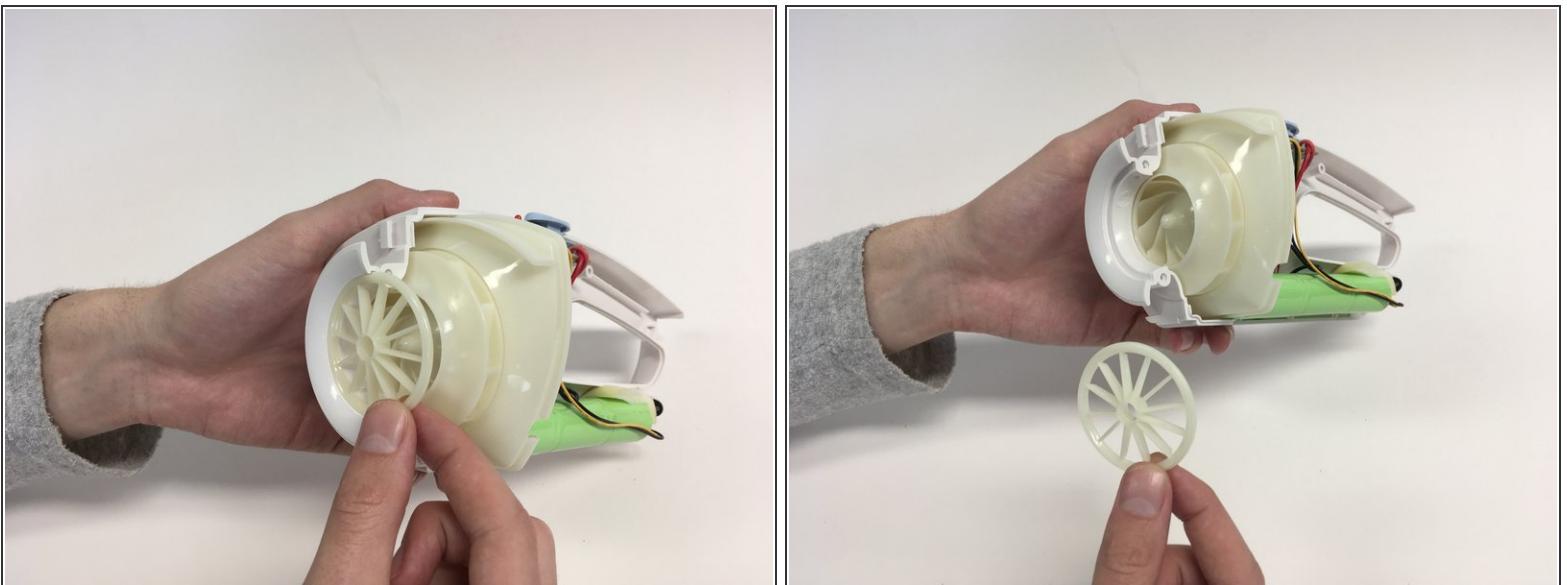


## Step 13



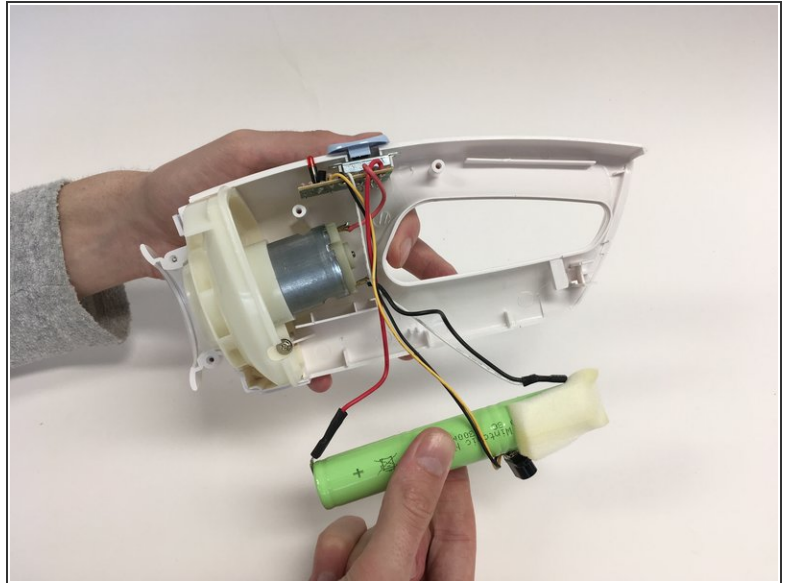
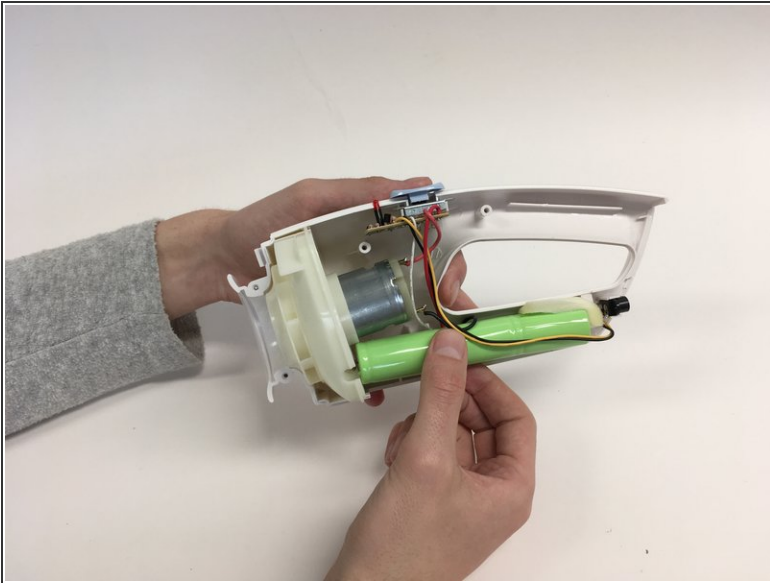
- Separate the two body parts.

## Step 14



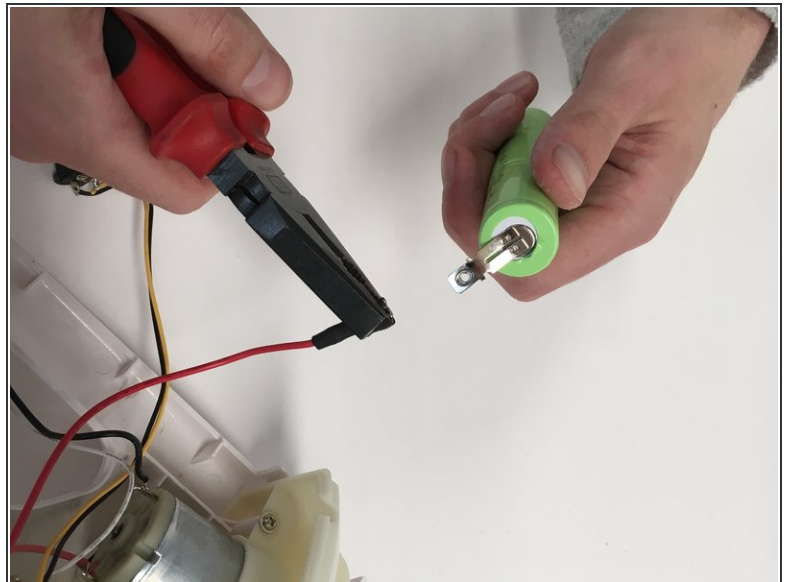
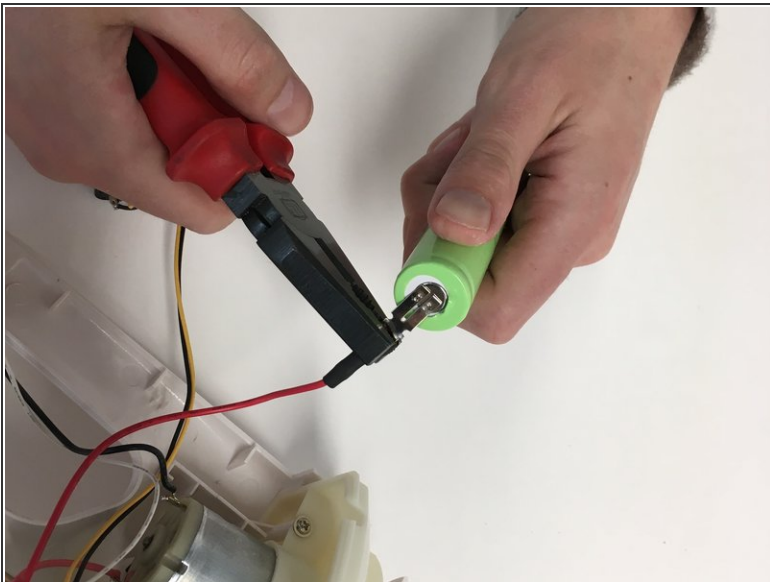
- Remove the turbine protector in front of the turbine.

## Step 15



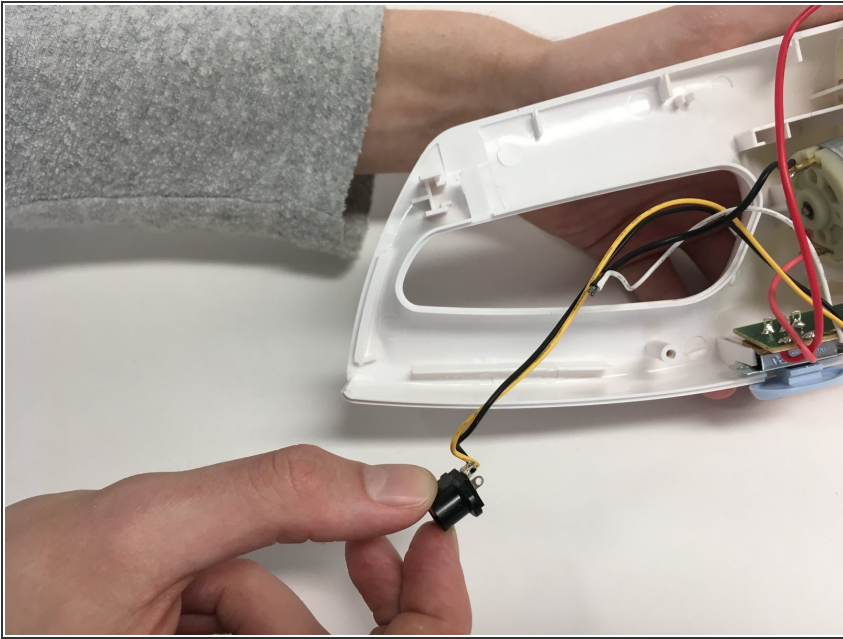
- Pull the battery out. It still has some wires attached to it.

## Step 16



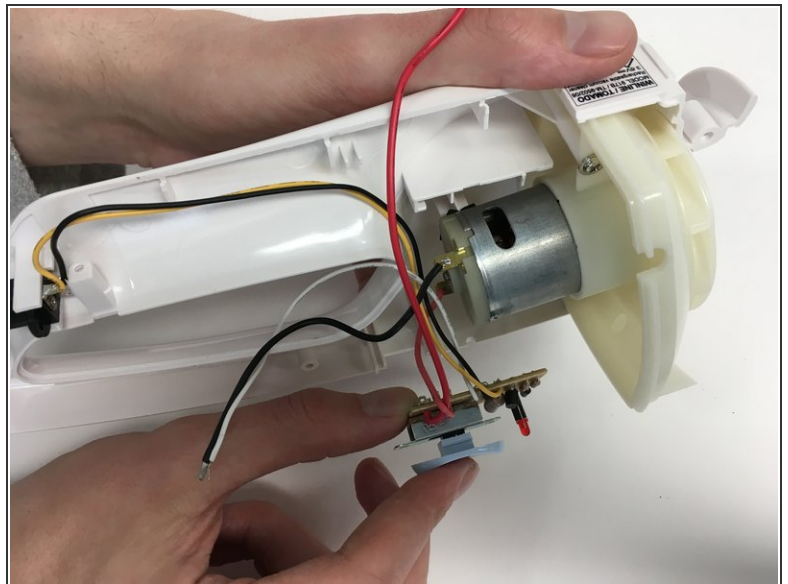
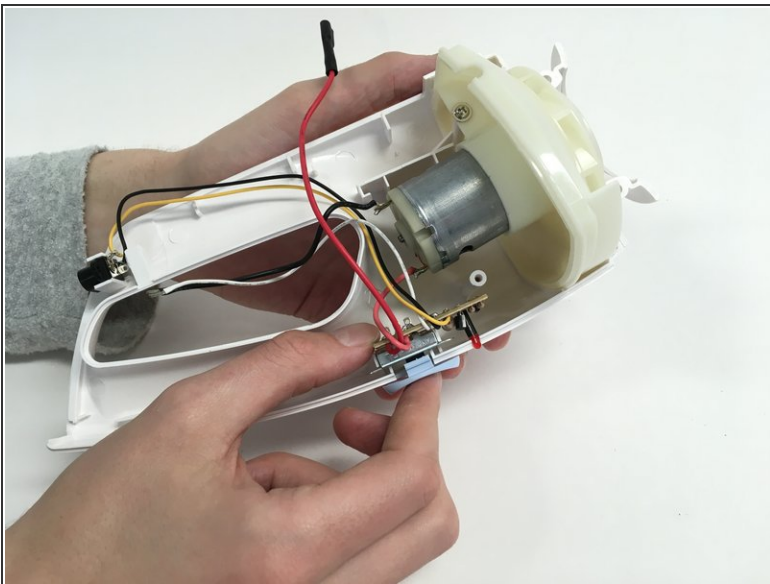
- Use the pliers to remove the wires from the battery.

## Step 17



- Pull the charge socket out of the plastic cover.

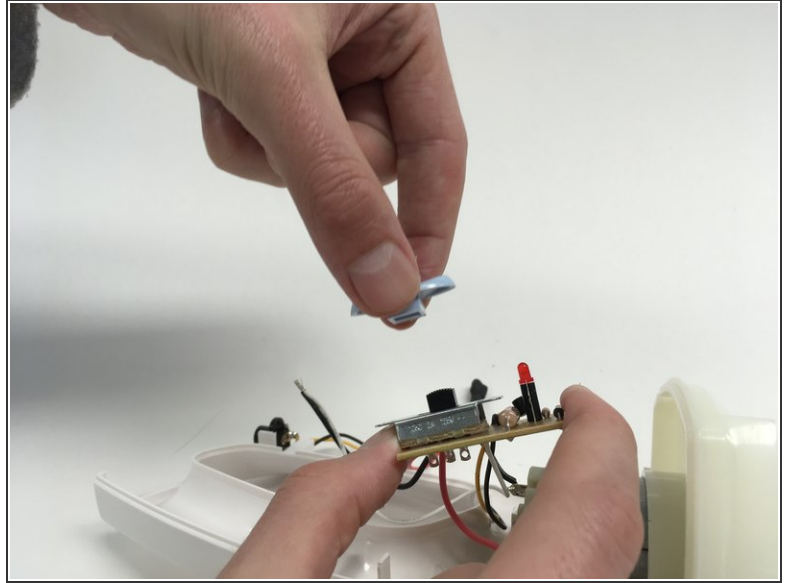
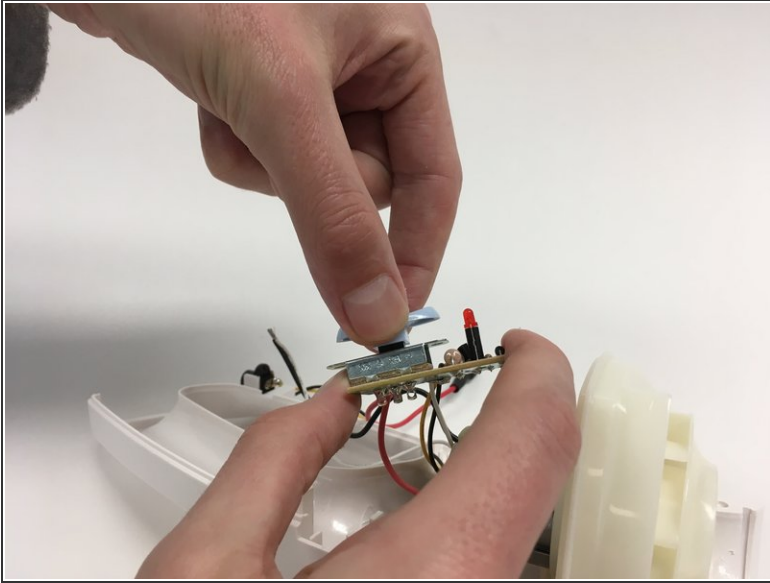
## Step 18



- Remove the button from the body.

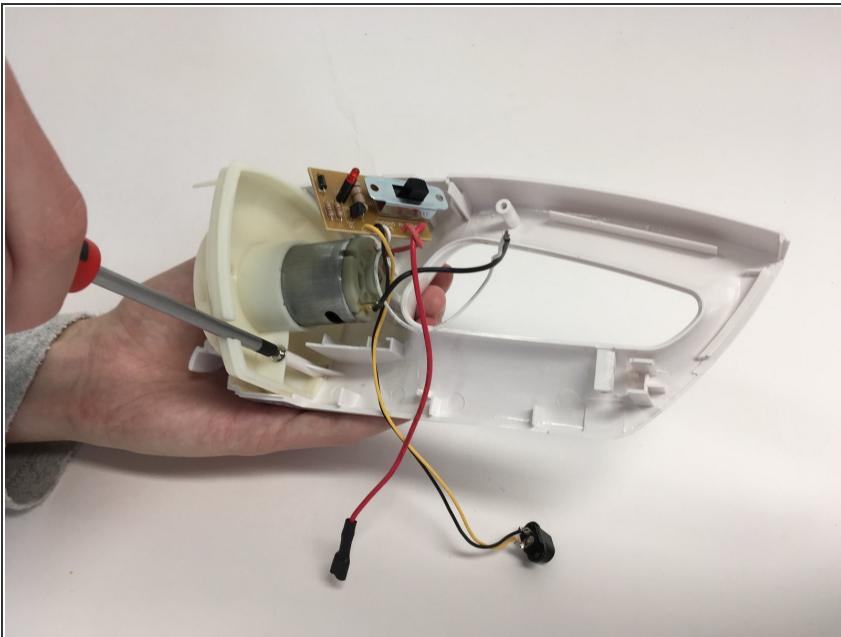


## Step 19



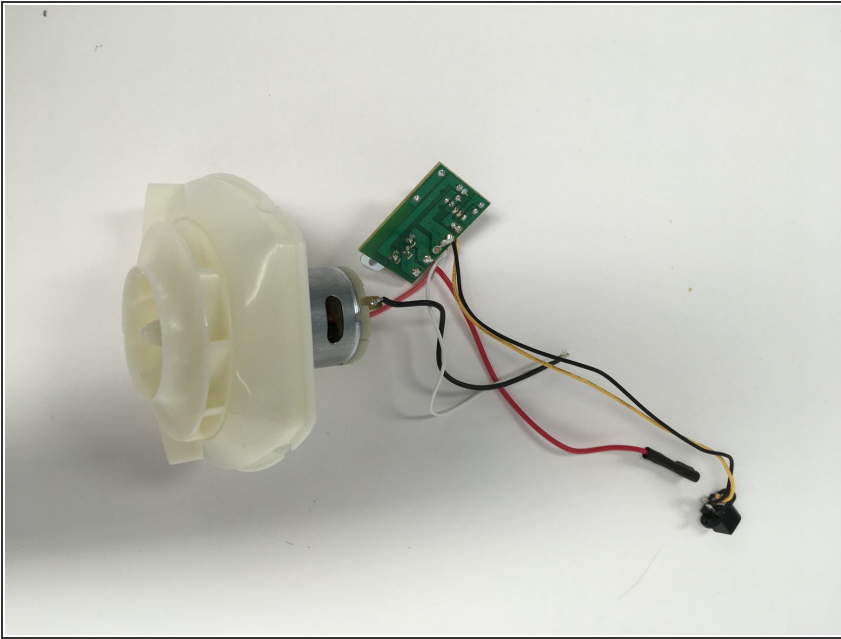
- Pull the button off the switch.

## Step 20



- Remove the last screw with a number 1 screwdriver, next to the electro motor to release the motor + turbine.

## Step 21



- The remaining part consists of moving pieces that cannot be disassembled.

To reassemble your device, follow these instructions in reverse order.