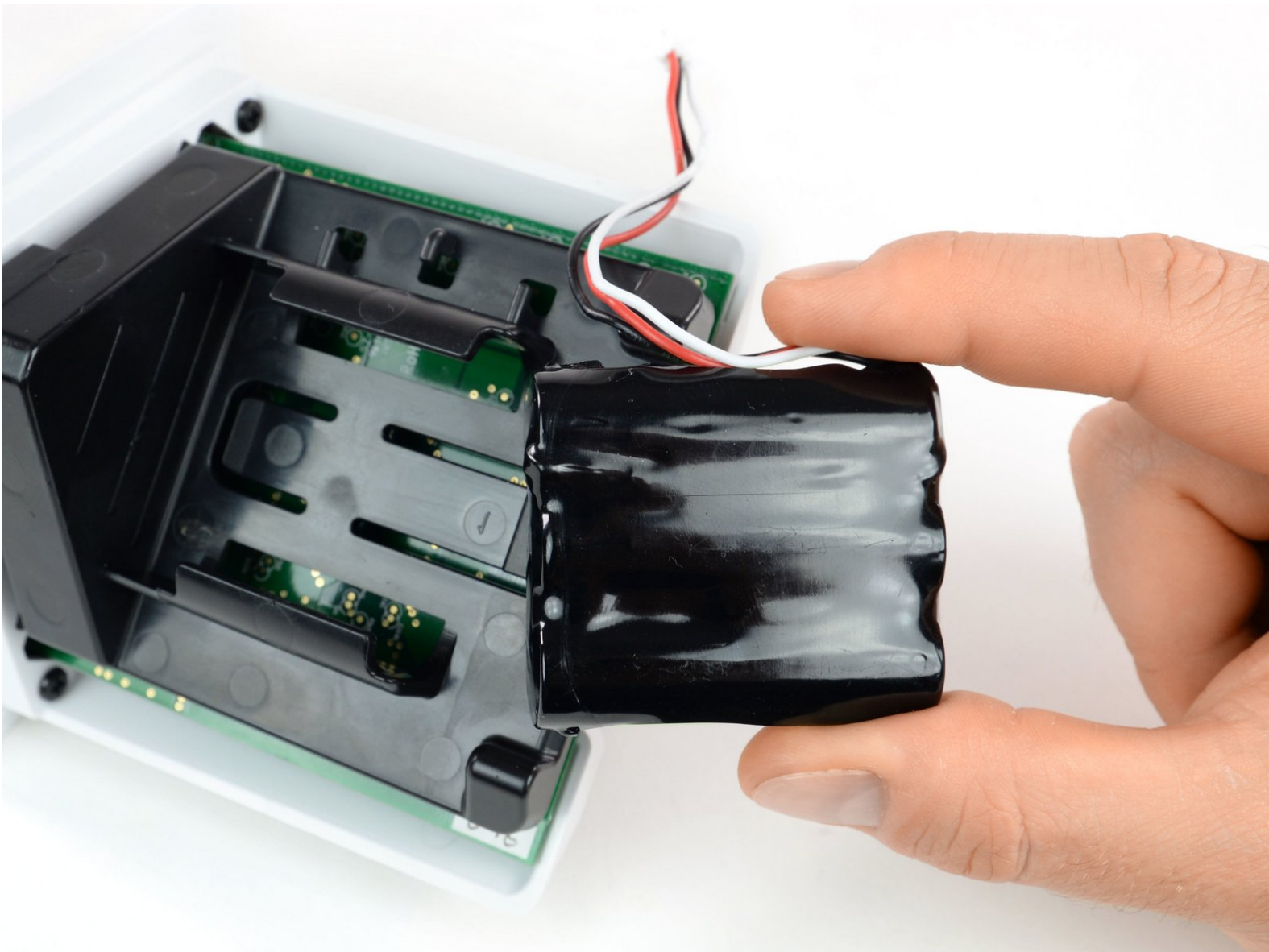




Toniebox Battery Replacement

This guide shows you how to remove an old or worn out battery in the Toniebox.

Written By: Tobias Isakeit



INTRODUCTION

Use this guide to remove an old or worn out battery in your Toniebox.



TOOLS:

- [Phillips #1 Screwdriver](#) (1)
- [Spudger](#) (1)



PARTS:

- [Toniebox Replacement Battery](#) (1)

Step 1 — Toniebox Opening Procedure



- Put the Toniebox on a flat surface (e.g. a desk or a workbench).
- Apply some pressure and turn the Toniebox counterclockwise to unlock the two clips beneath the bottom plate.
- ⓘ You will hear a "click" when the two clips unlock.

Step 2



- Remove the bottom plate.

Step 3



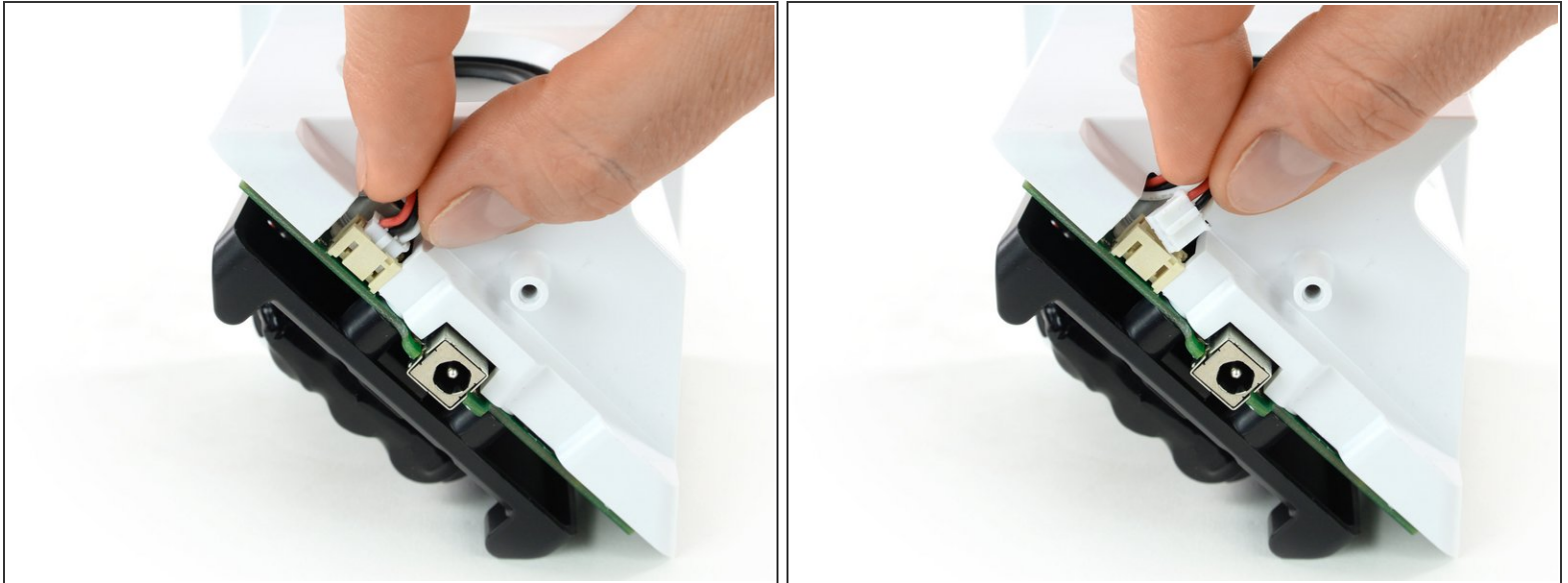
- Remove the Phillips #1 screw on the bottom of the Toniebox.

Step 4



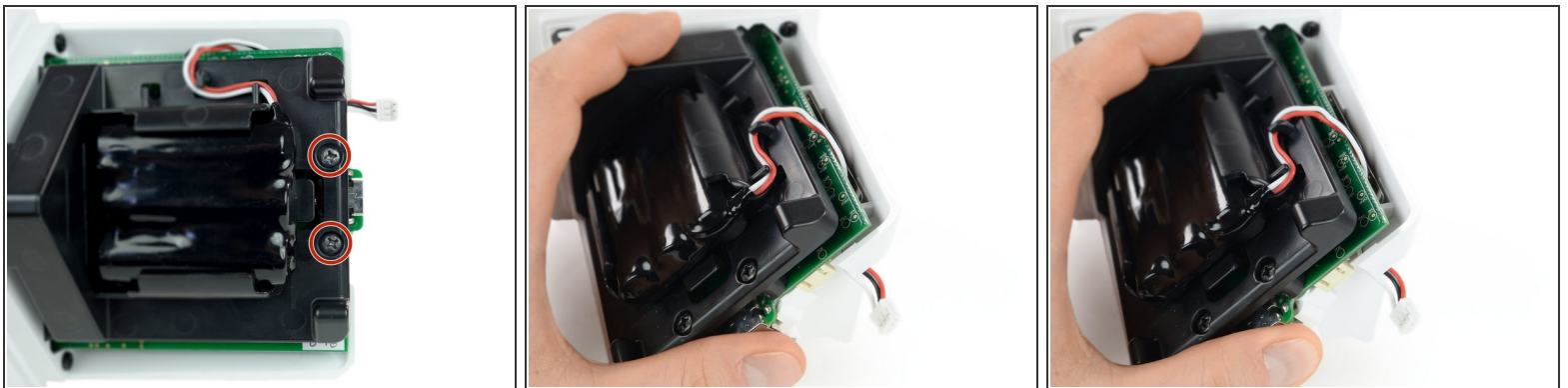
- Lift the inner part out of the foam housing.

Step 5 — Battery



- Unplug the battery connector from the main board by gently pulling the cables.
- ☑ When reconnecting the new battery make sure to [properly orient](#) the connector.

Step 6



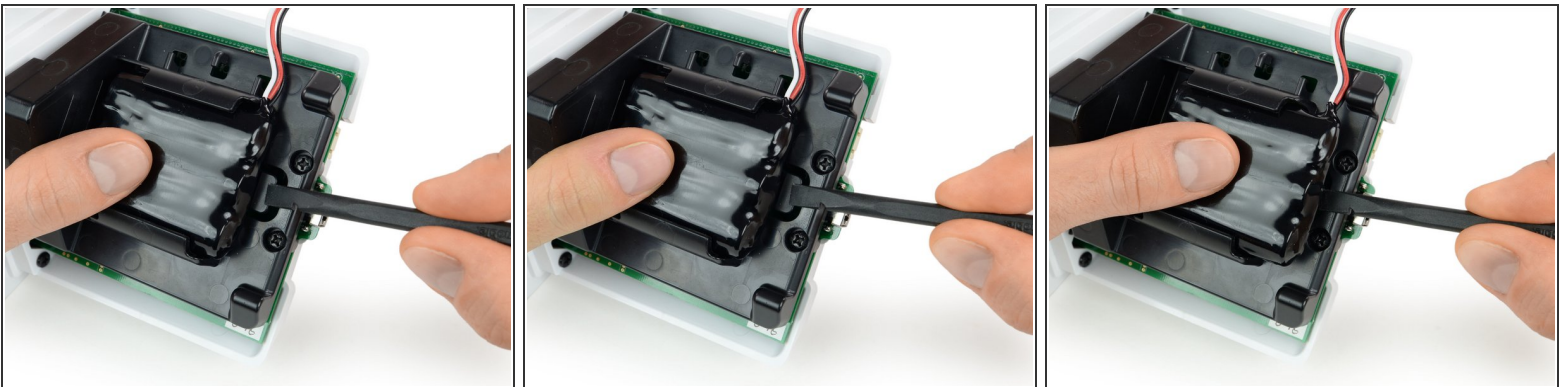
- Loosen the two screws next to the battery. Don't remove them.
- Lift the main board a bit to widen the gap between the white plastic housing.
- ⓘ This gap will help you in the next step.

Step 7



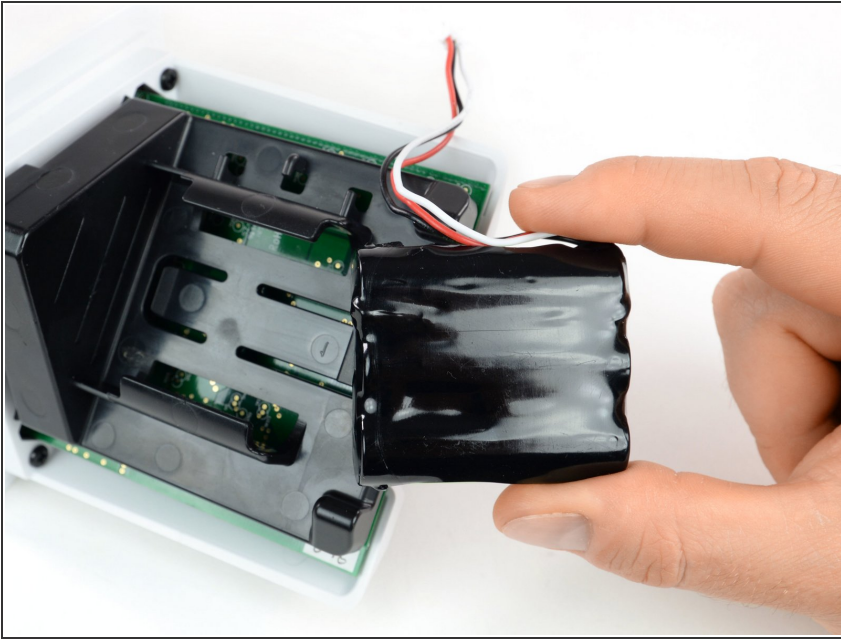
- Feed the battery cable from behind the main board and out of its plastic guide hooks.
- ☑ When installing the new battery you don't have to feed the cable behind the main board. Depending on their length aligning them along the black plastic will suffice.

Step 8



- Use a spudger or finger to push down the plastic latch that keeps the battery in place.
- Push the battery out of its frame.

Step 9



- Remove the battery.

To reassemble your device, follow these instructions in reverse order.

Take your e-waste to an [R2 or e-Stewards certified recycler](#).