



Toshiba CB35-3350 Chromebook 2 Battery Replacement

Use this guide to replace the battery in the Toshiba CB35-3350 Chromebook 2.

Written By: Kojo Appiagyei



INTRODUCTION

This guide will not take long, however it is important to replace the battery if the laptop does not turn on.



TOOLS:

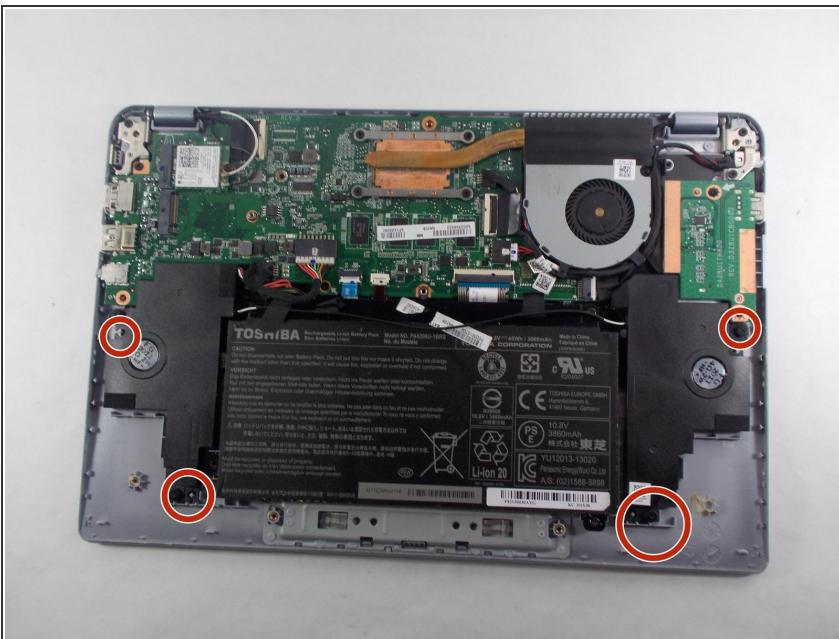
- [Phillips #0 Screwdriver](#) (1)
 - [iFixit Opening Tools](#) (1)
-

Step 1 — Battery



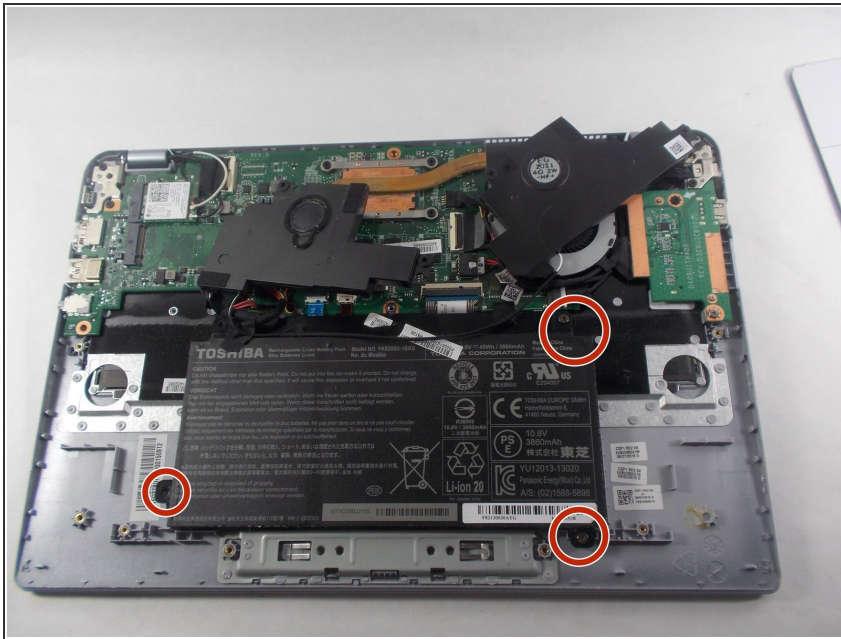
- Remove the Phillips #0 screws from the back of the laptop.
- Use your hands and an iFixit opening tool to remove the back of the laptop.

Step 2



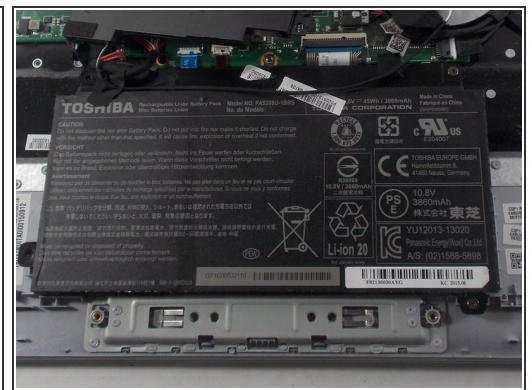
- Remove the four Phillips #0 screws from the speakers.
- Move the speakers out of the way.

Step 3



- Remove the three Phillips #0 screws from the battery.

Step 4



- Unplug the wires connecting the battery to the motherboard.
- Remove the battery from the laptop.

To reassemble your device, follow these instructions in reverse order.