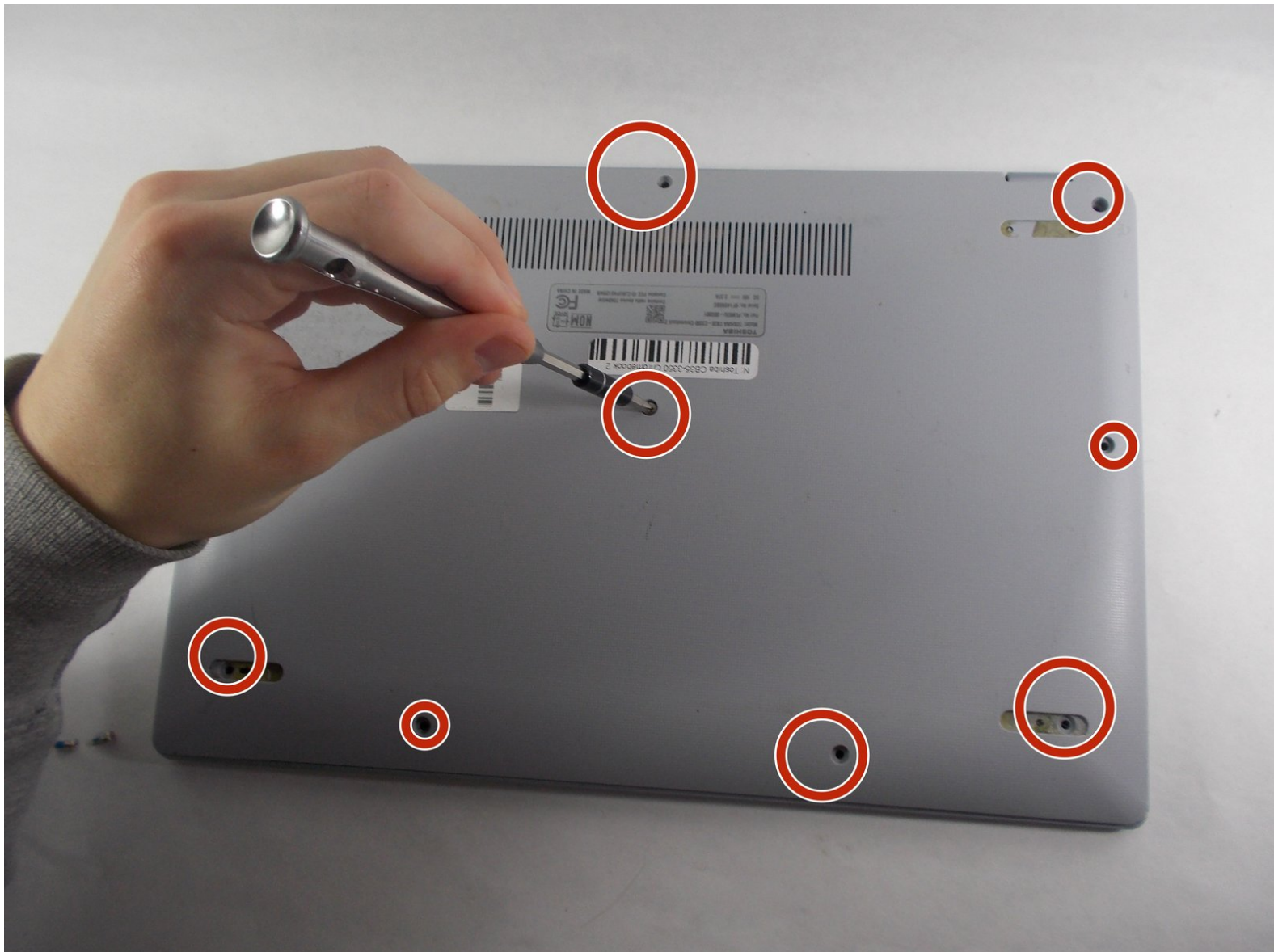




Toshiba CB35-3350 Chromebook 2 Bluetooth Chip Replacement

Use this guide to replace your Bluetooth Chip in your Toshiba CB35-3350 Chromebook 2.

Written By: Kojo Appiagyei

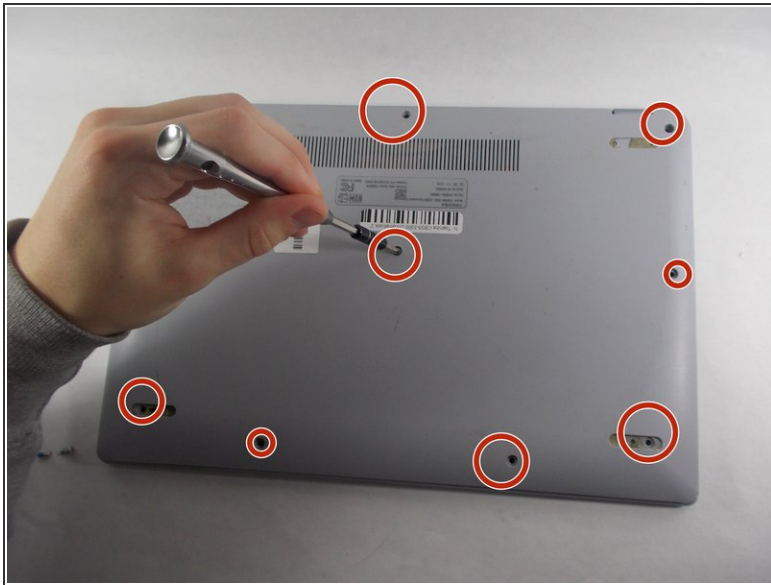




TOOLS:

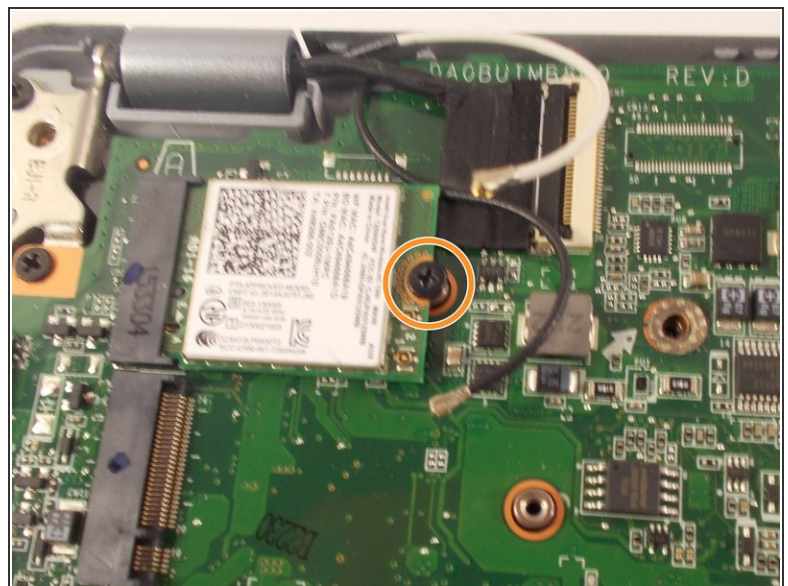
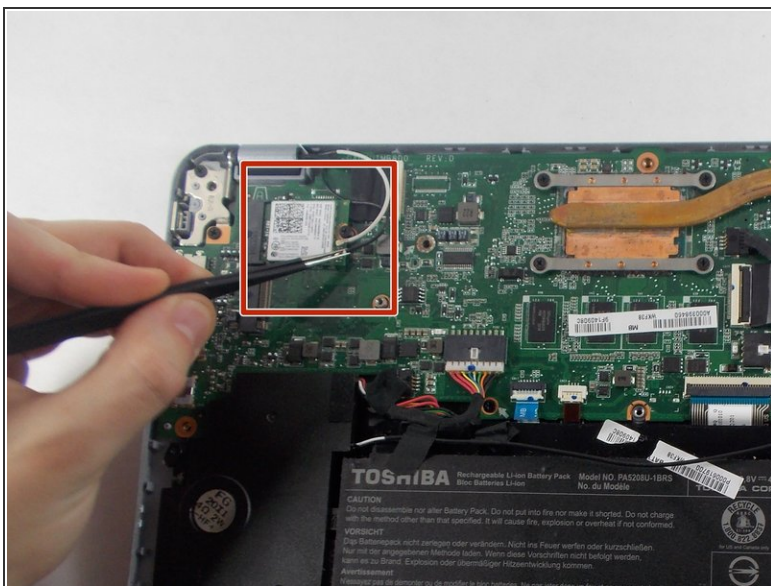
- [Phillips #0 Screwdriver](#) (1)
- [iFixit Opening Tools](#) (1)

Step 1 — Bluetooth Chip



- Remove the Phillips #0 screws from the back of the laptop.
- Use your hands and an iFixit opening tool to remove the back of the laptop.

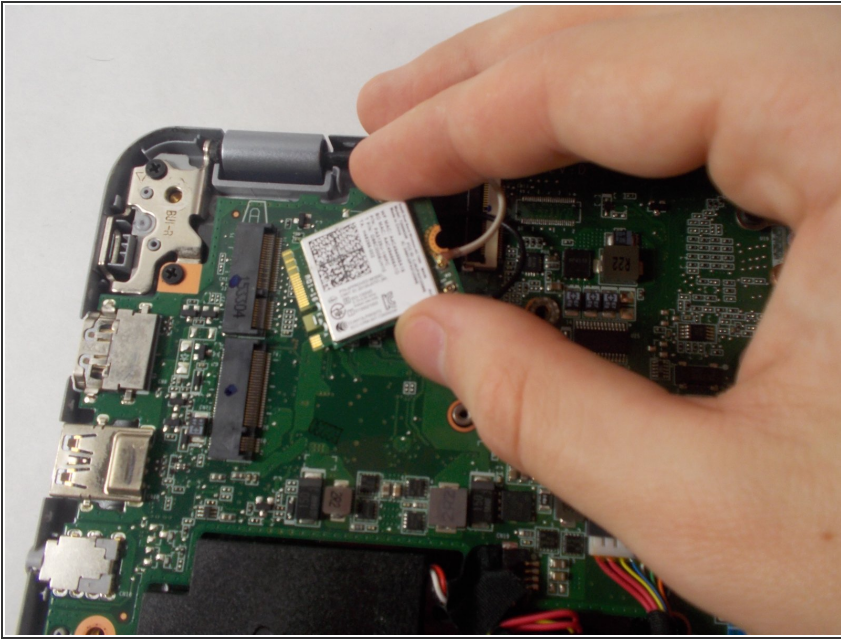
Step 2



- Use a pair of tweezers to remove the wires attached to the Bluetooth chip.
- Remove the screw holding the chip in place.

This document was generated on 2020-01-18 02:13:03 PM (MST).

Step 3



- Slide the chip out of its port.

To reassemble your device, follow these instructions in reverse order.