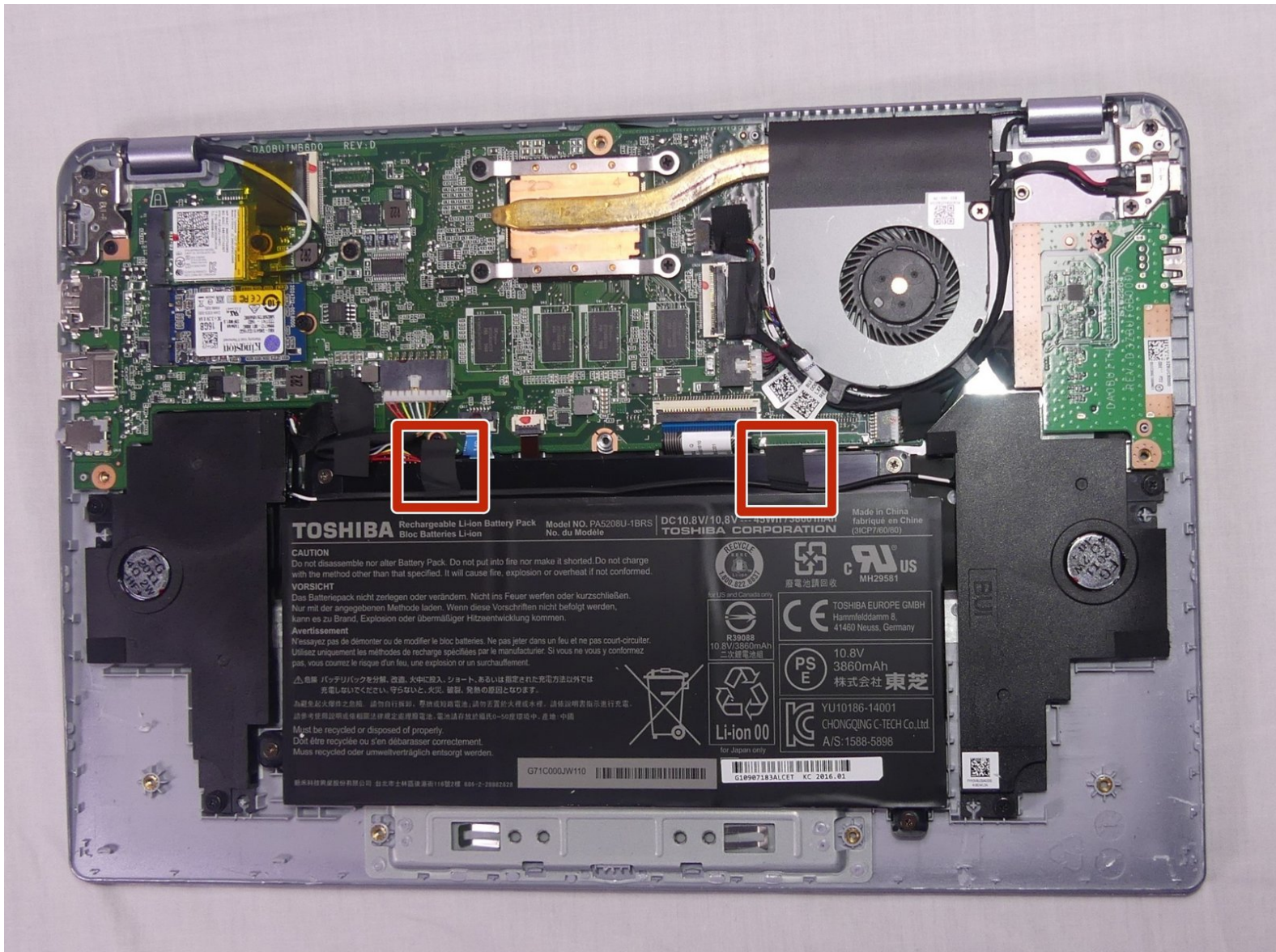




Toshiba CB35-C3300 Chromebook 2 Battery Replacement

How to remove and replace the battery of Toshiba CB35-C3300 Chromebook 2

Written By: varun kapadia



INTRODUCTION

This guide will not take long accomplish however it is crucial to remove the battery before removing any other part from inside the machine to help ensure no injury from electric shock.



TOOLS:

- [iFixit Opening Tools](#) (1)
- [Phillips #1 Screwdriver](#) (1)
- [Spudger](#) (1)



PARTS:

- [Toshiba PA5208U-1BRS Replacement Laptop Battery](#) (1)

Step 1 — Back Cover



- Remove the 2 rubber foot pads from the bottom (opposite the hinge) with the small Plastic Opening tool.

Step 2



- Remove the 10 7.1 mm screws using Phillips #1 screwdriver.

Step 3



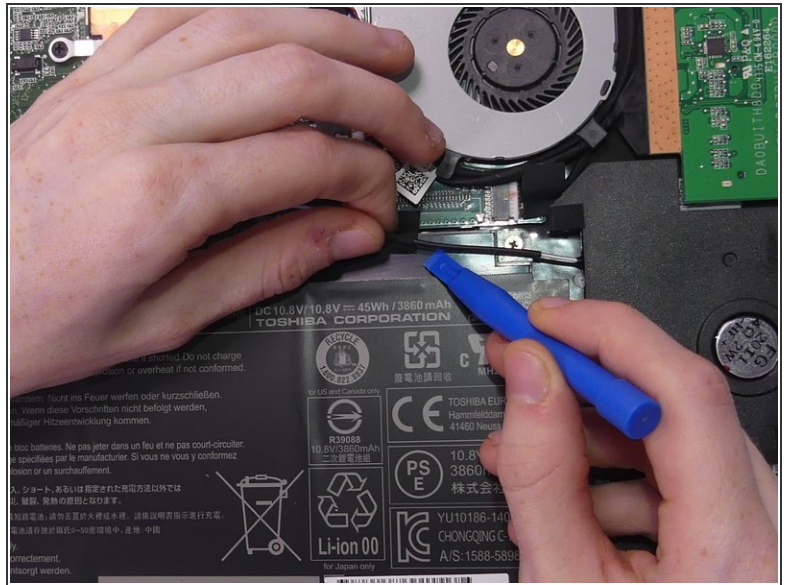
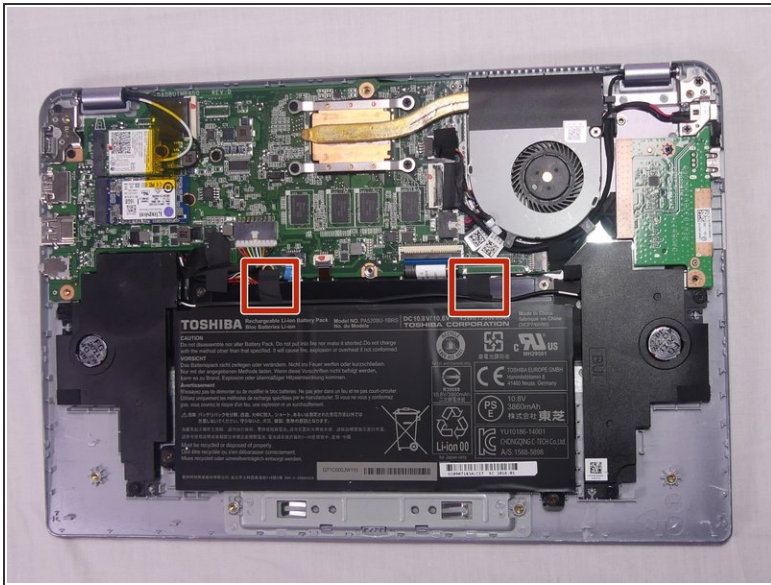
- Loosen the back cover by using a plastic opening tool all the way around the device.
- ⓘ There are areas all along the sides of the device that help aid in this.
- ⚠ Be careful when prying, and go slow. The silver plastic frame around the dull gray plastic bottom is fragile and easily dented from prying pressure.

Step 4



- Remove the back cover by gently lifting up on one side of the device.
- ⓘ The easiest side to lift up on is the one with the removed rubber foot pads.

Step 5 — Battery



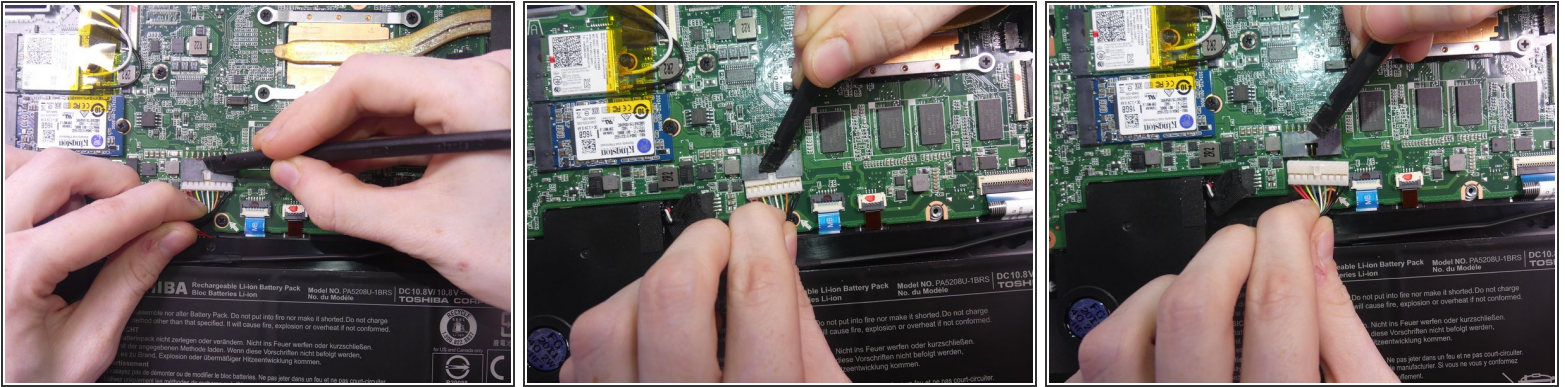
- Remove the tape holding the speaker wire to the battery on both sides using a small opening tool.

Step 6



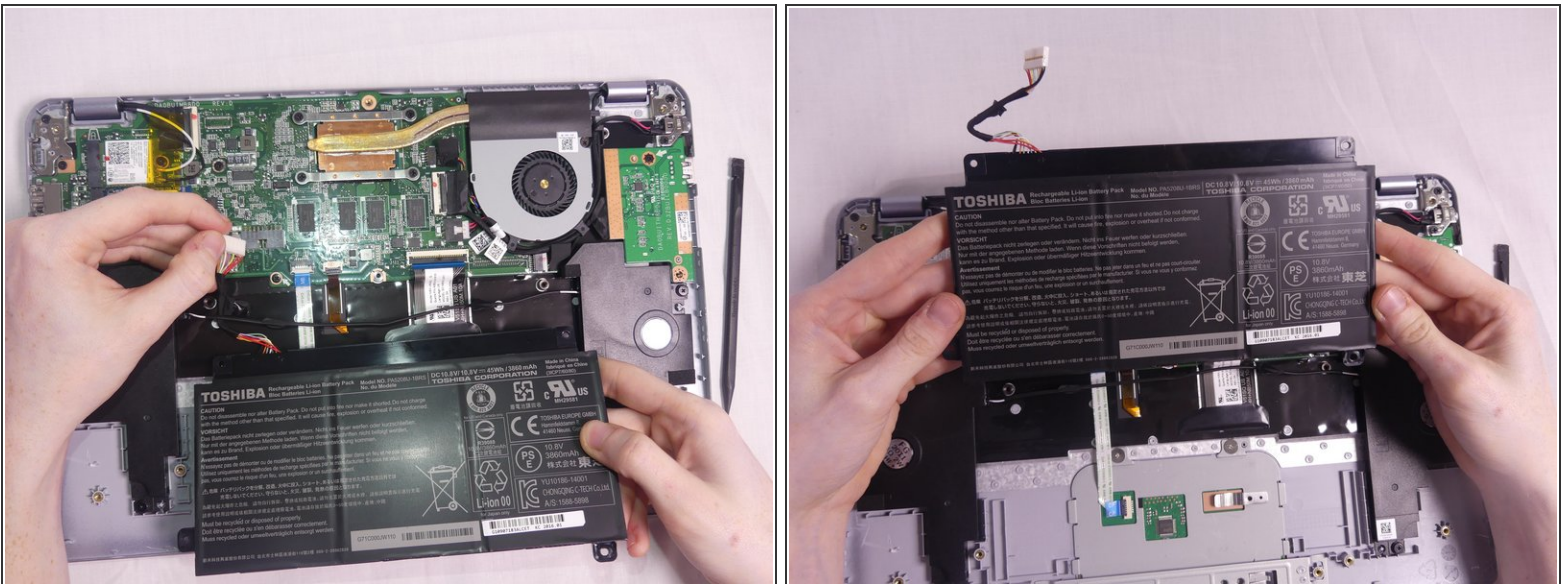
- Remove the 4 Phillips 3.2 mm screws holding the battery in place, with the Phillips #1 screwdriver.

Step 7



- To disconnect the wire from the motherboard, gently press down with the flat end of Spudger and pull on the wire.
- ① Gently shaking the wire from left to right helps with the wire removal

Step 8



- Remove the battery by gently pulling on the bottom corners.
- ⚠ Be careful to move the battery's wire under the speaker's wire.

To reassemble your device, follow these instructions in reverse order.