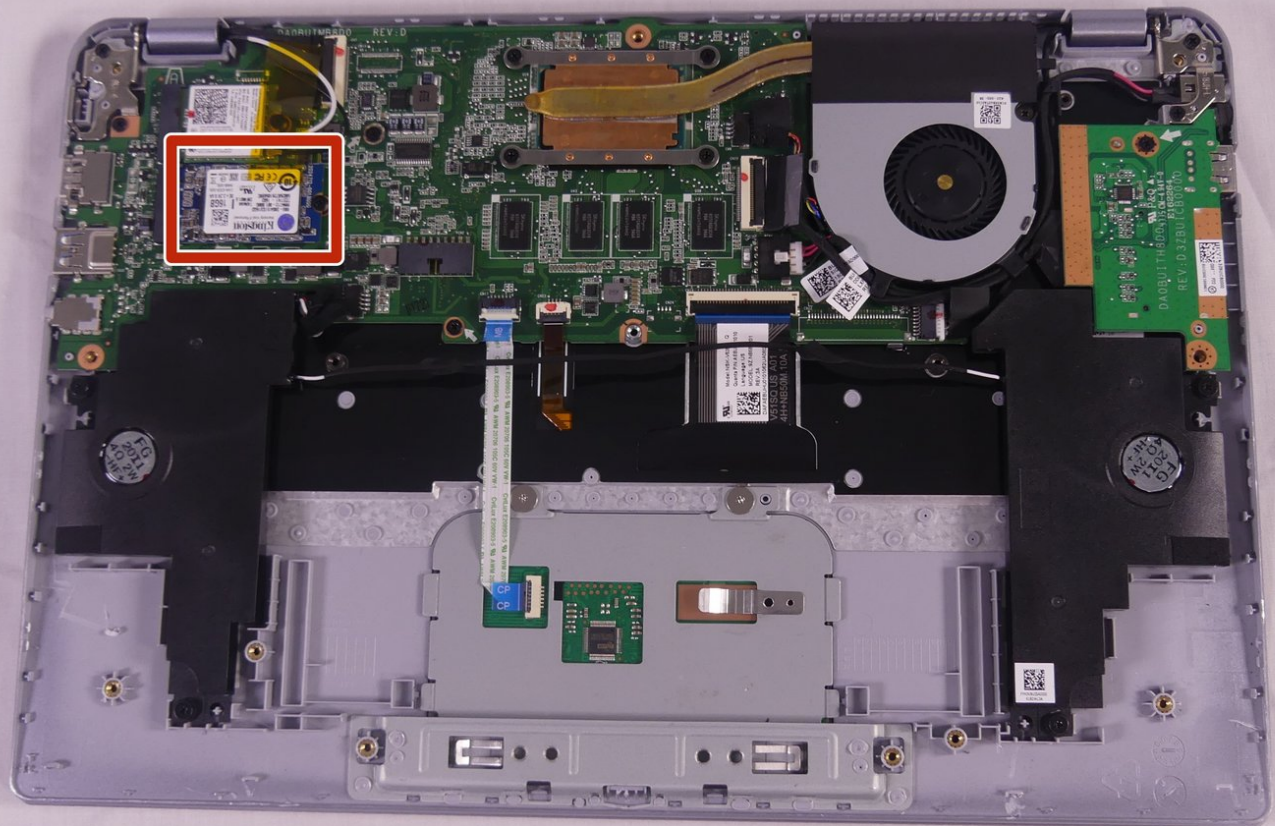




Toshiba CB35-C3300 Chromebook 2 SSD Replacement

Guide to replace your Toshiba CB35-C3300 Chromebook 2 solid state drive.

Written By: Jillian Thomas



INTRODUCTION

This guide is really simple. It only involves unscrewing one screw!



TOOLS:

- [Phillips #1 Screwdriver](#) (1)
- [iFixit Opening Tools](#) (1)
- [Spudger](#) (1)



PARTS:

- [Phillips Head Screwdriver: Size PH1](#) (1)

Step 1 — Back Cover



- Remove the 2 rubber foot pads from the bottom (opposite the hinge) with the small Plastic Opening tool.

Step 2



- Remove the 10 7.1 mm screws using Phillips #1 screwdriver.

Step 3



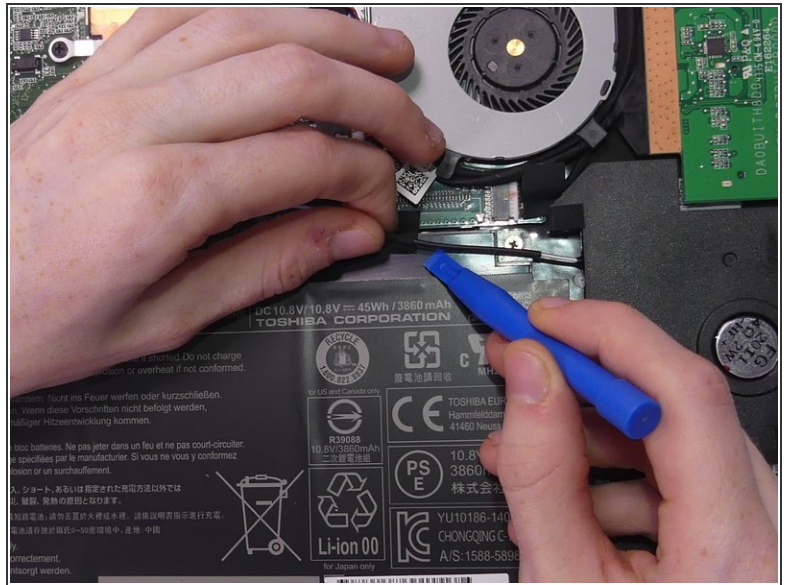
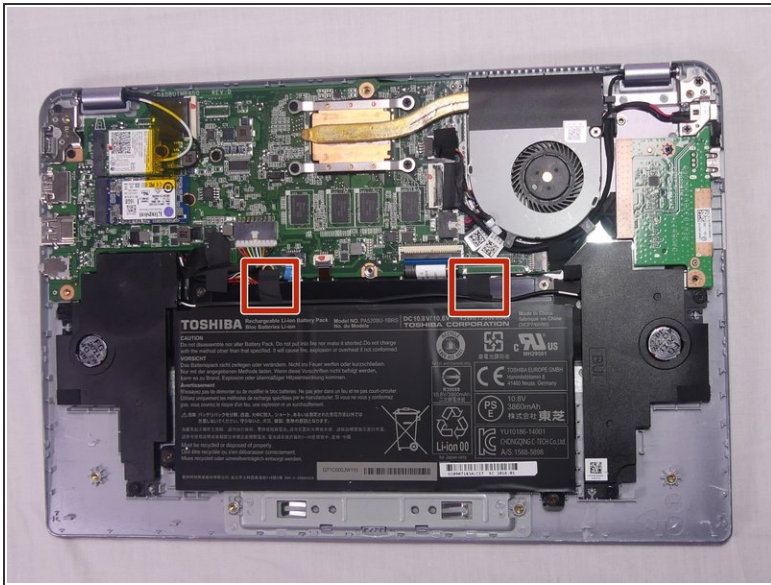
- Loosen the back cover by using a plastic opening tool all the way around the device.
- ⓘ There are areas all along the sides of the device that help aid in this.
- ⚠ Be careful when prying, and go slow. The silver plastic frame around the dull gray plastic bottom is fragile and easily dented from prying pressure.

Step 4



- Remove the back cover by gently lifting up on one side of the device.
- ⓘ The easiest side to lift up on is the one with the removed rubber foot pads.

Step 5 — Battery



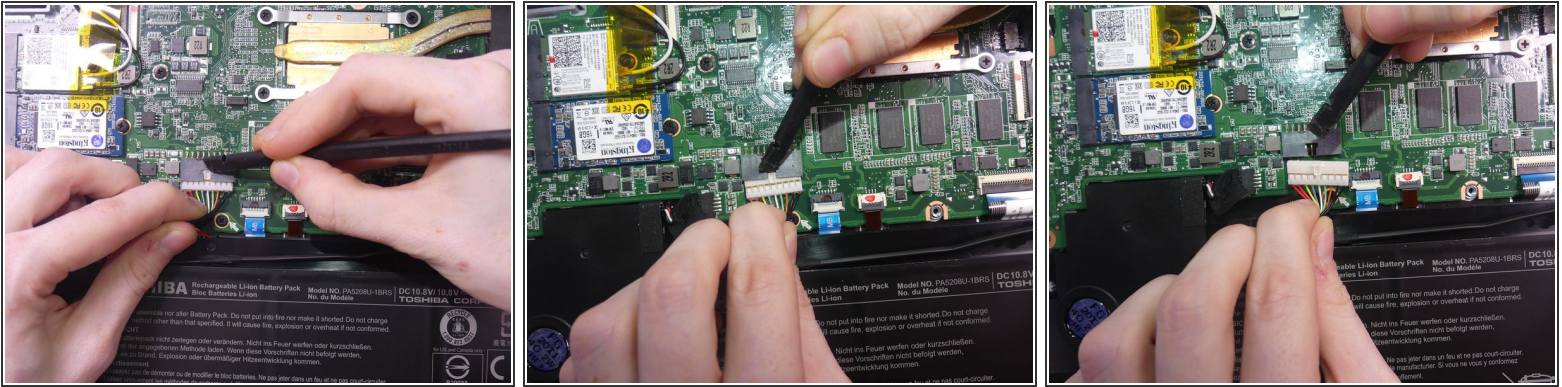
- Remove the tape holding the speaker wire to the battery on both sides using a small opening tool.

Step 6



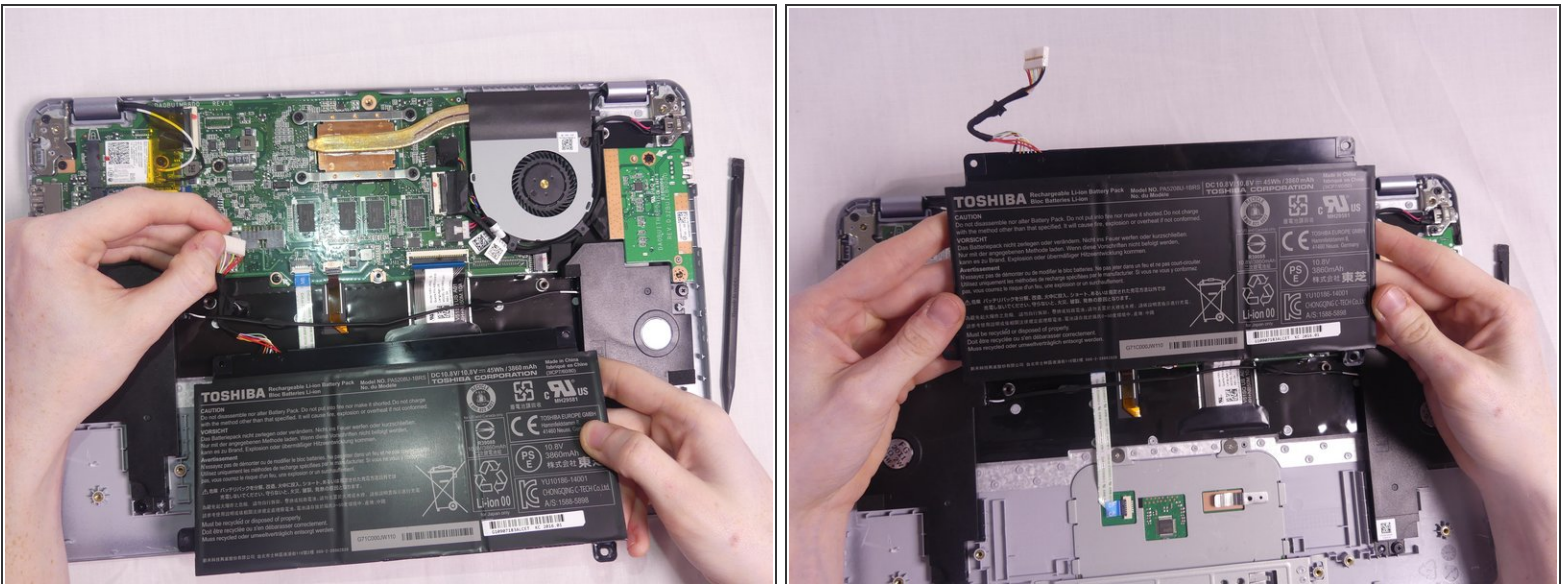
- Remove the 4 Phillips 3.2 mm screws holding the battery in place, with the Phillips #1 screwdriver.

Step 7



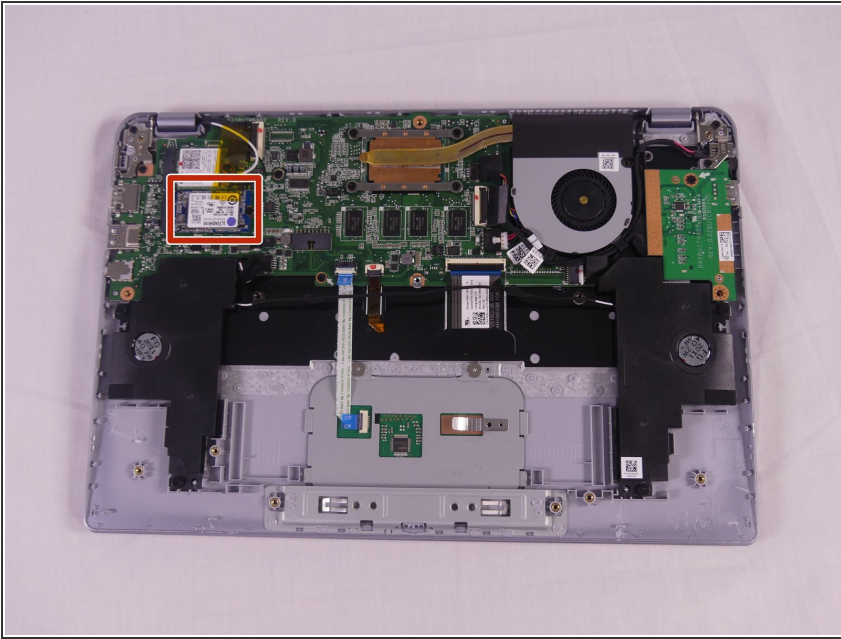
- To disconnect the wire from the motherboard, gently press down with the flat end of Spudger and pull on the wire.
- ① Gently shaking the wire from left to right helps with the wire removal

Step 8



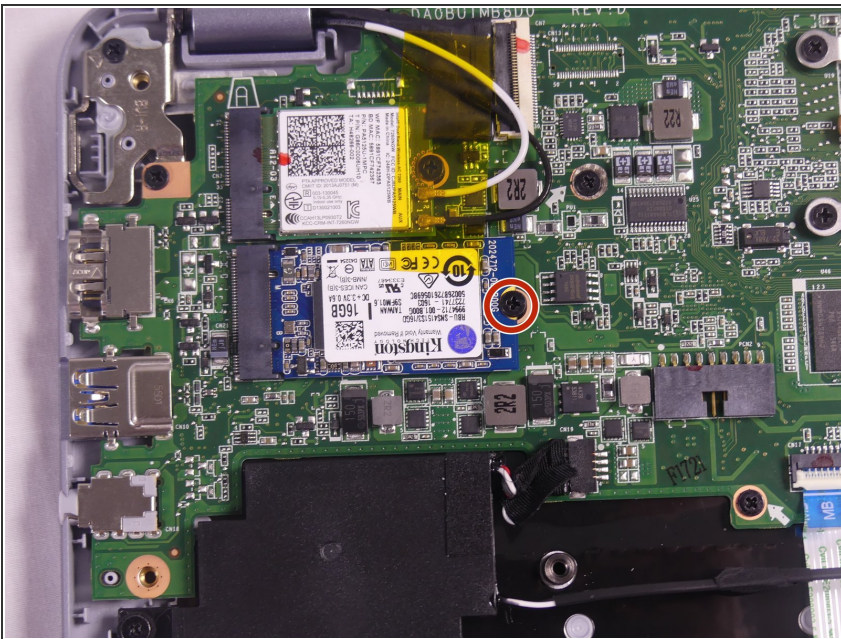
- Remove the battery by gently pulling on the bottom corners.
- ⚠ Be careful to move the battery's wire under the speaker's wire.

Step 9 — SSD



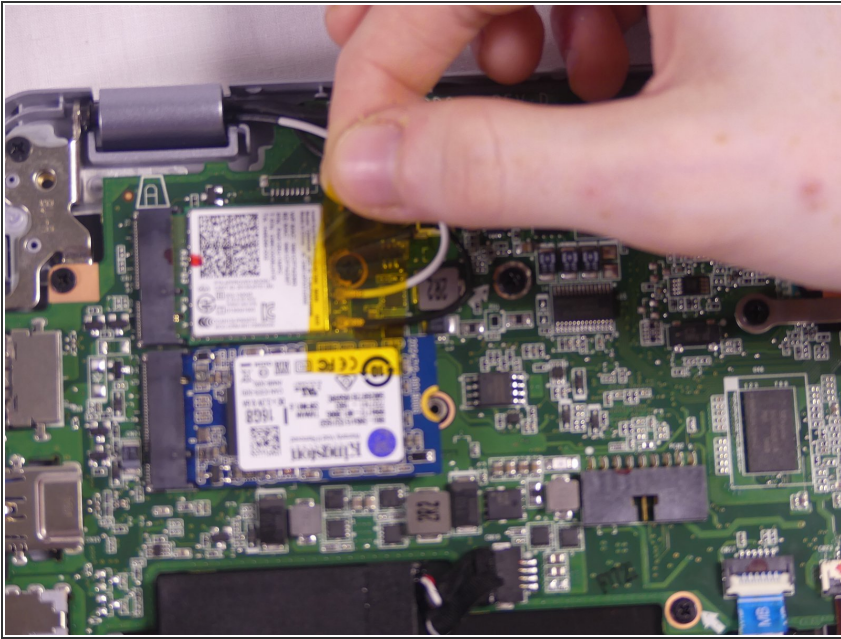
- Location of the SSD card

Step 10



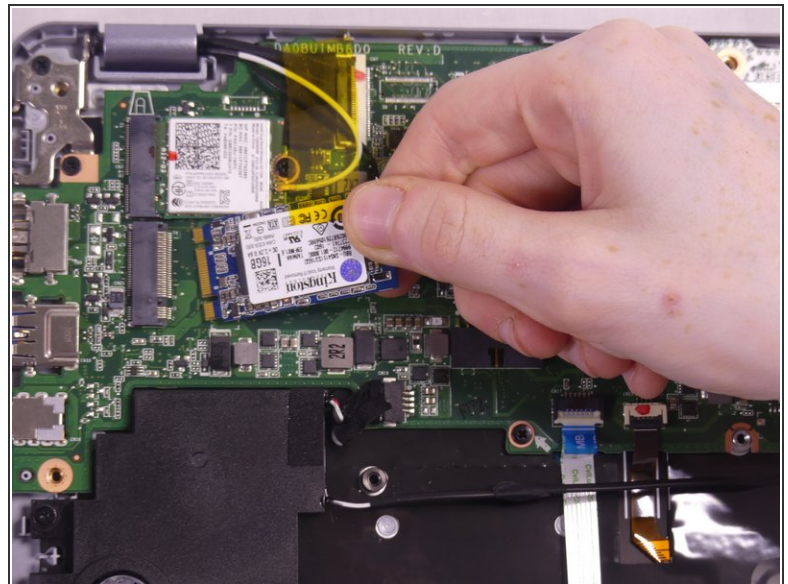
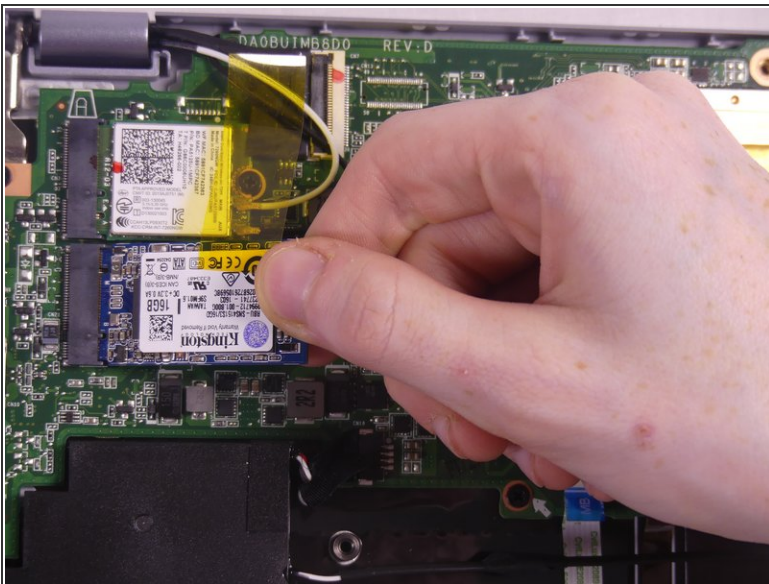
- Remove the Phillips 3.6 mm screw using a Phillips #1 screwdriver.

Step 11



- Remove the yellow tape by slowly peeling it away at the bottom on the SSD.

Step 12



- Remove the SSD card from the motherboard by gently pulling up on the side where the screw originally was and out in the same direction.

To reassemble your device, follow these instructions in reverse order.

This document was generated on 2019-12-31 06:19:14 PM (MST).

