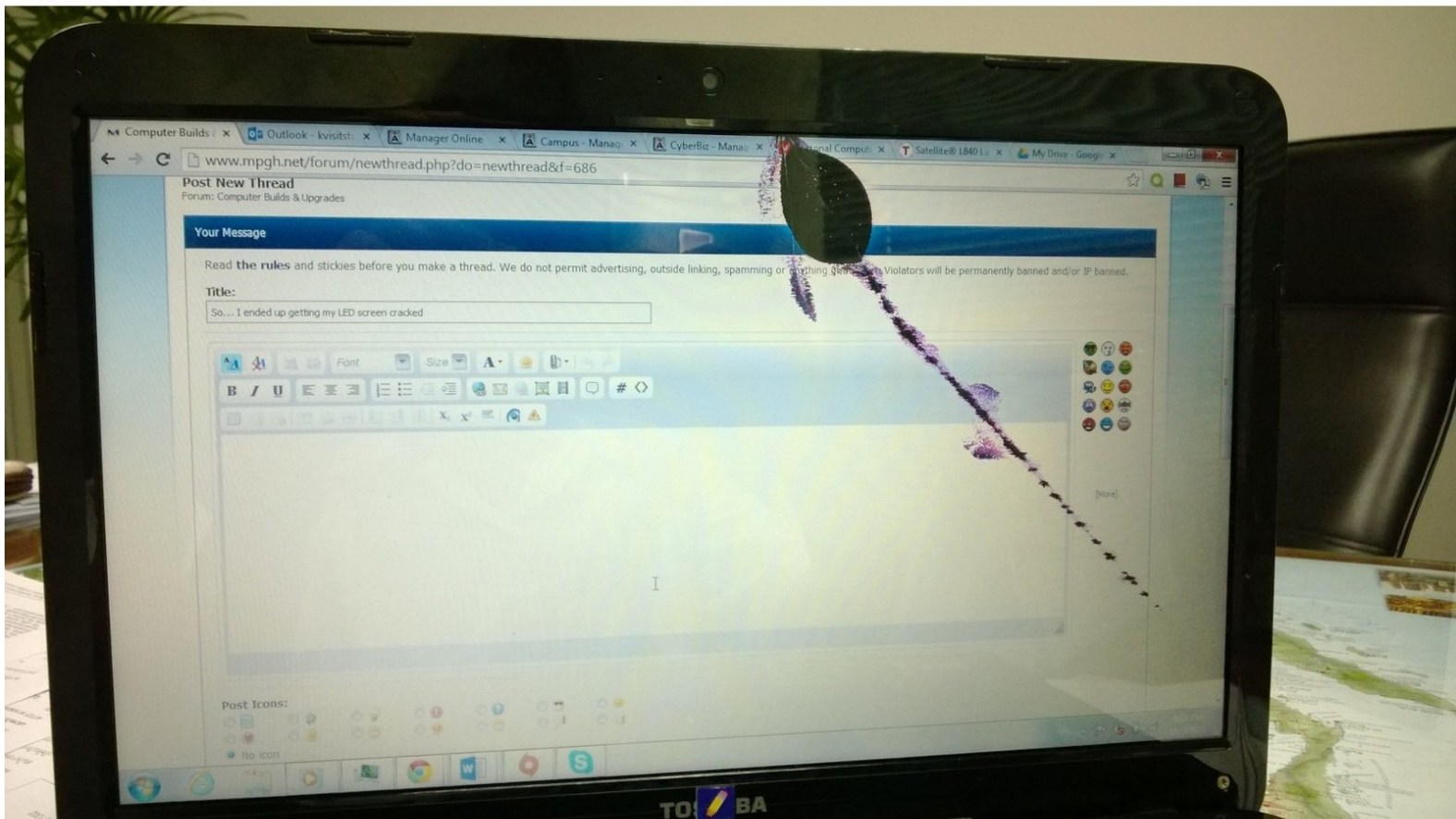




Toshiba Chromebook 2 Display Replacement

If one day your TOSHIBA display is not working properly, there are specific guide to troubleshoot the display, and try to figure out what the problem is.

Written By: Marwan Aljohani



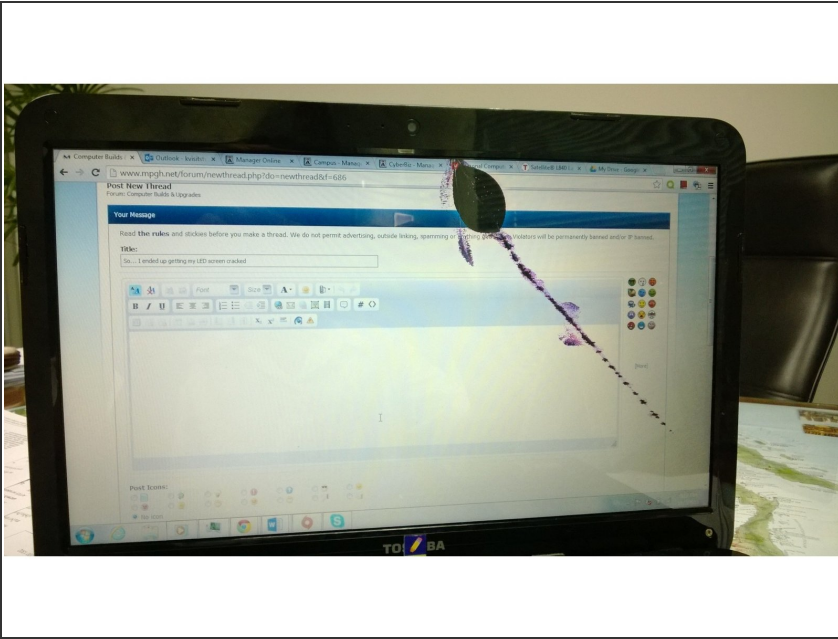
INTRODUCTION

When trying to troubleshoot the monitor, check for the most obvious physical problems. Such as, a crack on the outer case of the monitor, shattered LED screen, or low light emission from the LED.

TOOLS:

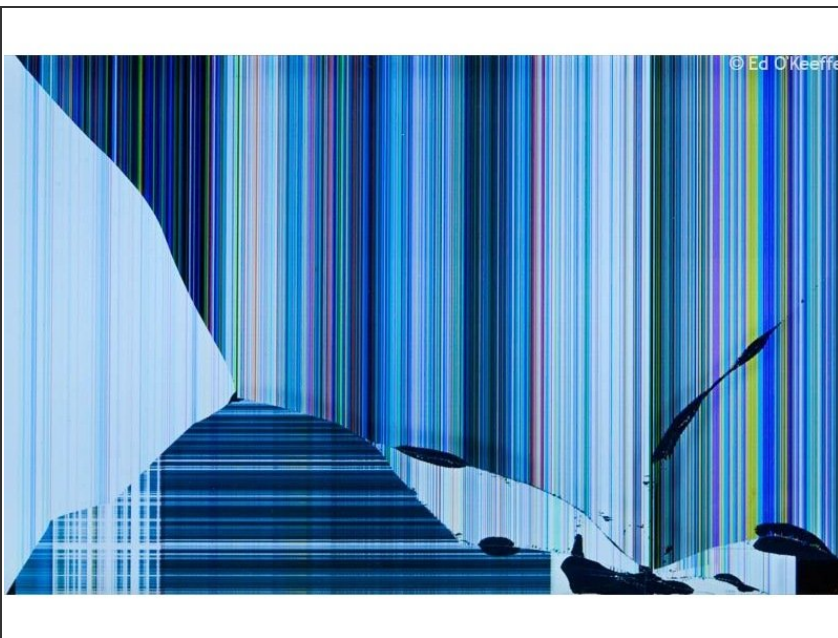
- [Phillips #0 Screwdriver](#) (1)
-

Step 1 — Display



- If there is a crack on the outer case of the display so that the display is working properly, but there is distractions on the screen from the shattered case. In that case, the outer case can be easily replaced. It is just a matter of pulling the plastic case that's stuck against the LED screen, and push the new case back in its place.

Step 2



- • Shattered LED screen is when you push your finger against the screen, you see some kind of a rainbow effect around your finger. If the LED screen is shattered, it is unusable, and needs to be replaced with a new LED screen.

Step 3



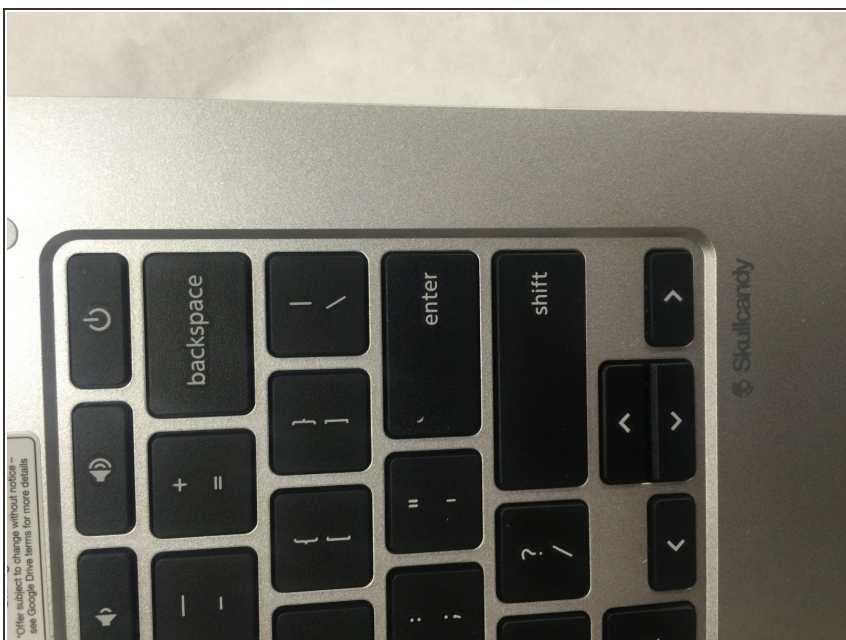
- If the light coming out of the display is not bright enough, check the picture settings manually, and try to adjust sharpness, contrast, and brightness.

Step 4



- If setting the picture manually did not change the brightness, it simply means that the LED in the back of the LED screen is broke. That means a new LED screen is required.

Step 5



- To replace your display screen you need to shut down the computer first.

Step 6



- In order to get to the screen assembly, you need to remove the screen bezel (plastic frame around the screen)

Step 7



- To remove the bezel, you need to unscrew two screws in the bottom of the front screen hiding behind screw covers.

Step 8



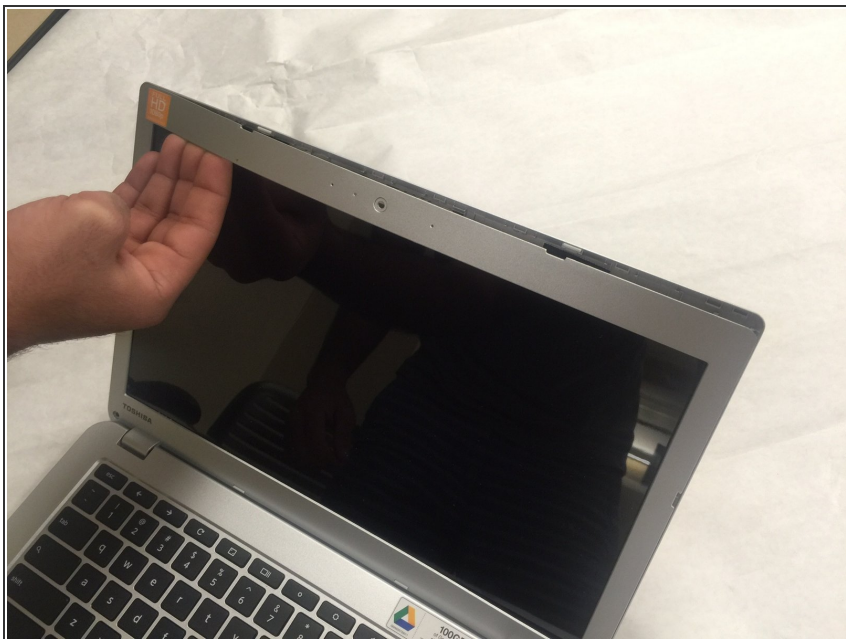
- First, remove the screw covers with a small hobby knife. Use a PH #0 (Philips screwdriver) to unscrew the couple of screws in the front screen bezel.

Step 9



- Once you are done with unscrewing, snap off the screen bezel. To do that, you need to reach your fingernails of both hands on the inside of the screen bezel in the left or right side of the screen, and gently lift up and out.

Step 10



- You will hear a snapping sound. Work your way around the screen bezel.

Step 11



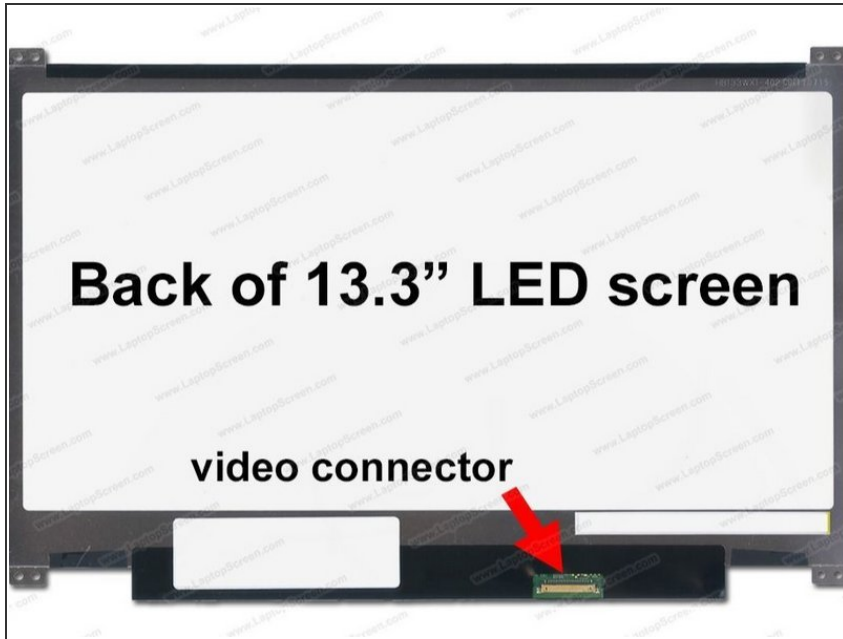
- Once you take out the screen bezel, four screws mount the LED screen. Unscrew them, tilt the screen forward, and lay it on the keyboard exposing the backside of the screen.

Step 12



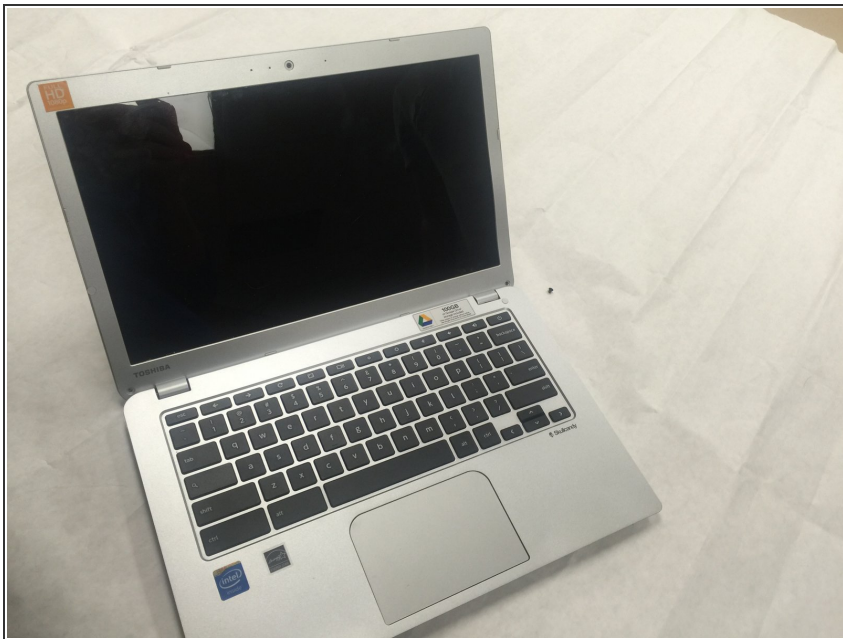
- Once you do that, you will see the screen has only one connector. Use the hobby knife to lift up the adhesive tape (Be careful not to cut it) Pull the adhesive tape back, and grab the back of the connector with both your fingers, and gently pull the connector back out. Now the screen is loose.

Step 13



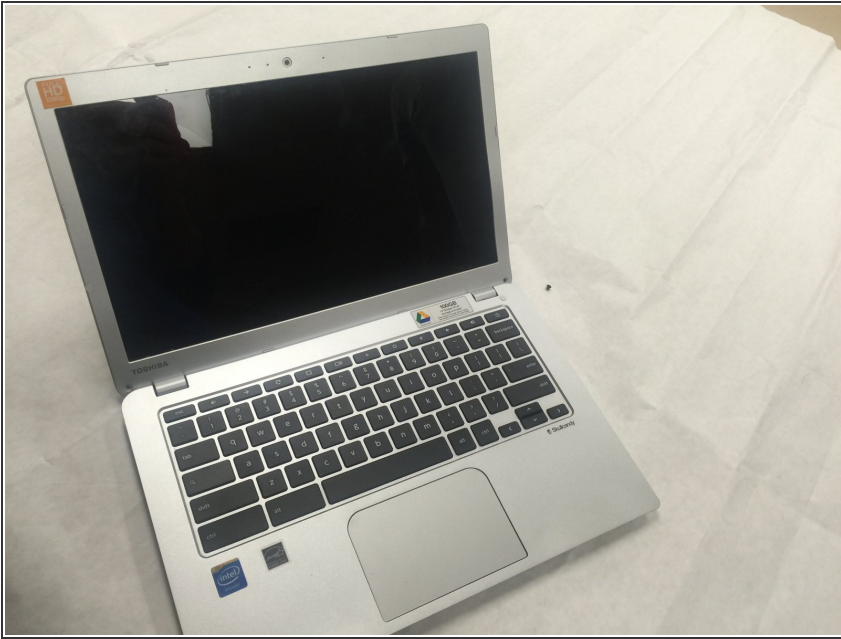
- Put the new 13.3' LED screen in its place and start by connecting the screen connector. Put the screen where it is supposed to be mounted at, and screw back the four screws that hold the screen.

Step 14



- Now it's a matter of putting the screen bezel back by pushing it in to stay around the screen.

Step 15



- Finally, screw back the two screws on the bottom of the screen bezel, and cover them with the screws covers.

To reassemble your device, follow these instructions in reverse order.