



# Toshiba Chromebook 2 LCD Screen Replacement

How to replace the LCD screen in a Toshiba Chromebook 2 laptop computer. (CB30-B-104)

Written By: Paul Freeman-Powell



## INTRODUCTION

This video shows you how to replace the LCD screen in a Toshiba Chromebook 2 laptop computer.

[video: <https://www.youtube.com/watch?v=uMNIHeP3vu4>]



### TOOLS:

- [Phillips #0 Screwdriver](#) (1)
- [Spudger](#) (1)
- [Craft knife](#) (1)



### PARTS:

- [Screen Replacement](#) (1)

## Step 1 — LCD Screen



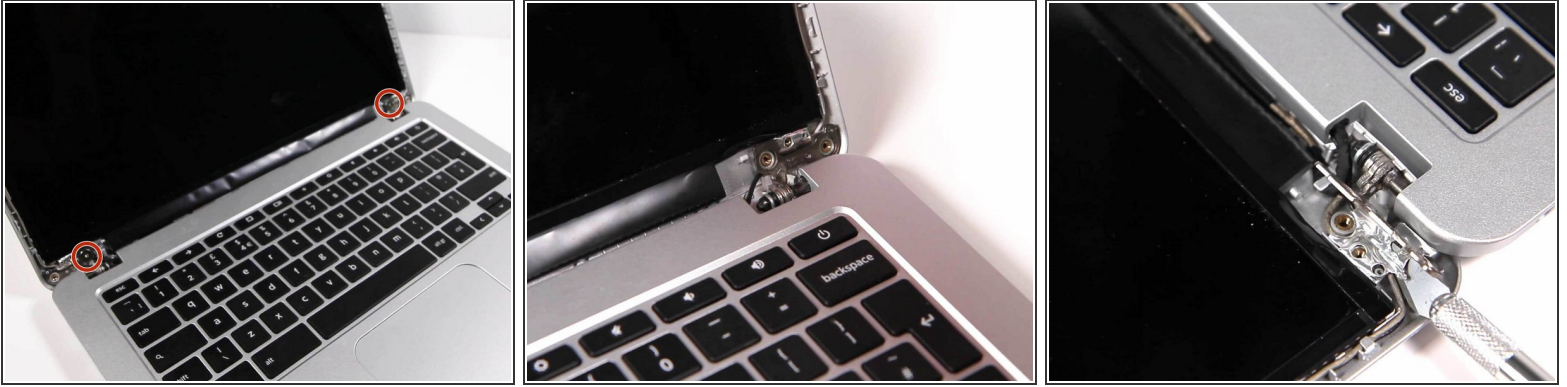
- Remove the two screws which are located at the bottom corners of the screen.
- The screws are underneath little covers which can be removed with a craft knife.

## Step 2



- Carefully slide your plastic spudger tool into the crack between the outer edge of the bezel and the back of the display assembly.
- Slide it all the way along all edges, carefully unclipping the bezel from the back assembly.
- Be very careful and take your time - it's easy to snap the bezel or to break the clips, making reassembly less secure.
- Once everything is released you should be able to lift up the bezel and it freely come away.

## Step 3



- Remove the two screws holding the back assembly to the hinge mechanism.
- Be careful as you're unscrewing these! Support the display assembly with your other hand.
- Lay the loose display assembly down and then fold the metal foil tabs up and out of the way.
- Some models' screens are held down by adhesive; if this is the case with yours, carefully pry the screen away from the back being careful not to damage any cables.
- If your display is screwed down, there will be extra screws to remove and it should then come away freely.

## Step 4



- Fold the loose screen down onto the laptop's keyboard, as if you were closing the laptop, with the rear of the display assembly still open.
- Carefully remove the connecting ribbon cable as shown in the picture.
- You may need to remove the sticky adhesive tape which holds the connector in place before you can remove it.
- When reassembling, replace this with some fresh sticky table to help prevent it coming loose over time.

To reassemble your device, follow these instructions in reverse order.