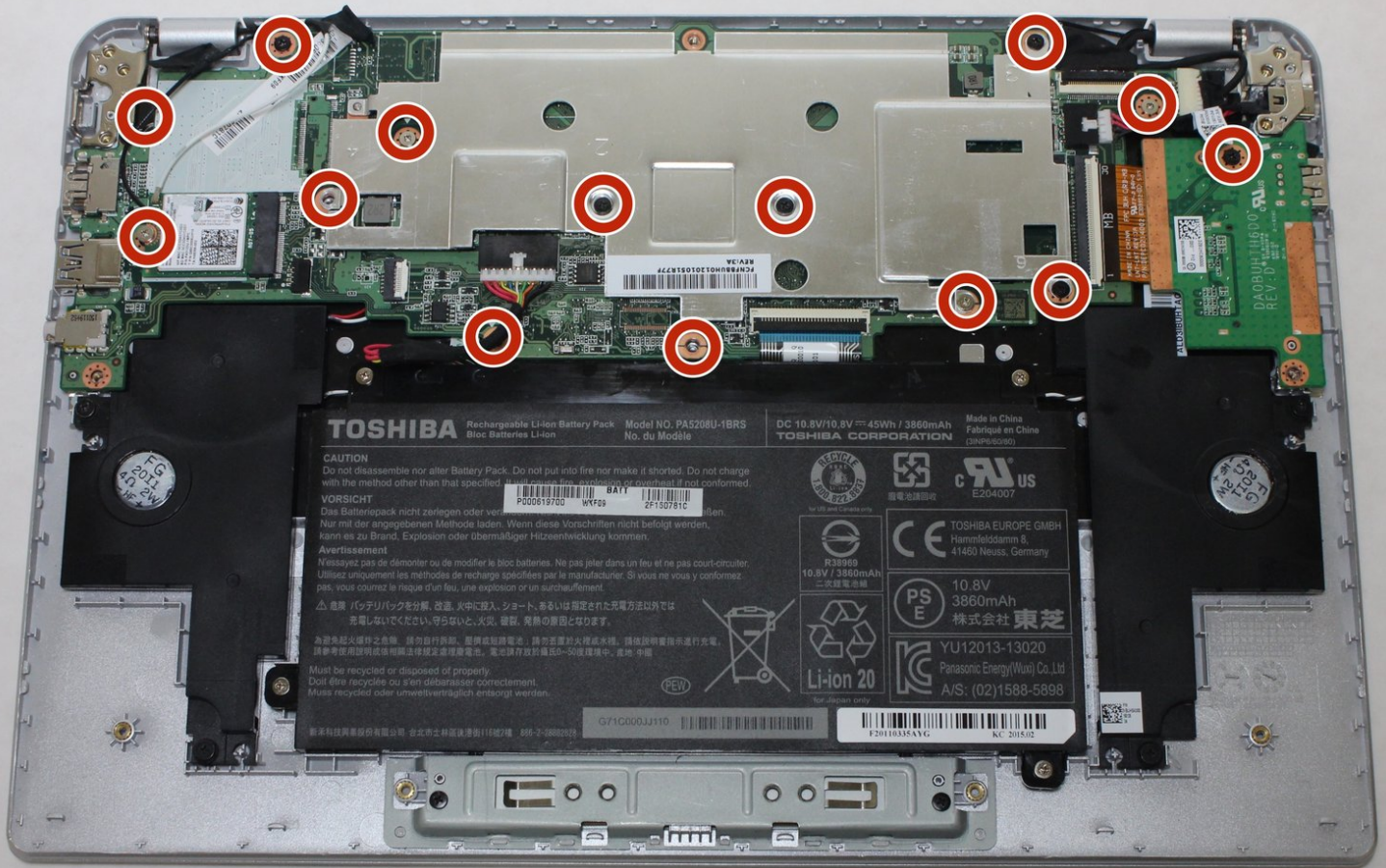




# Toshiba Chromebook 2 Motherboard Replacement

This guide will give step by step instructions on how to replace the motherboard of a Toshiba Chromebook 2

Written By: Sam Nishi



---

## INTRODUCTION

Motherboards can be damaged by significant trauma or a power surge, resulting in a computer that will not turn on or respond. Motherboards can also be upgraded to enhance the performance of your computer. Replacing a motherboard is often seen as a last resort as all components of the computer attach to the motherboard, and therefore must be disconnected to replace. iFixit provides a helpful page for [Troubleshooting a Computer Motherboard](#).



### TOOLS:

- [Phillips #0 Screwdriver](#) (1)
  - [Spudger](#) (1)
-

## Step 1 — Back Cover



- Remove all external devices from the Toshiba Chromebook 2.

## Step 2



- Close the Toshiba Chromebook 2 and turn it over so that the bottom of the laptop is facing upwards toward you with the lettering on the bottom facing right side up.

## Step 3



- Remove the 8 visible Phillips 8.25 mm screws using the Phillips #0 screwdriver.



## Step 4



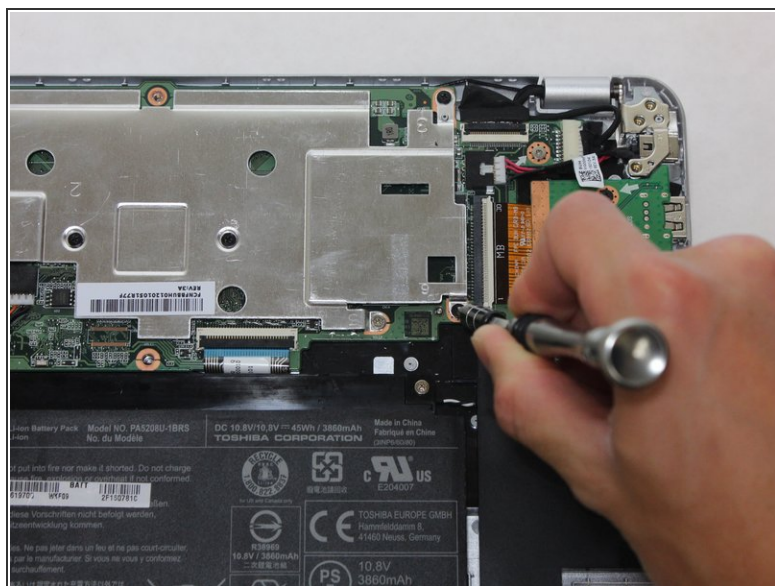
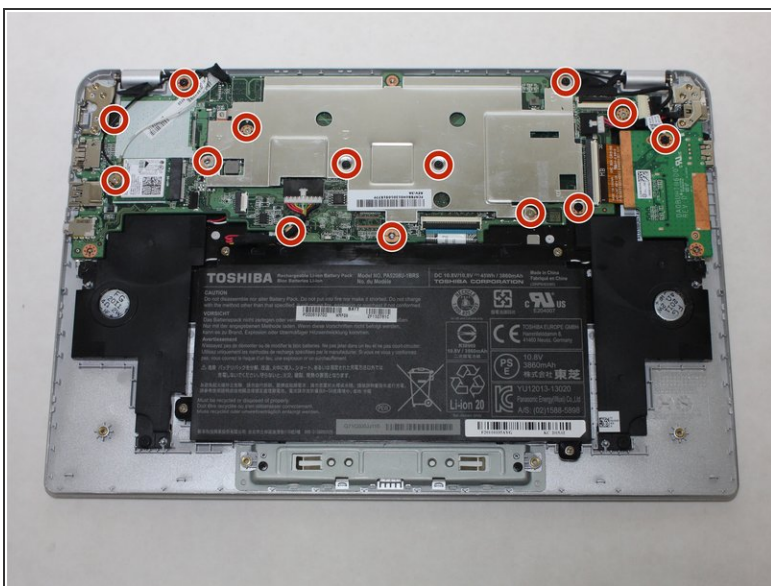
- Remove 2 hidden Phillips 8.25 mm screws located underneath the rubber grips at the back (opposite the hinges) with the Phillips #0 screwdriver.
- ⓘ The rubber grips are glued in place, so you'll need to peel them up with a spudger or other pry tool.

## Step 5



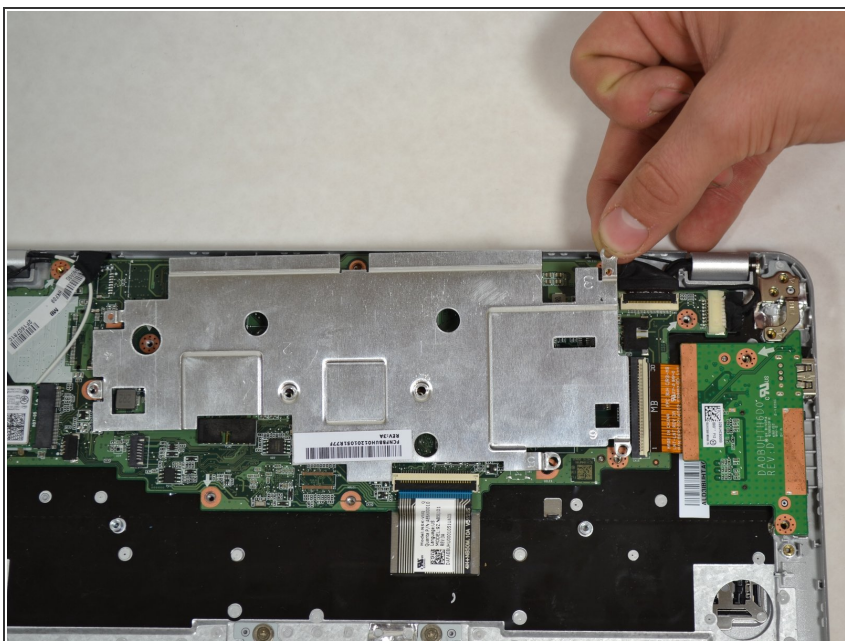
- Remove the back panel by pulling up on 2 adjacent corners.

## Step 6 — Motherboard



- Remove the 14 Phillips 2.34mm screws using the Phillips #0 screwdriver.

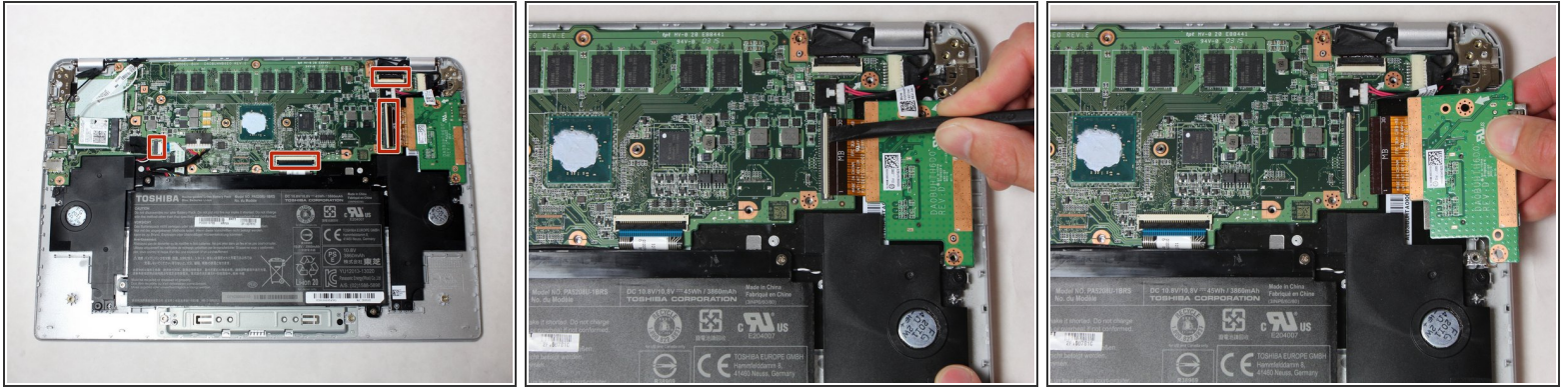
## Step 7



- Remove the metal plate covering the motherboard by lifting it vertically.

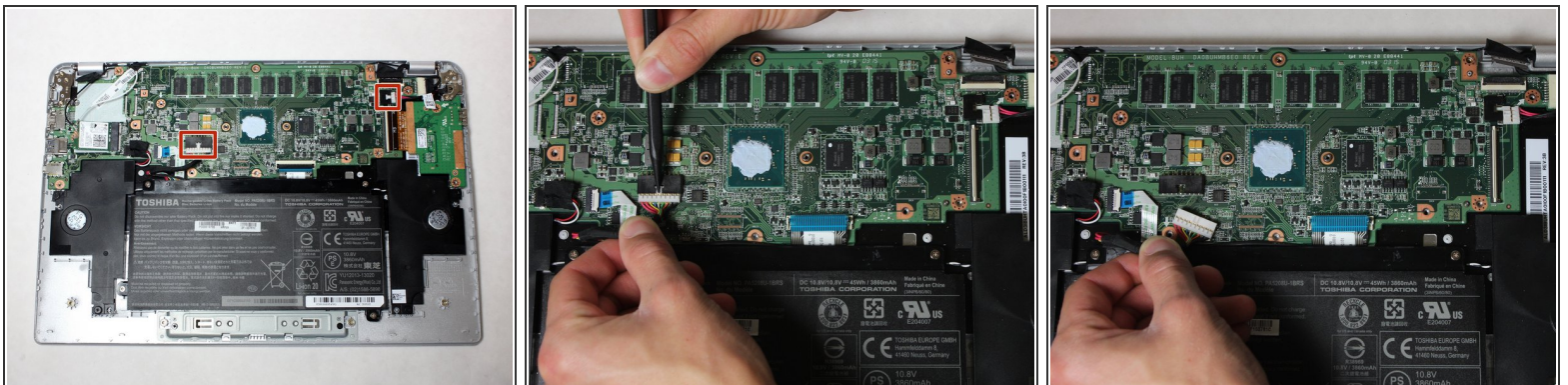


## Step 8



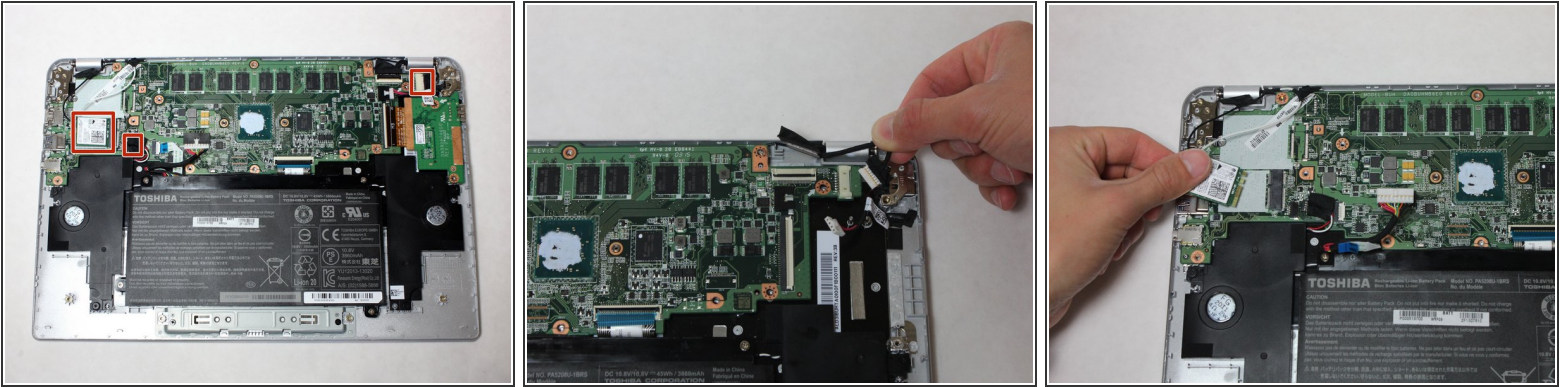
- Flip up the plastic clamps holding down the 4 ribbon cables connected to the motherboard while gently pulling the ribbon cables from the sockets.

## Step 9



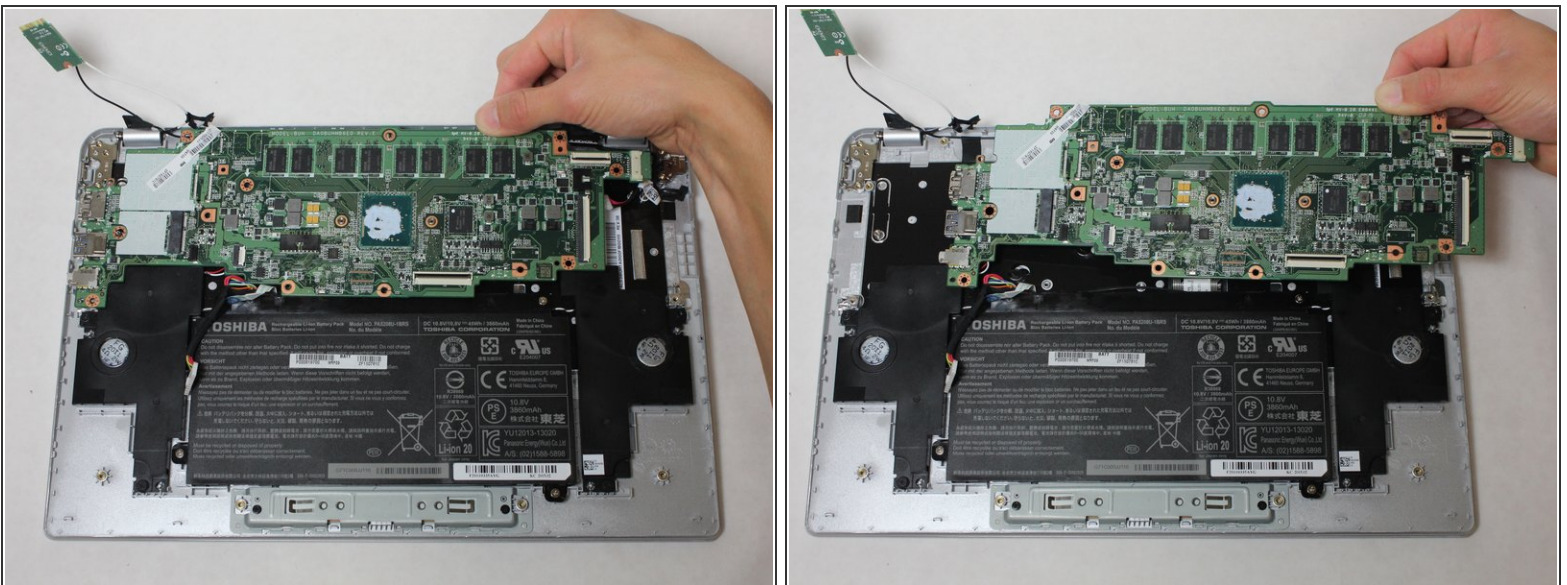
- Use the spudger to press down on the 2 white port cables, while also pulling each white port cable out of their sockets.

## Step 10



- Disconnect the motherboard from the 3 remaining cables by pulling the chords out of the sockets.

## Step 11



- Remove the motherboard by pulling upward and to the right.
- ⓘ Be careful not to damage the ports located on the left side of the motherboard during removal.

To reassemble your device, follow these instructions in reverse order.