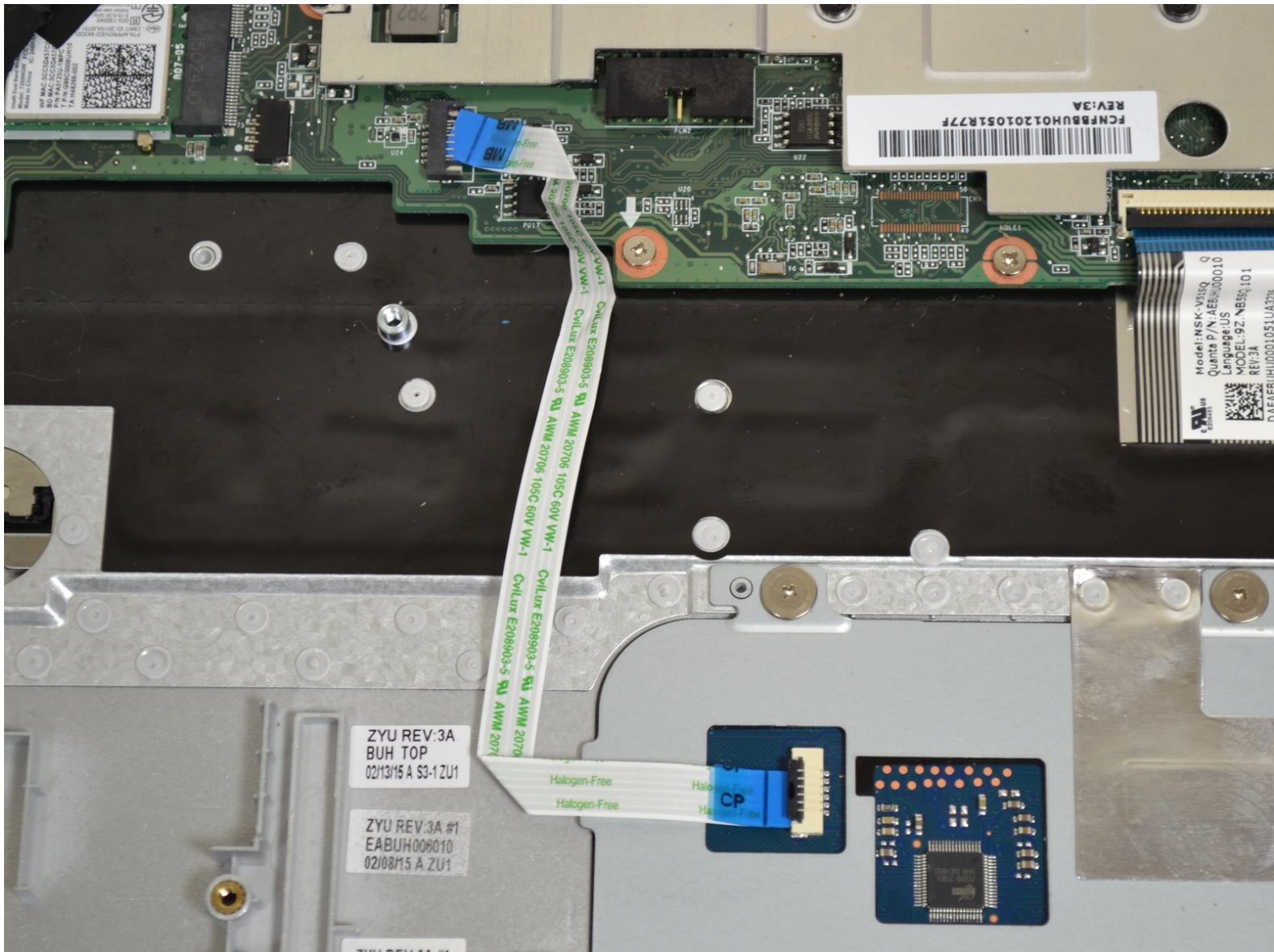




Toshiba Chromebook 2 Touchpad Replacement

Replacement of the touchpad on your Toshiba Chromebook 2 to get your touchpad to respond correctly to touch again.

Written By: Haley Hattendorf



This document was generated on 2019-09-18 10:15:34 PM (MST).

INTRODUCTION

A touchpad is extremely important in the use of laptops. The touchpad can often cause the cursor to not move in the right direction, or not at all. When these are continual problems, the best solution is to replace the faulty touchpad with a new one.

TOOLS:

- [Phillips #0 Screwdriver](#) (1)
 - [Spudger](#) (1)
-

Step 1 — Back Cover



- Remove all external devices from the Toshiba Chromebook 2.

Step 2



- Close the Toshiba Chromebook 2 and turn it over so that the bottom of the laptop is facing upwards toward you with the lettering on the bottom facing right side up.

Step 3



- Remove the 8 visible Phillips 8.25 mm screws using the Phillips #0 screwdriver.

Step 4



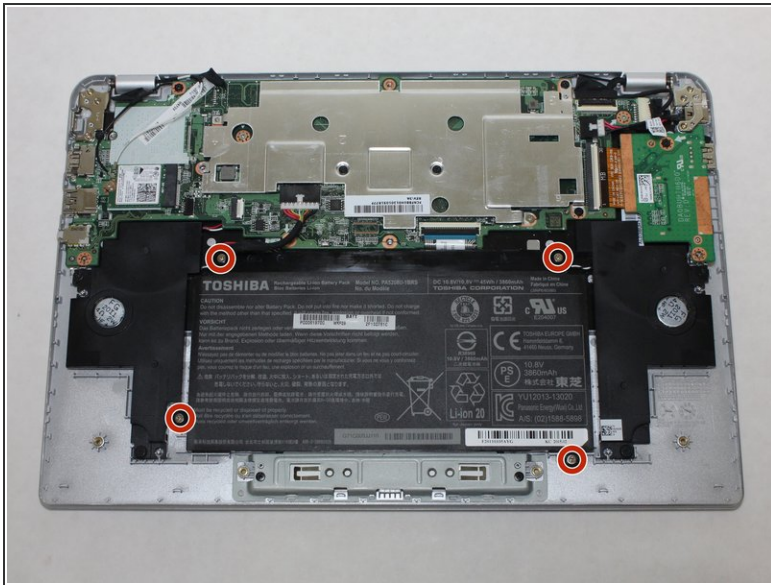
- Remove 2 hidden Phillips 8.25 mm screws located underneath the rubber grips at the back (opposite the hinges) with the Phillips #0 screwdriver.
- ⓘ The rubber grips are glued in place, so you'll need to peel them up with a spudger or other pry tool.

Step 5



- Remove the back panel by pulling up on 2 adjacent corners.

Step 6 — Battery



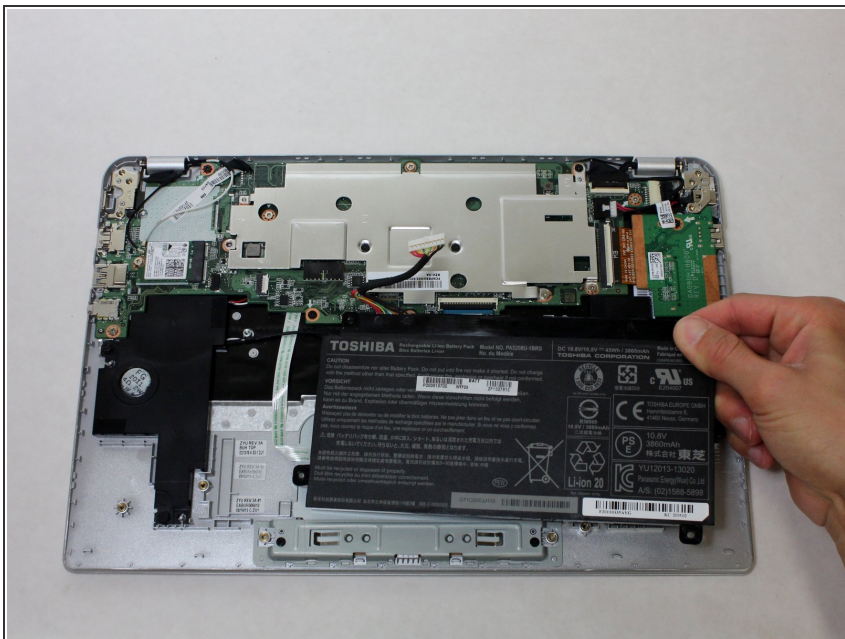
- Remove the 4 Phillips 2 mm screws holding the battery in place with the Phillips #0 screwdriver.

Step 7



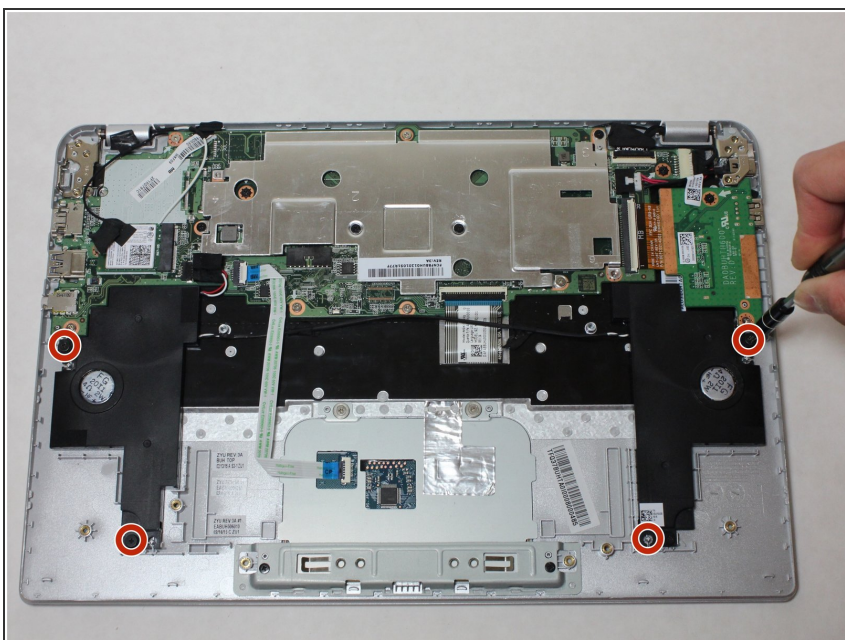
- Press down on the white clip and softly pull the wires out of the port to disconnect battery from the motherboard.

Step 8



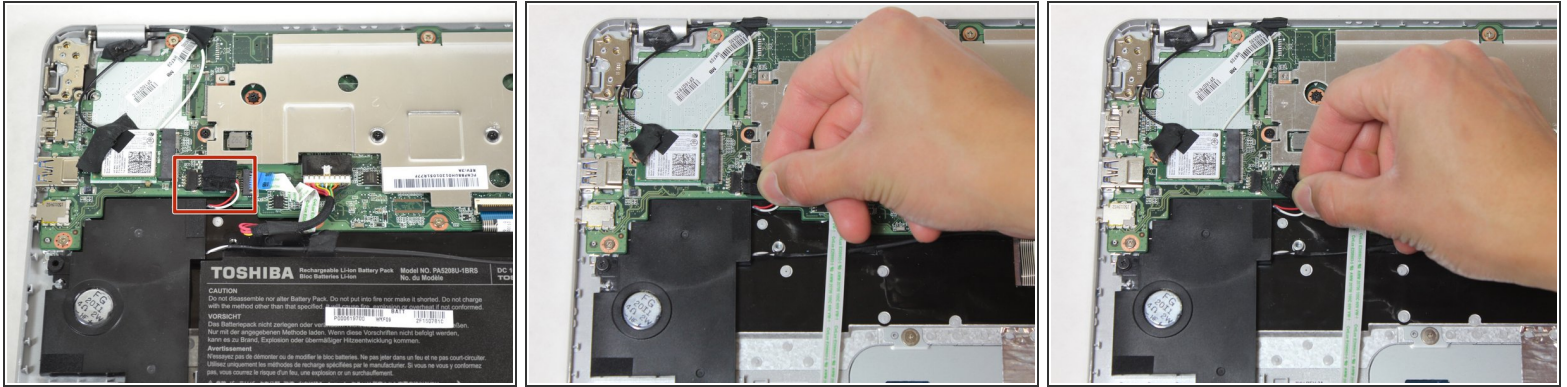
- Remove the battery by gently pulling up on the bottom corners.

Step 9 — Speakers



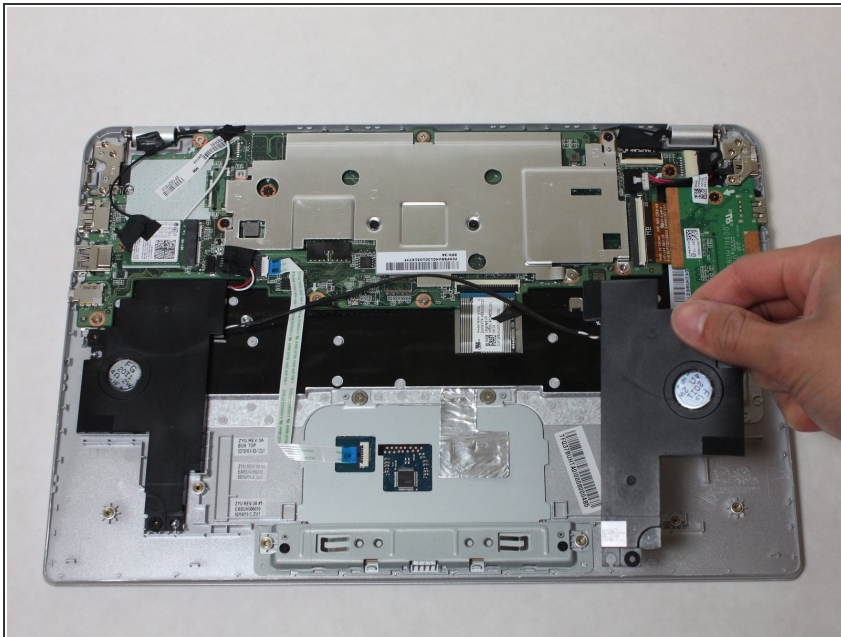
- Remove the 2 3.3 mm screws holding the left and right speakers with the Phillips #0 screwdriver.

Step 10



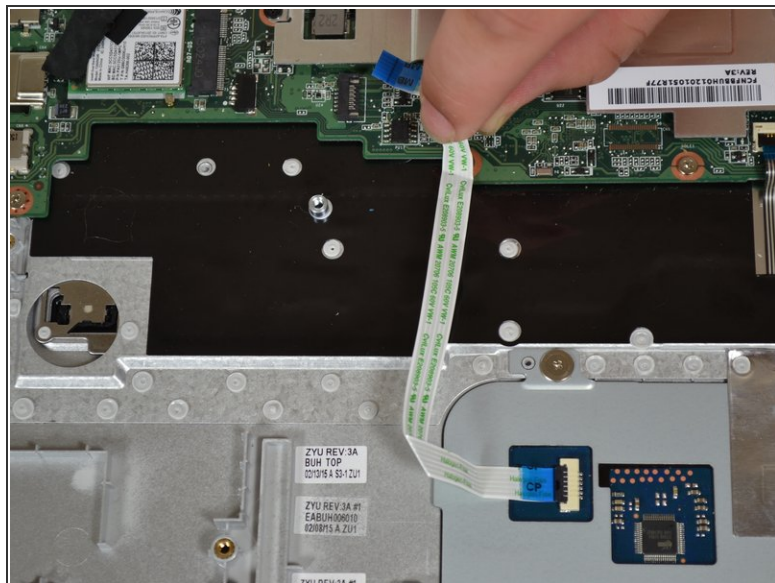
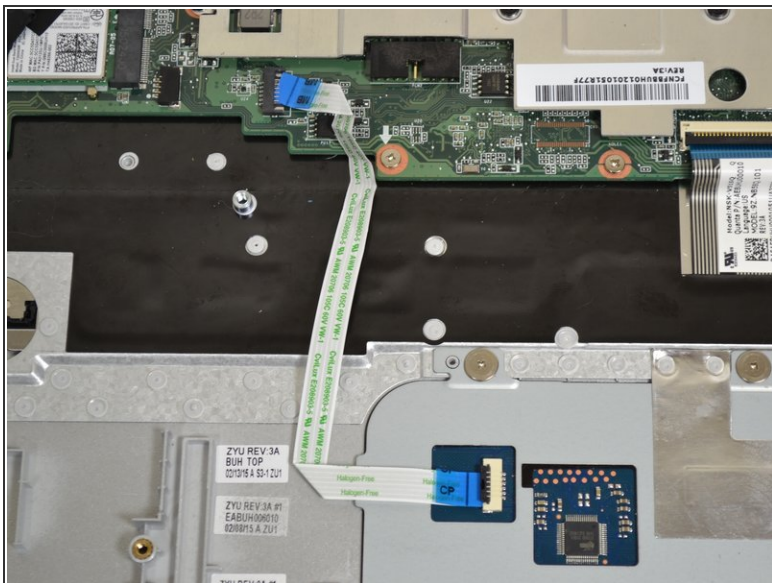
- Pull the red and white wires out of the socket above the left speaker to disconnect the speakers from the motherboard.

Step 11



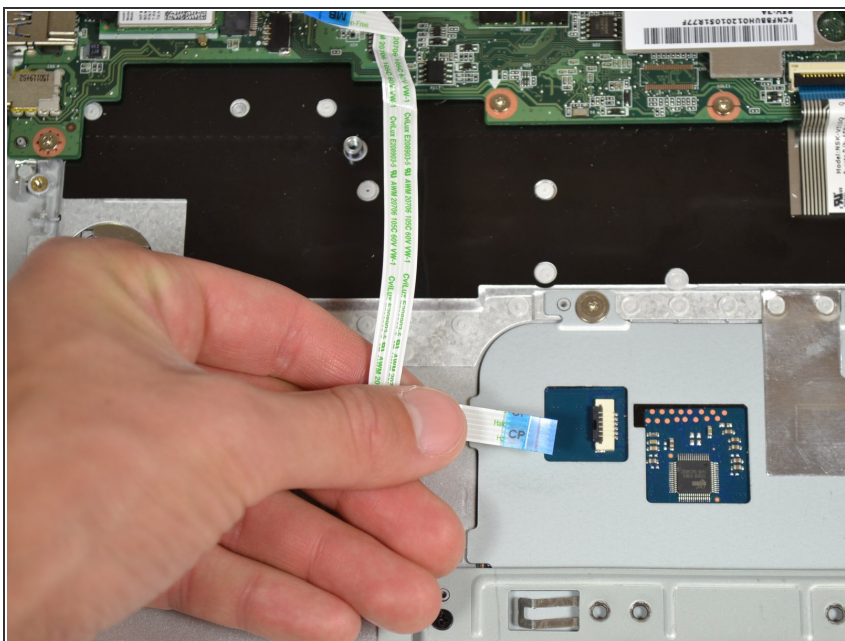
- Remove the speakers by lifting upwards.
- ⓘ Wiring connecting the left and right speakers may be taped to the top of the battery. Simply remove the tape to remove the speakers.

Step 12 — Touchpad



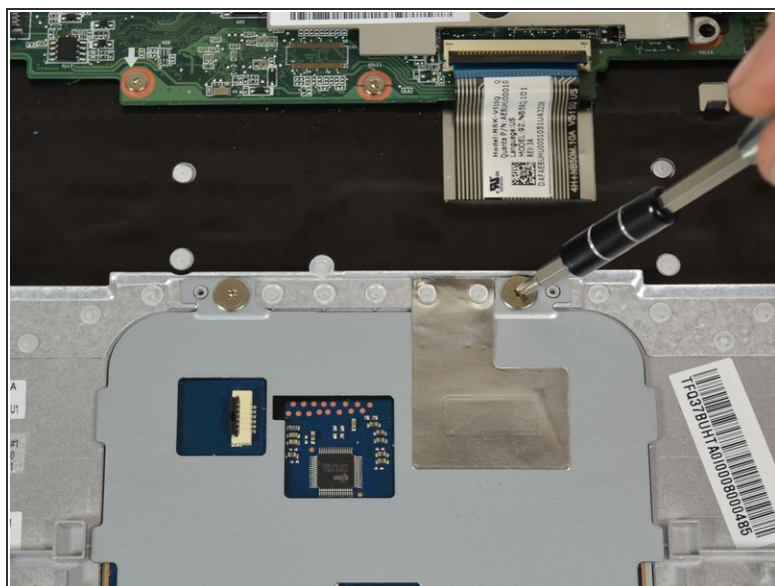
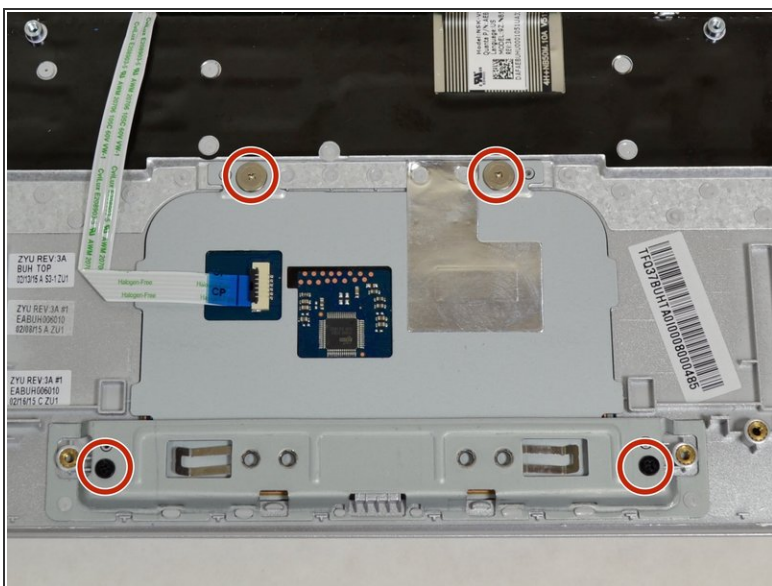
- Detach the ribbon cable connected to the motherboard by gently pulling near the top fold.

Step 13



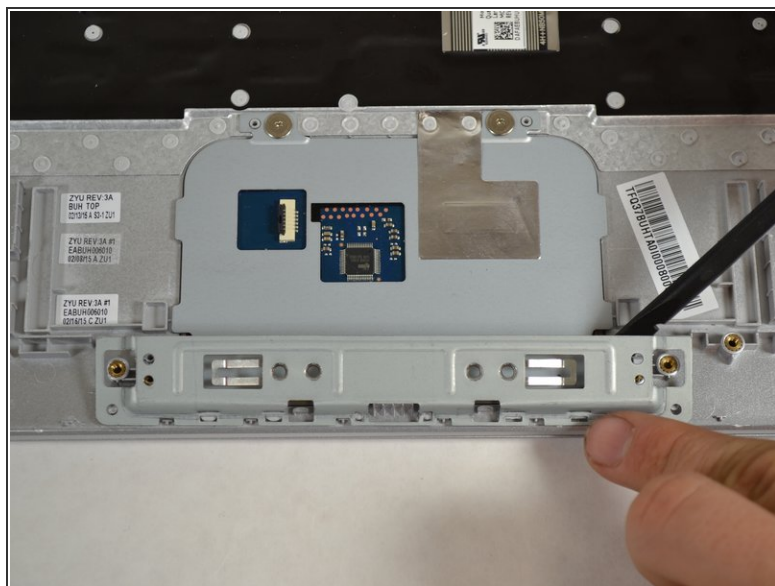
- Detach the ribbon cable connected to the touch pad by gently pulling near the bottom fold.

Step 14



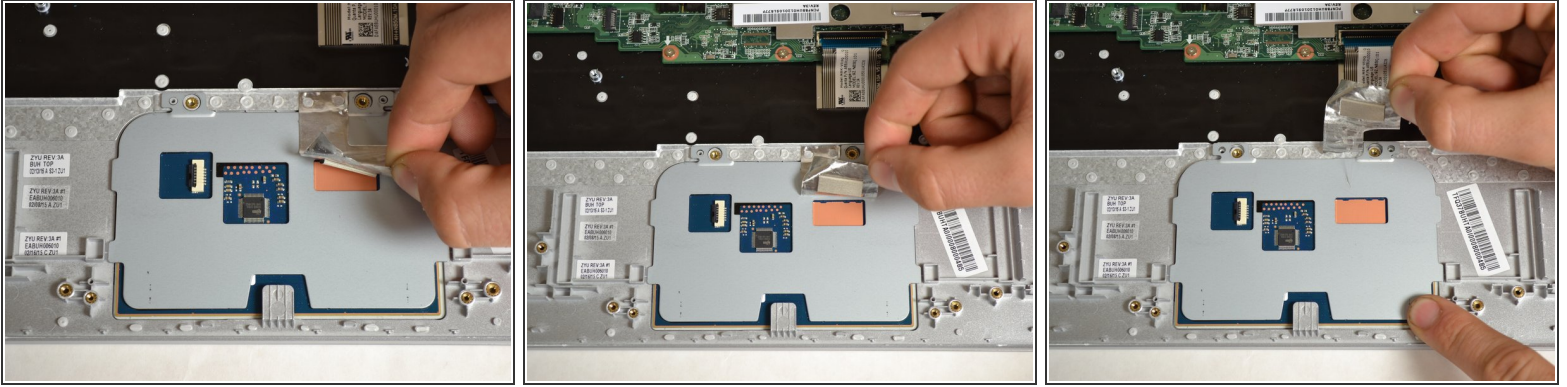
- Remove all four 3.70mm screws around the edges of the touchpad using a Phillips #0 screwdriver.

Step 15




- Use the spudger to push up on the metal cover below the touch pad until it reaches 90 degrees then pull up to detach.

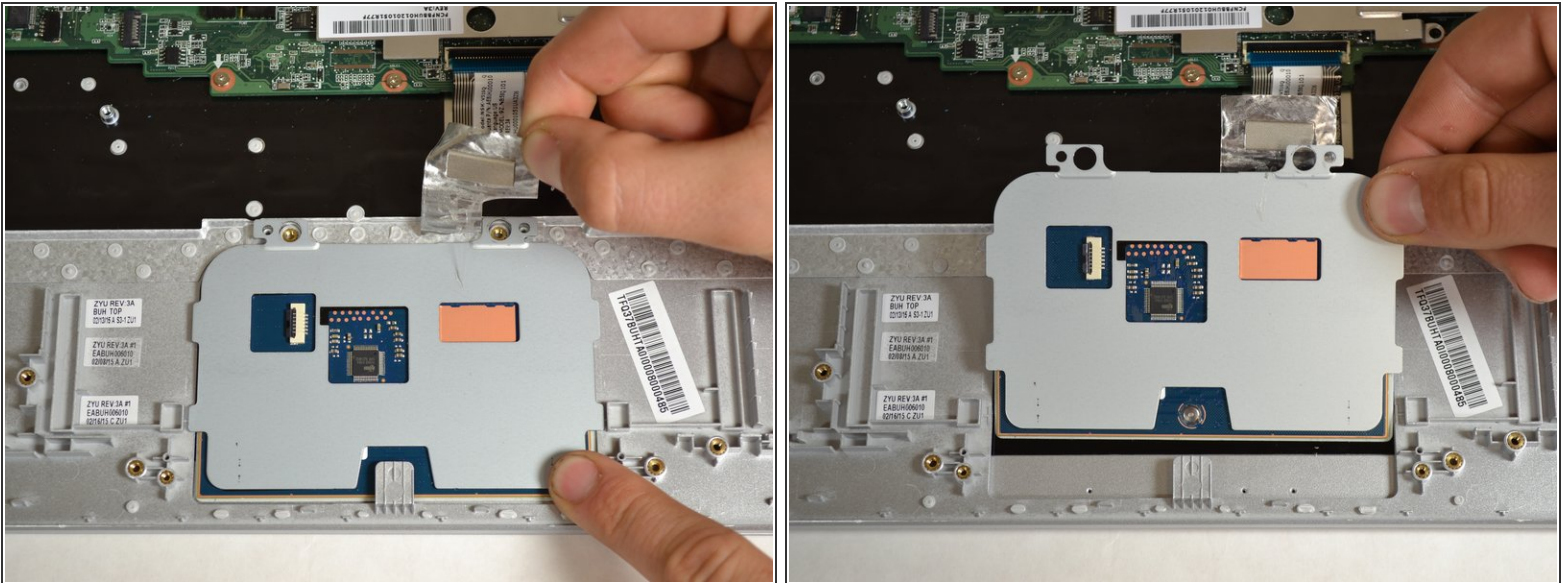
Step 16



- Peel back the aluminum foil piece on the top right corner of the touchpad.

 Move slowly and carefully, you will need the same aluminum foil piece to connect to your new touchpad.

Step 17



- Push down on the bottom right corner and slowly lift up in the upper right hand corner until the touch pad comes out.

To reassemble your device, follow these instructions in reverse order.