



Toshiba Dynabook T552-58G Fan Replacement

This is a replacement guide for the Toshiba Dynabook T552-58G fan.

Written By: Lilly Pilkington



INTRODUCTION

This guide will walk you through the process of replacing a fan in the Toshiba Dynabook T552-58G. You will need to replace the fan if it is faulty or broken. There are a few tools required for this guide.

TOOLS:

- [Phillips #0 Screwdriver](#) (1)
-

Step 1 — Back Panel




- Turn the Toshiba Dynabook T552-58G so that the back panel is facing you.

Step 2




- Remove the 10 screws located on the back panel of the Toshiba Dynabook T552-58G using a PH 0 screwdriver.

 Each screw will be 5.3 mm long.

Step 3



- Remove the black screw using the J0 screwdriver. This is located by the top right foot of the device.
- This will allow removal of the hard drive cover.
-  This screw will not come out of the hard drive cover.

Step 4



- Remove the single screw located below the hard drive using the J0 screwdriver. This screw is 5.3 mm long.

Step 5



- Remove two screws located diagonally from the bottom-left screw of the hard drive using a J0 screwdriver. The screw closest to the hard drive is 5.2 mm long and the screw farther away is 4.2 mm long.
- Remove the screw located diagonally from the top right screw of the hard drive using a J0 screwdriver. This screw is 5.2 mm long.

Step 6



- Slowly lift the back panel away from the computer.
- ⓘ There should be some resistance.
- Once lifted, carefully remove the back panel.

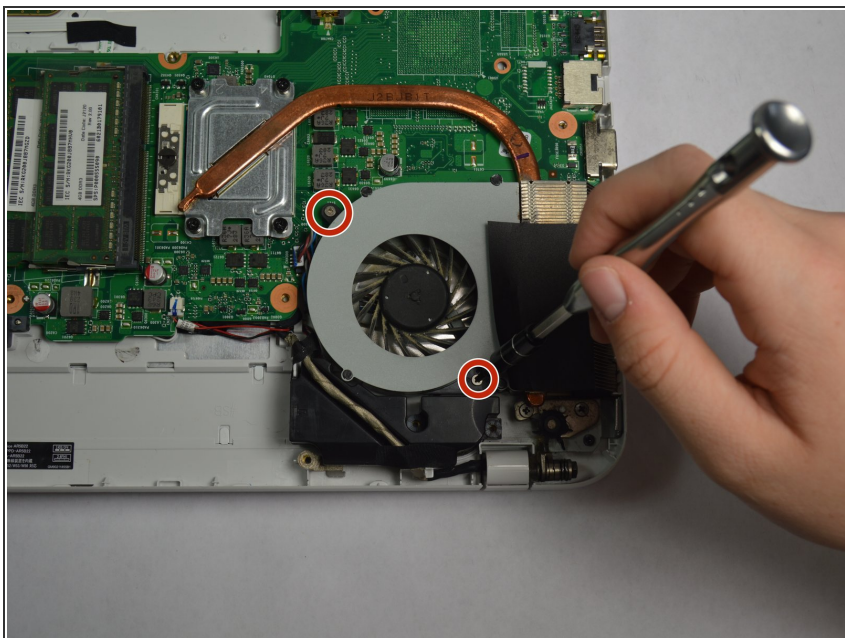
Step 7 — Fan



- After removing the back panel, locate the fan in the bottom right corner.

⚠ Make sure computer is turned off and unplugged.

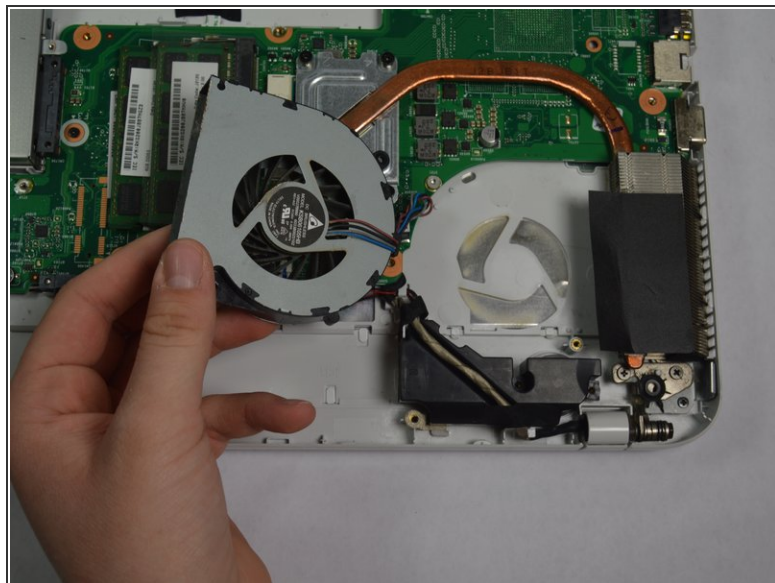
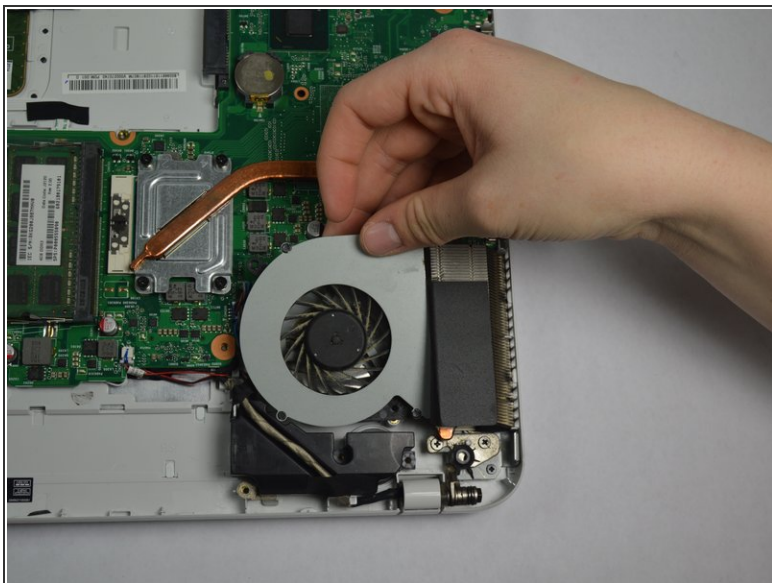
Step 8



- Remove the two screws located on the top left and bottom right of the fan. You should use a PH 0 screwdriver.

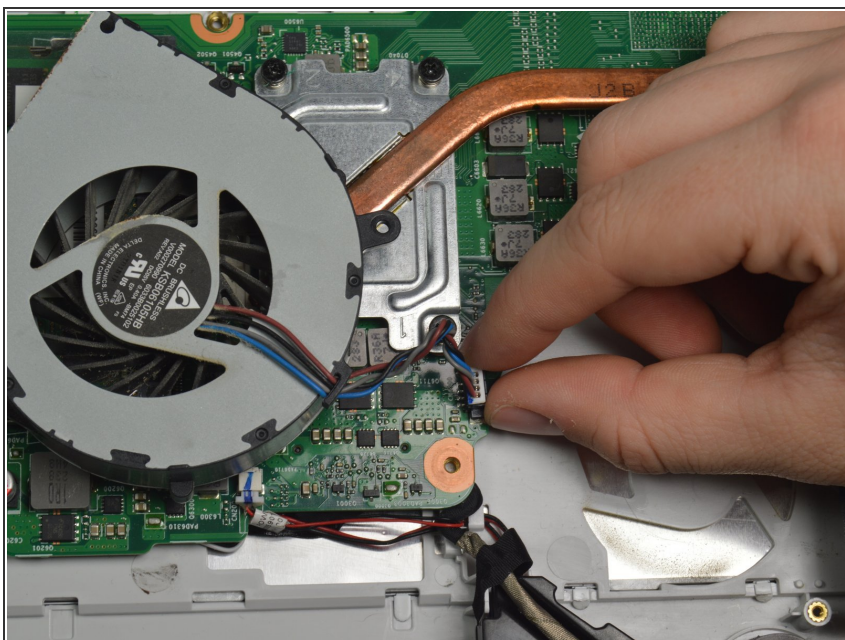
ⓘ Both screws are 2.7 mm long.

Step 9



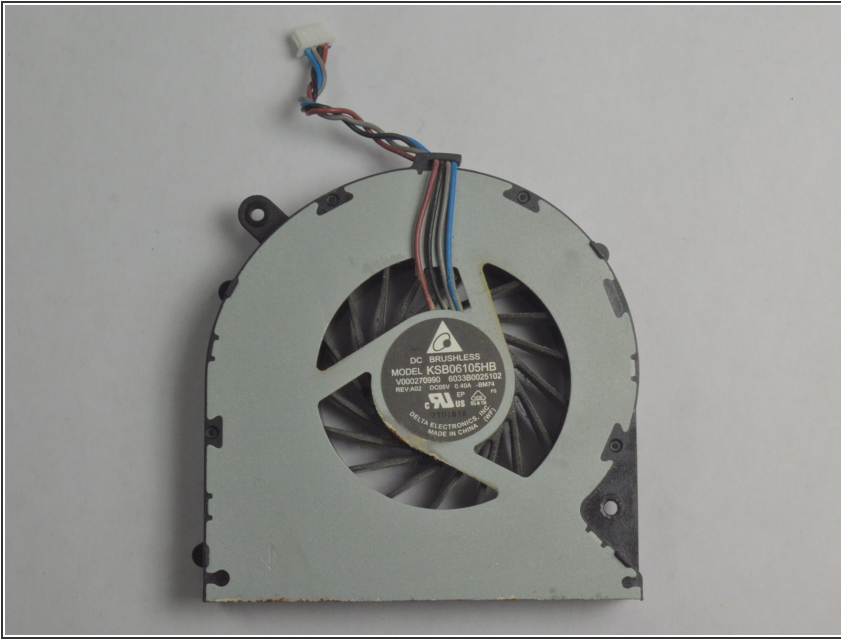
- Gently lift the fan away from the base. There should be three wires that are connected to the base of the computer through a port.

Step 10



- With your fingers, carefully pinch the white connector and pull up.
- ⓘ There will be some resistance.

Step 11



- Remove the faulty fan.

To reassemble your device, follow these instructions in reverse order.