



Toshiba Dynabook T552-58G Hard Drive Replacement

The hard drive is located in the back panel of the computer. If you need to replace the hard drive due to faulty function, follow this guide.

Written By: Laney Pilkington



This document was generated on 2020-01-19 07:25:22 PM (MST).

INTRODUCTION

If your computer is crashing, or your computer's hard drive has been damaged, use this guide to replace the hard drive. By following this guide, you will be able to replace the hard drive with little difficulty.

TOOLS:

- [Phillips #0 Screwdriver](#) (1)
-

Step 1 — Back Panel




- Turn the Toshiba Dynabook T552-58G so that the back panel is facing you.

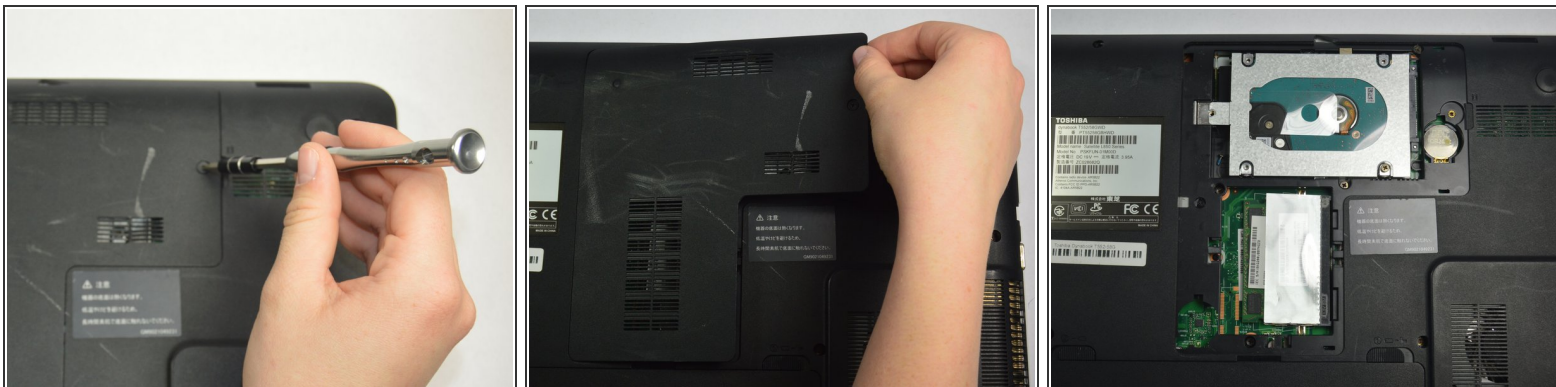
Step 2



- Remove the 10 screws located on the back panel of the Toshiba Dynabook T552-58G using a PH 0 screwdriver.

 Each screw will be 5.3 mm long.

Step 3



- Remove the black screw using the J0 screwdriver. This is located by the top right foot of the device.
- This will allow removal of the hard drive cover.
- ⓘ This screw will not come out of the hard drive cover.

Step 4



- Remove the single screw located below the hard drive using the J0 screwdriver. This screw is 5.3 mm long.

Step 5



- Remove two screws located diagonally from the bottom-left screw of the hard drive using a J0 screwdriver. The screw closest to the hard drive is 5.2 mm long and the screw farther away is 4.2 mm long.
- Remove the screw located diagonally from the top right screw of the hard drive using a J0 screwdriver. This screw is 5.2 mm long.

Step 6



- Slowly lift the back panel away from the computer.
- ⓘ There should be some resistance.
- Once lifted, carefully remove the back panel.

Step 7 — Hard Drive



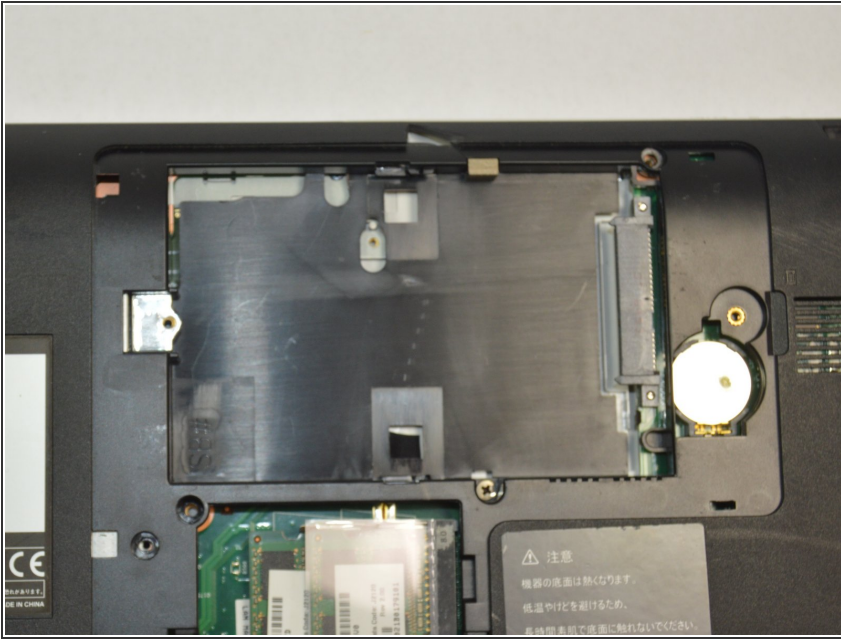
- The hard drive is located in the under the L-shaped panel on the back of the computer.

Step 8



- Carefully push the hard drive to the left

Step 9



- Gently lift the hard drive using your fingers.

To reassemble your device, follow these instructions in reverse order.