



Toshiba Encore Mini Battery Replacement

Follow this guide to replace the battery on your Toshiba Encore Mini.

Written By: Erica Jouglard



INTRODUCTION

This replacement guide will walk you through the steps needed to replace the battery on your Toshiba Encore Mini and will serve as the first step for any other replacements you may need to perform. Prior to removing any parts on your device, backing-up all data and photos to an external storage device is recommended. In this guide, you will be removing the following:

- Back Cover
- Battery



TOOLS:

- [Tweezers](#) (1)
 - [Spudger](#) (1)
-

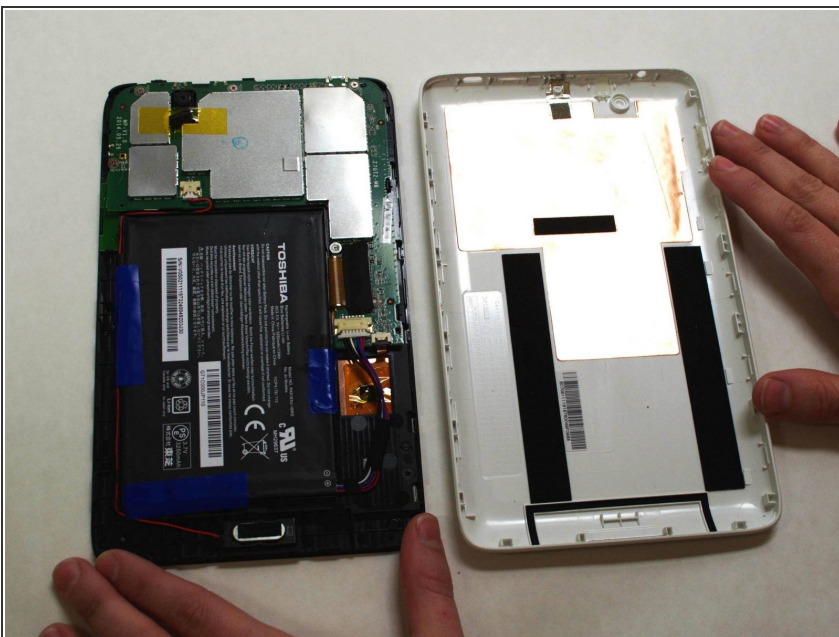
Step 1 — Battery



***i* To replace the battery, the rear cover must first be removed.**

- Using the flat end of the spudger, gently pry open the back case from the rest of the device.
- i*** It may be easier to start along one of the long edges and carefully work your way toward the corner, then along the short edge.

Step 2



- Remove the rear cover and set it aside.

Step 3



- Carefully remove the electrical tape that holds the battery in place.

Step 4



- Using needle-nose tweezers, gently push the large white wire connector (connected to the black, red and blue wires) out of its housing.

Step 5



- Gently lift the battery out of the device.

⚠ Be careful not to pull on the connecting wires.

To reassemble your device, follow these instructions in reverse order.