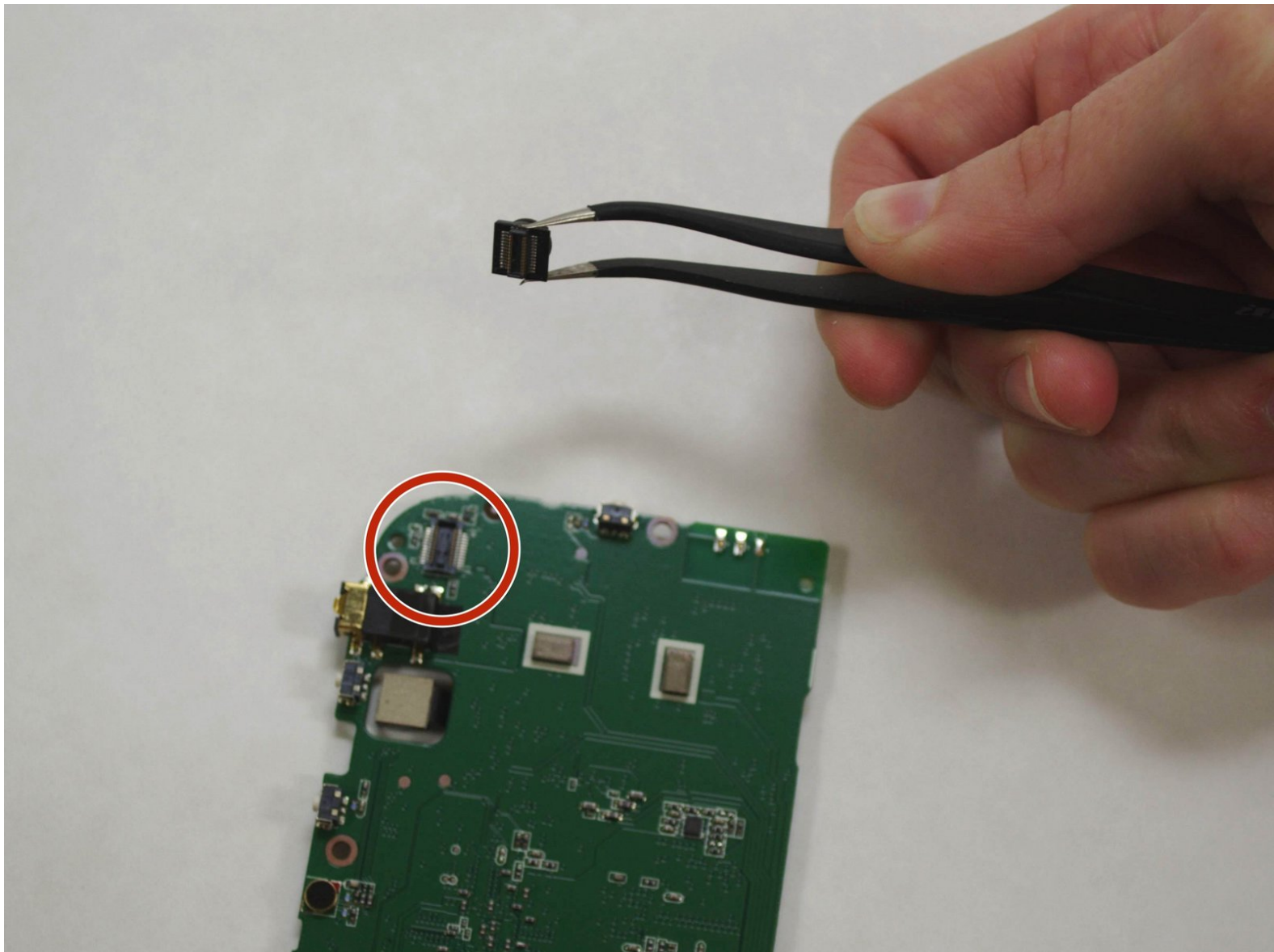




# Toshiba Encore Mini Front-Facing Camera Replacement

This guide shows you how to replace the front-facing camera on this device.

Written By: Shirley Low



---

## INTRODUCTION

The Toshiba Encore Mini is equipped with a built-in front-facing camera and a built-in rear-facing camera. Before replacing either camera, we recommend you back-up any photos (or other data) to an external storage device. Also, you will need a good place to keep track of five very small screws, as you will need them for reassembly.



### TOOLS:

- [Phillips #000 Screwdriver](#) (1)
  - [Spudger](#) (1)
  - [Tweezers](#) (1)
-

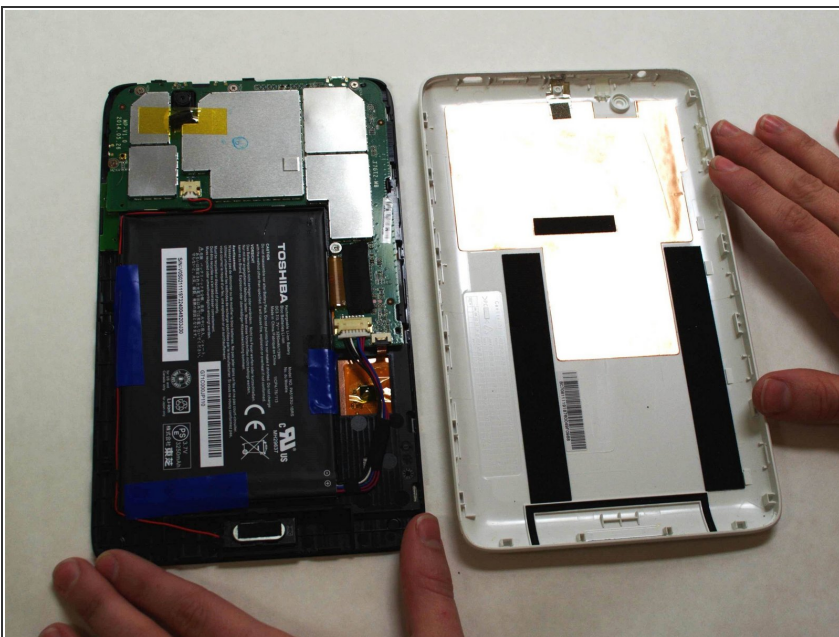
## Step 1 — Battery



***i* To replace the battery, the rear cover must first be removed.**

- Using the flat end of the spudger, gently pry open the back case from the rest of the device.
- i*** It may be easier to start along one of the long edges and carefully work your way toward the corner, then along the short edge.

## Step 2



- Remove the rear cover and set it aside.



## Step 3



- Carefully remove the electrical tape that holds the battery in place.

## Step 4




- Using needle-nose tweezers, gently push the large white wire connector (connected to the black, red and blue wires) out of its housing.

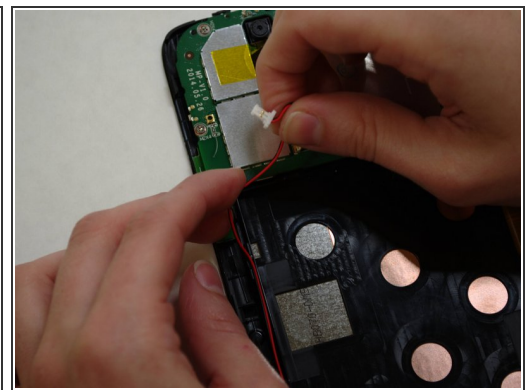
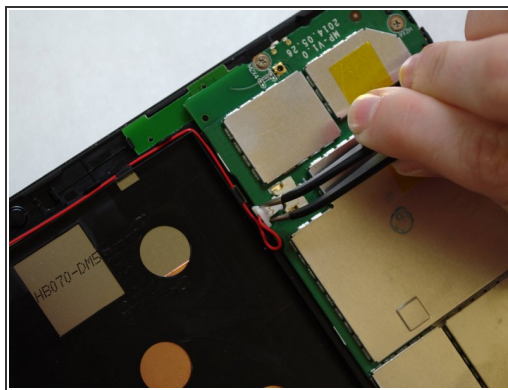
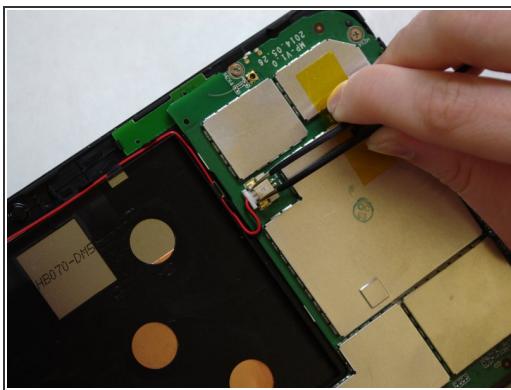
## Step 5



- Gently lift the battery out of the device.

 Be careful not to pull on the connecting wires.

## Step 6 — Front-Facing Camera

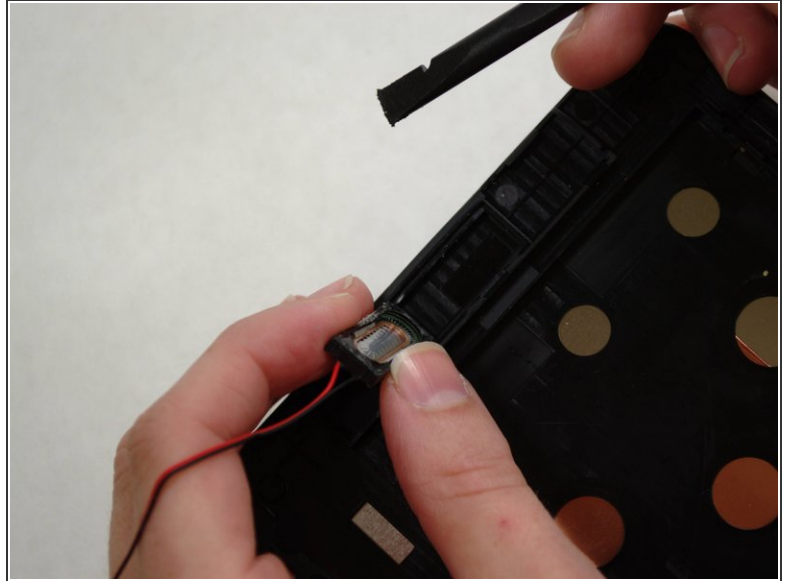


 The audio module must be removed to replace the front-facing camera.

- Using needle-nose tweezers, carefully push the small white wire connector (red/black wires) out of its housing.
- Gently remove red/black wire strands from the clips holding them to the back of the screen.

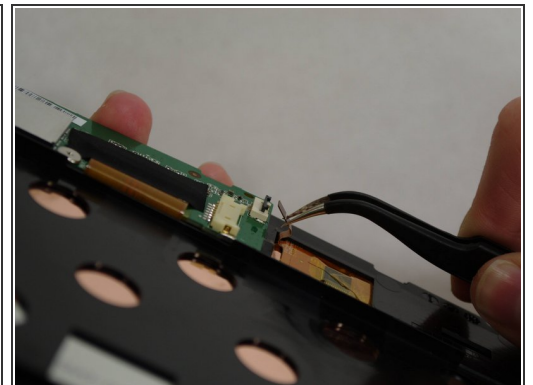
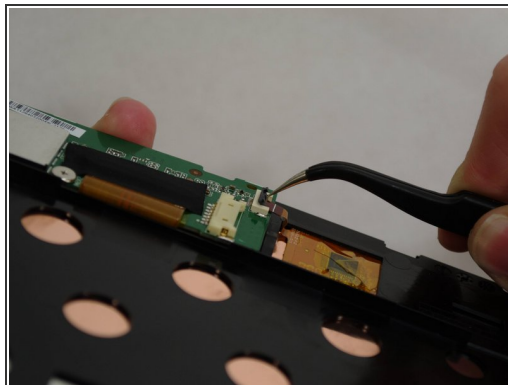
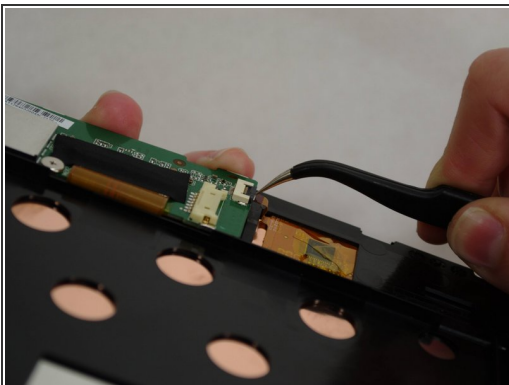


## Step 7



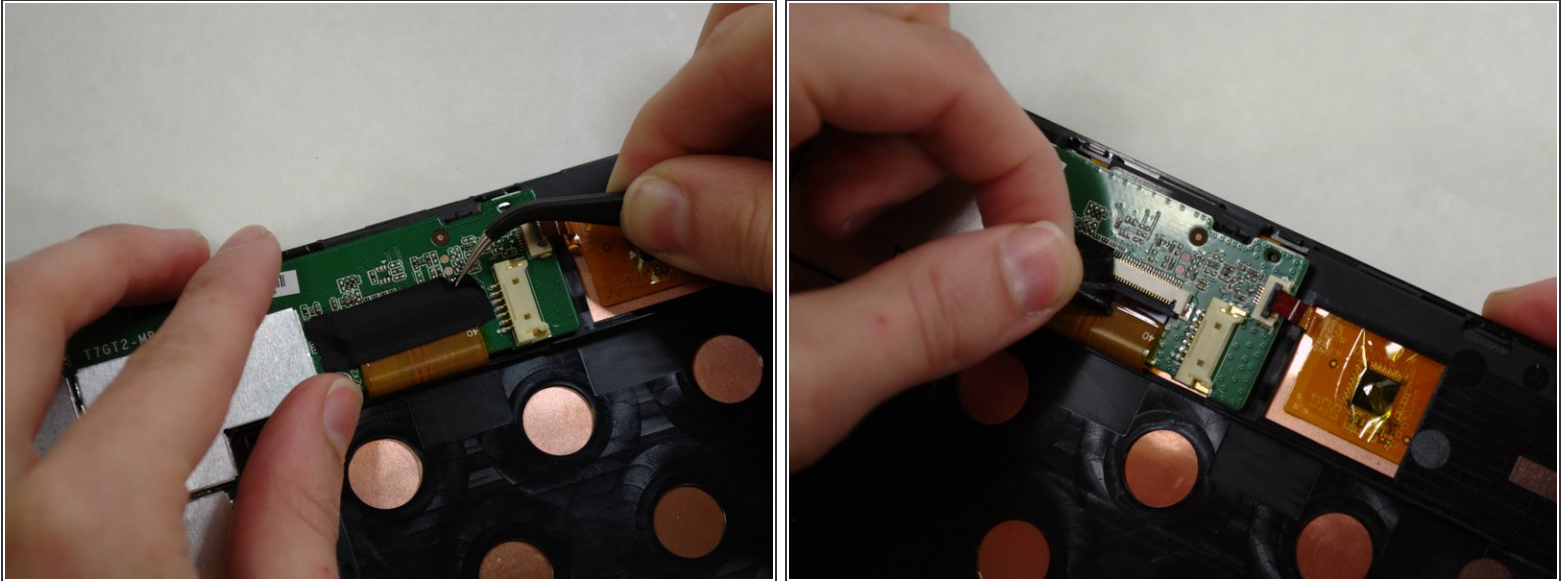
- Gently pry audio module from the back of the screen using tweezers and spudger. **Be careful not to pull on the wires.**
- ❗ **Adhesive on the bottom of the speaker module may make it difficult to remove.**
- Set the audio module and attached wire aside.

## Step 8



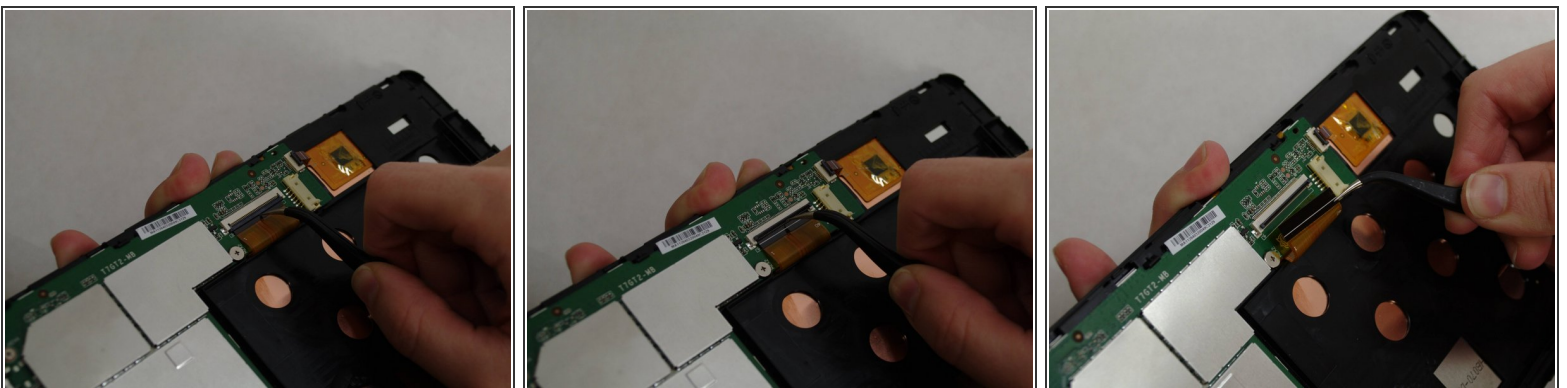
- Using needle-nose tweezers, **carefully** flip up the dark gray cover on the right of the device holding the **small** orange ribbon in place. (It is approximately 1/4" wide.)
- With the tweezers, **carefully** pull the small ribbon out of its housing. It will stay attached to the device at the other end.

## Step 9



- ❗ A wide orange/gold ribbon connects the screen to the motherboard. (Ribbon is approximately 1" wide.)
- Carefully pull the black tape off the ribbon housing and set it aside. You will need to replace the tape when reassembling the device.

## Step 10

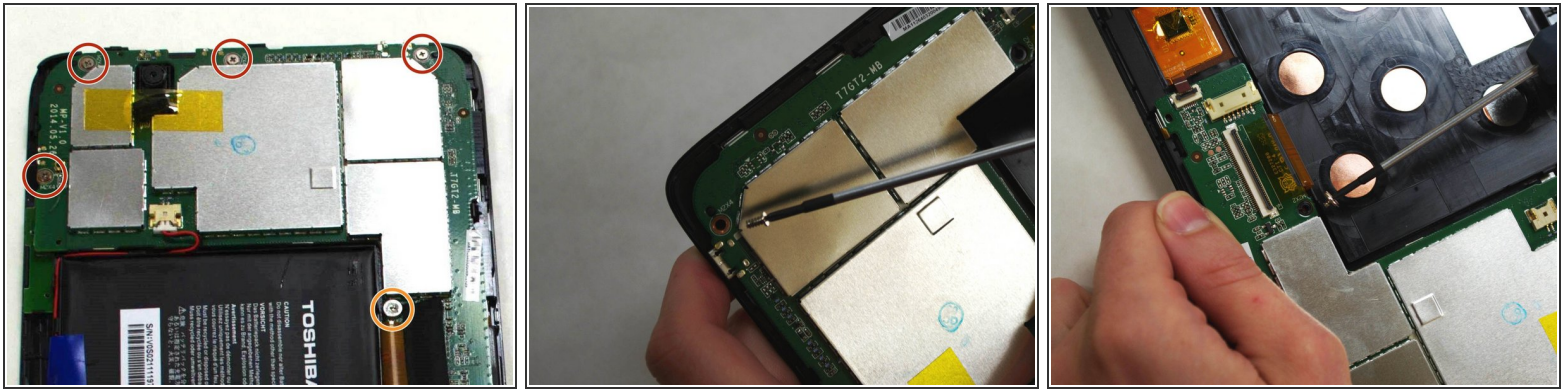


⚠ **Damaging this ribbon will permanently disable your device!**

- Using needle-nose tweezers, **carefully** flip up the dark gray cover.
- With the tweezers, **carefully** pull the wide ribbon from its housing. It will stay attached to the device at the other end.

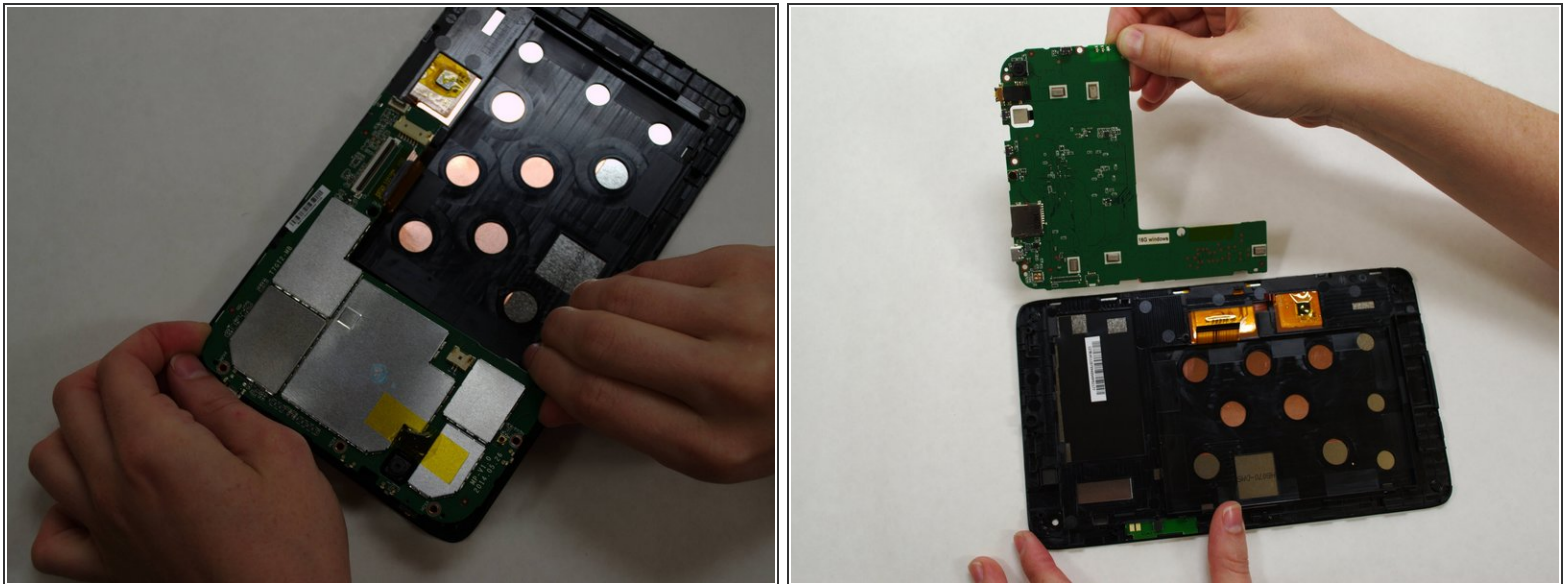


## Step 11



- Using a Phillips 000 screwdriver, remove the screws holding components together.
- Remove *four* 4.2 mm Phillips screws.
- Remove *one* 3mm Phillips screw.

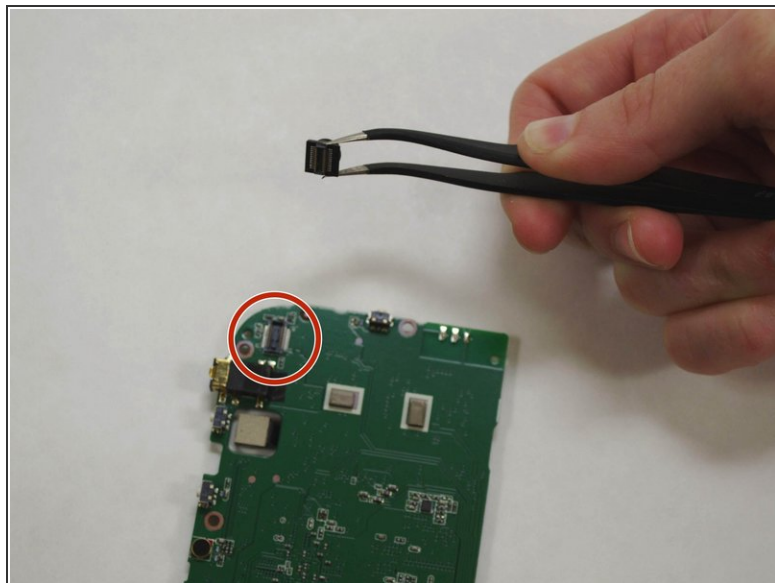
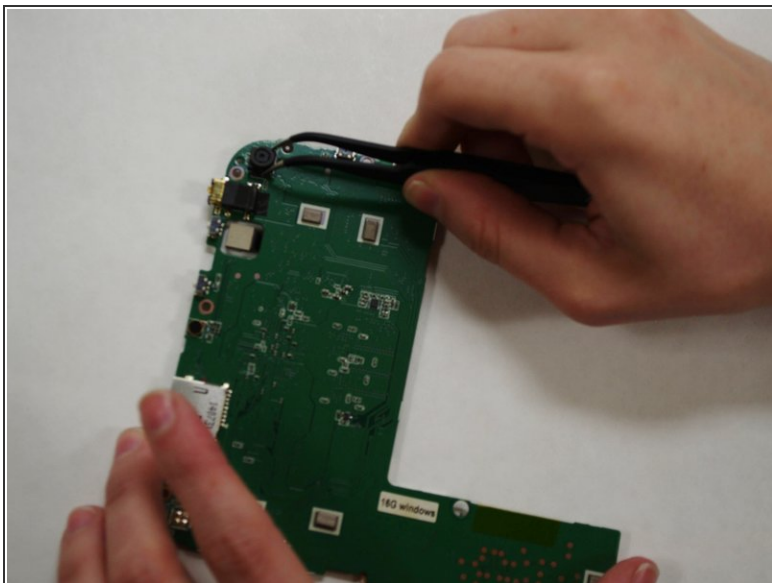
## Step 12



- Holding the motherboard **carefully** by the edges, gently lift it up off the screen and **carefully** set it aside.
- ⓘ The motherboard may resist as you try to lift it --this is normal.



## Step 13



- i The front-facing camera may dislodge freely when removing the motherboard.
- If camera has not already "popped" off the motherboard, use needle-nose tweezers to gently grasp the camera and remove from motherboard.

To reassemble your device, follow these instructions in reverse order.