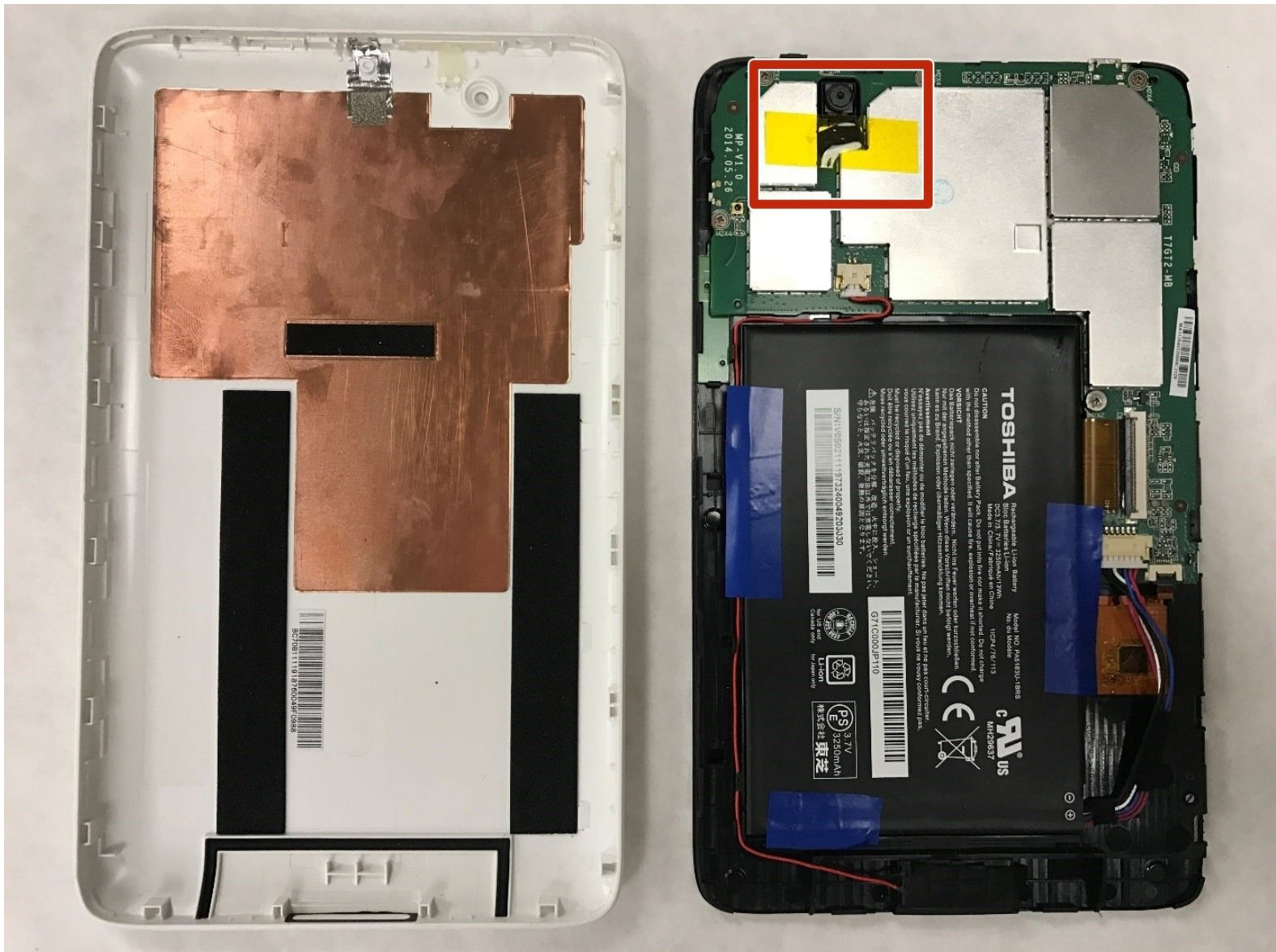




# Toshiba Encore Mini Rear-Facing Camera Replacement

Step by step instructions to replace the rear-facing camera of a Toshiba Encore Mini.

Written By: Anthony Bivens



## INTRODUCTION

The Toshiba Encore Mini has a rear-facing camera which is attached to the motherboard and requires battery removal for replacement. Therefore be advised to backup any data to external storage before beginning. As well as obtain a system to organize small screws and hand tools.

---

### TOOLS:

- [iFixit Opening Tools](#) (1)
  - [Spudger](#) (1)
  - [Phillips #000 Screwdriver](#) (1)
  - [Tweezers](#) (1)
-

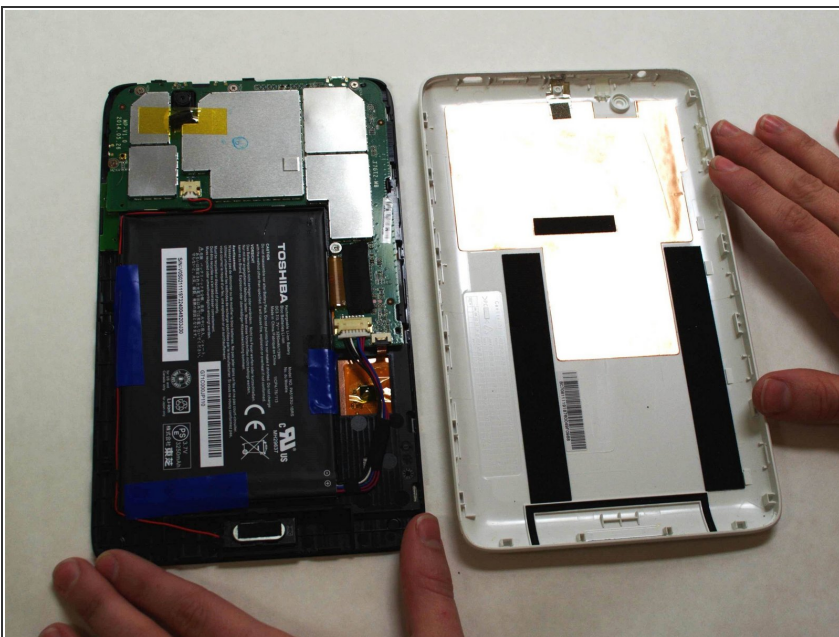
## Step 1 — Battery



***i* To replace the battery, the rear cover must first be removed.**

- Using the flat end of the spudger, gently pry open the back case from the rest of the device.
- i*** It may be easier to start along one of the long edges and carefully work your way toward the corner, then along the short edge.

## Step 2



- Remove the rear cover and set it aside.



## Step 3



- Carefully remove the electrical tape that holds the battery in place.

## Step 4



- Using needle-nose tweezers, gently push the large white wire connector (connected to the black, red and blue wires) out of its housing.

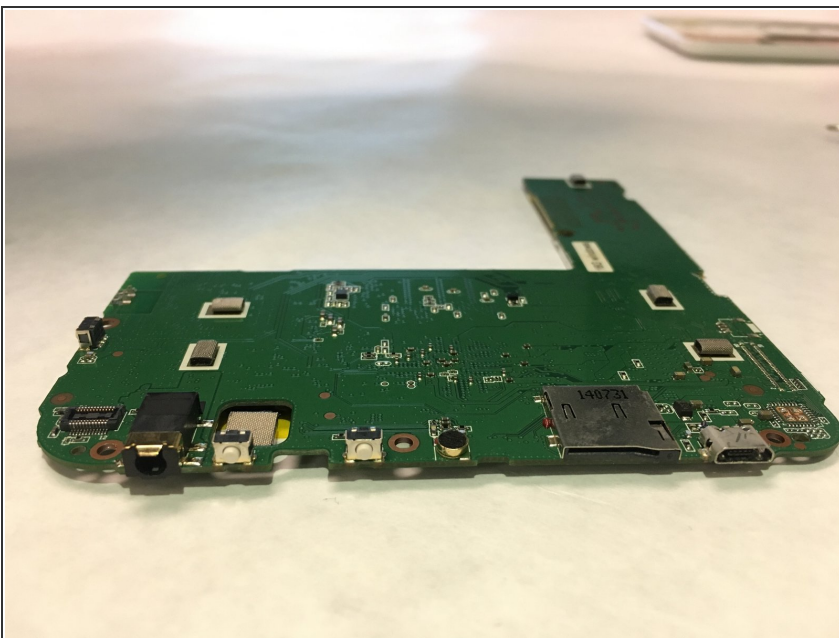
## Step 5



- Gently lift the battery out of the device.

⚠ Be careful not to pull on the connecting wires.

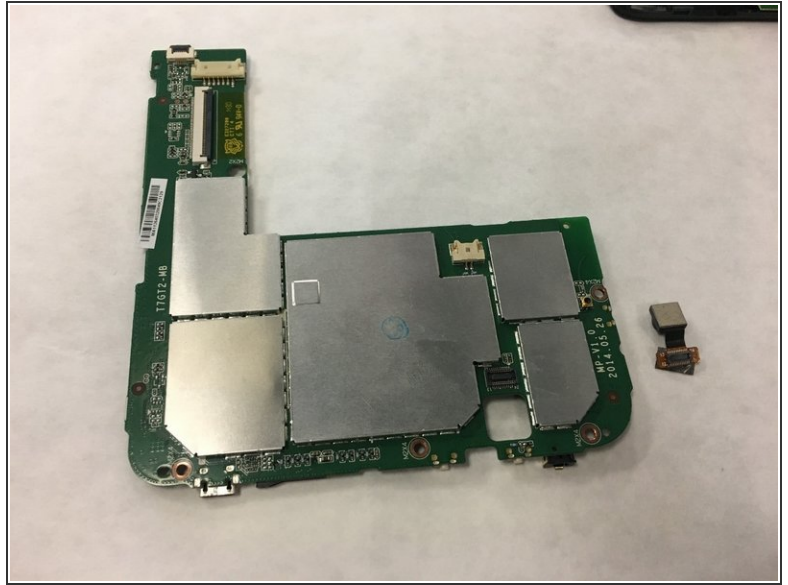
## Step 6 — Motherboard



- The motherboard completely detached from the device.

ⓘ The headphone jack and power plug are soldered to the motherboard. Therefore the motherboard must be replaced to replace these components.

## Step 7 — Rear-Facing Camera



- Remove yellow tape.
- Use tweezers to pull on the camera housing until it is free of the motherboard.

To reassemble your device, follow these instructions in reverse order.