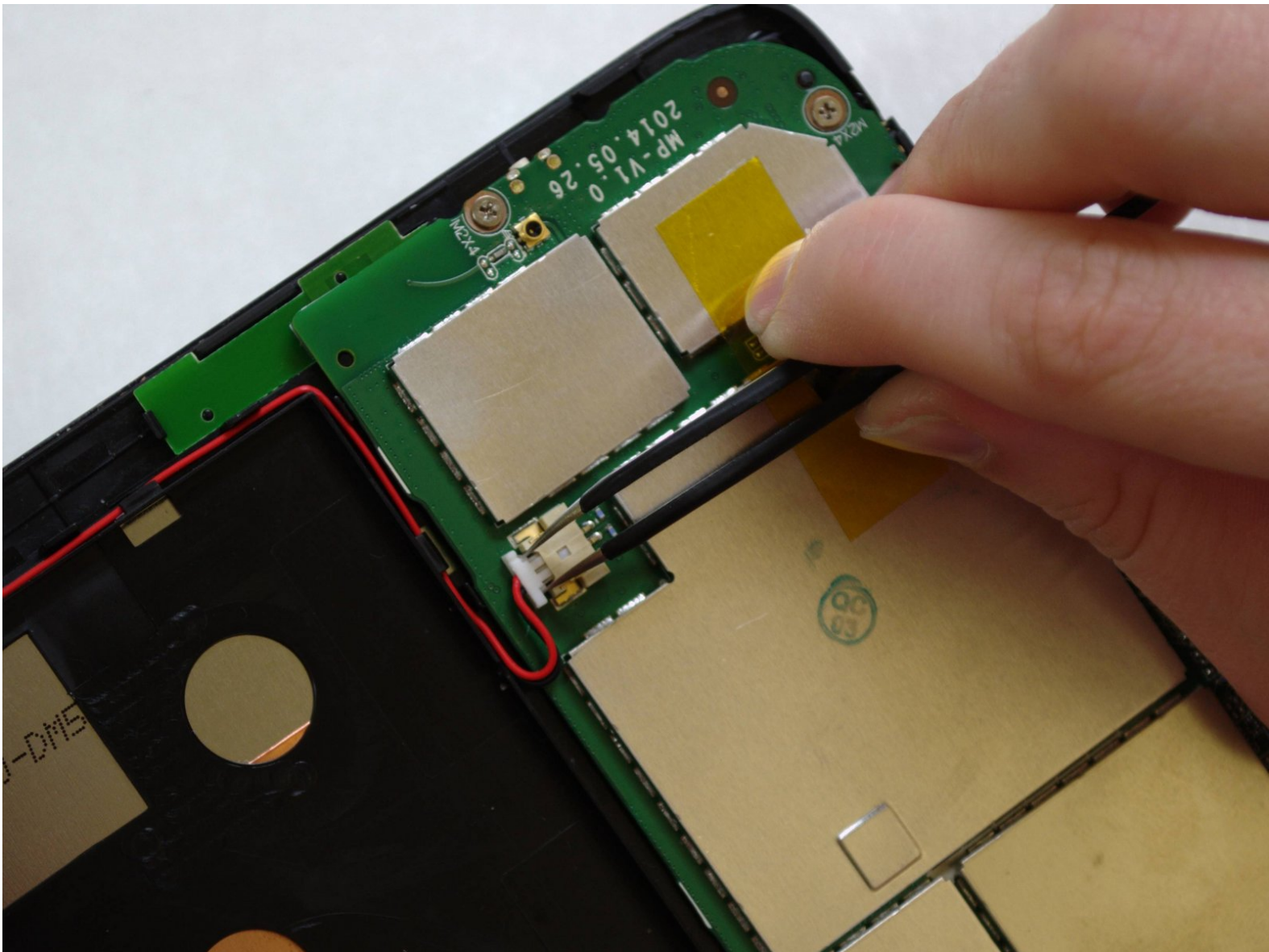




# Toshiba Encore Mini Screen Replacement

This guide will show you the steps involved to replace the screen/display for the Toshiba Encore Mini device.

Written By: Christine co



---

## INTRODUCTION

Before working on your device, we recommend backing-up your data to an external storage drive. Also, make sure you have good way to keep track of five very small screws as you will need them for reassembly. The most challenging part of replacing the screen is likely to be removing the back cover.

---

### TOOLS:

- [Phillips #000 Screwdriver](#) (1)
  - [Spudger](#) (1)
  - [Tweezers](#) (1)
-

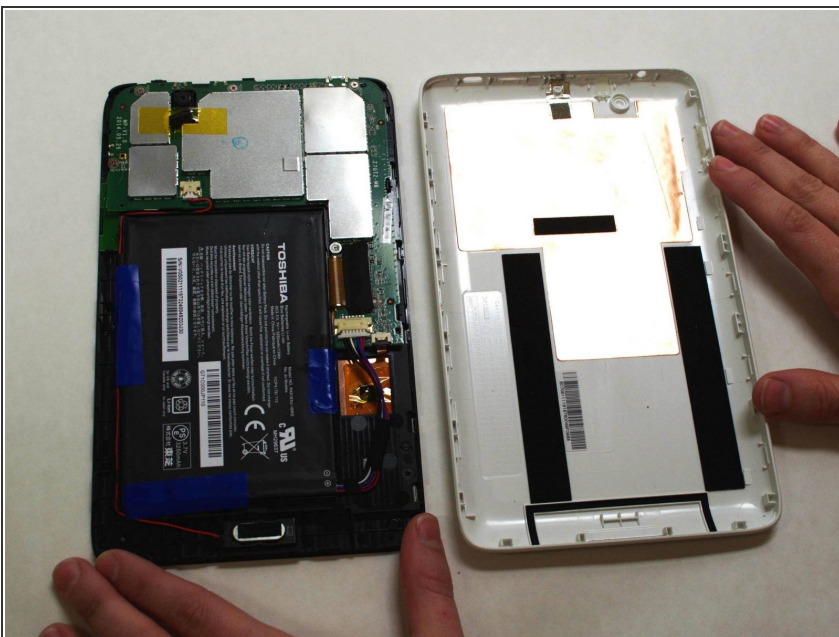
## Step 1 — Battery



***i* To replace the battery, the rear cover must first be removed.**

- Using the flat end of the spudger, gently pry open the back case from the rest of the device.
- i*** It may be easier to start along one of the long edges and carefully work your way toward the corner, then along the short edge.

## Step 2



- Remove the rear cover and set it aside.

### Step 3



- Carefully remove the electrical tape that holds the battery in place.

### Step 4




- Using needle-nose tweezers, gently push the large white wire connector (connected to the black, red and blue wires) out of its housing.

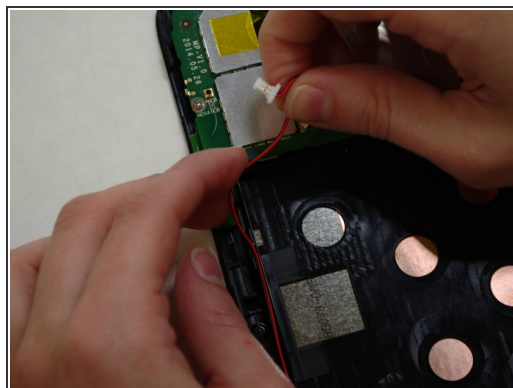
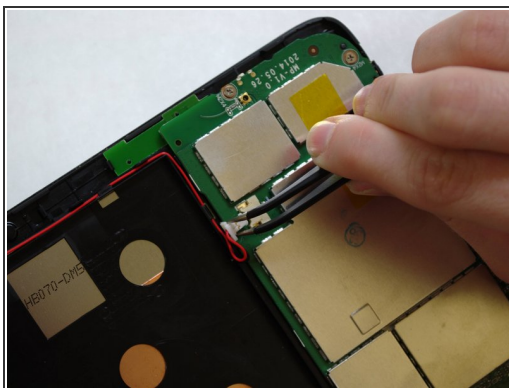
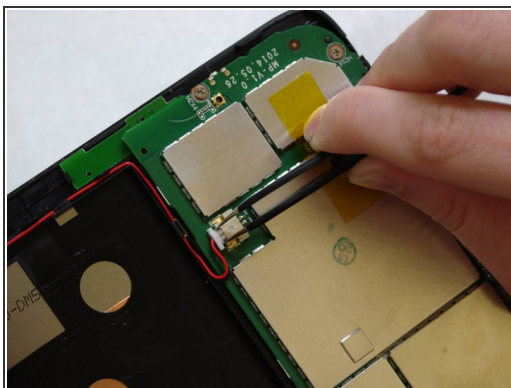
## Step 5



- Gently lift the battery out of the device.

 Be careful not to pull on the connecting wires.

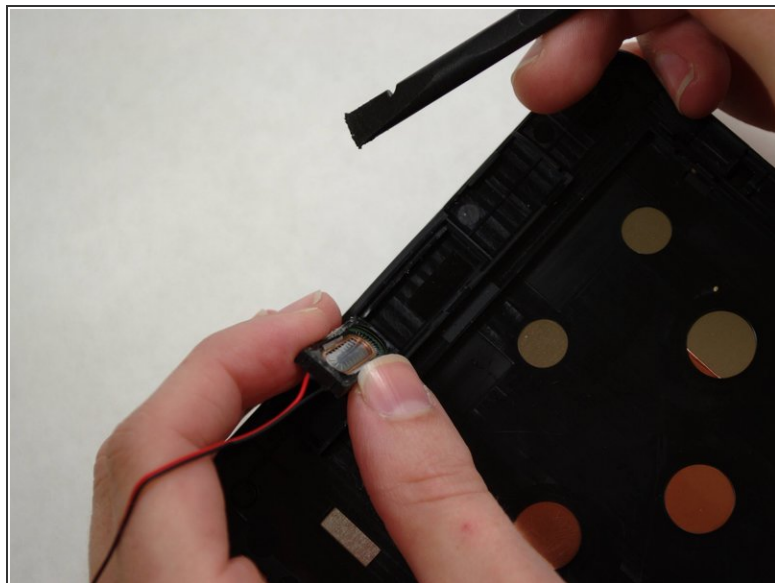
## Step 6 — Screen



 The audio module must be removed to replace the screen.

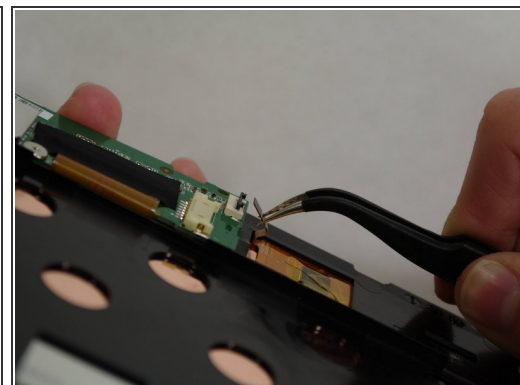
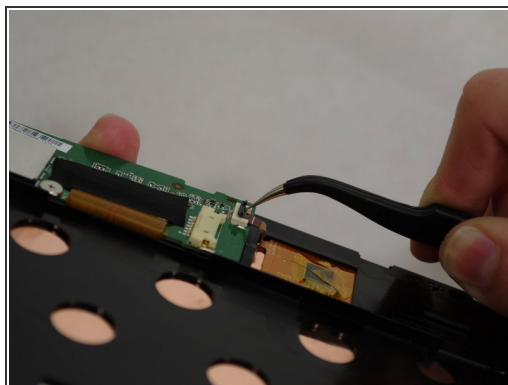
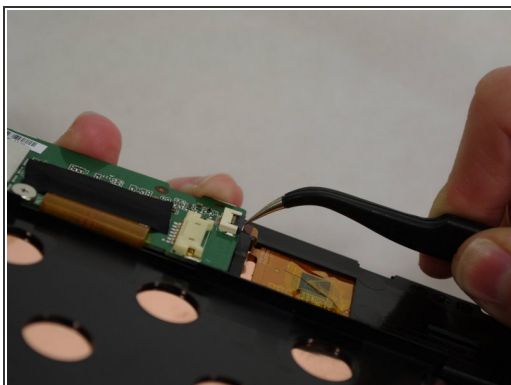
- Using needle-nose tweezers, carefully push the small white wire connector (red/black wires) out of its housing.
- Gently remove red/black wire strands from the clips holding them to the back of the screen.

## Step 7



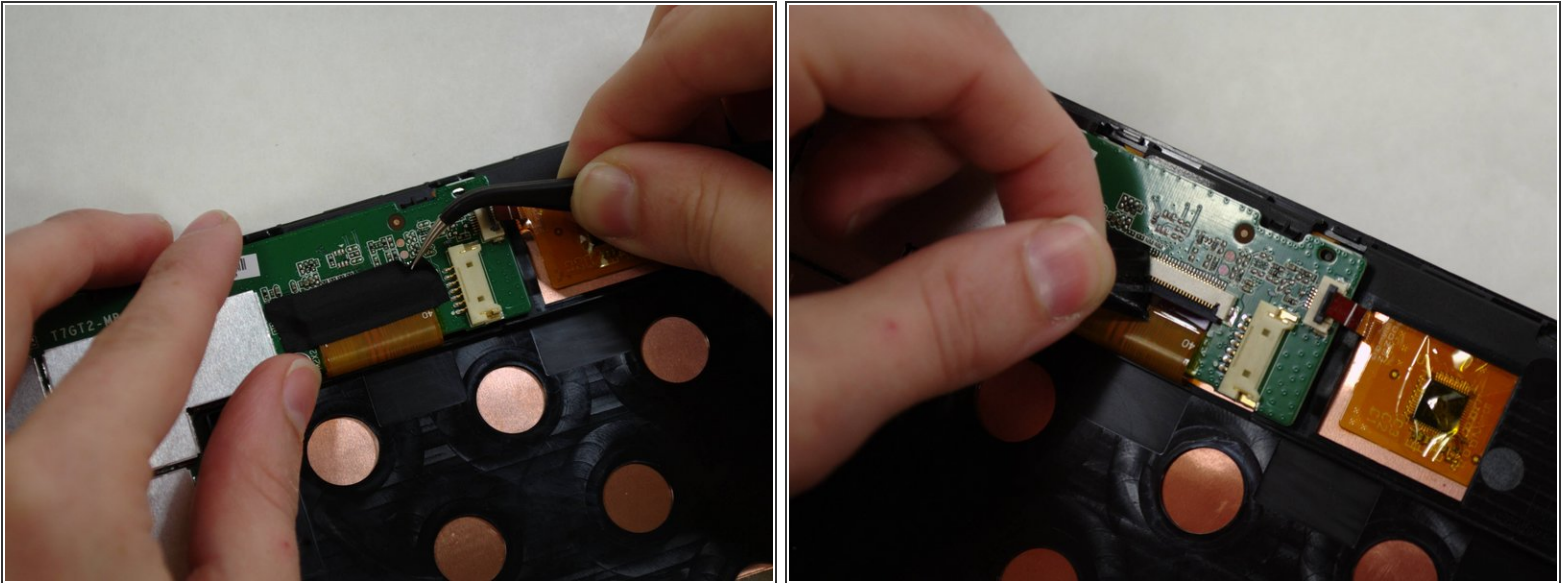
- Gently pry audio module from the back of the screen using tweezers and spudger. **Be careful not to pull on the wires.**
- ❗ **Adhesive on the bottom of the speaker module may make it difficult to remove.**
- Set the audio module and attached wire aside.

## Step 8



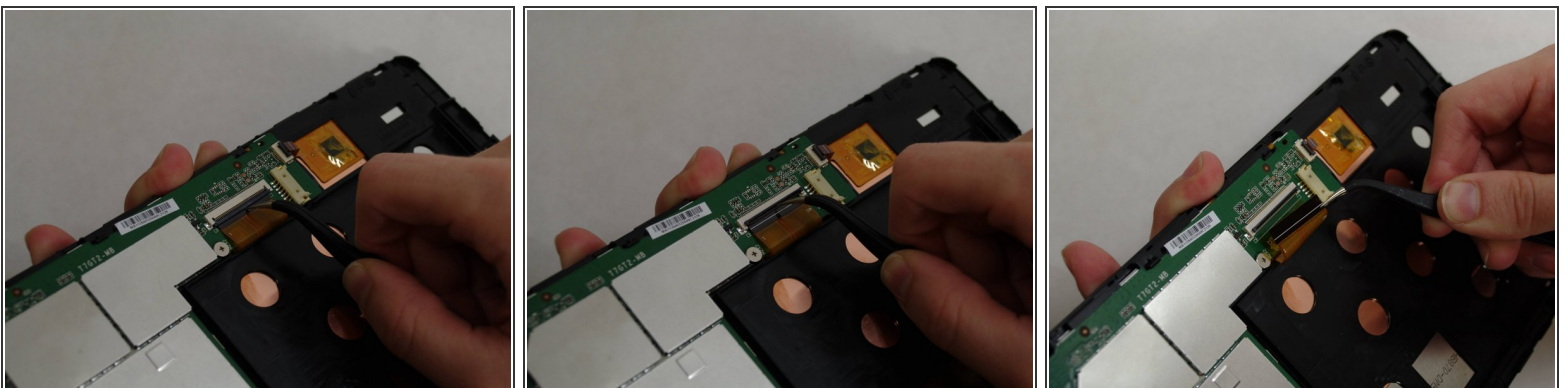
- Using needle-nose tweezers, **carefully** flip up the dark gray cover on the right of the device holding the **small** orange/gold ribbon in place. (It is approximately 1/4" wide.)
- With the tweezers, **carefully** pull the small ribbon out of its housing. It will stay attached to the device at the other end.

## Step 9



- A wide orange/gold ribbon connects the screen to the motherboard. (Ribbon is approximately 1" wide.)
- Carefully pull the black tape off the ribbon housing and set it aside. You will need to replace the tape when reassembling the device.

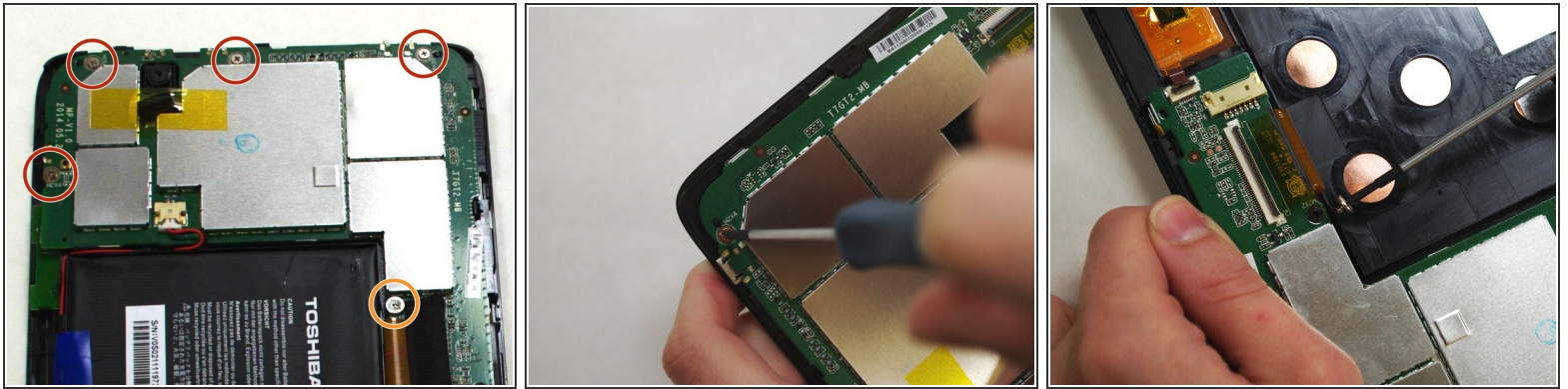
## Step 10



**⚠ Damaging this ribbon will permanently disable your device!**

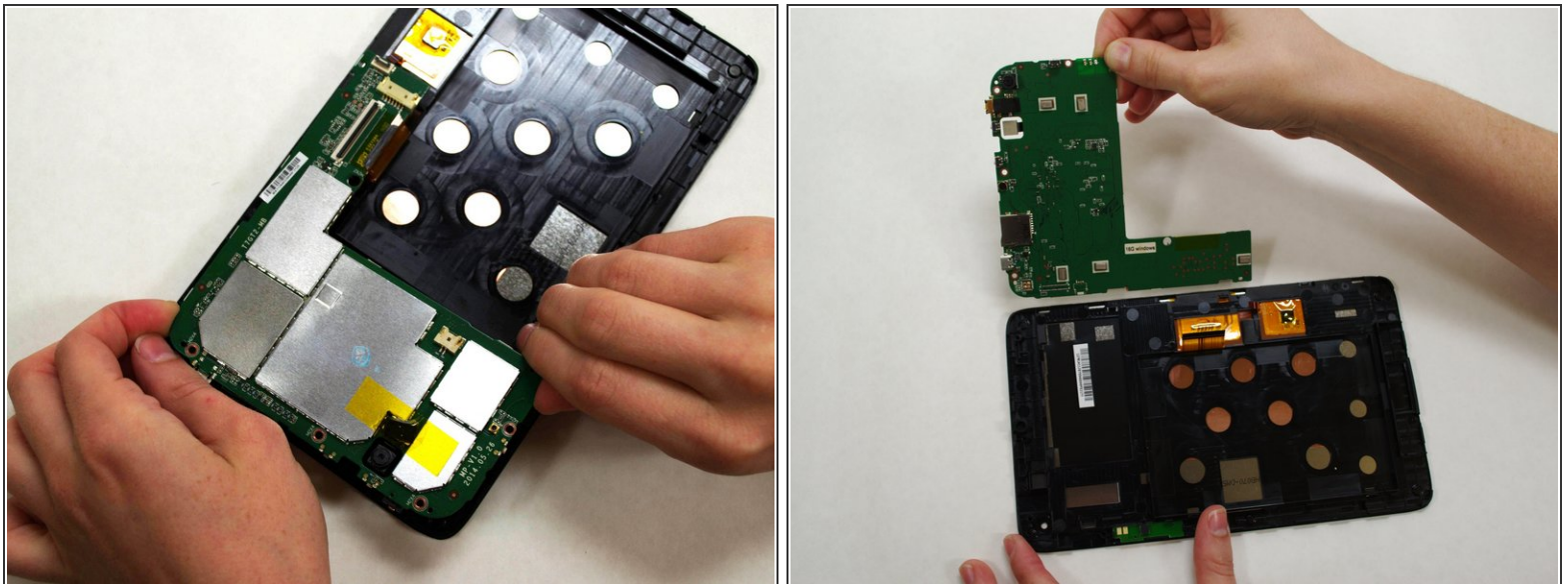
- Using needle-nose tweezers, **carefully** flip up the dark gray cover.
- With the tweezers, **carefully** pull the wide ribbon from its housing. It will stay attached to the device at the other end.

## Step 11



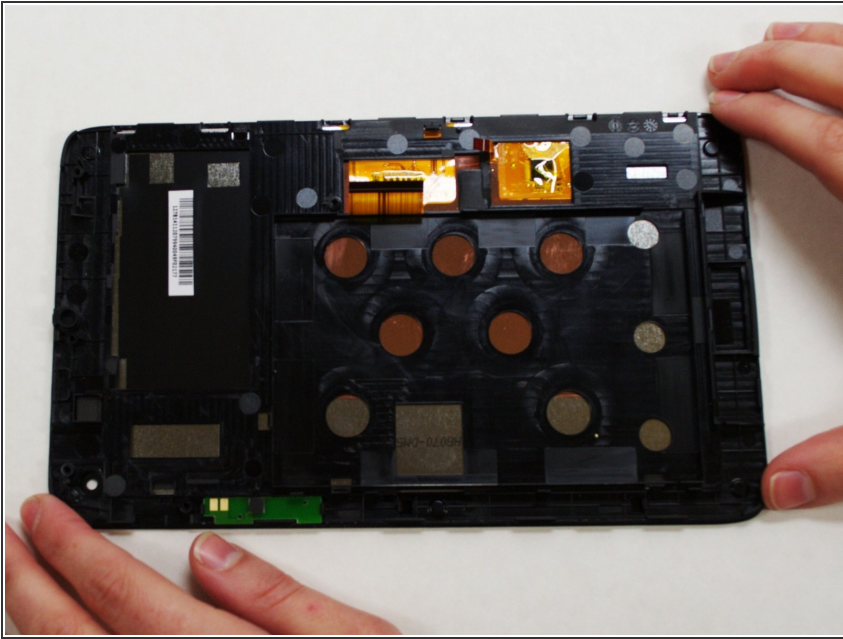
- Using a Phillips 000 screwdriver, remove the screws holding components together.
  - Remove *four* 4.2 mm Phillips screws
  - Remove *one* 3 mm Phillips screw

## Step 12



- Holding the motherboard **carefully** by the edges, gently lift it up off the screen and **carefully** set it aside.
- ⓘ The motherboard may resist as you try to lift it --this is normal.

## Step 13



- ⓘ Now that your screen is detached from the rest of the device components, it is ready to be replaced.

To reassemble your device, follow these instructions in reverse order.