



# Toshiba Encore WT8-A Screen Replacement

This Guide will Show you how to replace the screen on your Toshiba Encore WT8 tablet

Written By: Zach Cossey



## INTRODUCTION

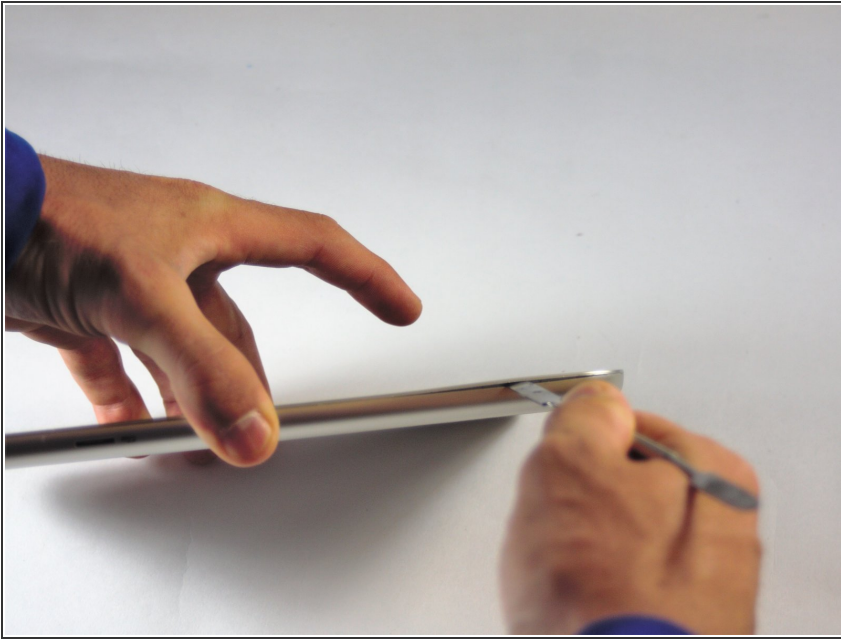
After removing the battery and motherboard, you must disassemble the bottom end of the tablet in order to gain access and disconnect the screen.

---

### TOOLS:

- [Phillips #0 Screwdriver](#) (1)
  - [Metal Spudger](#) (1)
  - [iFixit Opening Tools](#) (1)
  - [Tweezers](#) (1)
-

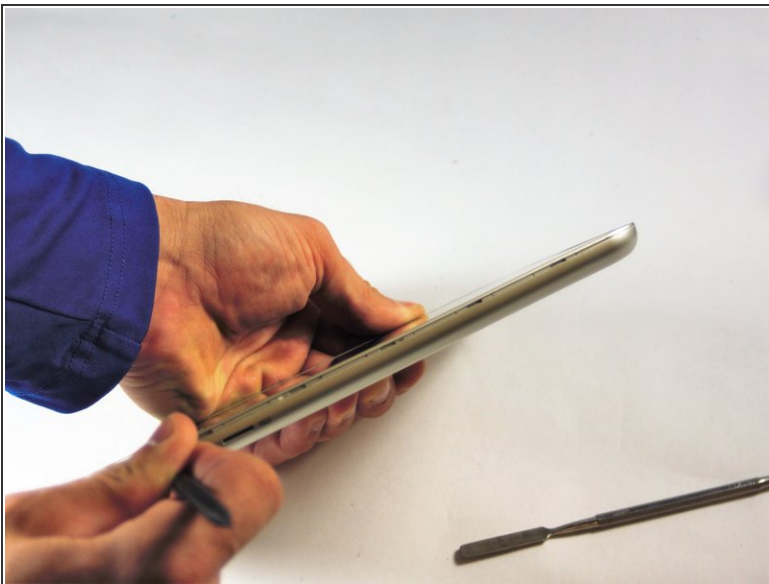
## Step 1 — Battery



- Use the metal spudger to create a gap between the back cover and the device.

⚠ Be gentle when using the metal spudger so that the casing is not damaged.

## Step 2



- Use the nylon spudger to completely separate the back of the device.
- Take the nylon spudger around the outside of the device cover until it comes free.

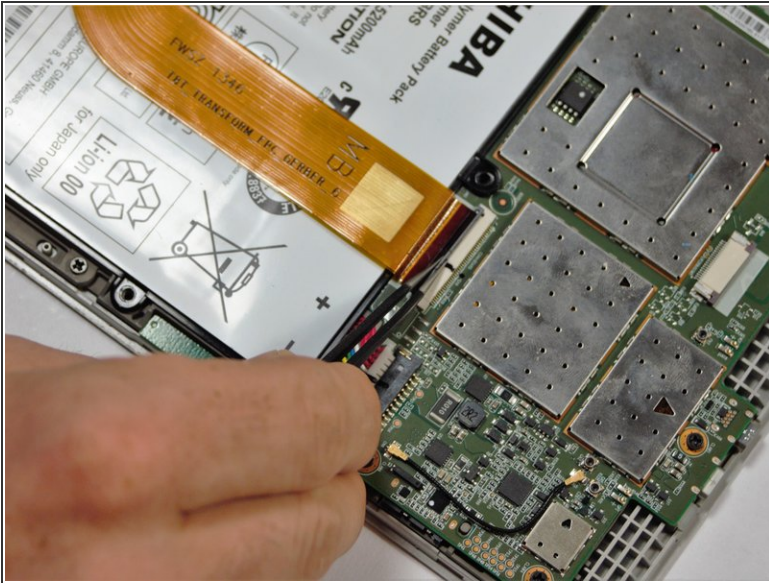


## Step 3



- Use the Phillips head PH0 to remove the 7 battery screws.
- The 5 side screws measure 3.5mm.
- The 2 top and bottom screws measure 4.5 mm.

## Step 4



- To disconnect the cable, use the fine tweezers to flip up the small retaining flap. Then, you can safely pull the ribbon cable out.
- ⚠ Be sure you are prying up on the hinged retaining flap, not the connector itself.
- ℹ The zero insertion force (ZIF) connector is used to secure delicate ribbon cables, such as this trackpad cable.

## Step 5



- Remove the colored power cable from its connector.
- To disconnect it safely, use the pointed tip of a spudger to carefully push on each side of the connector.
- Alternating from one side to the other, gently “walk” the connector out of its socket.
- ⚠ Be sure to be very gentle when prying colored wires from motherboard to ensure that there is no damage.

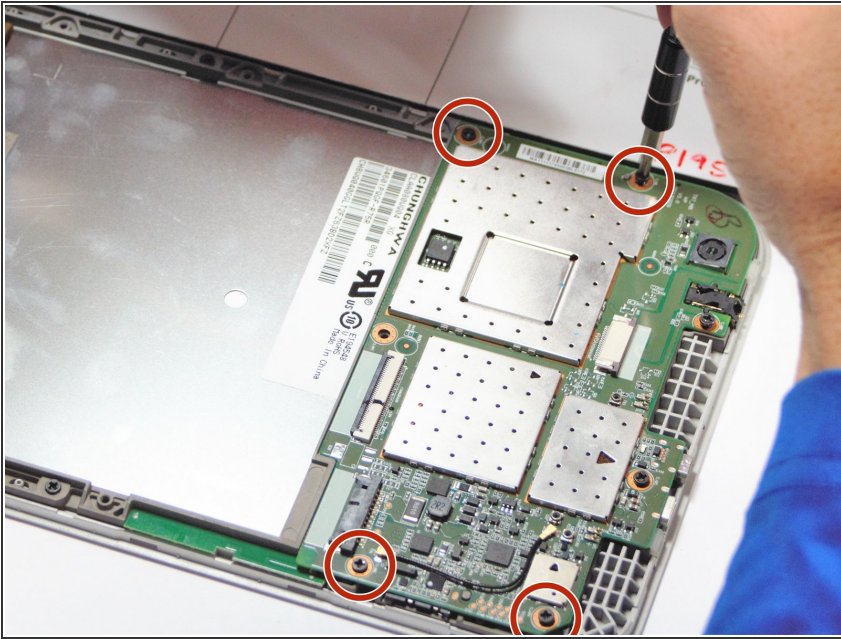
## Step 6



- Battery will lift out of the device.

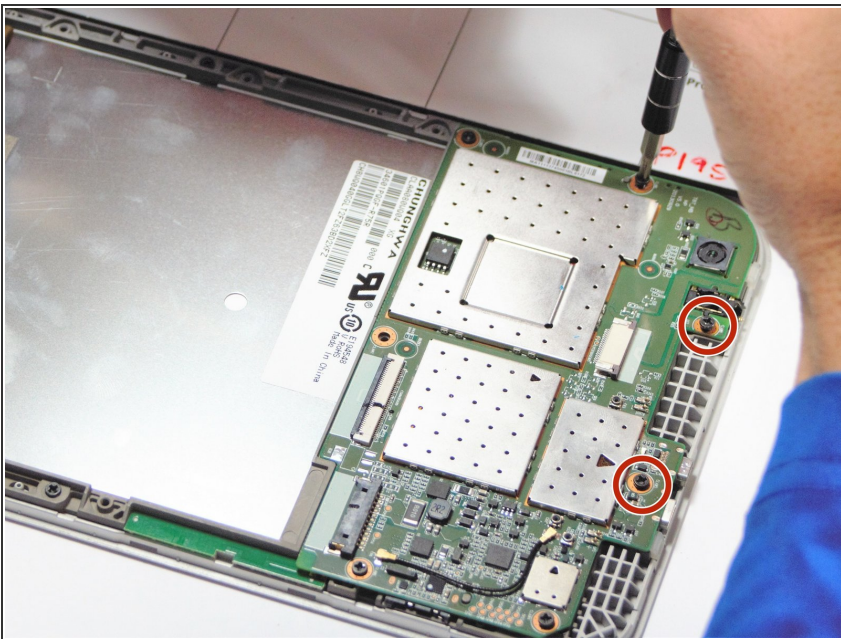


## Step 7 — Motherboard



- Remove the 4 – 4.5 mm screws from the motherboard assembly.

## Step 8



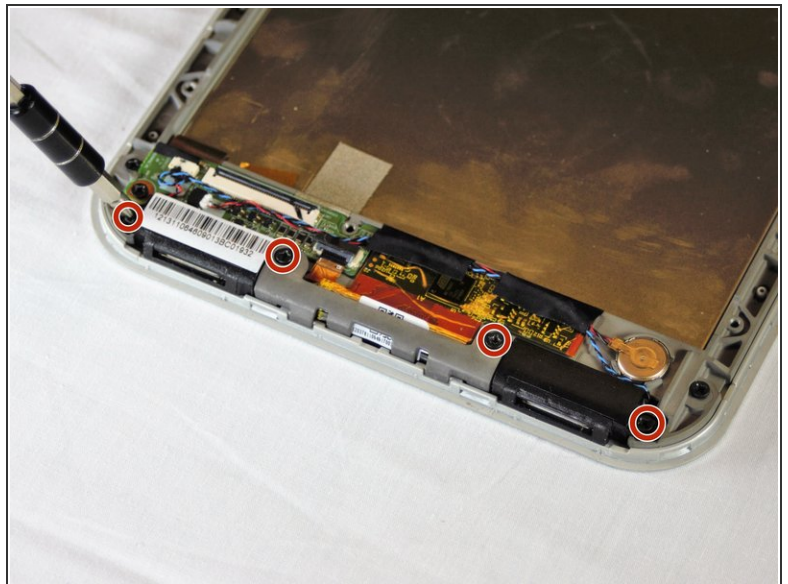
- Remove the 2 – 3.5 mm screws from the motherboard assembly.

## Step 9



- The motherboard should come free at this point.

## Step 10 — LCD Screen



- Use the screwdriver to remove the 4-3.5mm screws on the two lower speakers.

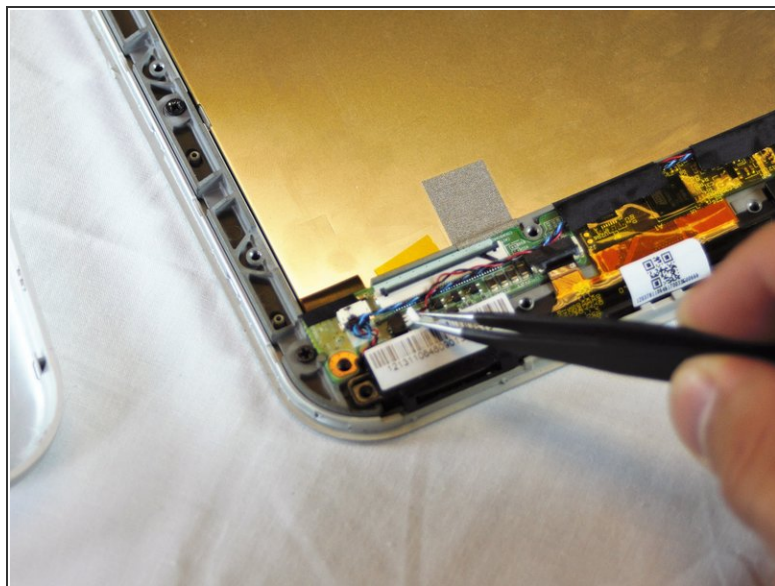
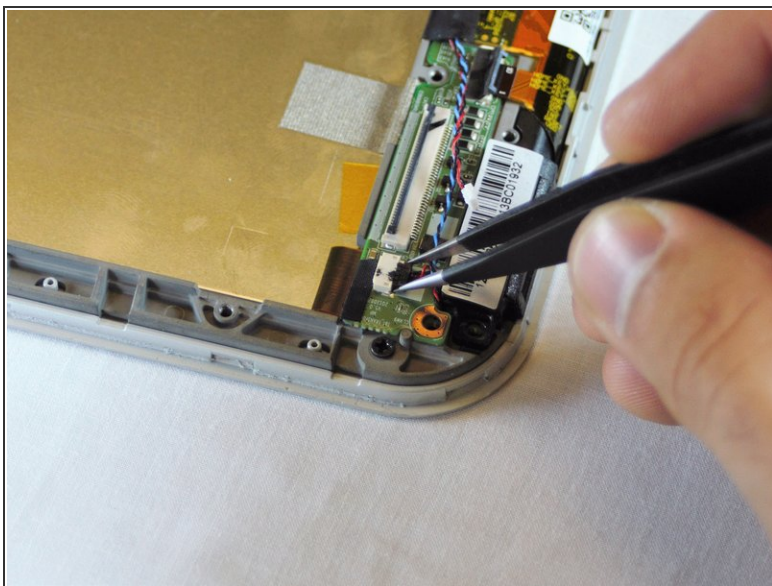


## Step 11



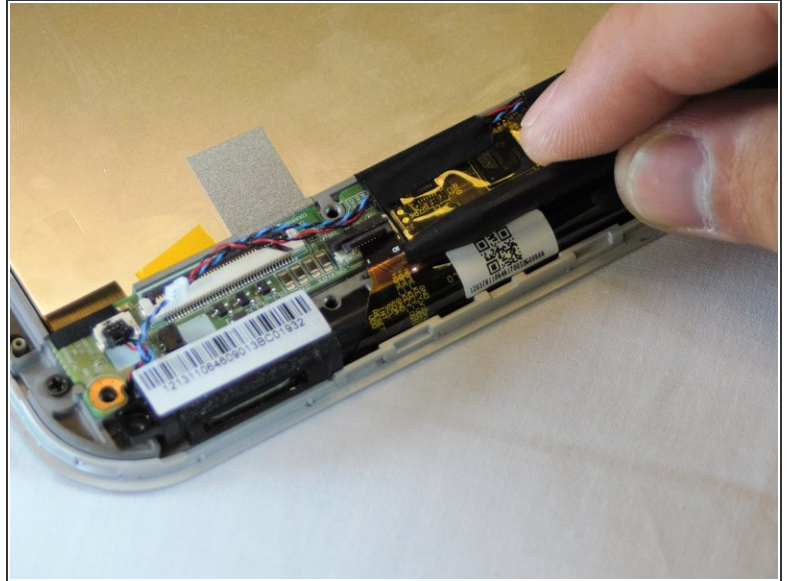
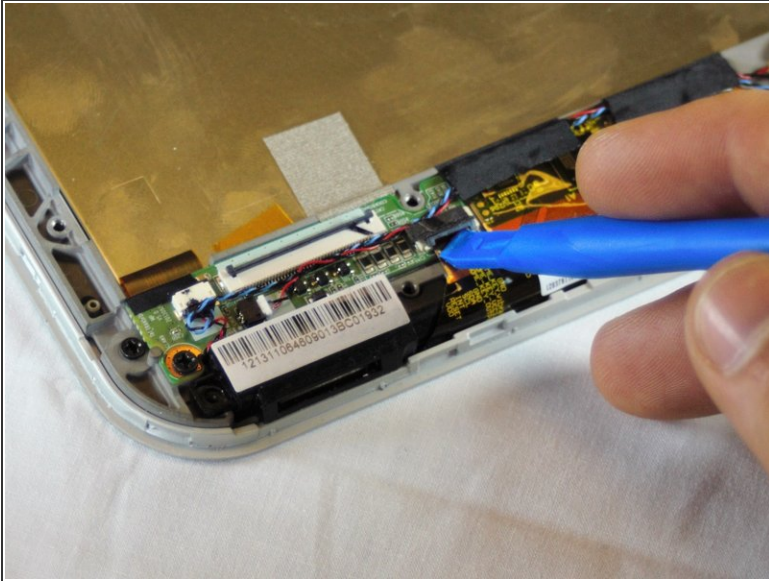
- Using the spudger, gently pry up on the reinforcement bar and remove from the frame.

## Step 12



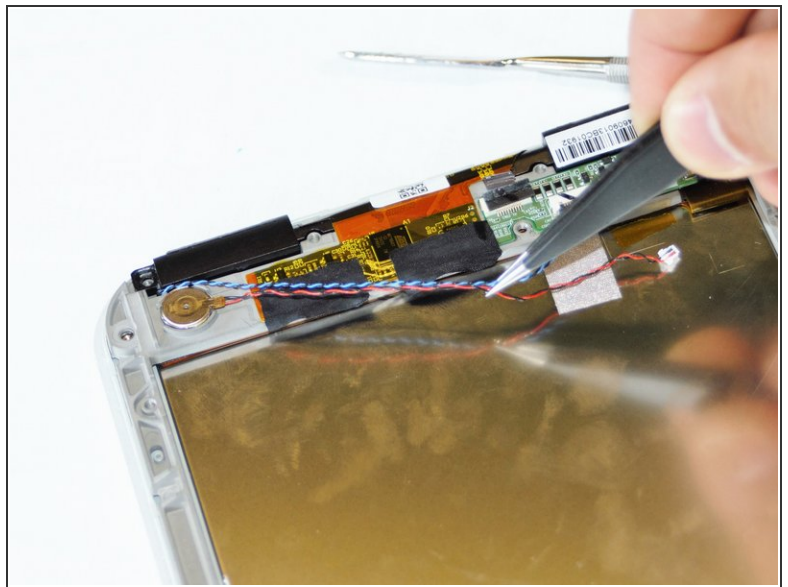
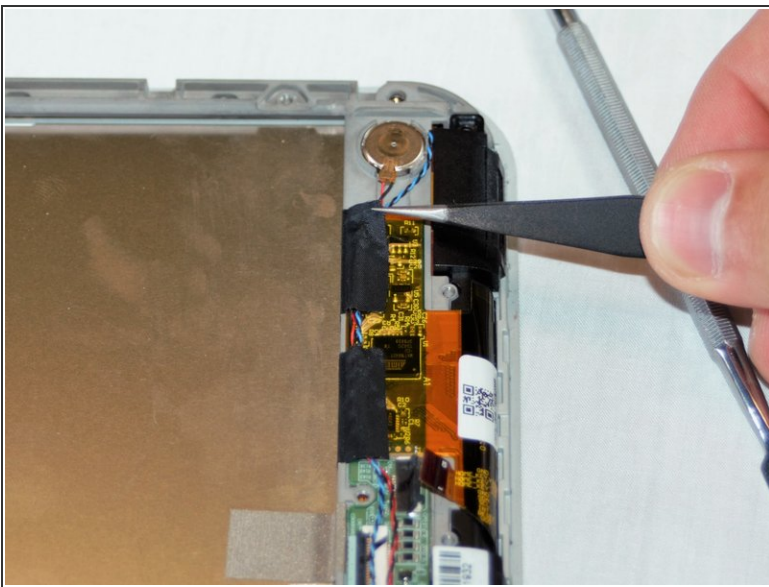
- Use the fine pointed tweezers to carefully remove the 2 no-fuss speaker connections.

## Step 13



- Lift the black ZIF connector holding down the ribbon cable with the plastic opening tool.
- Gently use the spudger to remove the ribbon cable.

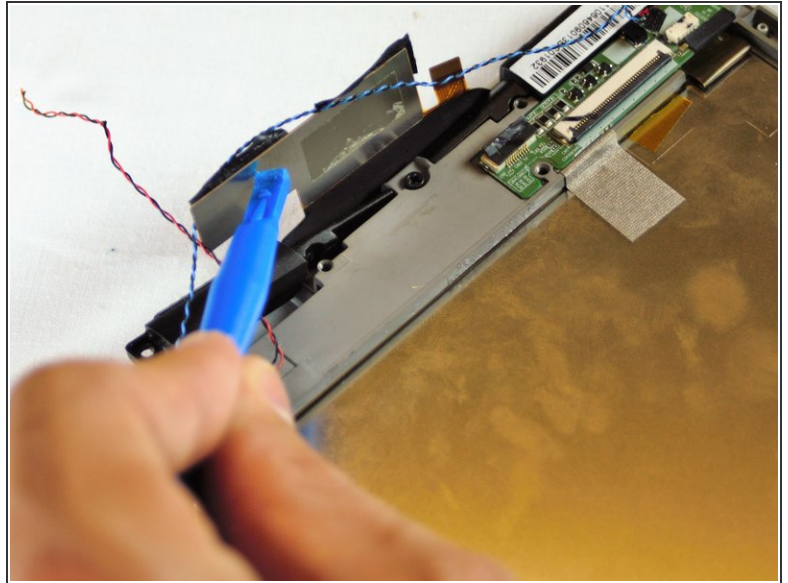
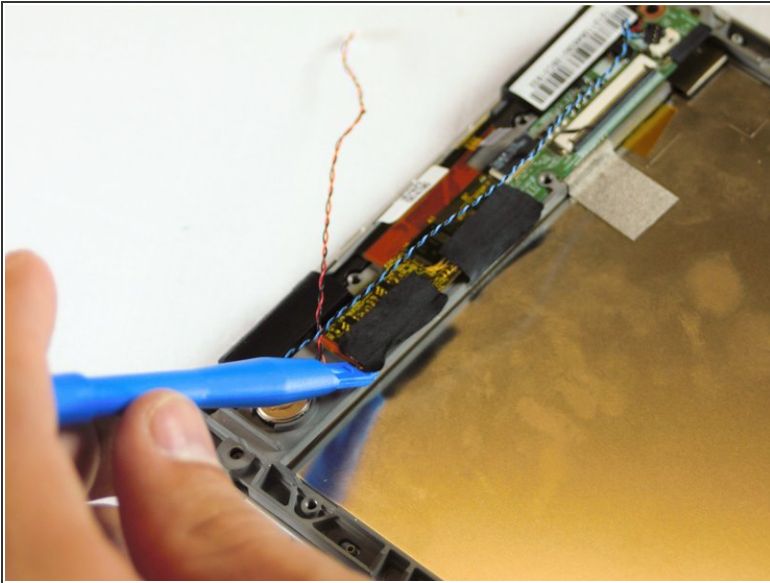
## Step 14



- Use the fine pointed tweezers to pull the 2 pieces of fabric tape from the lower board.
- Move the speaker wires out of the way.



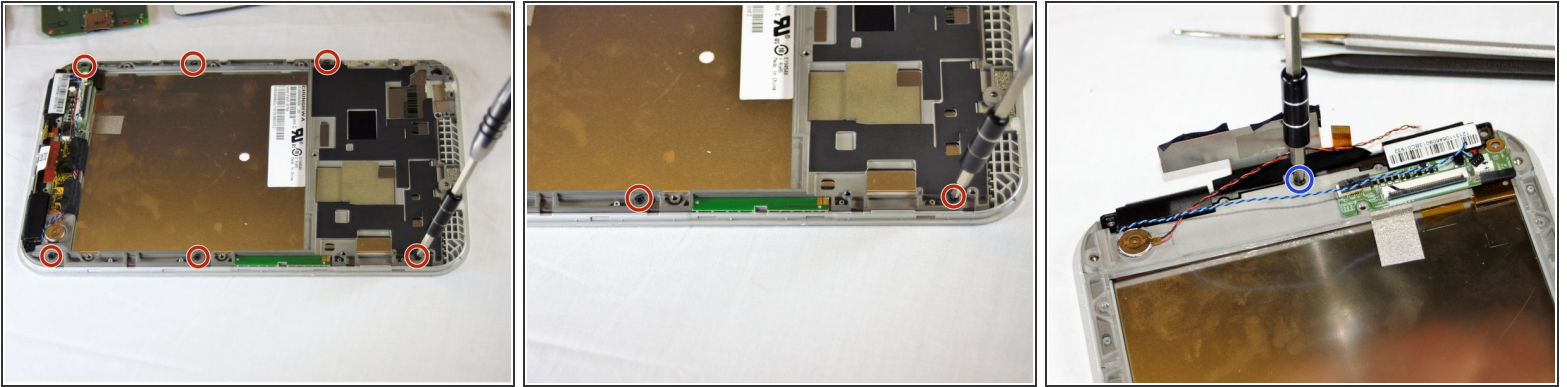
## Step 15



- Use the plastic opening tool or spudger to gently lift up on the middle logic board and remove it from the frame.
- This board controls the touch sensors on the front glass.
- ⓘ This may require some extra force to loosen up the glue under the board. Make sure to apply force evenly around the edges.
- ⚠ The Touch control board has fragile ribbon cables. Make sure to not twist or rip these cables while separating it from the frame and working around the board.



## Step 16



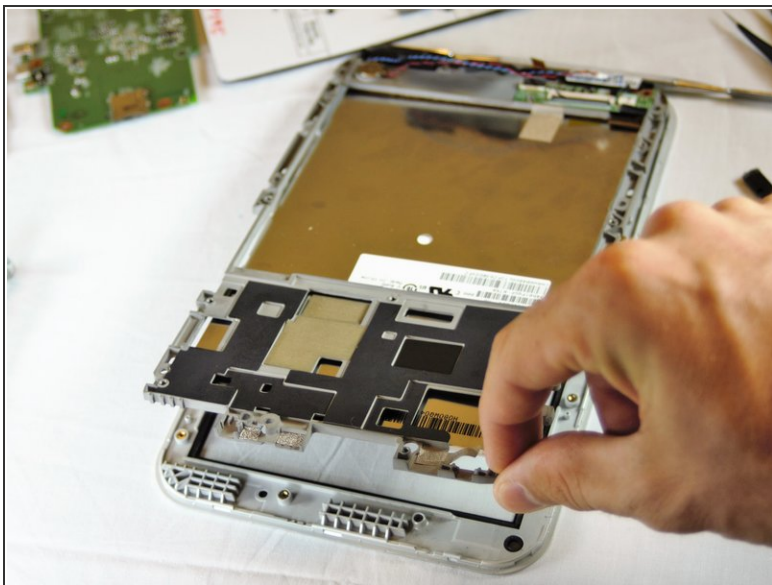
- There are now 7-3.5mm Phillips head screws holding the frame to the front glass of the tablet.
- Use the Phillips head screwdriver to remove the 7 screws.
- ⓘ The 7th screw is under the touch control board in the bottom middle that we just pried up.

## Step 17



- Use the spudger to pry your way around the frame and separate it from the front glass.
- ⚠ Be gentle when prying. There are fragile plastic clips and parts that could easily snap with too much pressure.

## Step 18



- When the frame is separated and loose, Lift from the top and pull the frame off the front glass, setting the glass aside.

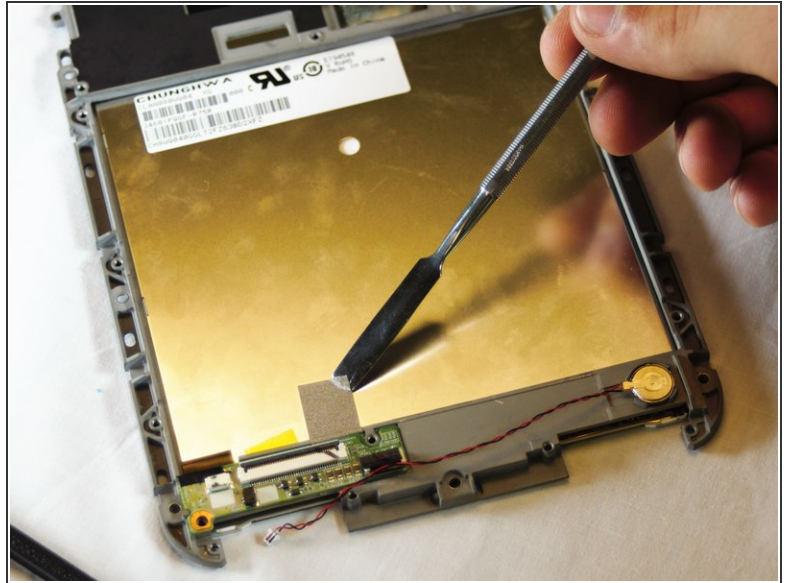
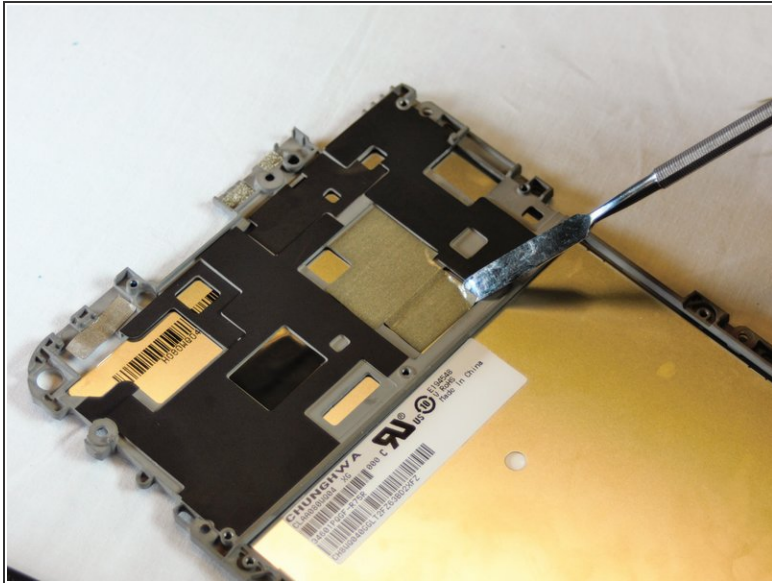
## Step 19



- Remove the lower speakers and set them aside.



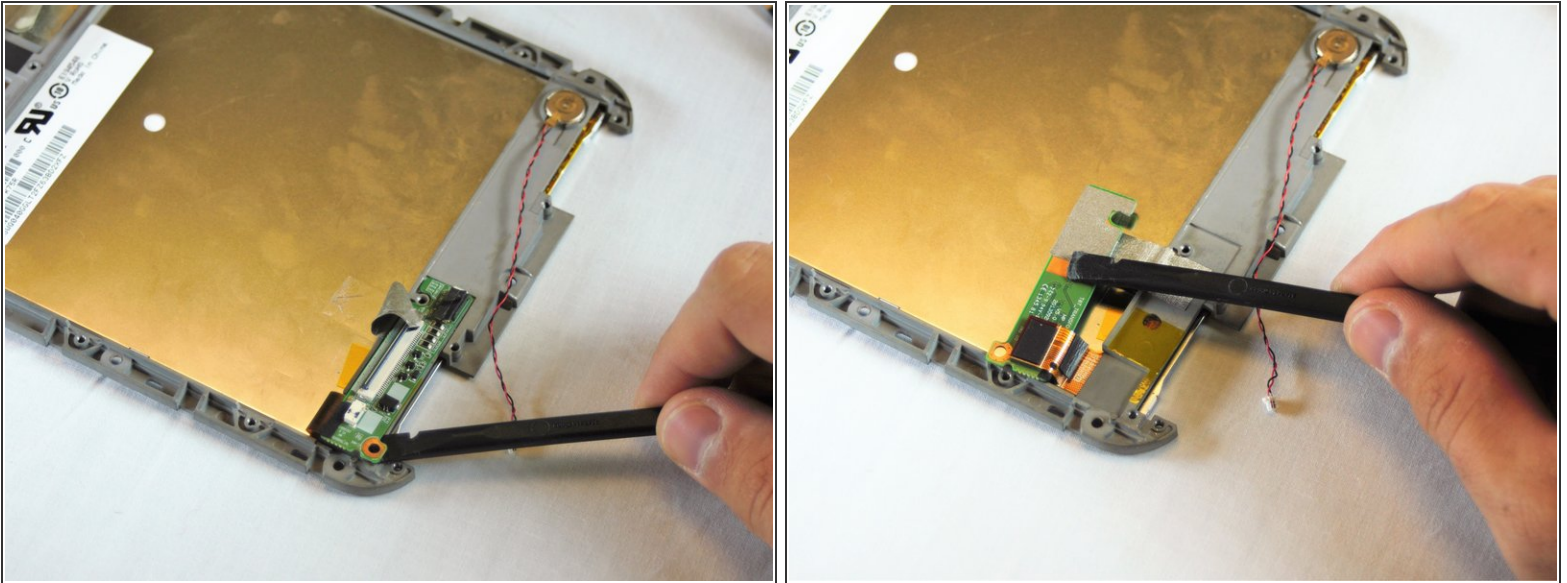
## Step 20



- The screen is held to the frame with metal fabric tape at the top and bottom of the frame.
- Use the metal spudger to peel the tape off the back of the screen.

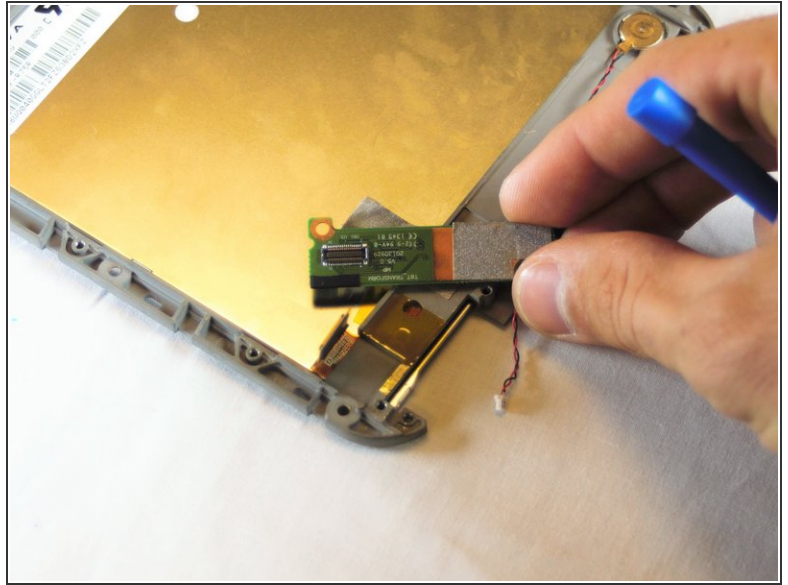
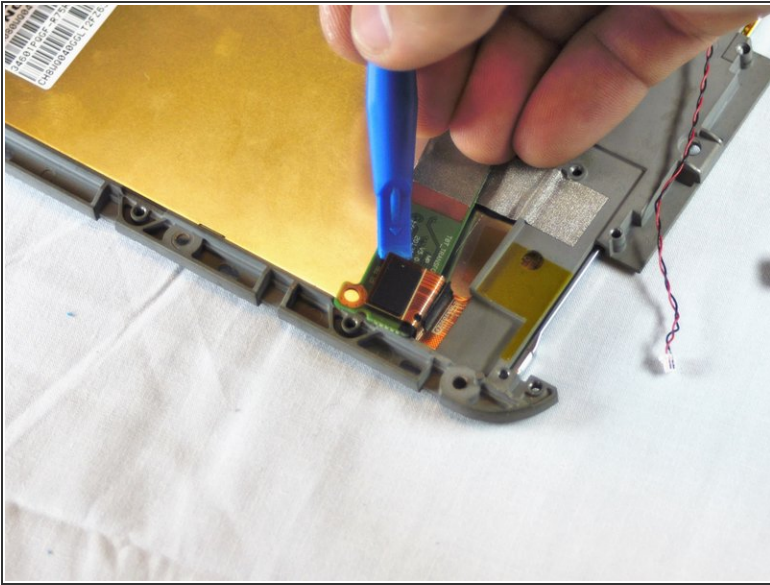


## Step 21



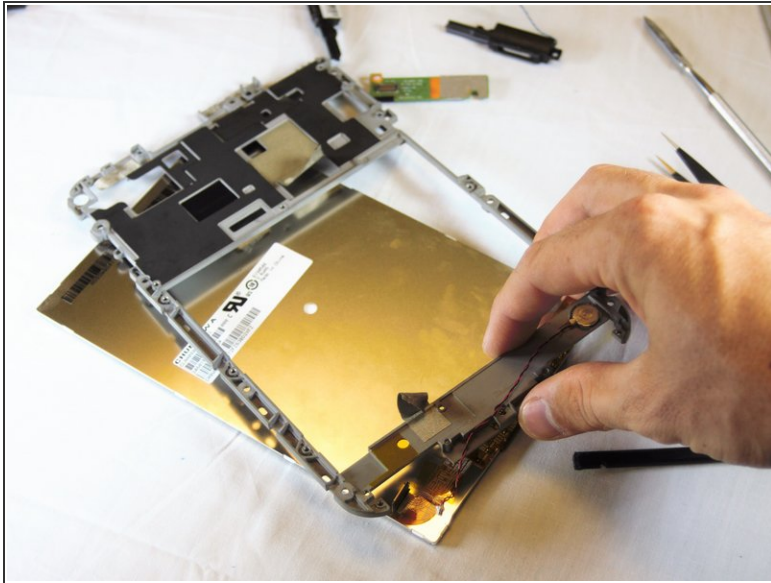
- The last board we have to worry about is the board that holds the ribbon cable connector (from the battery removal step) and the screen connector.
- Use the spudger to gently pry up on the bottom side of the board, as you did when removing the touch screen control board.
- You have to make sure to loosen up the glue underneath and the board should come free from the frame.

## Step 22



- Use the plastic opening tool to disconnect the screens ribbon cable from the board by prying up on the flat topped connector.
- The board will come free and you can set it aside.

## Step 23



- With the tape peeled back, and the board disconnected and removed, you can take the frame off of the back of the screen.
- Your screen is now ready to be replaced with a new one.

To reassemble your device, follow these instructions in reverse order.