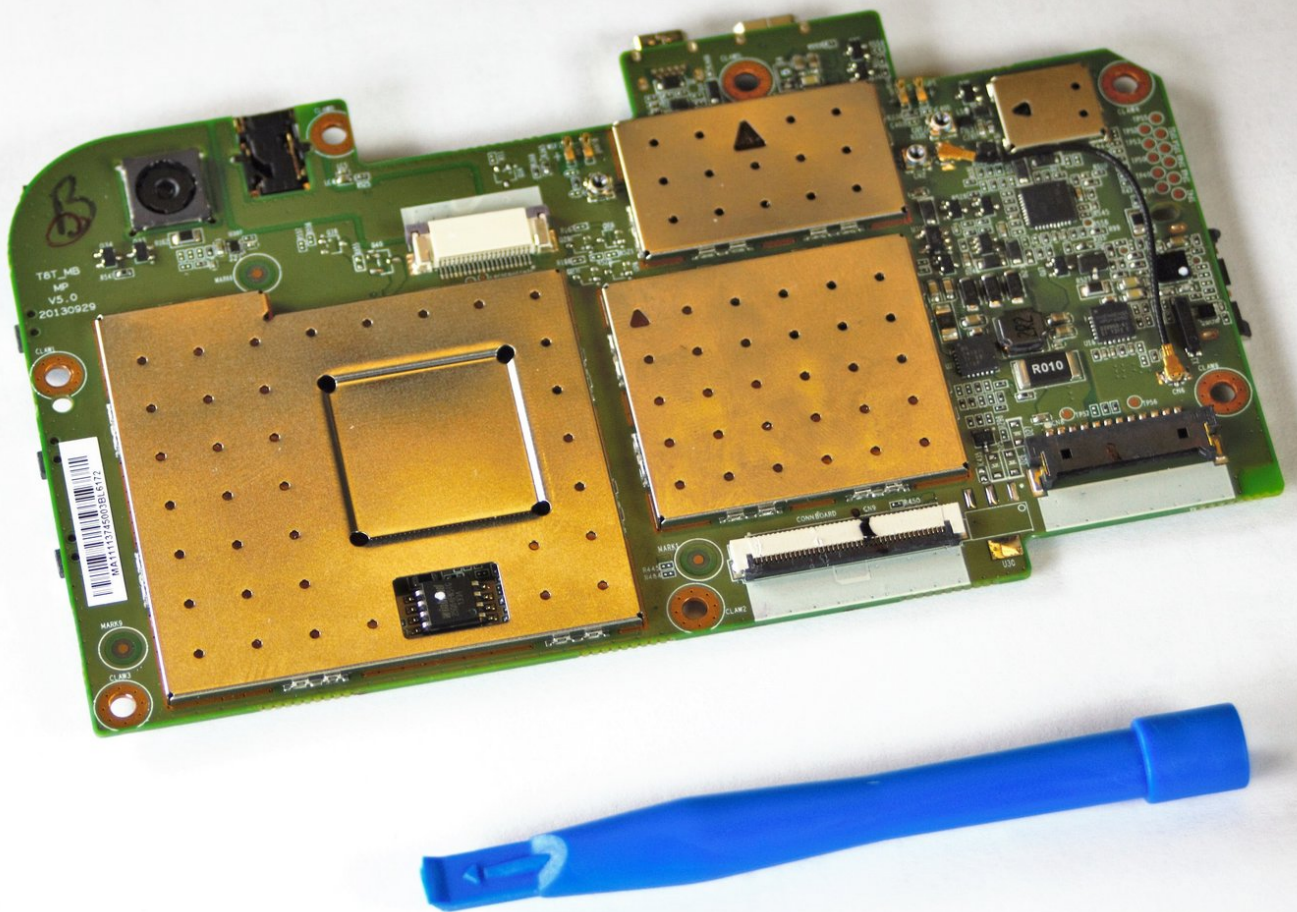




Toshiba Encore WT8-A Tablet Camera Replacement

This guide is intended to show tablet owners how they can take their device apart in order to replace the camera.

Written By: Melanie Mestre

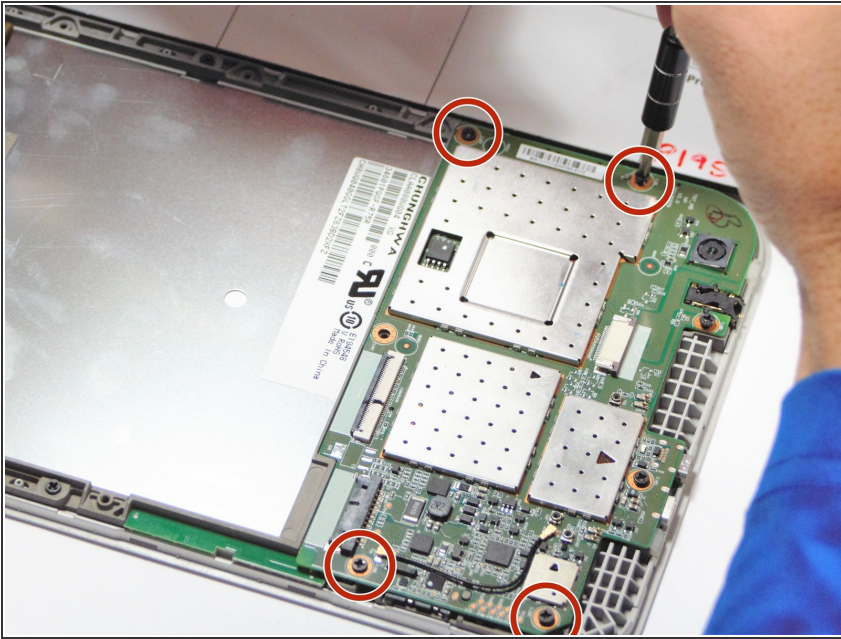




TOOLS:

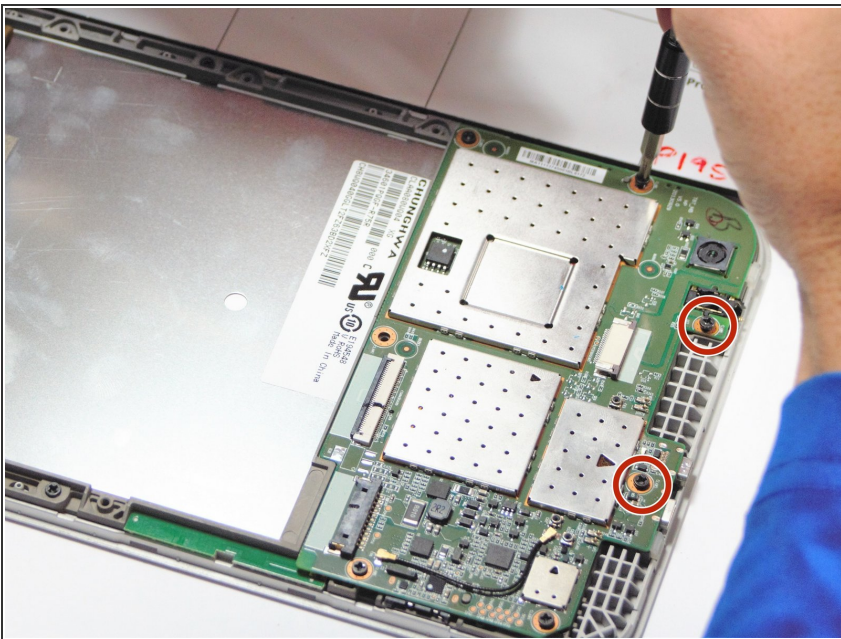
- [Metal Spudger](#) (1)
 - [iFixit Opening Tools](#) (1)
 - [Tweezers](#) (1)
 - [Phillips #0 Screwdriver](#) (1)
-

Step 1 — Motherboard



- Remove the 4 – 4.5 mm screws from the motherboard assembly.

Step 2



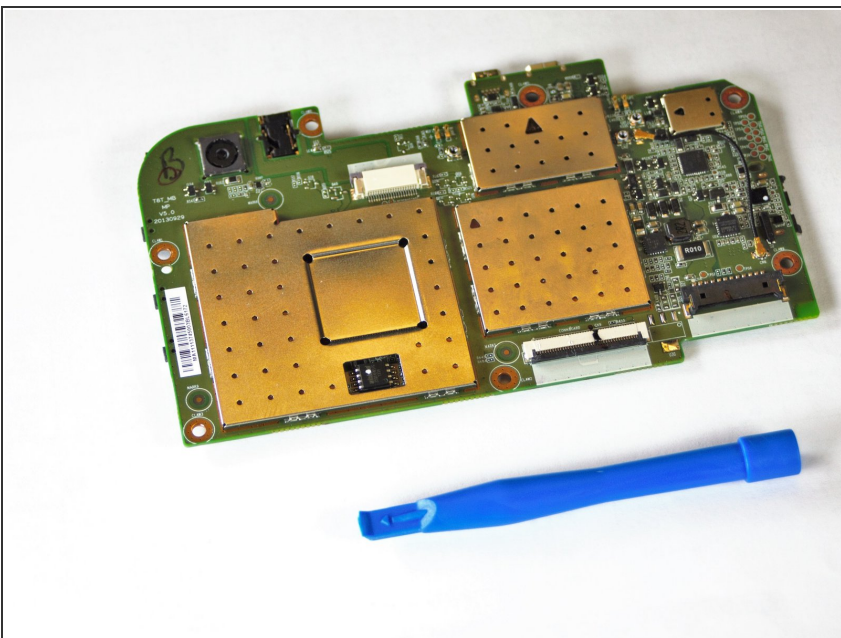
- Remove the 2 – 3.5 mm screws from the motherboard assembly.

Step 3



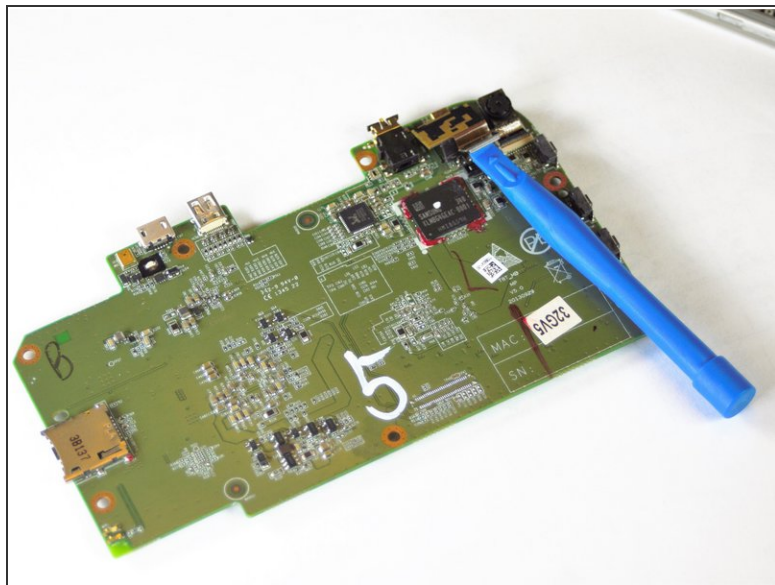
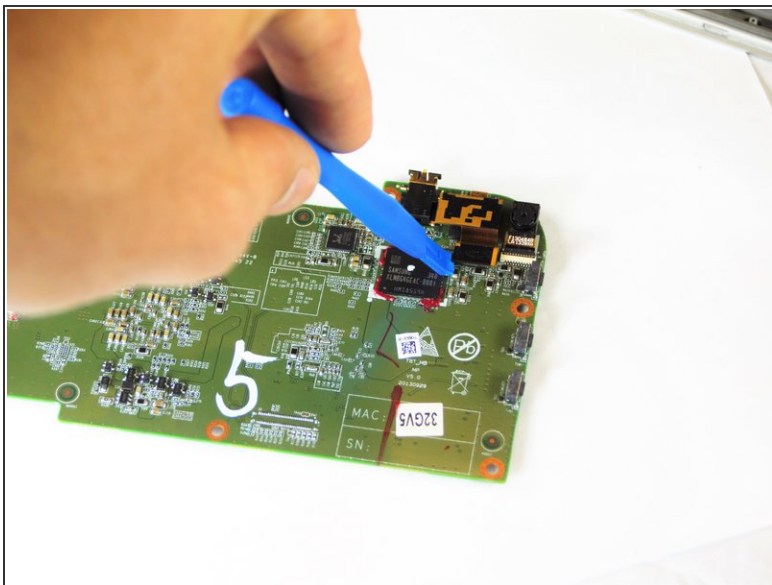
- The motherboard should come free at this point.

Step 4 — Camera



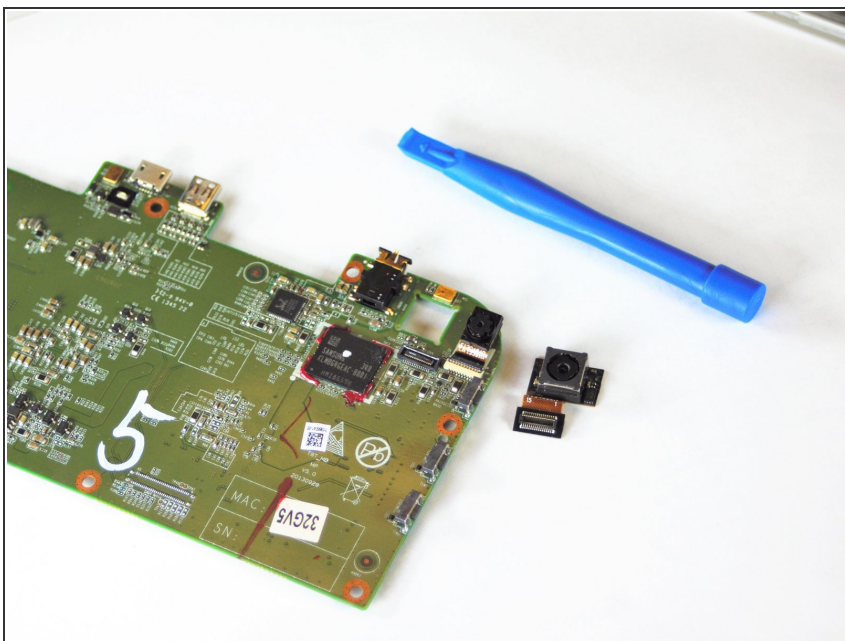
- Use small plastic opening tool for the following steps.

Step 5



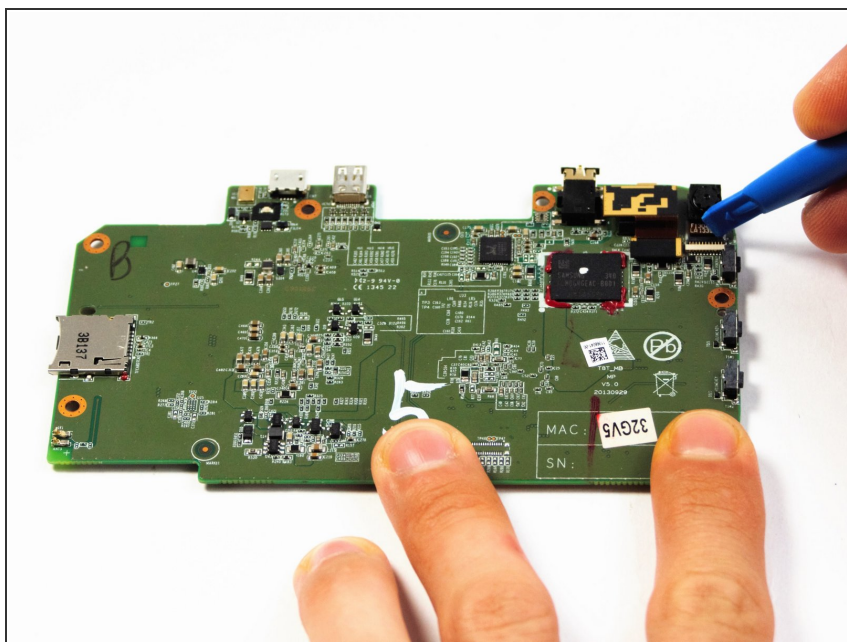
- Use small plastic opening tool to pry rear facing camera flat top connector from motherboard.

Step 6



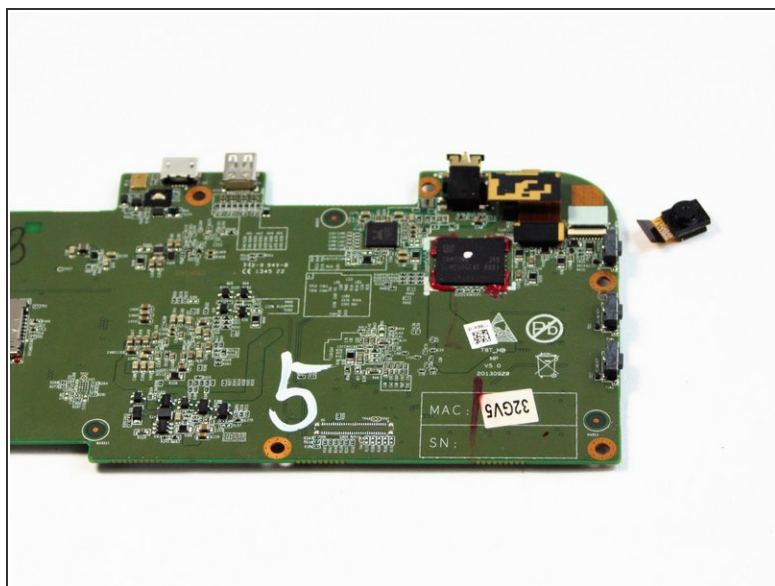
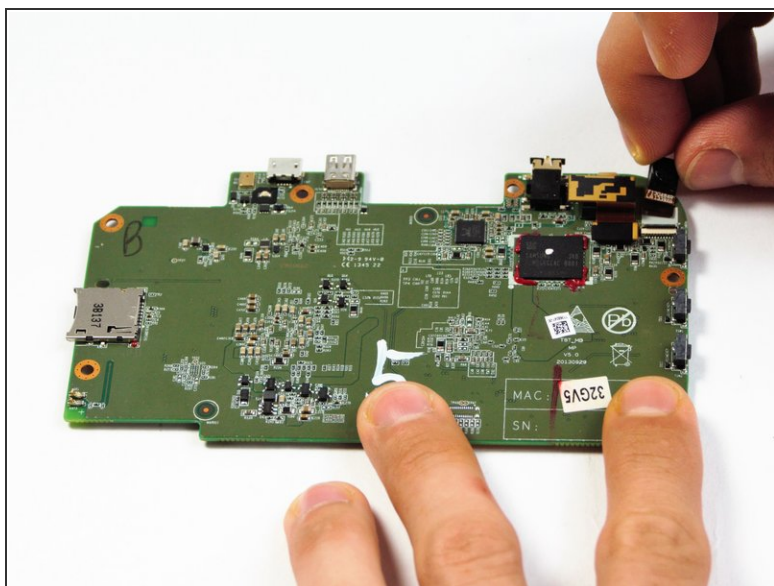
- The rear facing camera should come free at this point.

Step 7



- Use small plastic opening tool to pry front facing camera flat top connector from the motherboard

Step 8



- The front facing camera should come free at this point.

To reassemble your device, follow these instructions in reverse order.