



# Toshiba Encore WT8-A Tablet Motherboard Replacement

This guide shows how to replace the motherboard of a Toshiba Encore WT8-A Tablet.

Written By: Zachary Armstrong



## INTRODUCTION

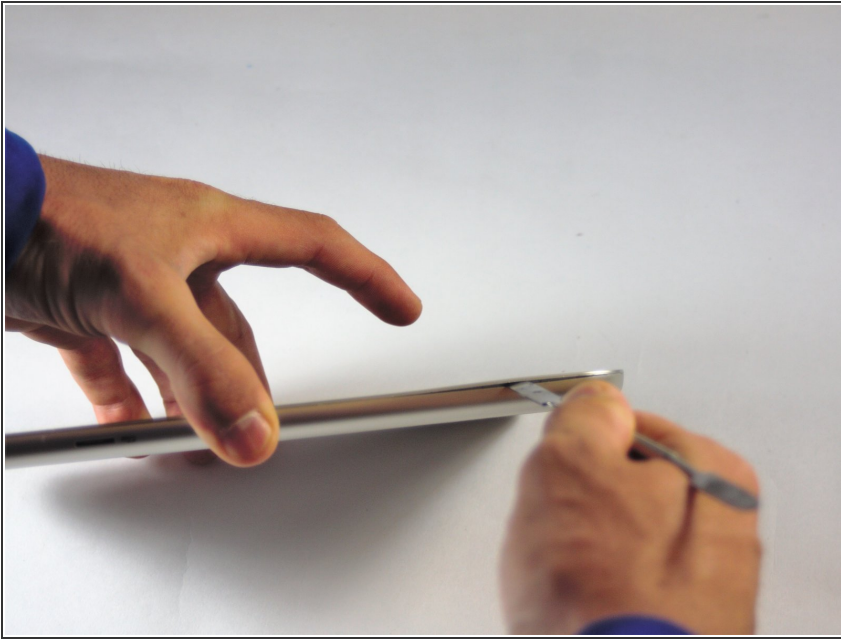
This guide is intended to show tablet owners how they can take their device apart in order to replace the motherboard.

---

### TOOLS:

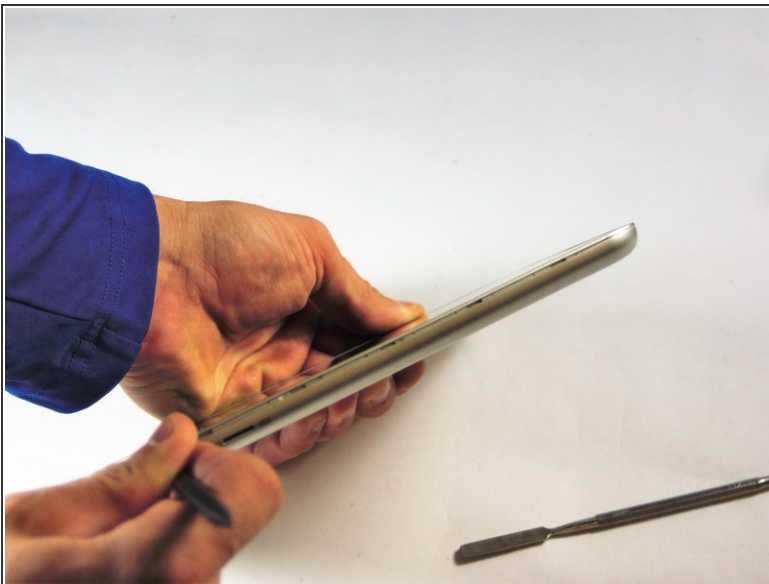
- [Phillips #0 Screwdriver](#) (1)
  - [Metal Spudger](#) (1)
  - [iFixit Opening Tools](#) (1)
  - [Tweezers](#) (1)
-

## Step 1 — Battery



- Use the metal spudger to create a gap between the back cover and the device.
- ⚠ Be gentle when using the metal spudger so that the casing is not damaged.

## Step 2



- Use the nylon spudger to completely separate the back of the device.
- Take the nylon spudger around the outside of the device cover until it comes free.

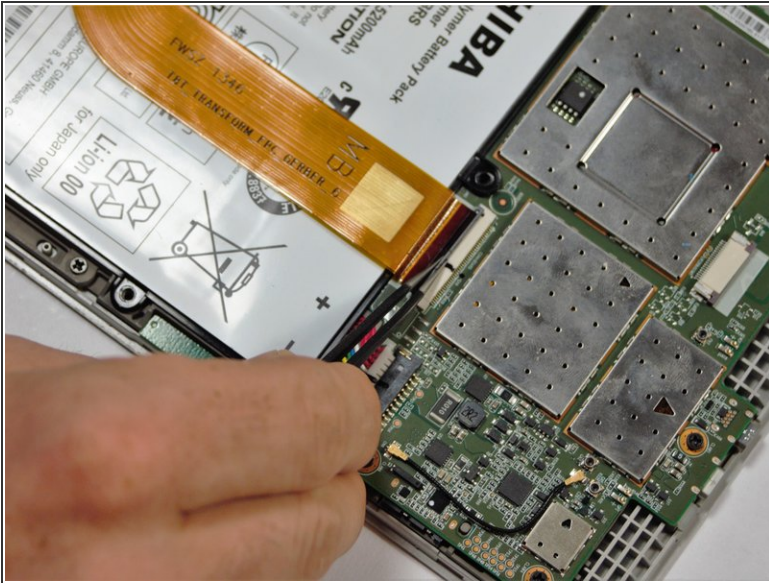
## Step 3



- Use the Phillips head PH0 to remove the 7 battery screws.
- The 5 side screws measure 3.5mm.
- The 2 top and bottom screws measure 4.5 mm.



## Step 4



- To disconnect the cable, use the fine tweezers to flip up the small retaining flap. Then, you can safely pull the ribbon cable out.

⚠ Be sure you are prying up on the hinged retaining flap, not the connector itself.

ⓘ The zero insertion force (ZIF) connector is used to secure delicate ribbon cables, such as this trackpad cable.

## Step 5



- Remove the colored power cable from its connector.
  - To disconnect it safely, use the pointed tip of a spudger to carefully push on each side of the connector.
  - Alternating from one side to the other, gently “walk” the connector out of its socket.
- ⚠ Be sure to be very gentle when prying colored wires from motherboard to ensure that there is no damage.

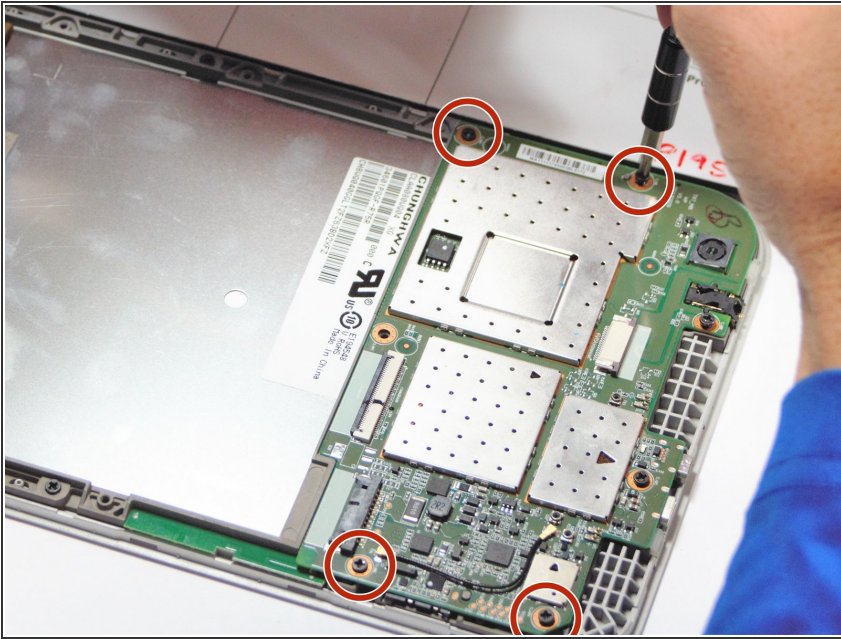
## Step 6



- Battery will lift out of the device.

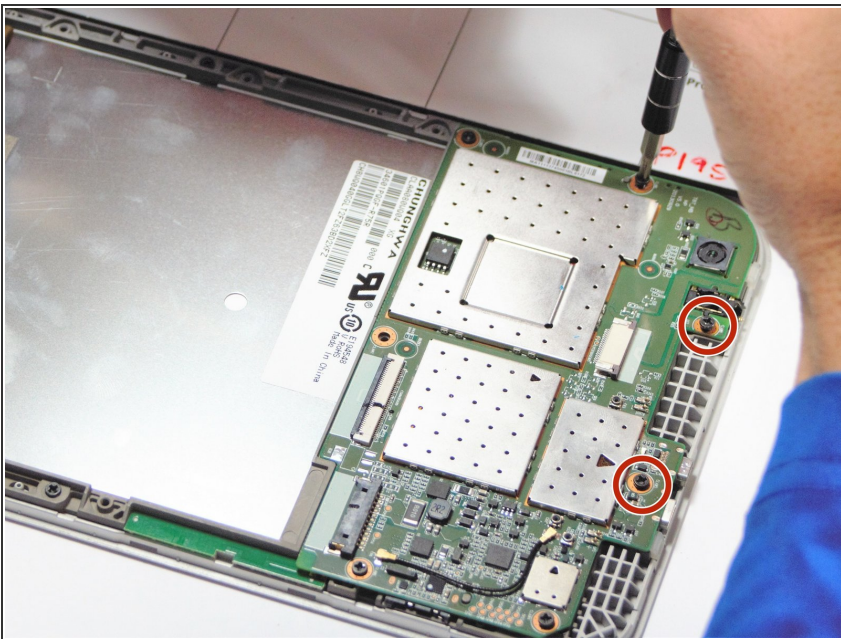


## Step 7 — Motherboard



- Remove the 4 – 4.5 mm screws from the motherboard assembly.

## Step 8



- Remove the 2 – 3.5 mm screws from the motherboard assembly.

## Step 9



- The motherboard should come free at this point.

To reassemble your device, follow these instructions in reverse order.