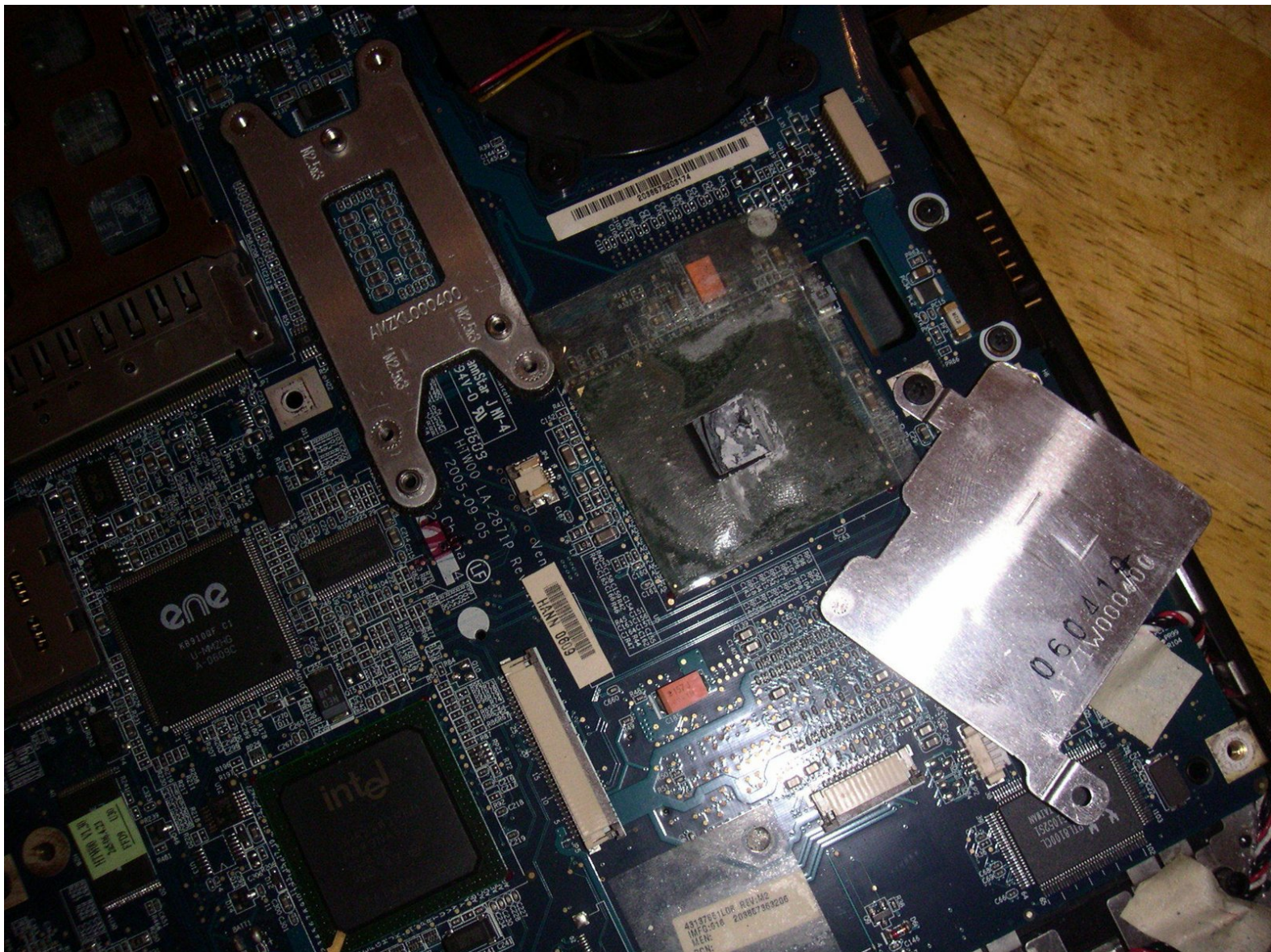




Toshiba Equium M70 Faulty Graphics

This will fix the dreaded graphics driver issues, when windows says the driver has stopped responding. The problem is caused by a very thin heat sink on the GPU, with little to no thermal paste, when the chip heats up the thin heat sink expands & concave

Written By: Terry Sim



INTRODUCTION

The fix, I place a thin alloy shim between the existing heatsink & chip, with a good quality thermal paste, I always use artic silver 5(never lets you down)

TOOLS:

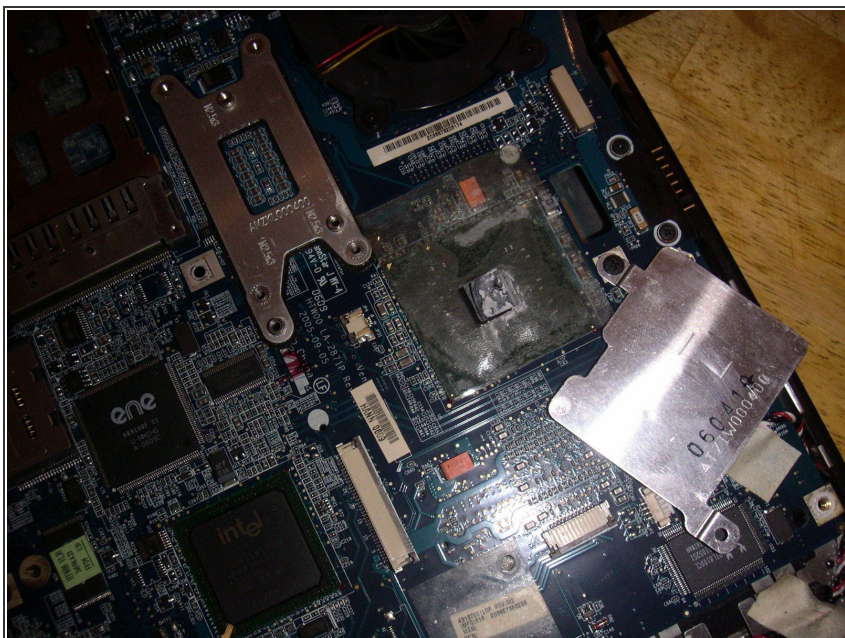
- [Arctic Silver Thermal Paste](#) (1)
 - [Arctic Silver ArctiClean](#) (1)
-

Step 1 — Toshiba Equium M70 Faulty Graphics



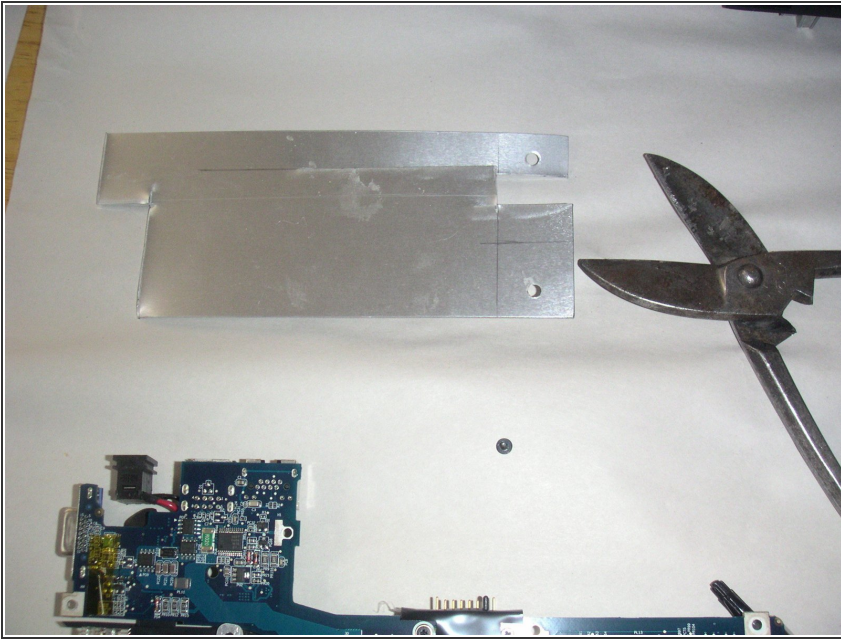
- This is a complete top half strip down to fix (takes me less than 30 minutes)

Step 2



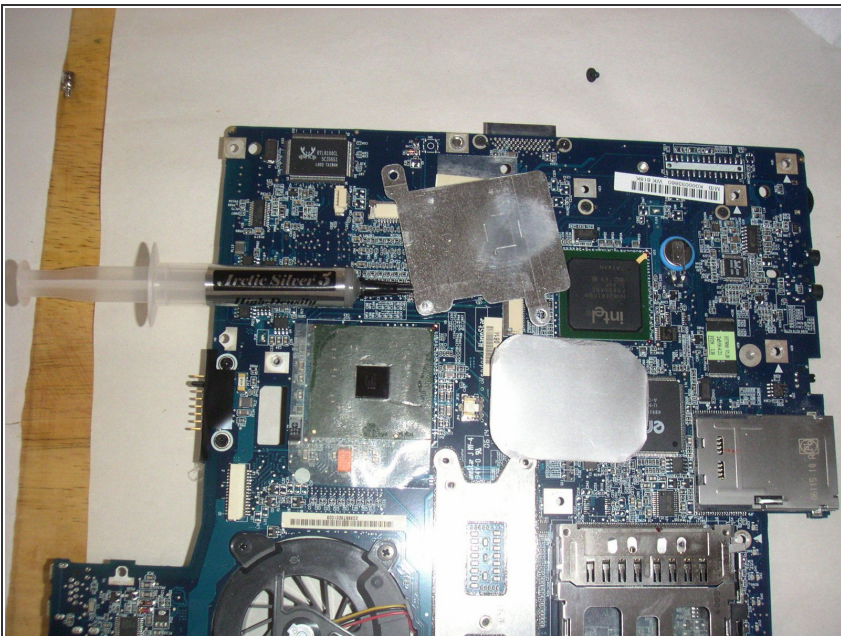
- this is the culprit, as you can see the shim can easily overheat & go concave lifting off the chip.

Step 3



- cut a thin piece of alloy to the same size as the existing shim, i used an old alloy door push plate(easy to cut) & is the ideal thickness

Step 4



- Thoroughly clean the chip with pure alcohol, then apply an even spread of good quality thermal paste(Arctic silver 5) will never let you down

Step 5



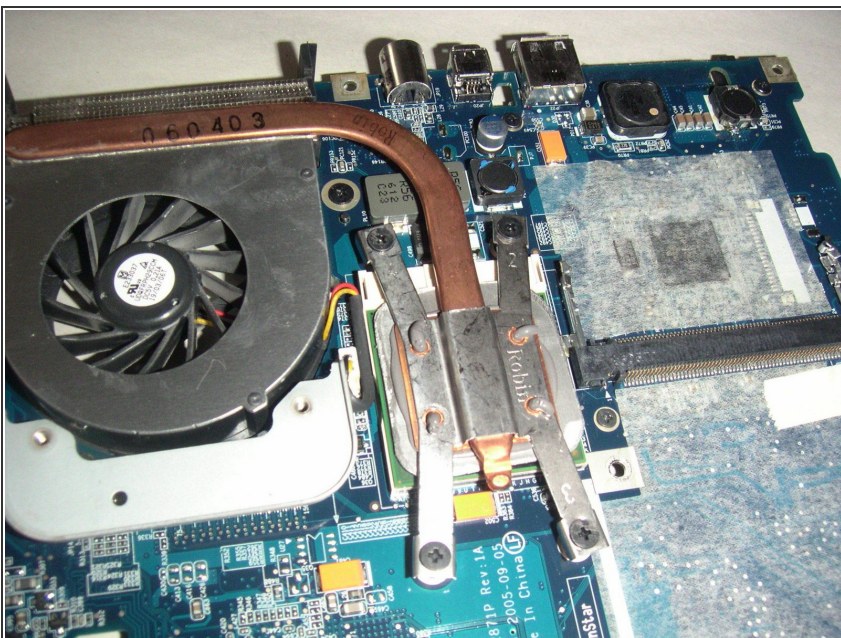
- Then apply more thermal paste to the top of the shim

Step 6



- The new alloy shim is under the existing thin shim. I've done more than 20 of these repairs & had 100% success rate I always do the same to the CPU (might as well your already in there).,

Step 7



- This is the CPU with the new alloy shim fitted.

To reassemble your device, follow these instructions in reverse order.