



# Toshiba Excite 10 AT300 Back Panel Replacement

Prerequisite only

Written By: Andrew Gillis



---

## INTRODUCTION

This guide serves as a prerequisite step for all of the other repair guides. Removing the back panel is necessary to access any of the hardware within the tablet.



### TOOLS:

- [iFixit Opening Tools](#) (1)
-

## Step 1 — Remove SD Card



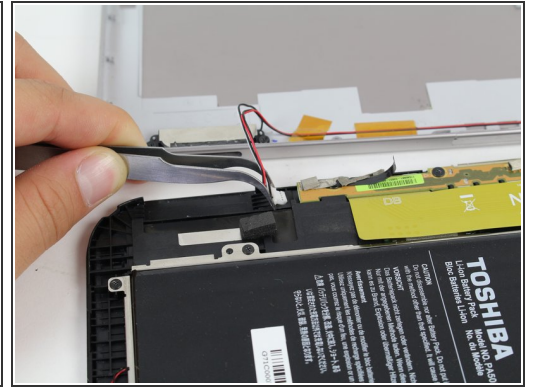
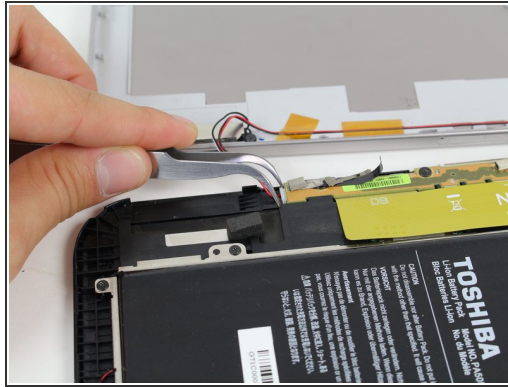
- Remove the SD card from the SD card slot.

## Step 2 — Open the Tablet



- Use the opening tool to separate the front and rear panels by slipping the tool underneath the screen edge and sliding it around the entire device.
- ⓘ Make sure you unclip all of the clips on the back panel, or pulling it off will be difficult and may damage the tablet.

## Step 3 — Disconnect Speaker Wires



- Remove the speaker cable from its socket by gripping both sides of the white connector piece with tweezers and pulling straight out.

⚠ Be careful not to rip the wires out of the white connector piece.

To reassemble your device, follow these instructions in reverse order.