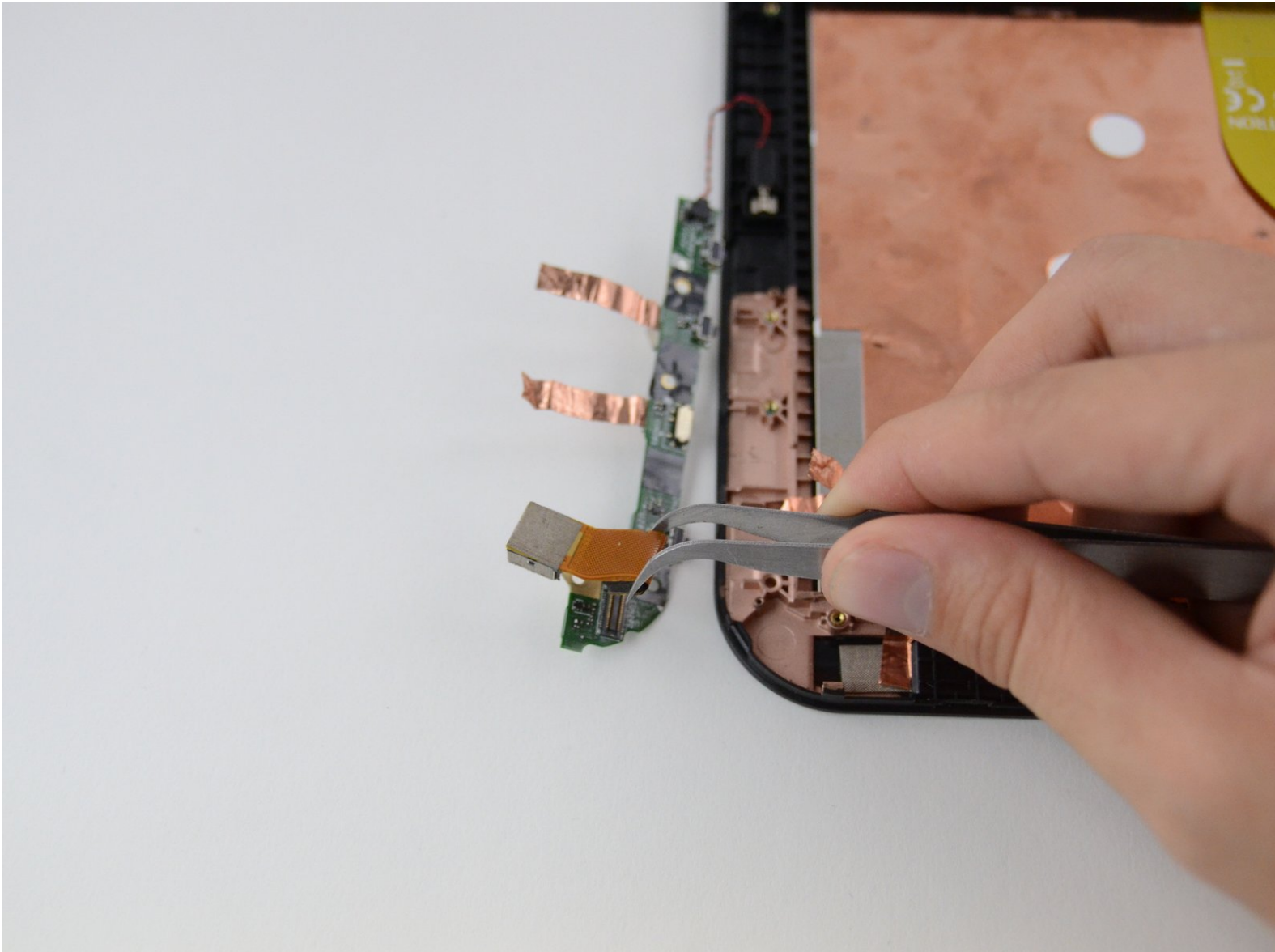




Toshiba Excite 10 AT300 Rear-Facing Camera Replacement

This guide will detail the steps to replace the rear-facing camera on the Toshiba Excite 10 AT300

Written By: Gus Holz



INTRODUCTION

If the rear facing camera on your Toshiba Excite 10 AT300 is now longer functioning, replacement isn't difficult and this guide will give you the step by step procedure. It involves removing a screw, a ribbon cable, and several copper foil wires.



TOOLS:

- [iFixit Opening Tools](#) (1)
- [Phillips #00 Screwdriver](#) (1)



PARTS:

- [Replacement 5 Megapixel Camera for Toshiba Excite 10](#) (1)

Step 1 — Remove SD Card



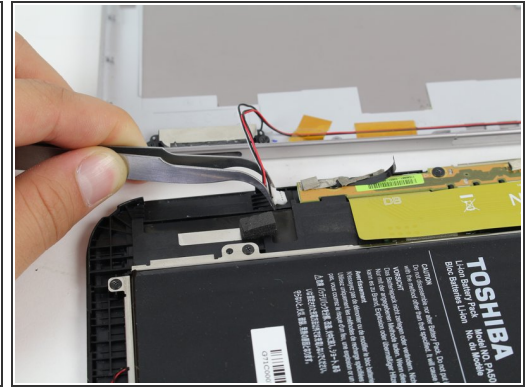
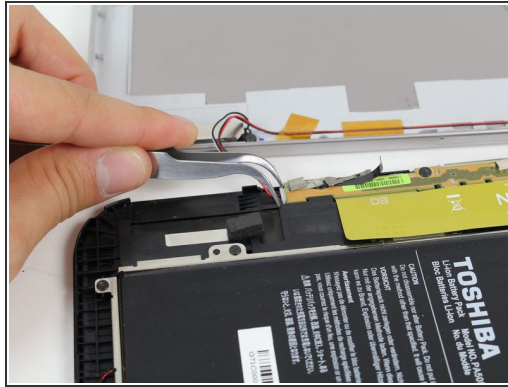
- Remove the SD card from the SD card slot.

Step 2 — Open the Tablet



- Use the opening tool to separate the front and rear panels by slipping the tool underneath the screen edge and sliding it around the entire device.
- ⓘ Make sure you unclip all of the clips on the back panel, or pulling it off will be difficult and may damage the tablet.

Step 3 — Disconnect Speaker Wires



- Remove the speaker cable from its socket by gripping both sides of the white connector piece with tweezers and pulling straight out.

⚠ Be careful not to rip the wires out of the white connector piece.

Step 4 — Remove Screws



- Using a #00 Phillips screwdriver, remove the following screws:
 - Five 3mm Phillips #00 screws

Step 5 — Remove Battery Cable



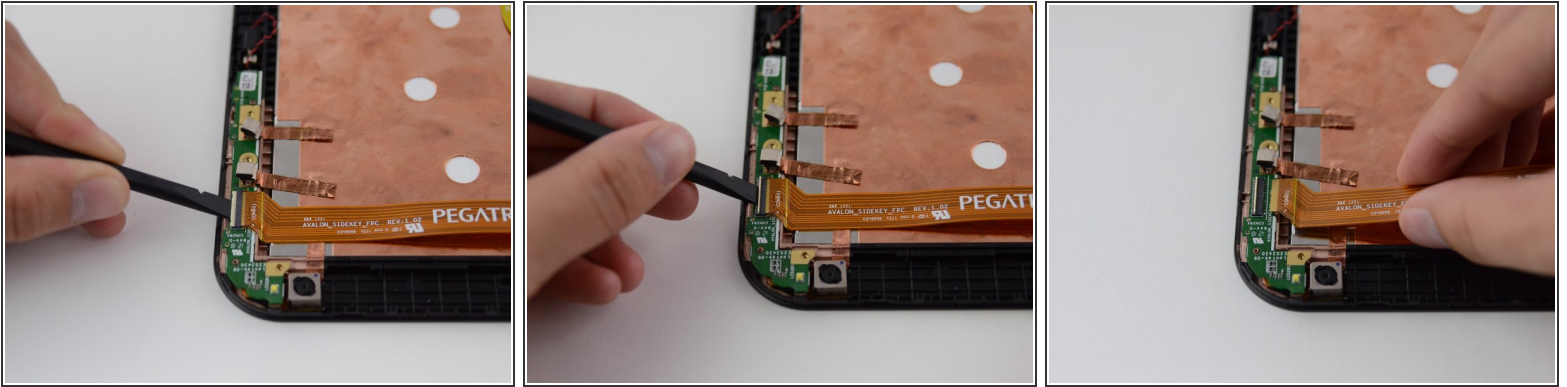
- Gently lift the battery, pulling away from the tab holding it in place at the bottom.
- While holding the battery up, use a pair of tweezers to remove the battery cable from its connector.

Step 6 — Remove screw and yellow tape



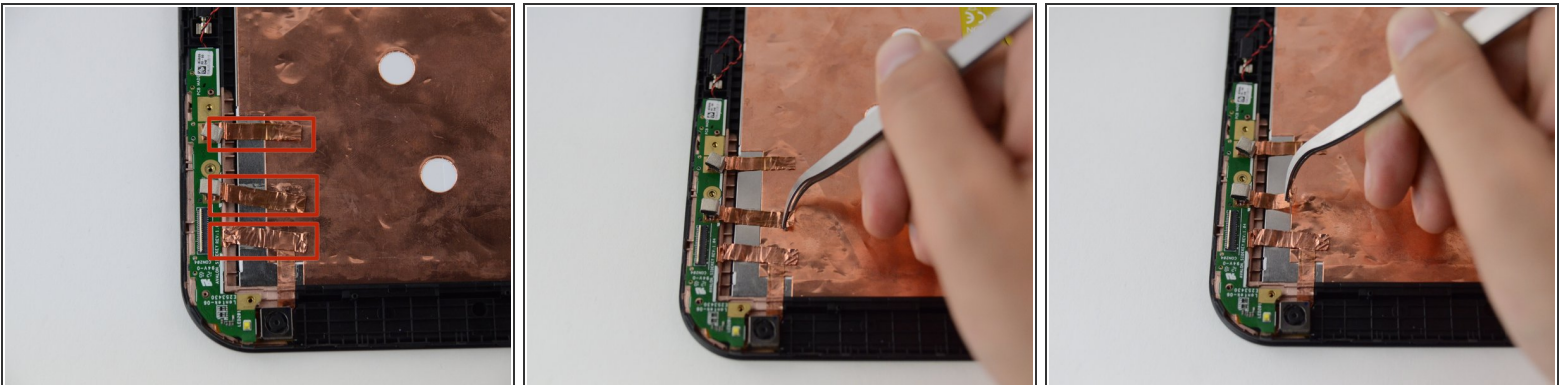
- Using a #00 Philips screwdriver, remove the screw attaching daughter board.
- Remove the yellow tape using a pair of tweezers.

Step 7 — Remove Ribbon Cable



- Unlock the ribbon cable housing using tweezers and/or a spudger.
- Gently pull the ribbon cable out of its housing using the tweezers or your hands.

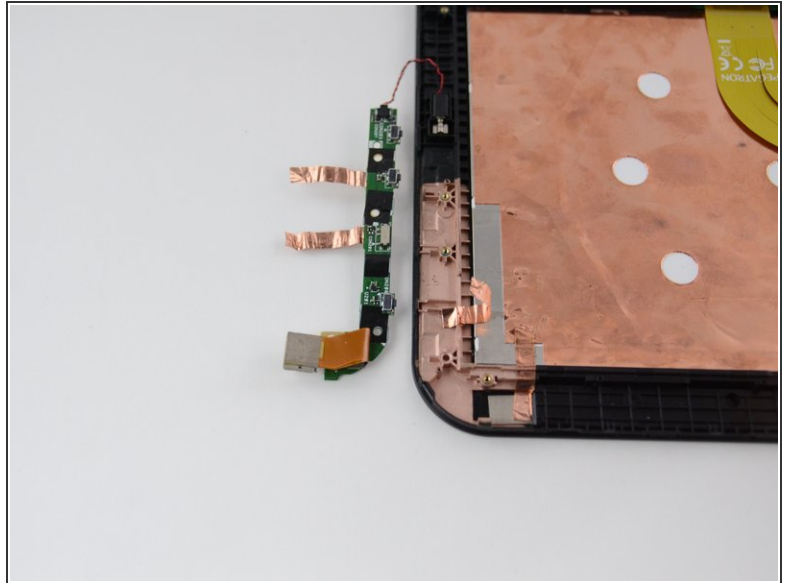
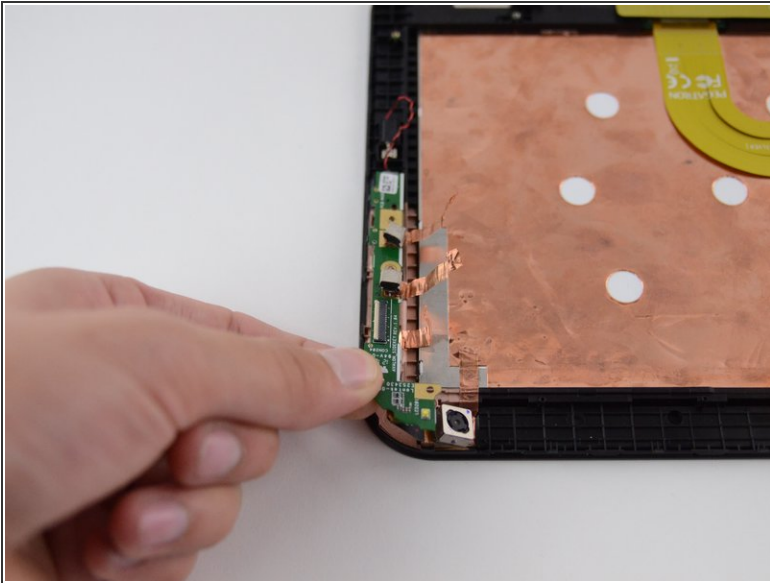
Step 8 — Remove copper foil wires



- Pull copper tape away from the back, keeping it connected to the green rear camera board.

⚠ Be careful not to rip the copper tape.

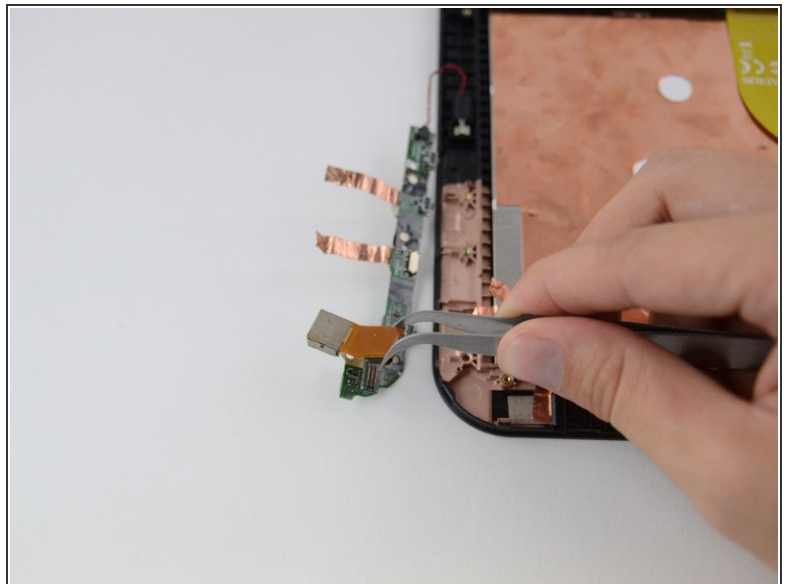
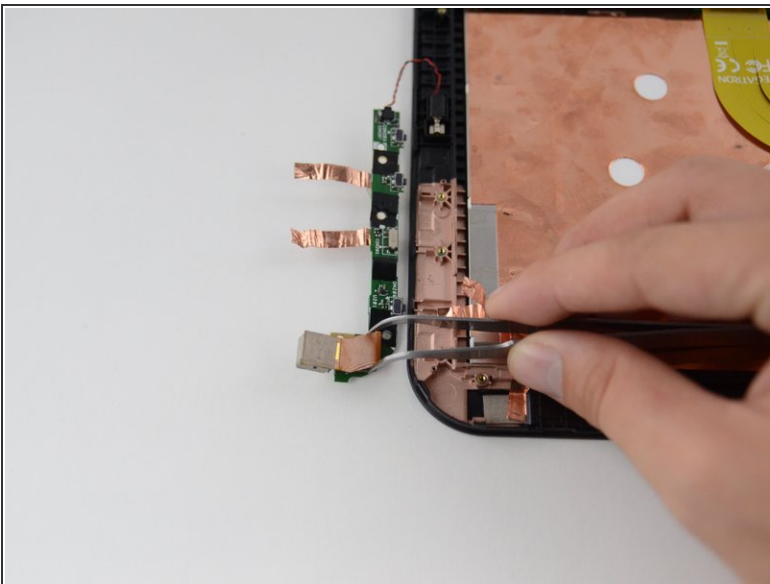
Step 9 — Remove the daughter board



- Using your hands remove daughter board by lifting it off of the tablet chassis. Flip it over and place it next to the tablet face-down.

⚠ Do not disconnect the red and black wires connecting it to the vibrating mechanism.

Step 10



- Gently pinch the ribbon cable connector between two fingers or with tweezers and pull it straight outwards. The ribbon cable connector should disconnect and the camera can now be replaced.

To reassemble your device, follow these instructions in reverse order.