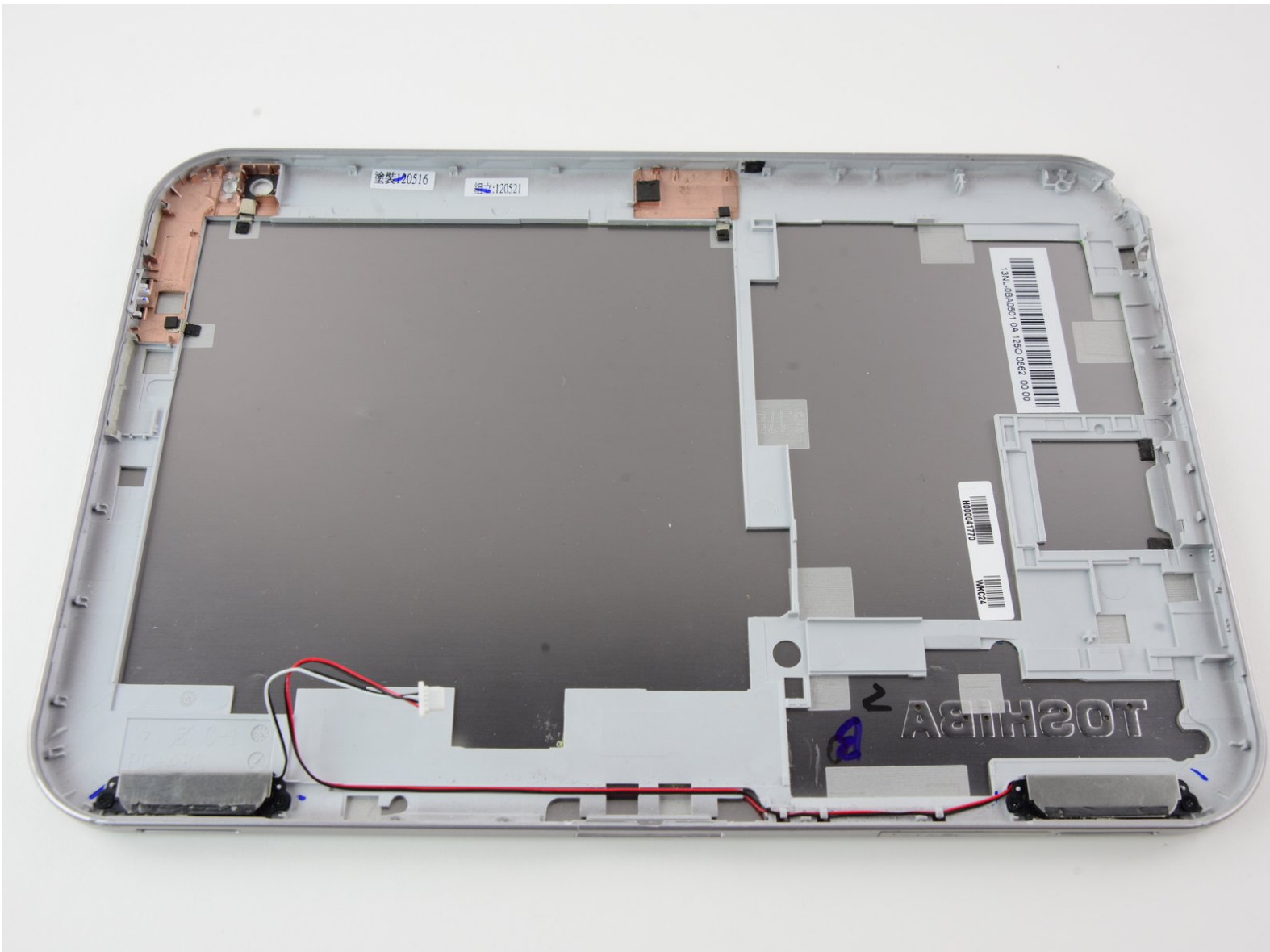




# Toshiba Excite 10 AT300 Speaker Replacement

Instructions on how to remove and replace the speakers.

Written By: Andrew Gillis



## INTRODUCTION

This guide will walk through how to open up the Toshiba Excite 10 and replace the broken speakers. Ensure that you have gone through the troubleshooting page section on sound problems before attempting this repair to ensure that the problem is not software-based.



### TOOLS:

- [Phillips #00 Screwdriver](#) (1)
- [iFixit Opening Tools](#) (1)



### PARTS:

- [Toshiba Excite 10 Speakers](#) (1)

## Step 1 — Remove SD Card



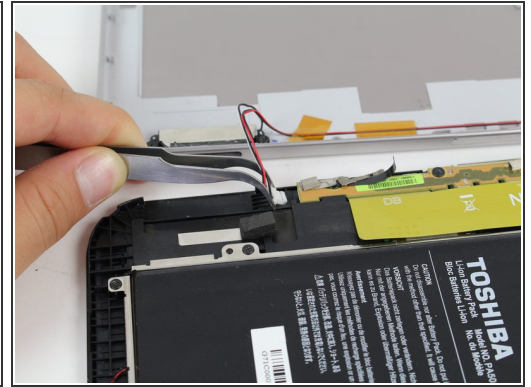
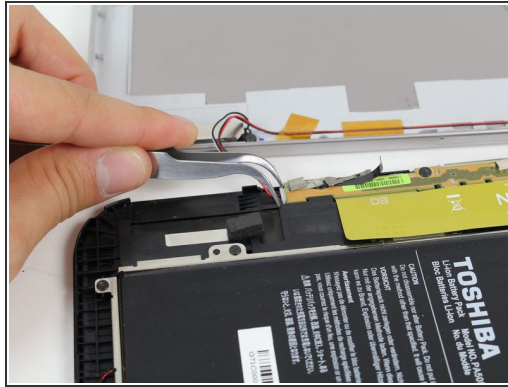
- Remove the SD card from the SD card slot.

## Step 2 — Open the Tablet




- Use the opening tool to separate the front and rear panels by slipping the tool underneath the screen edge and sliding it around the entire device.
- ⓘ Make sure you unclip all of the clips on the back panel, or pulling it off will be difficult and may damage the tablet.

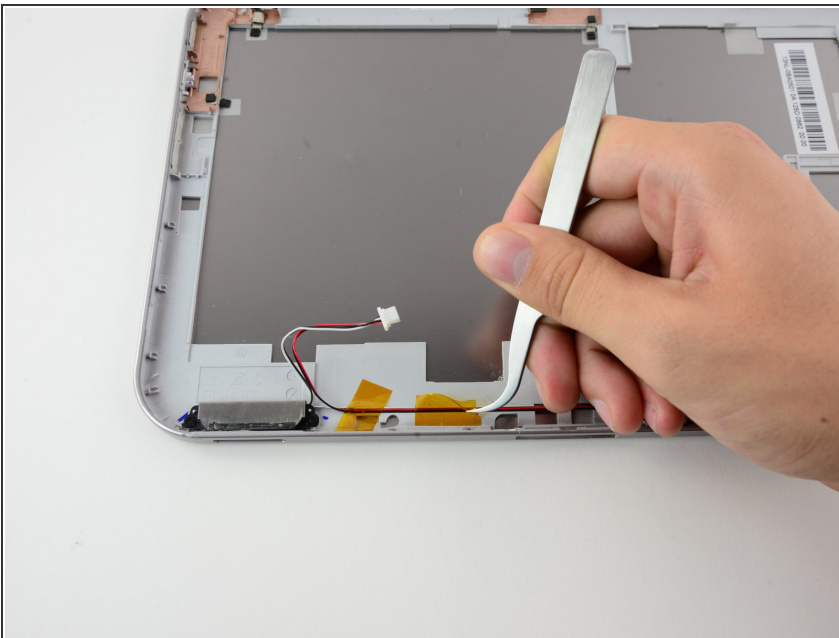
### Step 3 — Disconnect Speaker Wires



- Remove the speaker cable from its socket by gripping both sides of the white connector piece with tweezers and pulling straight out.

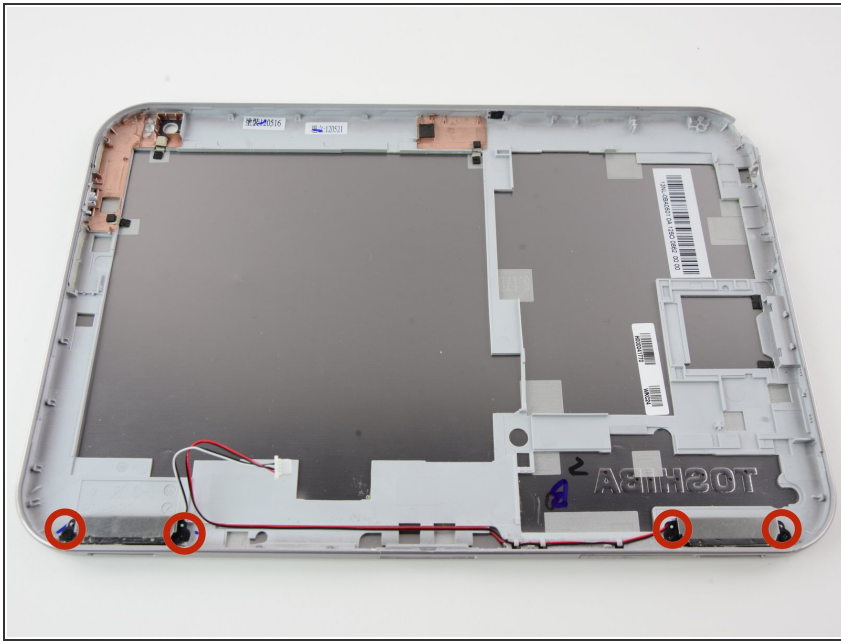
 Be careful not to rip the wires out of the white connector piece.

### Step 4 — Removing Tape



- Using either your hands or tweezers remove the 3 pieces of tape holding the speaker wires to the back panel.

## Step 5 — Unscrew Speakers



- Using a #00 Phillips screwdriver, remove the four 3mm #00 Phillips screws that hold the speakers in place.
- Using your hands, remove the old speakers from back panel of tablet.
- Place the new speakers where the old speakers were and in the same orientation.

To reassemble your device, follow these instructions in reverse order.