



Toshiba Excite 7 Screen Replacement

This guide will give instructions on how to safely remove and replace the screen of a Toshiba Excite 7.

Written By: Sean Ulch

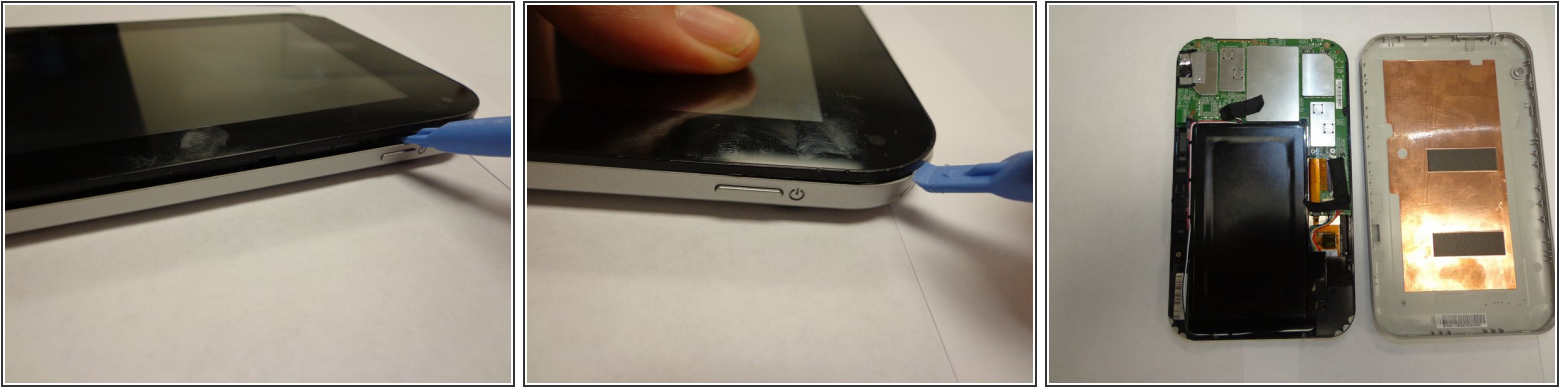




TOOLS:

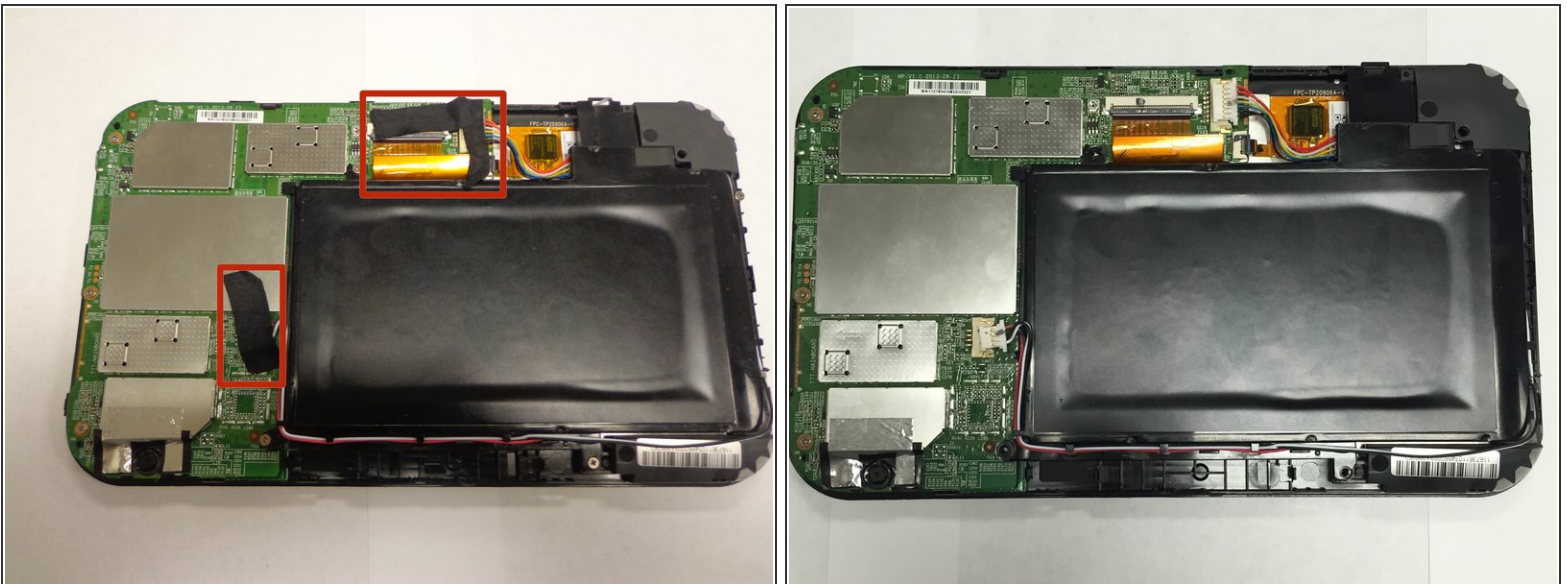
- [64 Bit Driver Kit](#) (1)
 - [Magnetic Project Mat](#) (1)
 - [Tweezers](#) (1)
 - [iFixit Opening Tools](#) (1)
-

Step 1 — Battery Removal



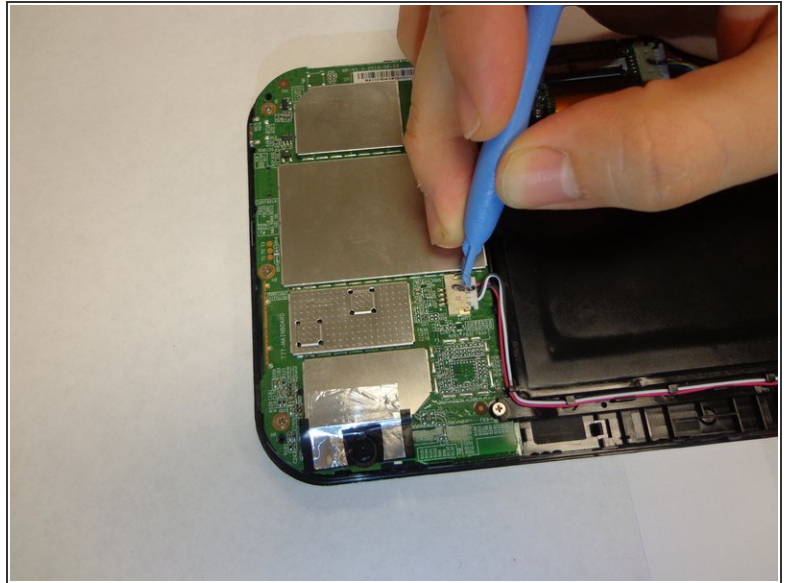
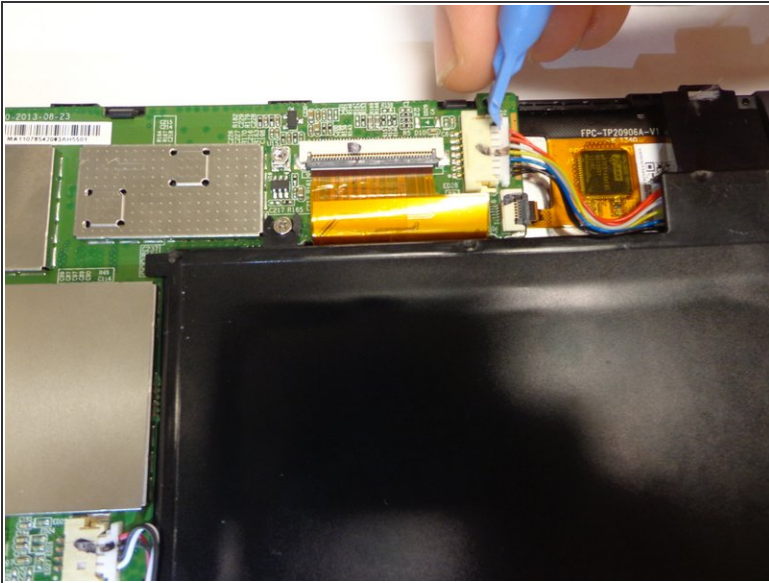
- Remove the back cover.
- Work your fingernail or flat object under the cover's seal. Start at the top right corner just above the front facing camera this is the device "Weak Spot".
- After you pry open the first clip slide the flat object along the perimeter of the cover until the cover is removable. You should hear the clips pop open.

Step 2 — Remove Tape



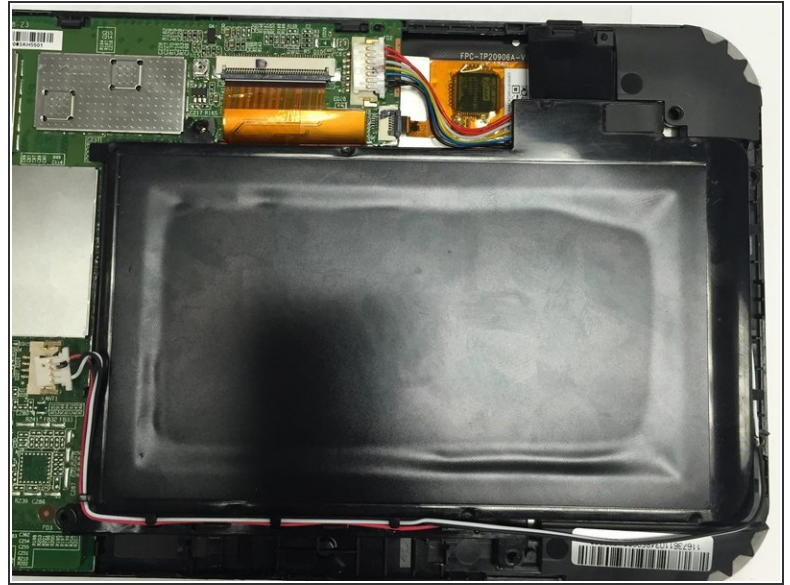
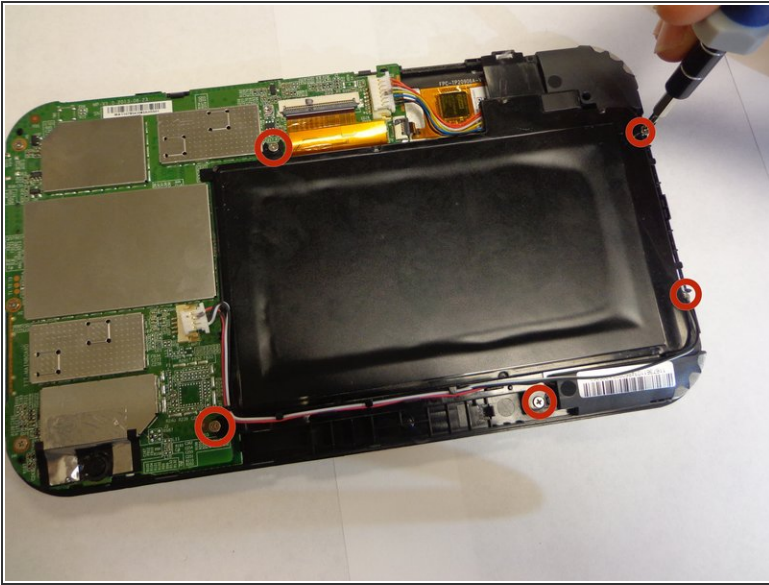
- Remove any black tape from the device.
- Keep the tape, you will need to put it back on when you are done.

Step 3 — Unplug Wires



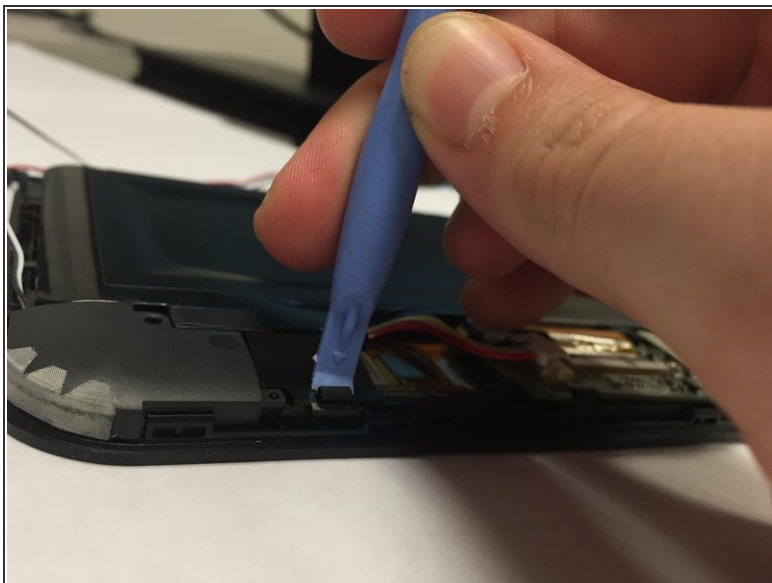
- Unplug the wires from the battery.
- The battery is the black rectangle in the middle of the device.
- The device has two wiring harnesses attached to it, one just above the battery and one just to the right.

Step 4 — remove screws



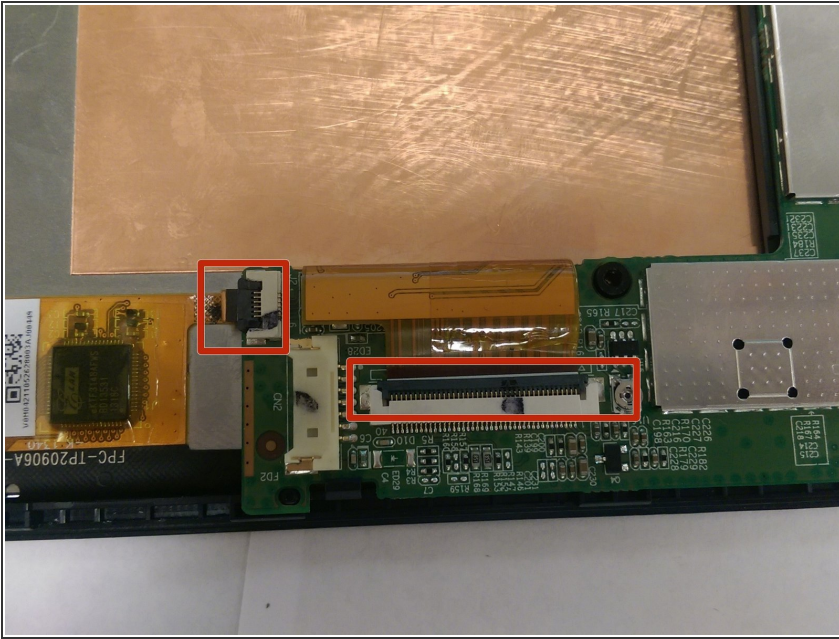
- Unscrew the battery from the device.
- The device has 5 screws to remove, keep the screws.

Step 5 — Unclip and remove battery



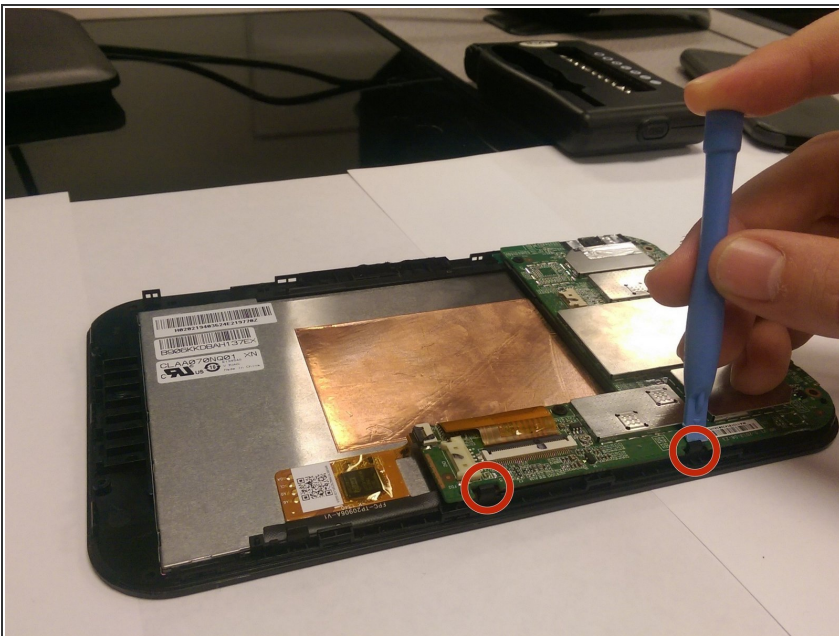
- The battery has one clip you will need to remove .
- The clip is located at the bottom right corner of the battery just above the right speaker.
- Push the clip back then lift the battery up.
- The speakers and wires are not secured to the battery, they may fall off.

Step 6 — Remove Data cable



- The screen is connected to the circuit board by 2 “Data Cables” (orange ribbons).
- Data cables include 3 working components, data cables, the white harness plug, and the black lever.
- Gently flip the black lever up and unplug data cables.

Step 7 — Removing the Circuit Board



- Remove the circuit board by gently coaxing it from the clips located just to the right of the circuit board.

Step 8 — Installing the Replacement Screen Assembly



- The screen has a rubber device used to support the volume control switch.
- Remove the rubber device from the old screen.
- Make sure you keep the rubber device to be install into the new screen.
- Repeat other steps in reverse to install replacement screen.

To reassemble your device, follow these instructions in reverse order.