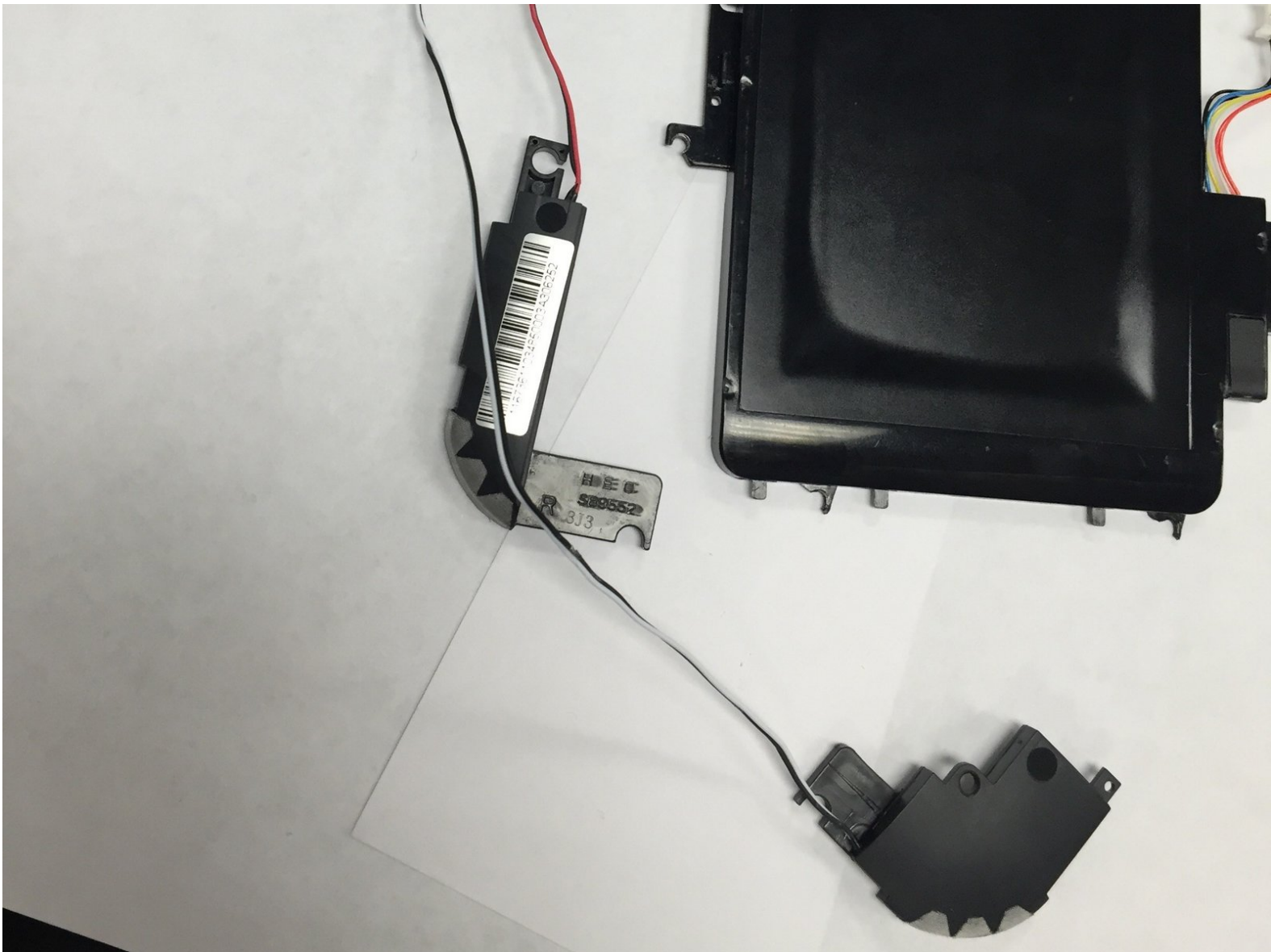




Toshiba Excite 7 Speakers Replacement

This guide will give instruction on how to remove and replace the speakers of a Toshiba Excite 7.

Written By: Sean Ulch

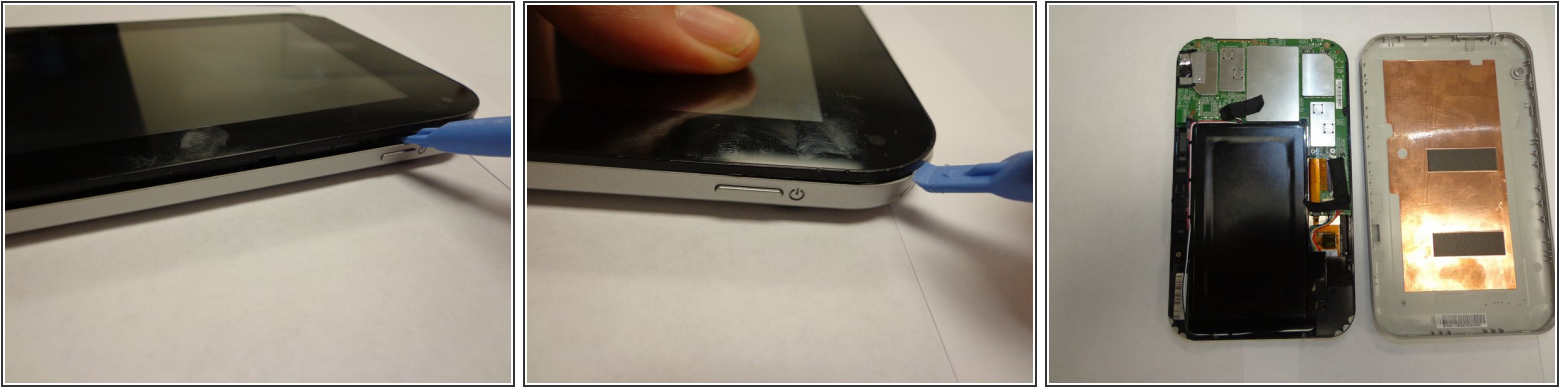




TOOLS:

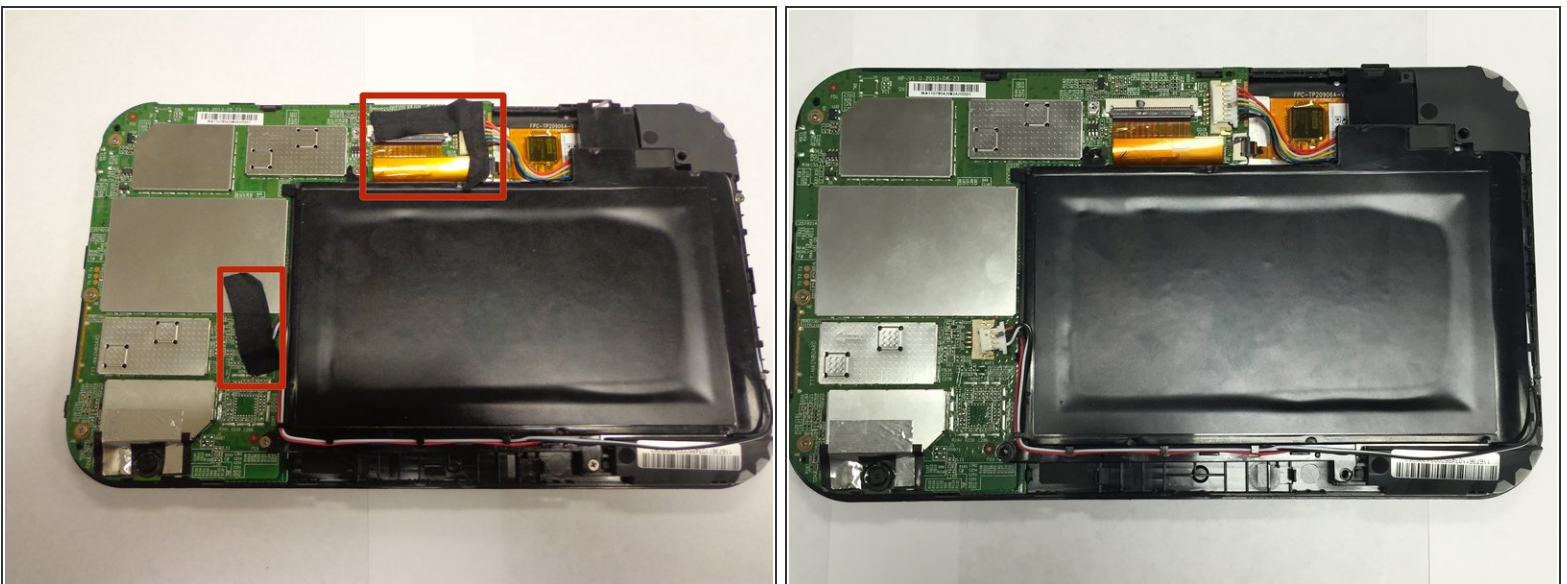
- [64 Bit Driver Kit](#) (1)
 - [Magnetic Project Mat](#) (1)
 - [Tweezers](#) (1)
 - [iFixit Opening Tools](#) (1)
-

Step 1 — Battery Removal



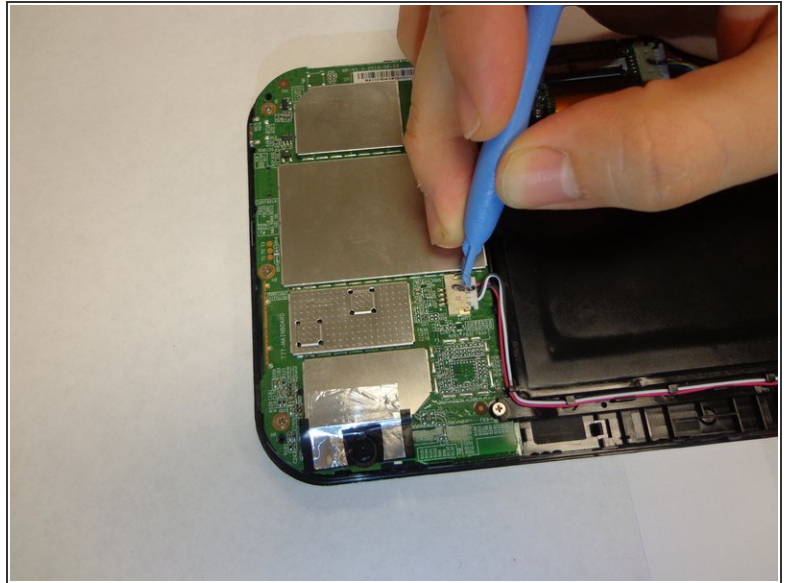
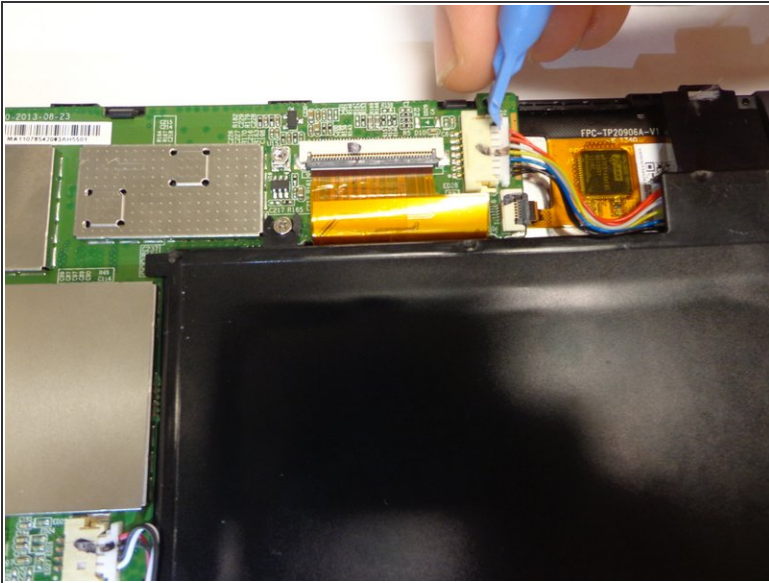
- Remove the back cover.
- Work your fingernail or flat object under the cover's seal. Start at the top right corner just above the front facing camera this is the device "Weak Spot".
- After you pry open the first clip slide the flat object along the perimeter of the cover until the cover is removable. You should hear the clips pop open.

Step 2 — Remove Tape



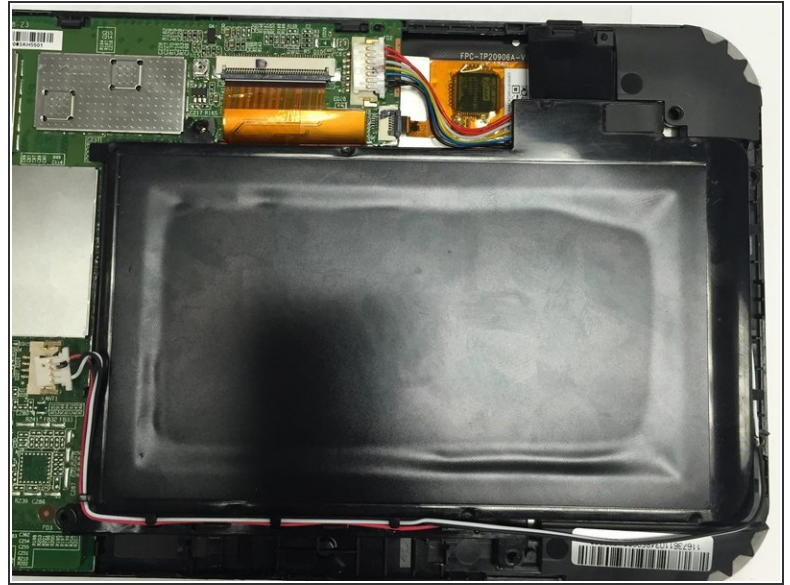
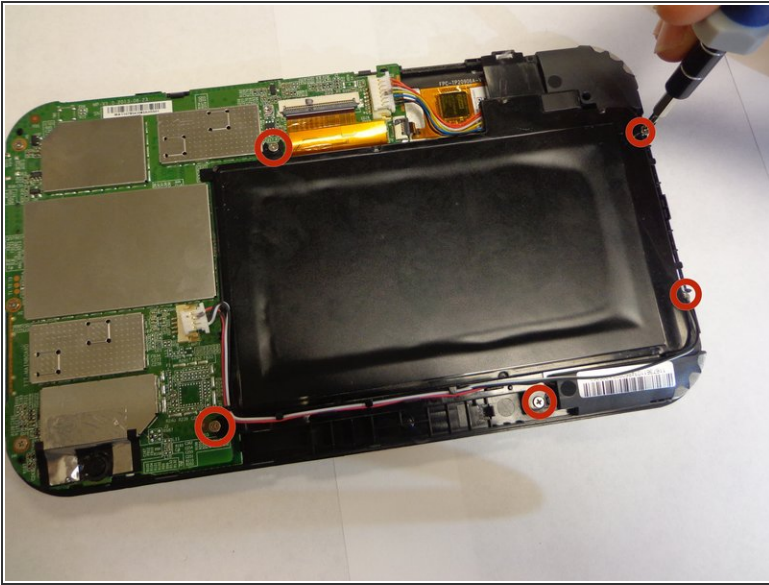
- Remove any black tape from the device.
- Keep the tape, you will need to put it back on when you are done.

Step 3 — Unplug Wires



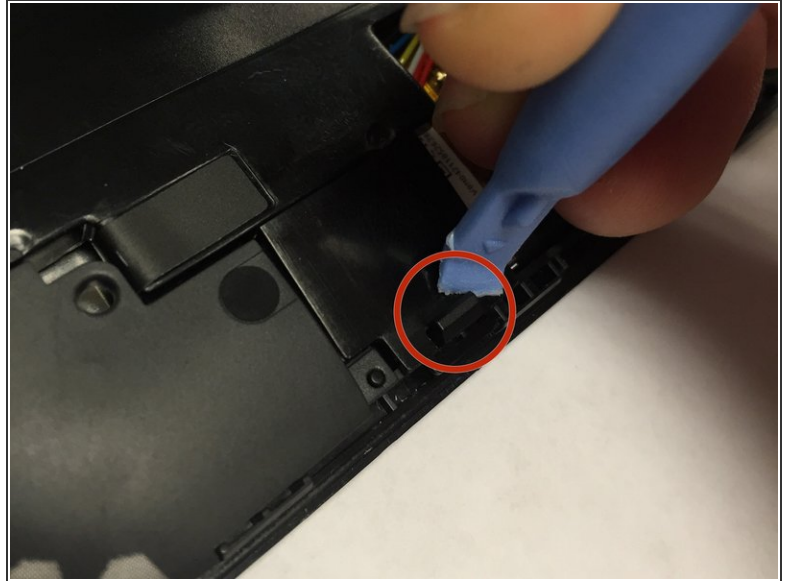
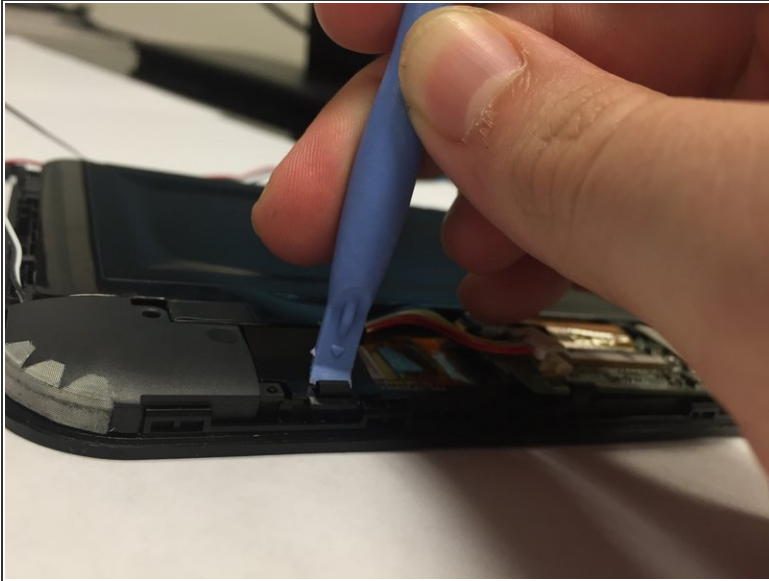
- Unplug the wires from the battery.
- The battery is the black rectangle in the middle of the device.
- The device has two wiring harnesses attached to it, one just above the battery and one just to the right.

Step 4 — remove screws



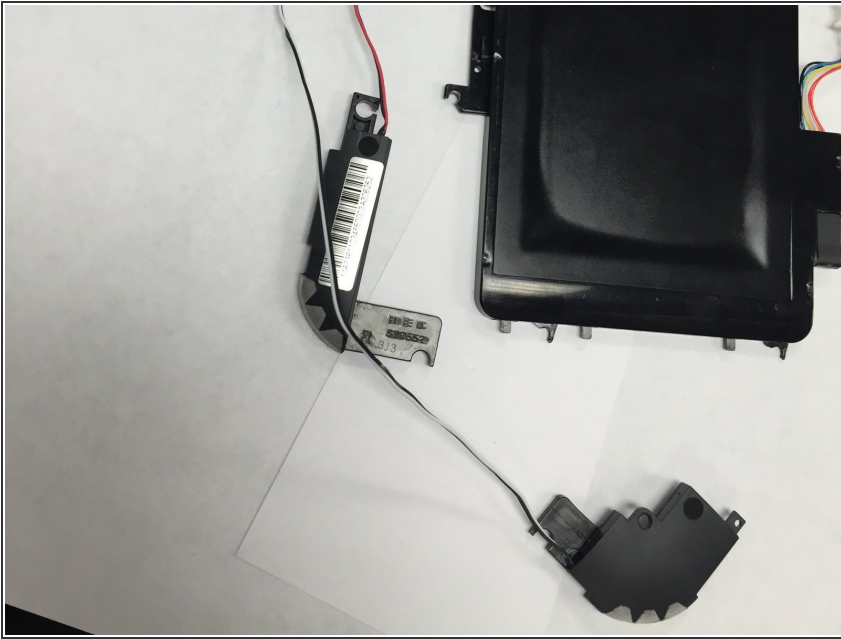
- Unscrew the battery from the device.
- The device has 5 screws to remove, keep the screws.

Step 5 — Unclip and remove battery



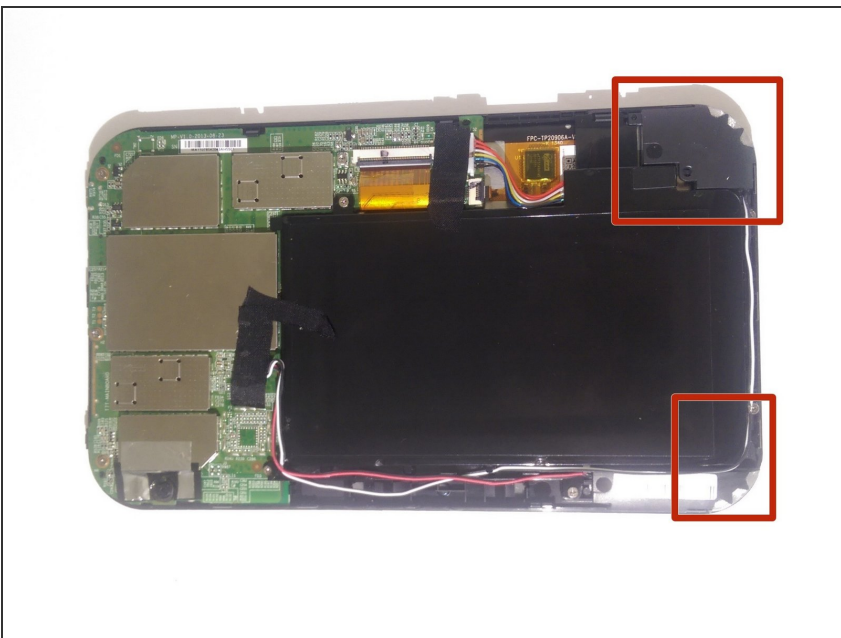
- The battery has one clip you will need to remove .
- The clip is located at the bottom right corner of the battery just above the right speaker.
- Push the clip back then lift the battery up.
- The speakers and wires are not secured to the battery, they may fall off.

Step 6 — Removing Speakers



- Remove the speakers from the battery. The speakers are the plastic devices with the mesh on them.
- Wires are wedged under a couple of clips on the battery (they run along the bottom and left edges of the battery).
- Lightly coax the wires loose. The wiring harness and speakers come off the battery easily. Be sure to remove wires from clips.

Step 7 — Replacing Speaker



- Place the new speakers exactly where you took the old ones from.
- Lightly slide the wires underneath the clips the same way they were before the removal process.

To reassemble your device, follow these instructions in reverse order.