



Toshiba Mini NB505 Keyboard Replacement

The keyboard is one of the most important parts of any computer. If your keys are no longer responsive after years of wear and tear, it may be time to replace the keyboard.

Written By: Owen Velho



INTRODUCTION

This guide will show you the easiest way to replace your keyboard.



TOOLS:

- [iFixit Opening Tools](#) (1)
 - [Phillips #000 Screwdriver](#) (1)
-

Step 1 — Battery



- Located on the bottom of the laptop, find the two tabs shown in the picture and push both of them outwards away from the battery.

Step 2



- While pushing the tabs outwards, push on the raised bumps on the battery away from the laptop.

Step 3



- The battery is now removed

Step 4 — Keyboard



- Locate the five 1.2 mm Phillips # 000 screws inside of the battery housing.

Step 5



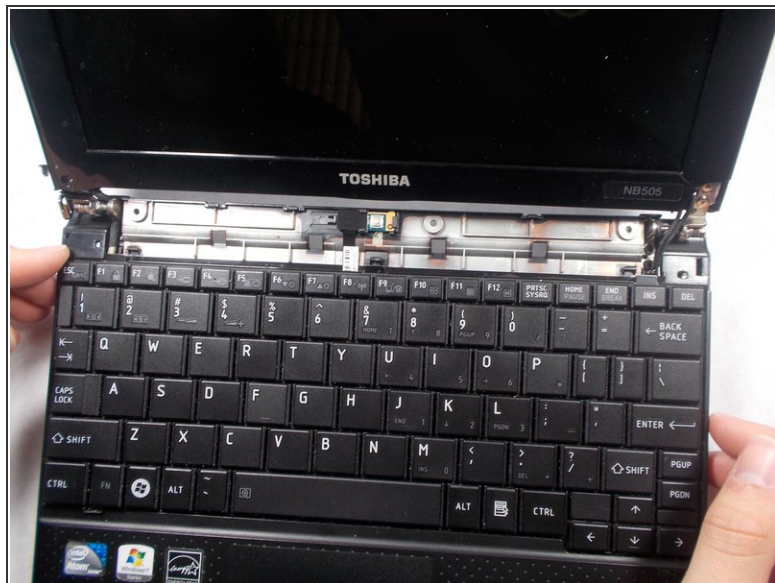
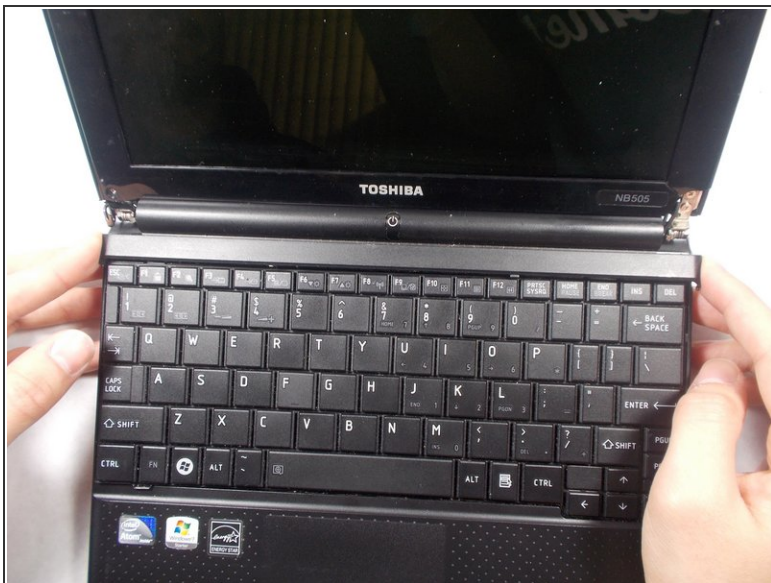
- Using a Phillips head #000 screwdriver, carefully remove the five 1.2mm screws.

Step 6



- Use a plastic pry tool to pop the tab holding the keyboard to the laptop.

Step 7



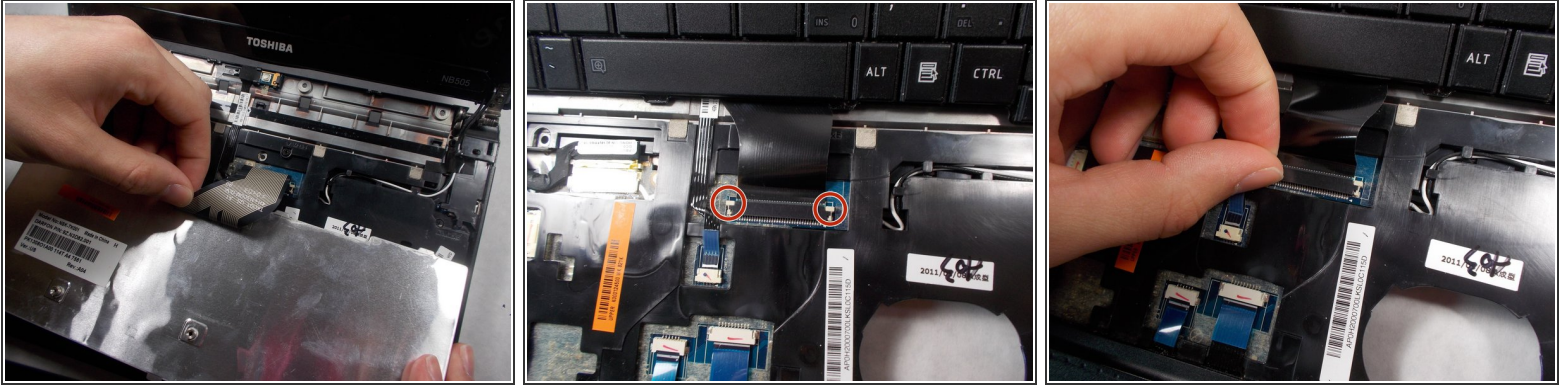
- Remove plastic plate above keyboard.

Step 8



- Lift the keyboard gently away from the computer.
- Do not attempt to fully remove the keyboard, as it is attached to the laptop by a ribbon cable.

Step 9



- Locate the ribbon wire under the keyboard. Slide the white tabs forward and the keyboard will come loose.

To reassemble your device, follow these instructions in reverse order.