



Toshiba Mini NB505 RAM Replacement

This guide will show you how to replace the RAM in your Toshiba Mini NB505

Written By: Michael Hamilton



INTRODUCTION

Your computer's RAM or Random Access Memory, allows it to run various programs and perform several tasks. If you find that your computer is beginning to run slowly, it may be time to upgrade or replace your RAM. This guide will show you exactly how to do that.



TOOLS:

- [Phillips #000 Screwdriver](#) (1)
-

Step 1 — Bottom Plate



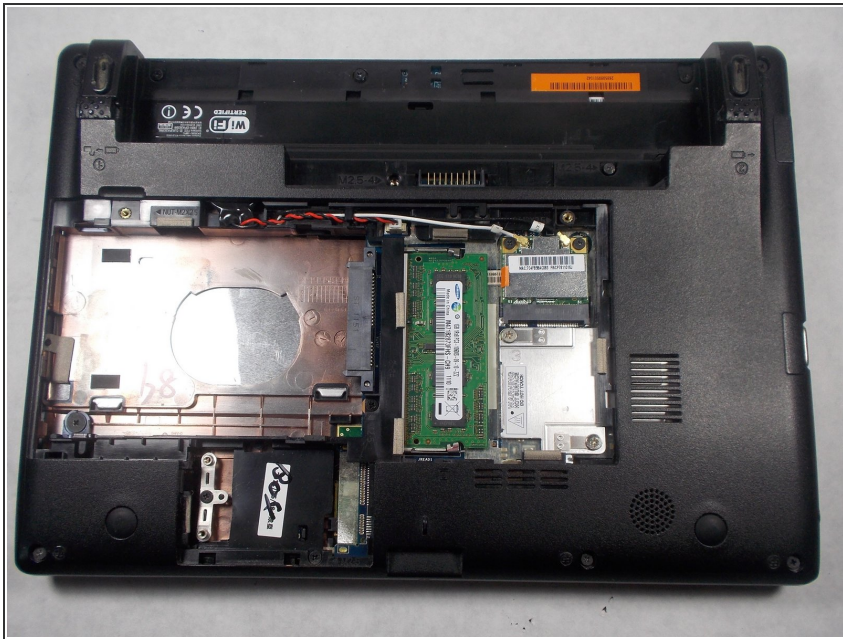
- Locate the two 1.2mm philips #000 screws holding the bottom plate onto the laptop.

Step 2



- Using a Philips head #000 screwdriver, carefully remove the two 1.2mm screws.

Step 3



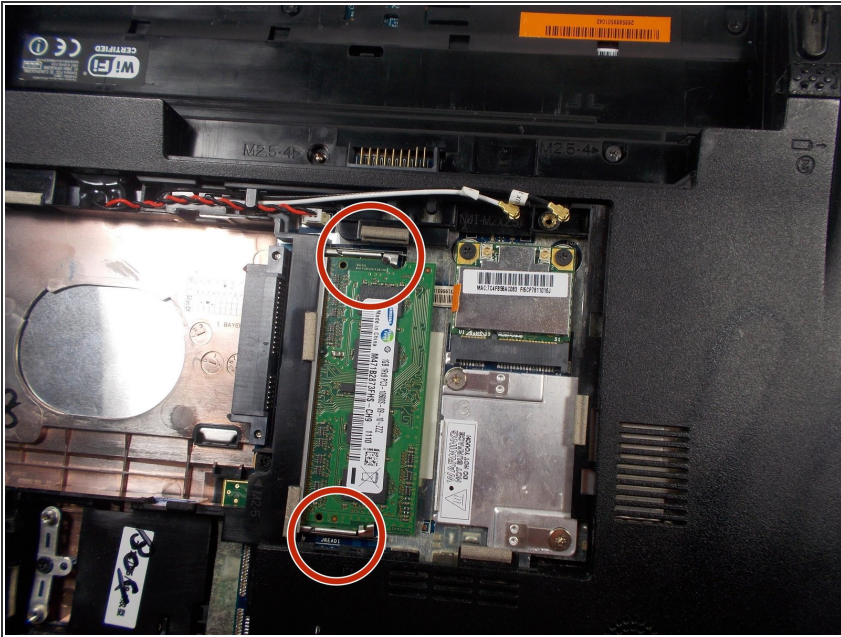
- The plate can now be easily removed.

Step 4 — RAM



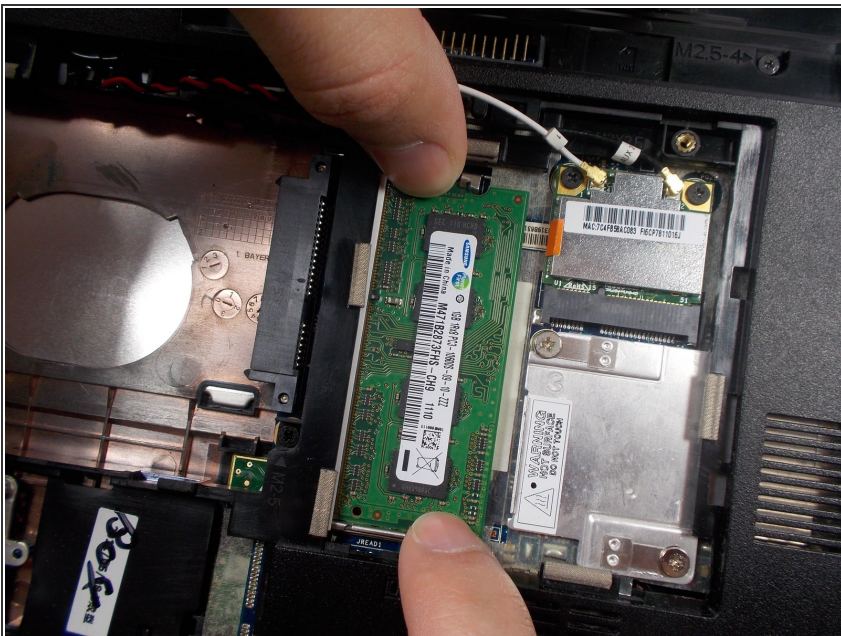
- Locate the RAM card

Step 5



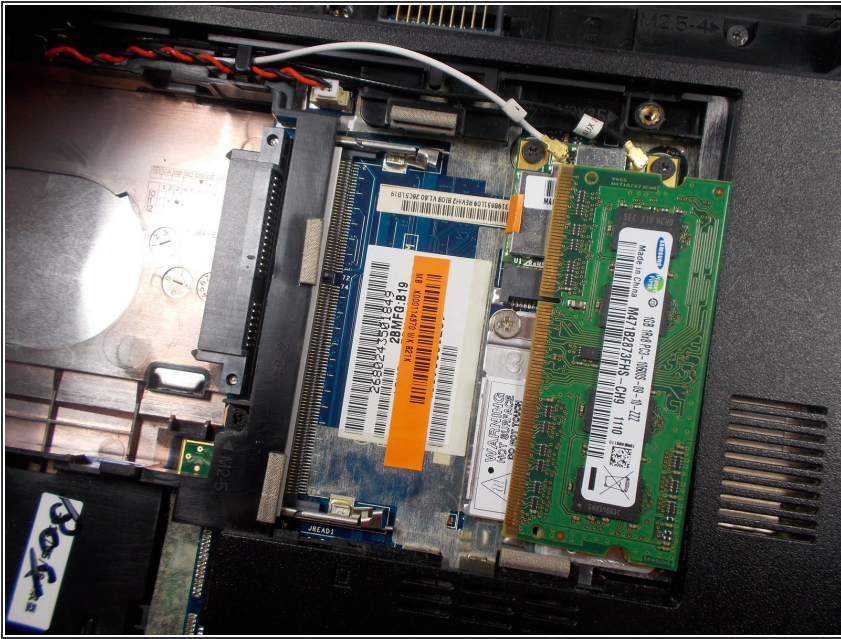
- Locate the two small prongs on each side of the RAM.

Step 6



- Slide the two metal prongs away from the RAM card.

Step 7



- Remove RAM card from laptop.

To reassemble your device, follow these instructions in reverse order.