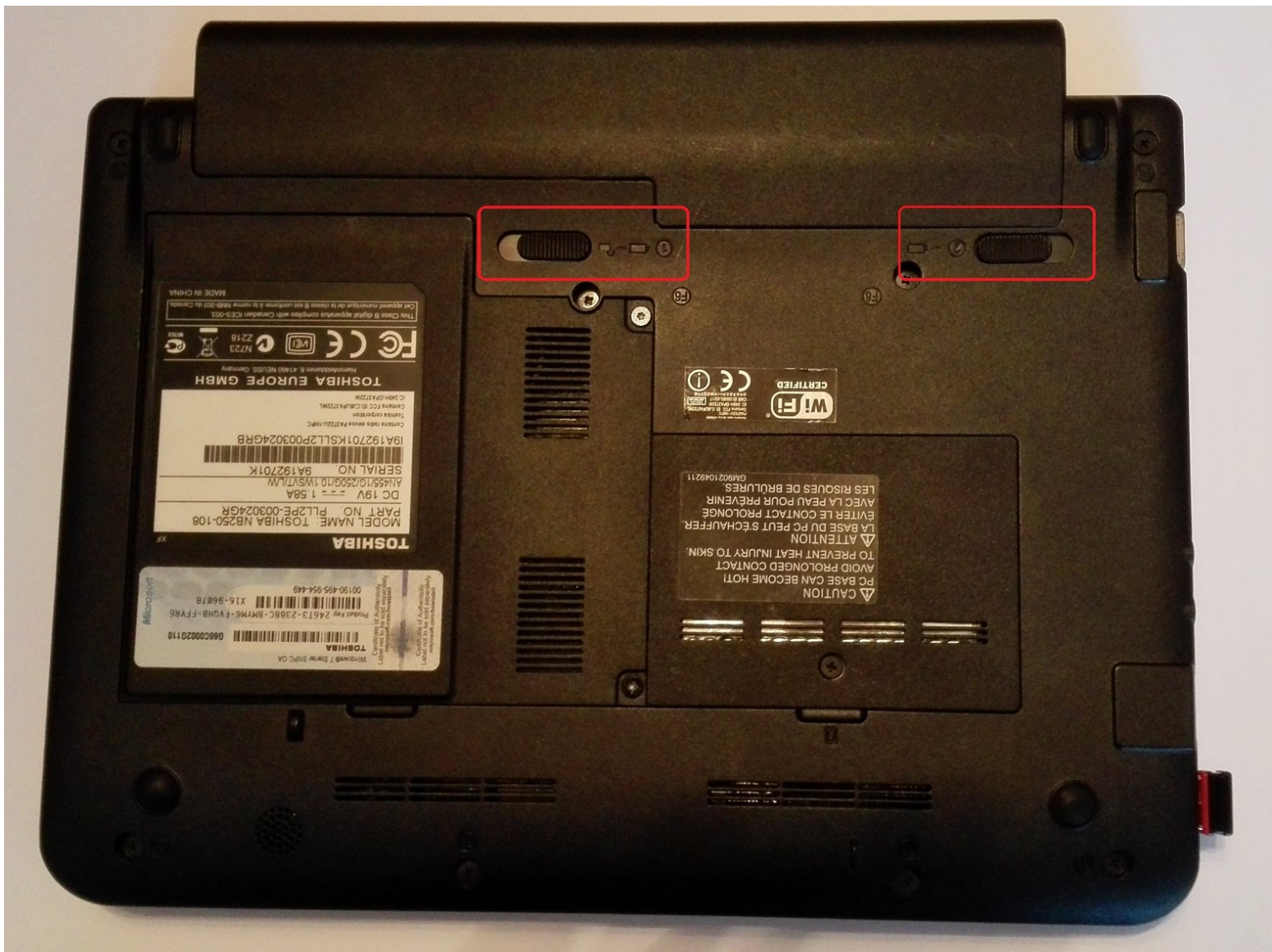




# Toshiba NB250-108 KEYBOARD Replacement

Instructions for removing the keyboard

Written By: Guenter Hildebrandt

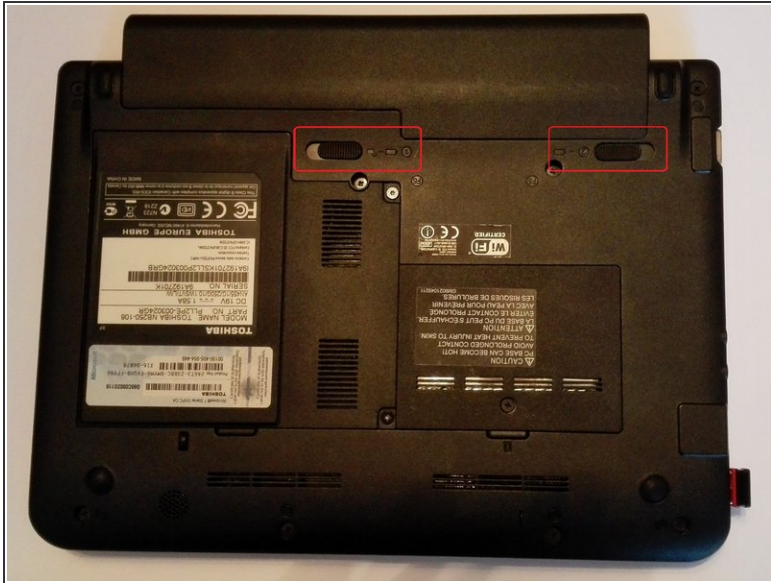




## TOOLS:

- [New Item](#) (1)
-

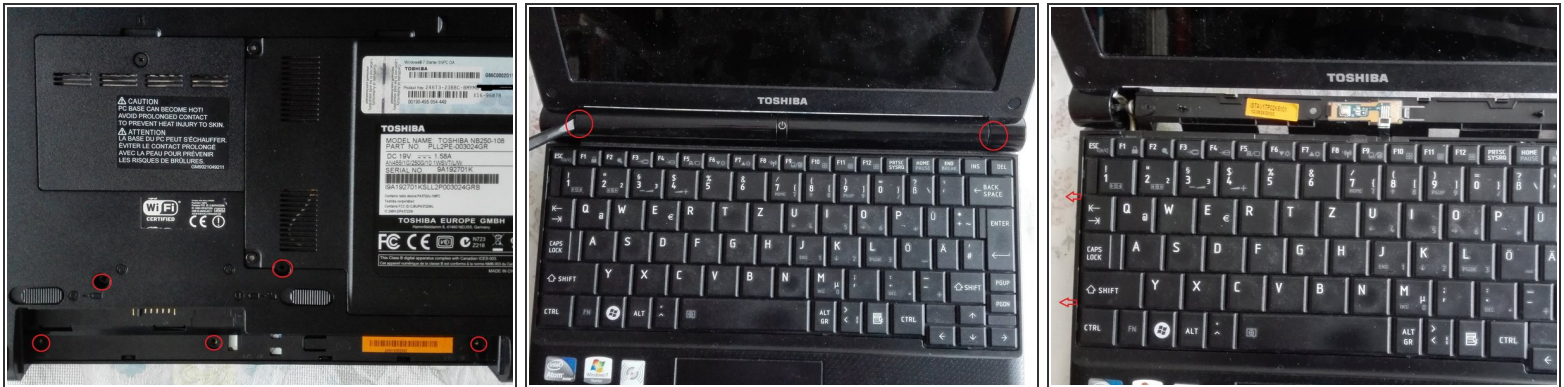
## Step 1 — Remove the battery



- Save your work.
- Turn off the computer. The LED Power must not light up anymore.
- ⚠ Disconnect all cables and devices connected to the computer.
- Close the screen and place the computer face down as shown in the picture.
- Slide the safety latch (on the left side of the picture) to the unlocked position (to the left) to activate the release.
- Slide the battery release (pictured on the right) to the right side and hold it to release the battery and remove the battery from the back of the computer.



## Step 2 — Remove keyboard



- Remove the 5 marked screws and then turn the device over and open the screen.
- First, we remove the cover of the Einschalteneinheit by levering each other with a spatula to the left and right.
- Grasp the keyboard at the top and on the left side start to lever out the keyboard with a spatula. Repeat this procedure on the right.

## Step 3 — Remove keyboard cable



**⚠** Gently push the keyboard towards the screen until the keyboard cable connector becomes visible.

- Hold the keyboard in this position with one hand and use the other hand and pointed tweezers to open the black retaining clips by sliding them in the direction of the ribbon cable.
- Now the ribbon cable can be pulled out of the holder.
- Place the keyboard securely on its work surface.

Repeat the steps in order to reassemble your device.