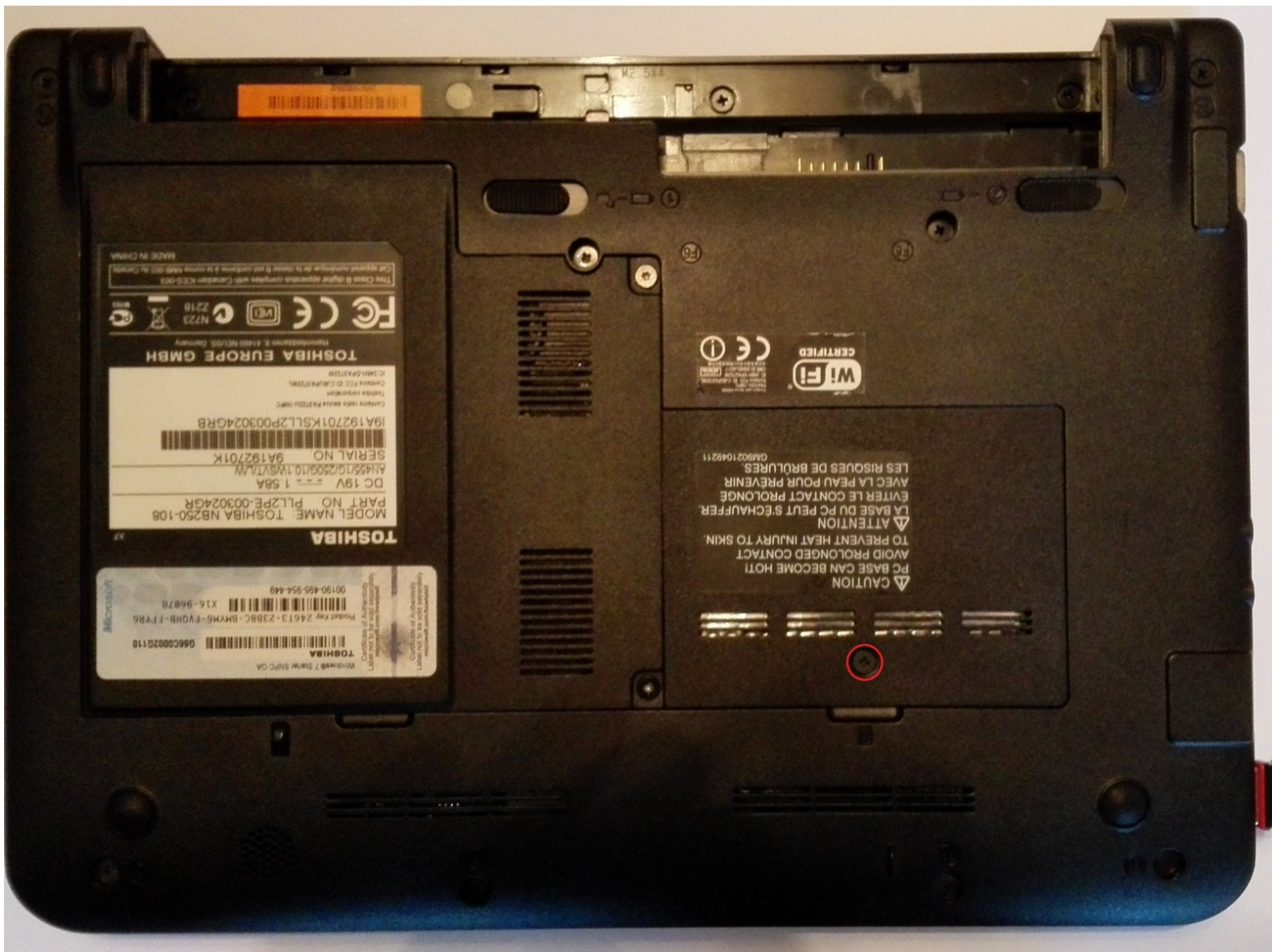




# Toshiba NB250-108 RAM Replacement

Removal and replacement of the RAM module

Written By: Guenter Hildebrandt



---

# INTRODUCTION

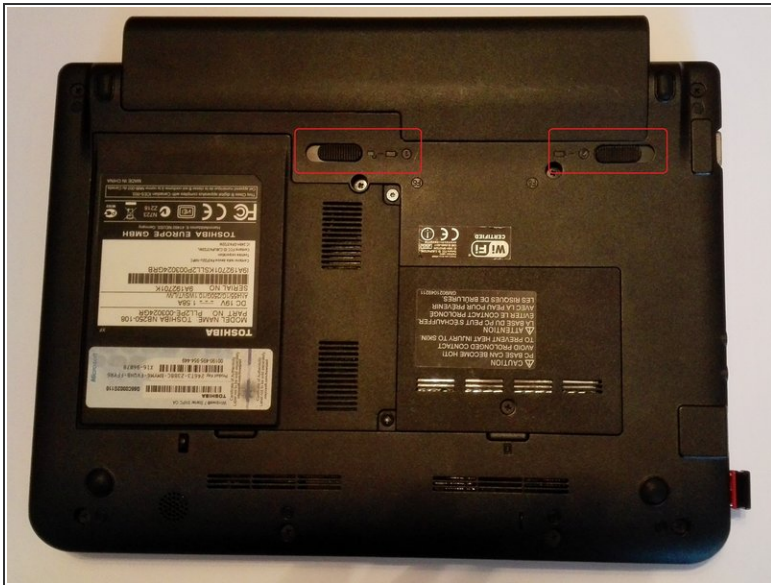
Removal and replacement of the RAM module

---

## TOOLS:

- [New Item](#) (1)
-

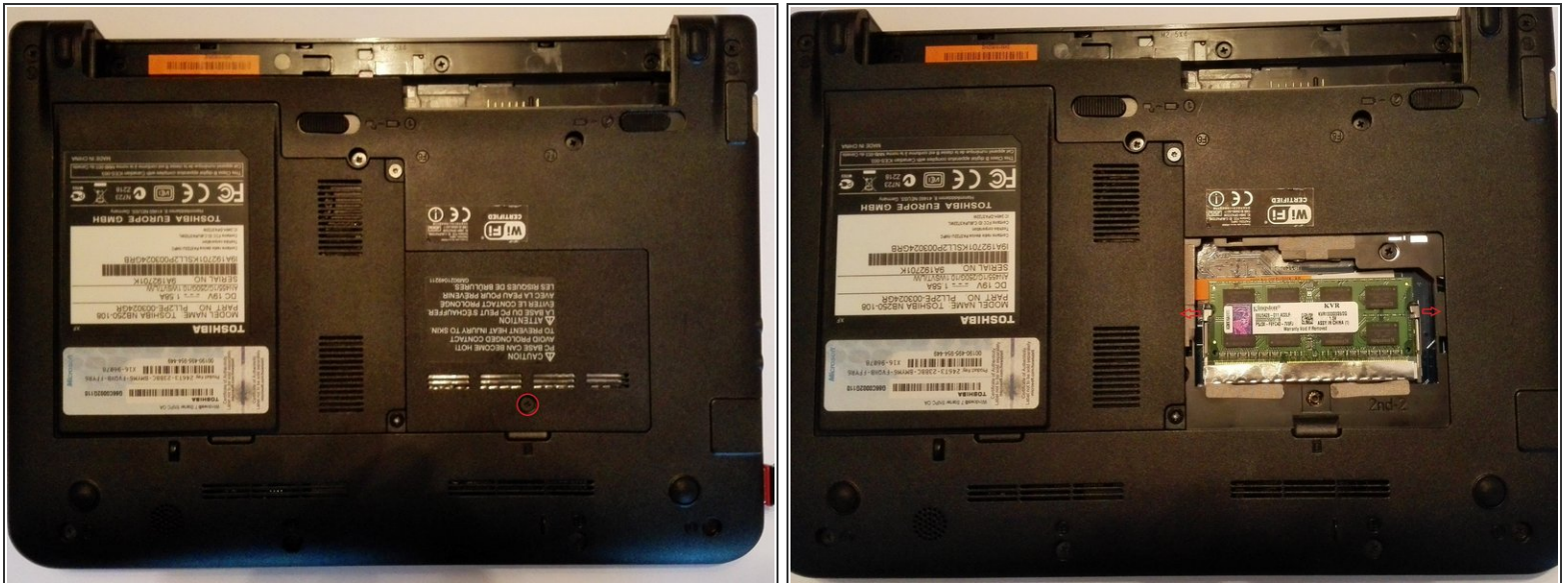
## Step 1 — Remove the battery



- Save your work.
- Turn off the computer. The LED Power must not light up anymore.
- ⚠ Disconnect all cables and devices connected to the computer.
- Close the screen and place the computer face down as shown in the picture.
- Slide the safety latch (on the left side of the picture) to the unlocked position (to the left) to activate the release.
- Slide the battery release (pictured on the right) to the right side and hold it to release the battery and remove the battery from the back of the computer.

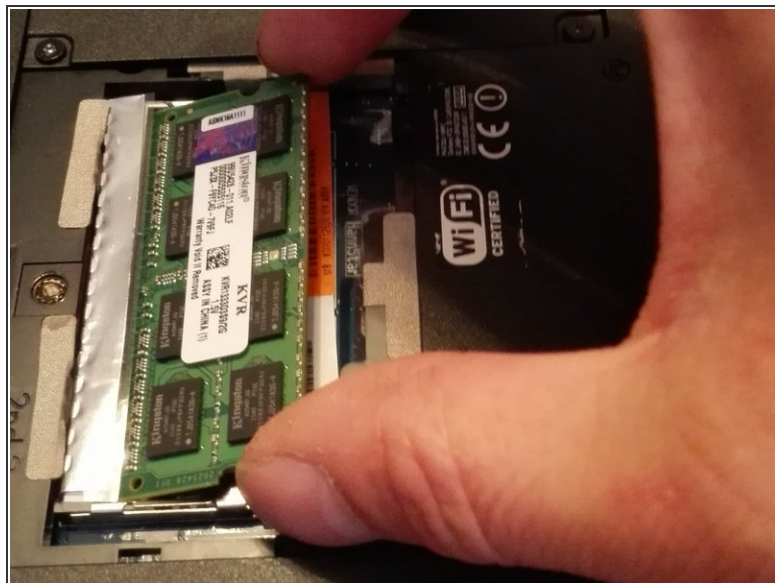


## Step 2 — Remove RAM cover



- Remove the screw with a Phillips # 1 screwdriver securing the memory module cover. To remove the cover, use the recess below the screw and lift the cover upwards.
- Now you see the RAM module in its socket. Carefully push the two metal clips outwards until the module is free and jumps upwards by about 30 degrees.

## Step 3 — Remove RAM



- Remove the RAM module by grasping it at the corners and pulling it to the right out of the socket.
- ⚠ Do not touch the gold contacts of the RAM module with your hand so as not to damage it.
- Place the RAM module securely on the work surface.

Repeat the steps in reverse order to reassemble your device.