



Toshiba NB255-N250 Memory Replacement

Steps to replace the memory on the Toshiba NB255-N250 Netbook

Written By: Charles Myrick





TOOLS:

- [Metal Spudger](#) (1)
- [64 Bit Driver Kit](#) (1)

PH1 Bit

Step 1 — Power off the Toshiba NB255-N250



 Before starting any repairs, make sure to power off your device.

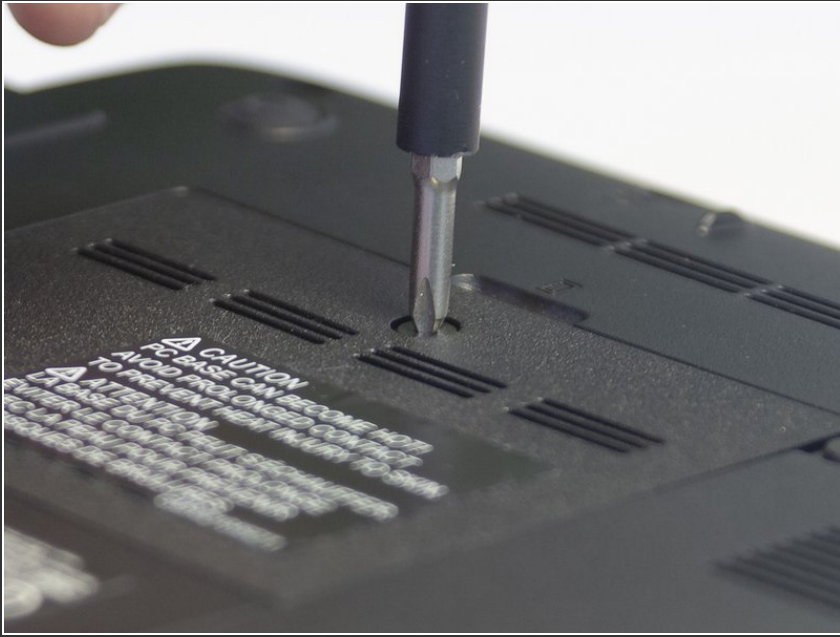
- To shut down the Toshiba NB255-N250, follow the instructions for your operating system or press and hold the power button until the screen turns off.

Step 2 — Remove the Battery



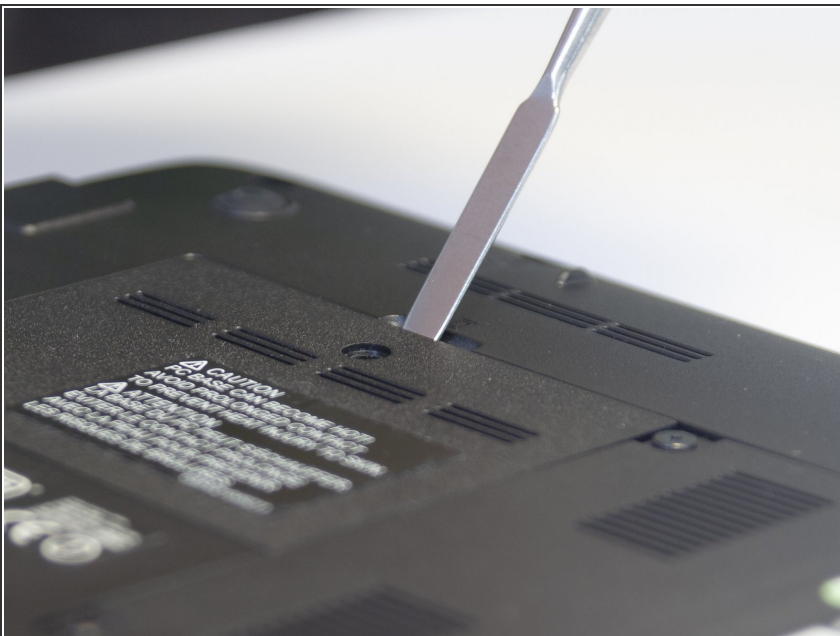
- Move the two battery retaining tabs to the opposite sides of the device, then pull the battery straight out the back of the device.

Step 3 — Remove The Memory Access Panel Screw



- Remove the PH1 screw from the memory access panel.
- ⚠ Unlike many other access cover screws on laptops, this screw is not captive.

Step 4 — Remove The Memory Access Panel



- Use a Metal Spudger or other opening tool to remove the memory access panel.

Step 5 — Remove Old Memory



- Remove the memory by moving the tabs on the left and right away from the ram.
- When fully opened, the memory will pop up at a 45 degree angle. Pull the memory straight out by the sides and away from the system.

To reassemble your device, follow these instructions in reverse order.