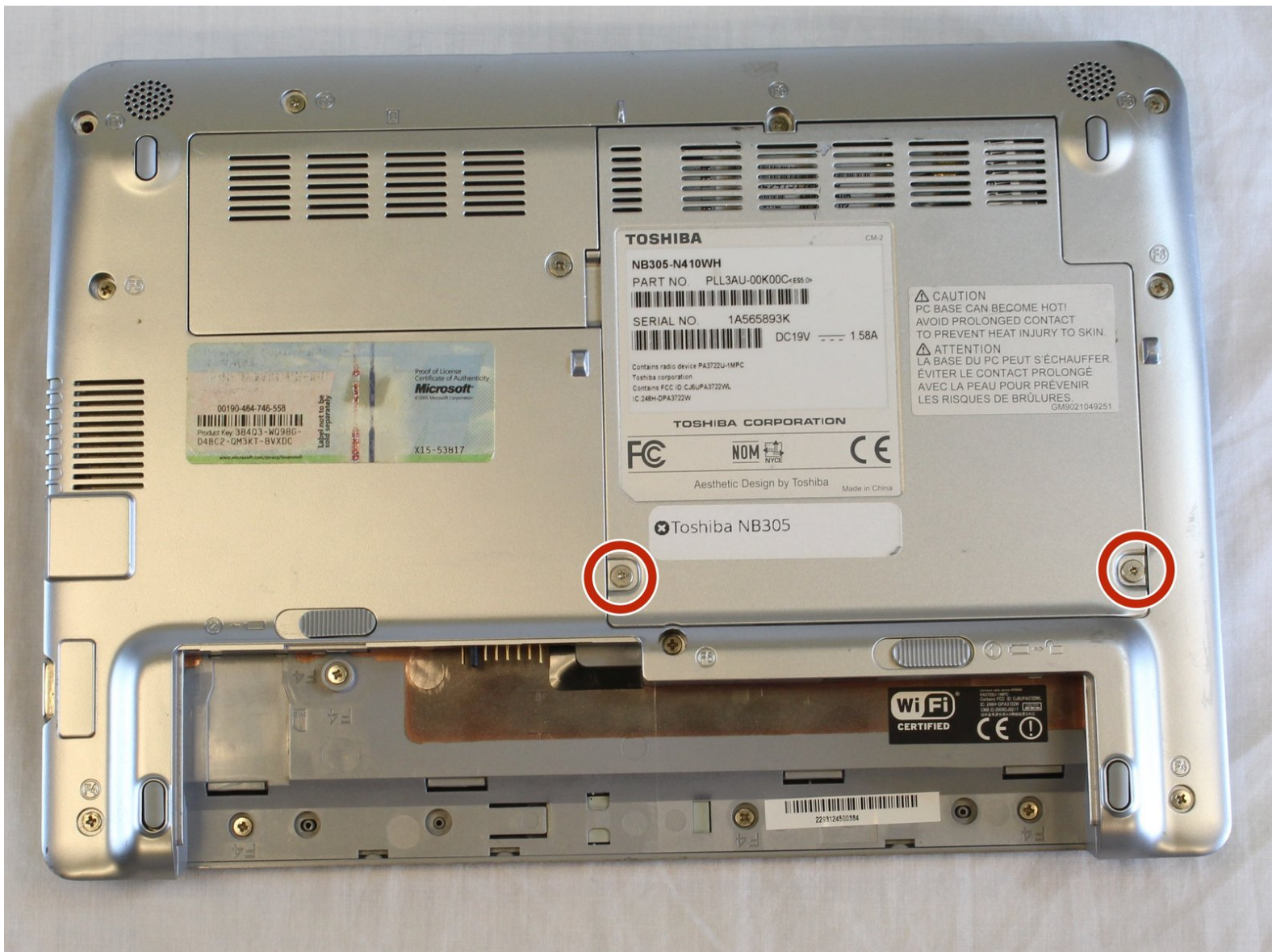




Toshiba NB305 Wifi Card Replacement

Replace your wifi card so that you can again roam the world wirelessly.

Written By: Mateo Fontana



INTRODUCTION

We will show you how to find and remove the wifi card. This is a simple procedure and only requires a few steps.

TOOLS:

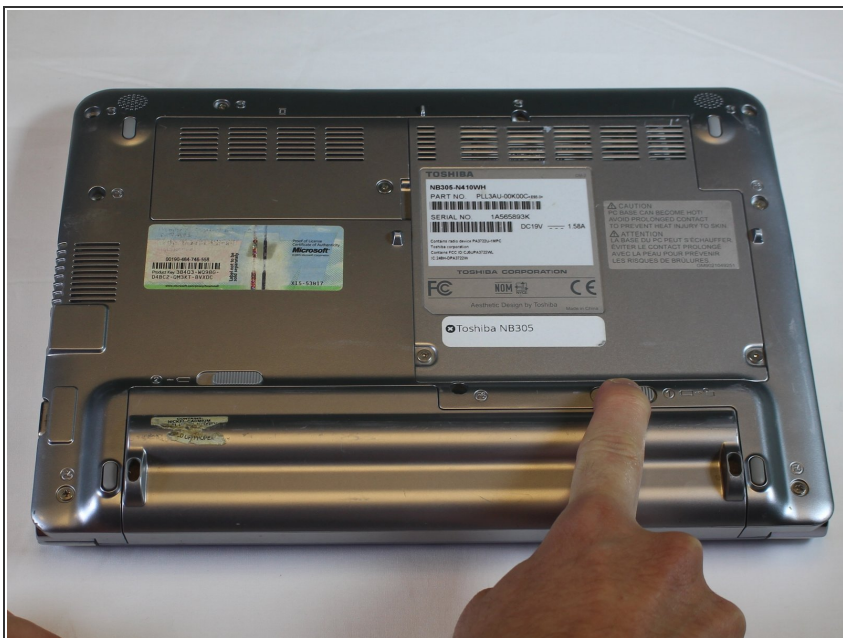
- [Phillips #0 Screwdriver](#) (1)
 - [T6 Torx Screwdriver](#) (1)
 - [Spudger](#) (1)
-

Step 1 — Battery



- Place the laptop upside down with the battery facing you.

Step 2



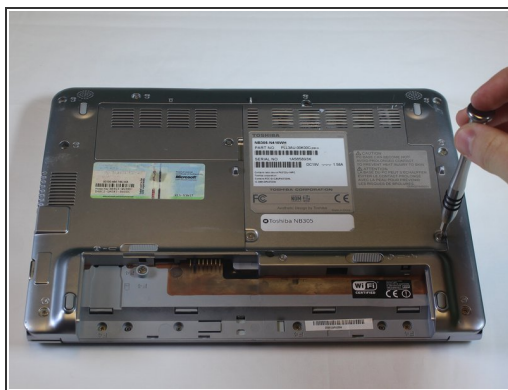
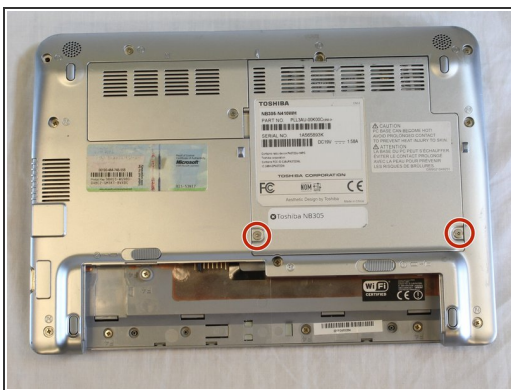
- Use your right hand to move latch 1 to the right to unlock the battery.

Step 3



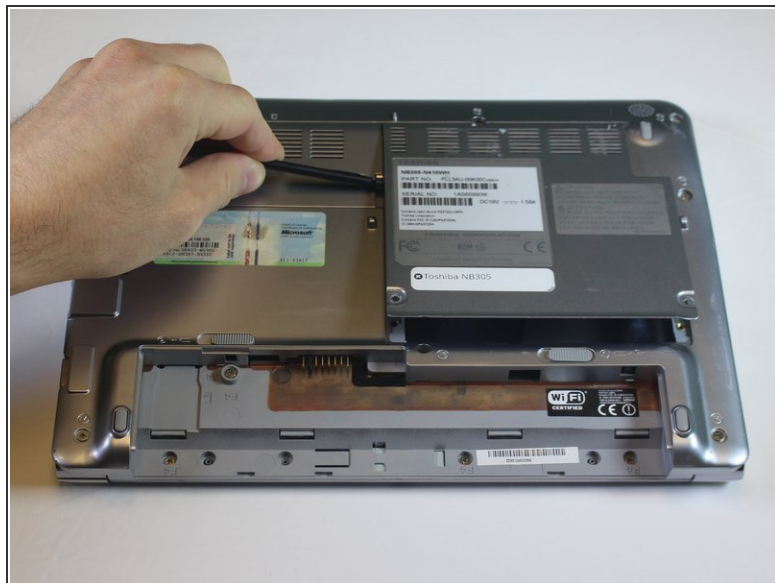
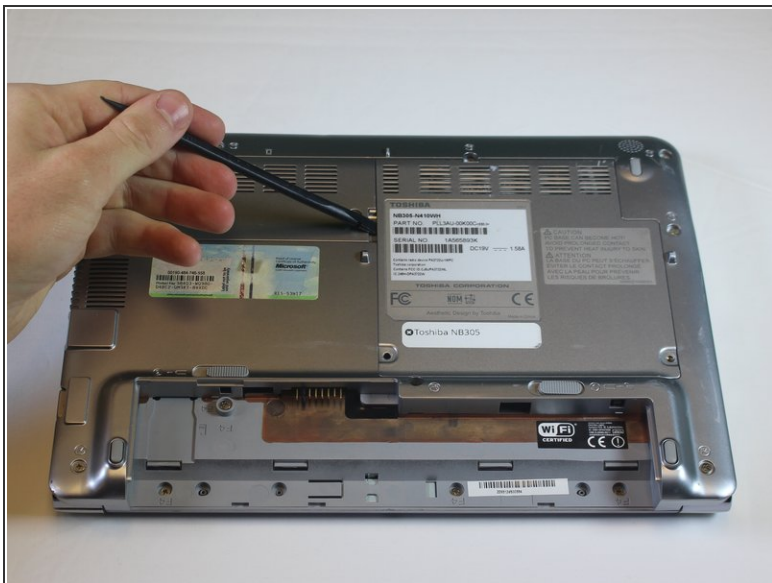
- Use your left hand to hold latch 2 to the left.
- Simultaneously take the battery out with your right hand.

Step 4 — Wifi Card



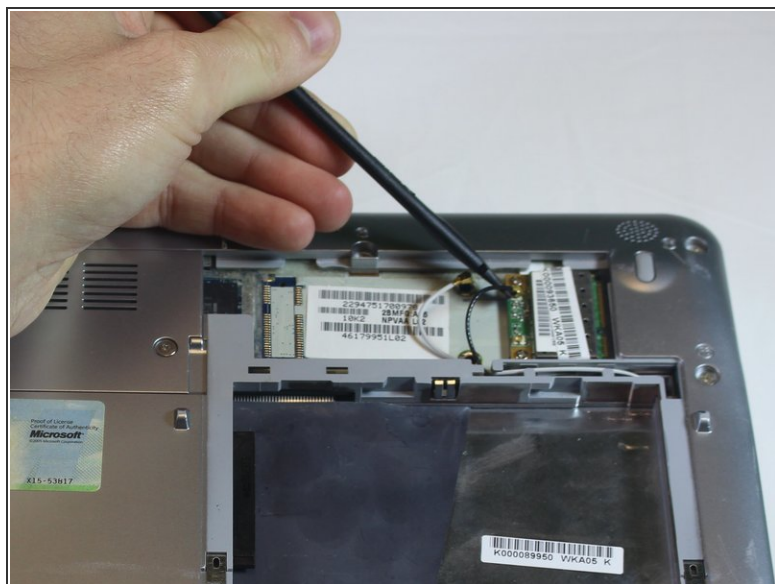
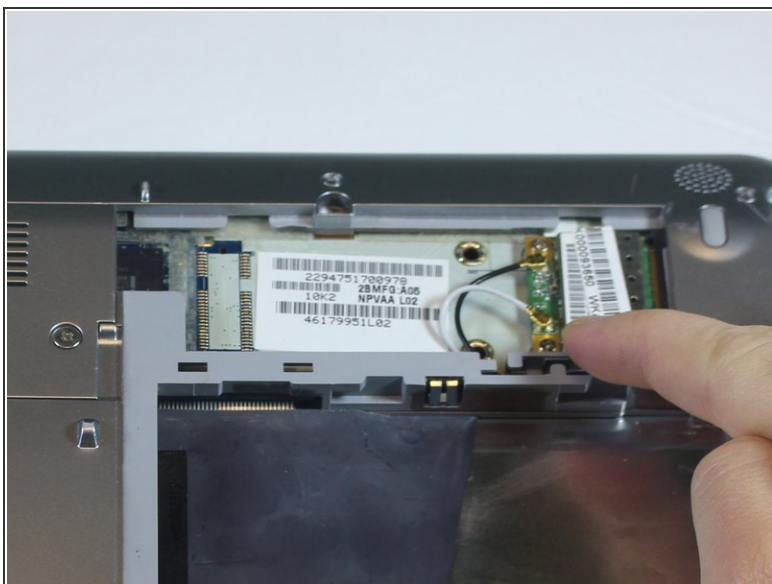
- Locate the two torx T-6 screws on the back of the laptop and remove them.
 - 6mm Torx T-6 Screws

Step 5



- Using a spudger pry the panel up.

Step 6



- Using a spudger pry up and off the two wire connections.
- ⓘ Note that the black wire is on the top of the card and the white is the bottom.

Step 7



- Remove the two Phillips 0 size screws on WIFI card.
- Once the screws are removed the WIFI card will raise up

Step 8



- Grip both sides of the wifi card with your hand.
- Lift up on the card and pull the card out of the slot

To reassemble your device, follow these instructions in reverse order.