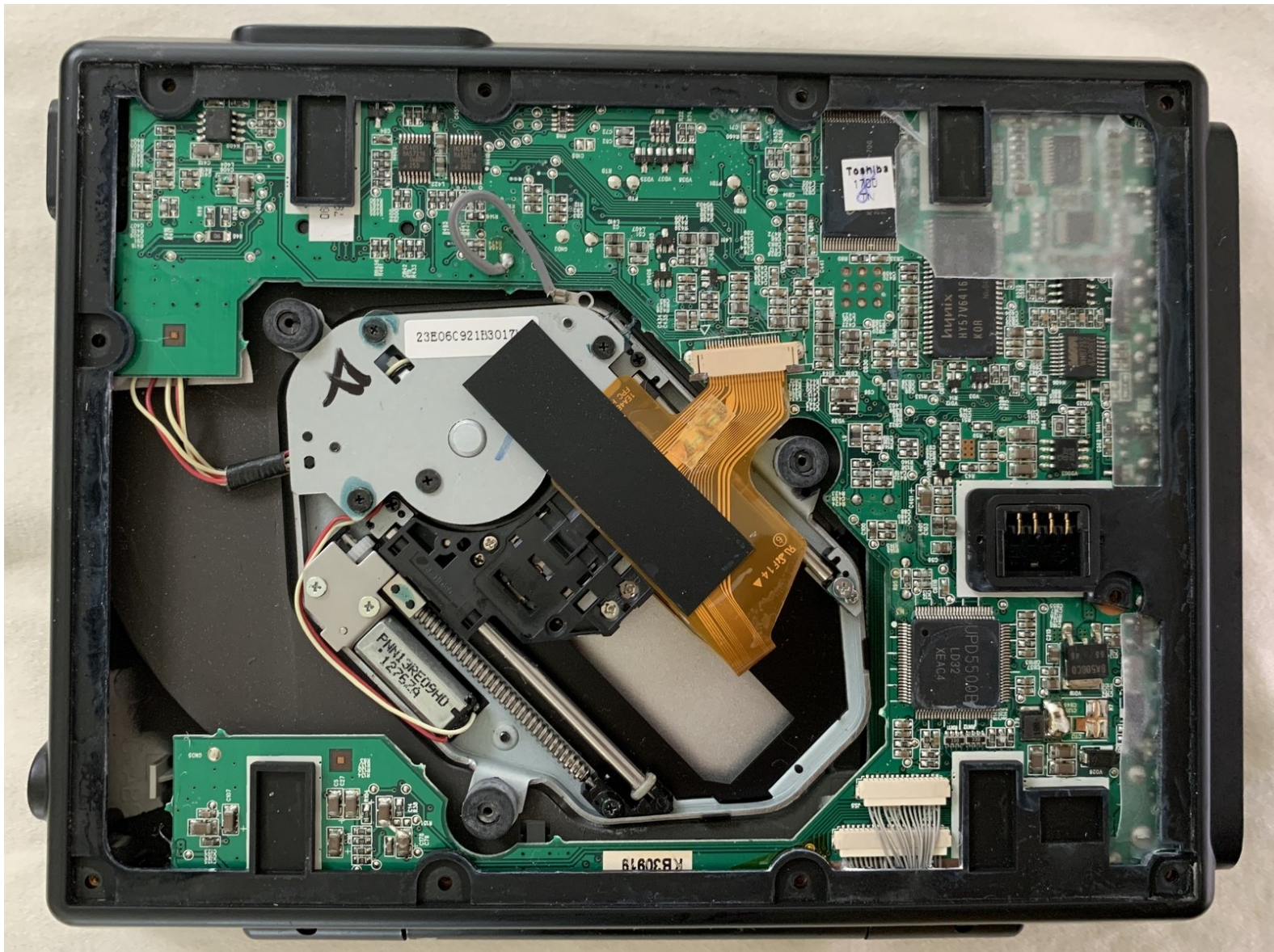




# Toshiba Portable DVD Player SD-P1700 DVD Drive Replacement

Use this guide to replace a DVD drive in a Toshiba portable DVD player.

Written By: Katarina Howald



## INTRODUCTION

Use this guide to replace the DVD drive on your Toshiba portable DVD player. Make sure your DVD player is turned off and not plugged into a power source.



### TOOLS:

- [Phillips #00 Screwdriver](#) (1)



### PARTS:

- [Toshiba DVD Drive](#) (1)



## Step 1 — DVD Drive



- Turn the DVD player upside down.
- Slide the lock switch to the side.
- Slide the battery pack toward the lock switch and off of the back case.

## Step 2



- Remove the following twelve screws:
  - Ten 7 mm Phillips #00 screws
  - Two 8 mm Phillips #00 screws

## Step 3



- Use your fingers to pull the back case away from the body of the DVD player.
- Remove the back case.

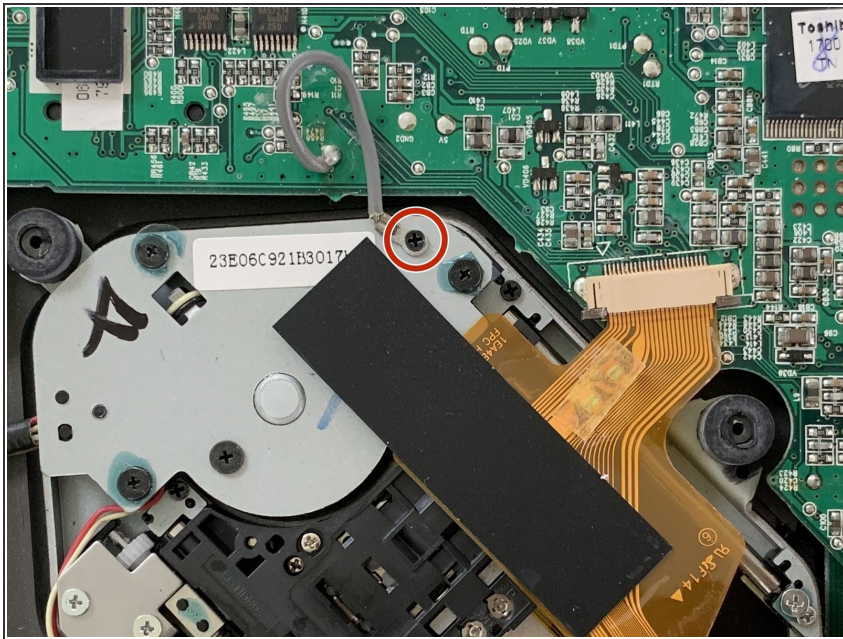
## Step 4



- Use your fingers to pull off the plastic sheet.

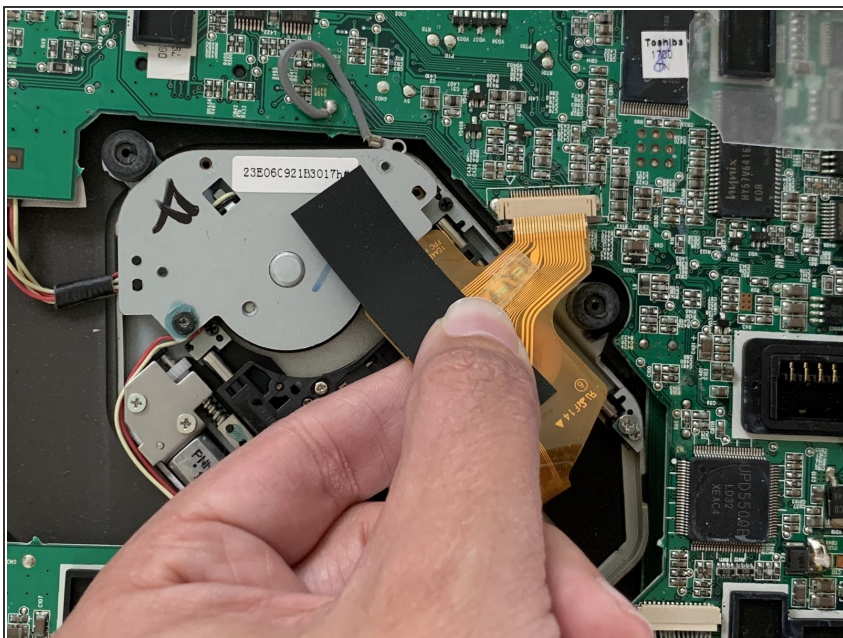


## Step 5



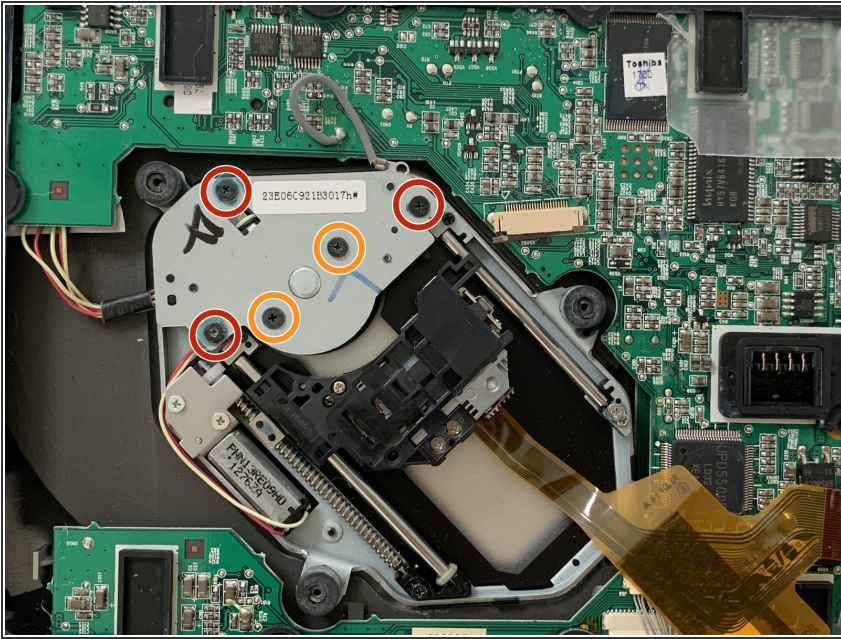
- Remove the following screw:
  - One 2 mm Phillips #00 screw
- Detach the gray wire.

## Step 6



- Disconnect the ribbon cable by pulling it straight out of the connector.

## Step 7



- Remove the following five screws:
  - Three 4 mm Phillips #00 screws
  - Two 2 mm Phillips #00 screws

## Step 8



- Remove three rubber stoppers.

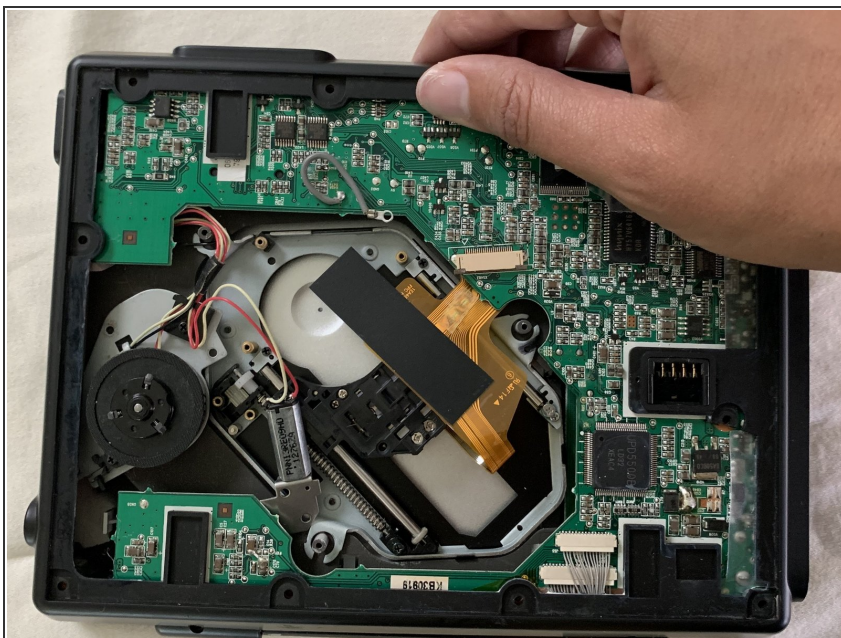


## Step 9



- Remove the following screws:
- Two 4mm Phillips #00 screws

## Step 10



- Use your fingers to pry the motherboard away from the upper case so you can access the DVD drive wires.

## Step 11



- Flip the DVD player over to access the drive wires.
- Pull the bundled cable away from the connector in the same direction the individual wires are running.

## Step 12



- Remove all of the DVD drive components from the case.

To reassemble your device, follow these instructions in reverse order.