



Toshiba Portege M300 Battery Replacement

This will demonstrate how to install a Toshiba Portege M300 battery.

Written By: Alison Wendt



INTRODUCTION

This guide will go through the steps needed to remove the laptop's battery.

Step 1 — Battery



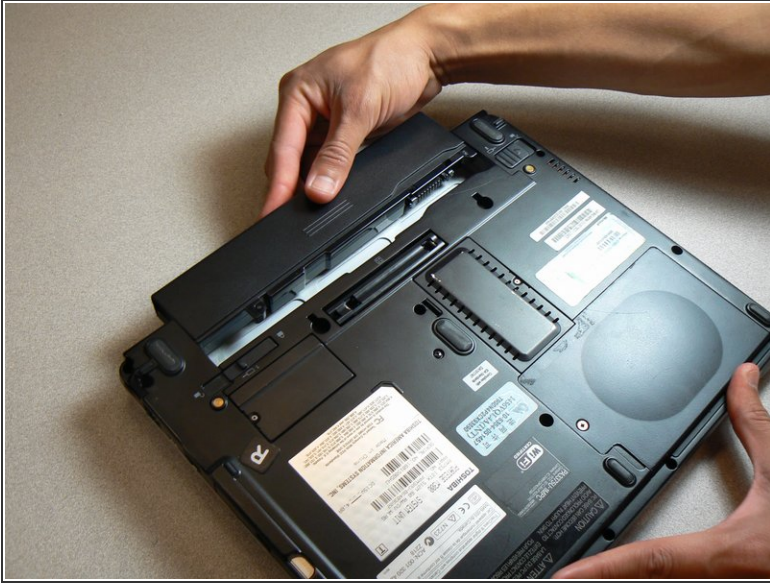
- Turn the computer over onto its back.

Step 2



- Slide the lock on the left side to the unlock position.
- Slide the lock on the right side to the unlock position until there is a clicking sound.

Step 3



- Remove the battery by sliding it out while both locks remain in the unlock position.

To reassemble your device, follow these instructions in reverse order.