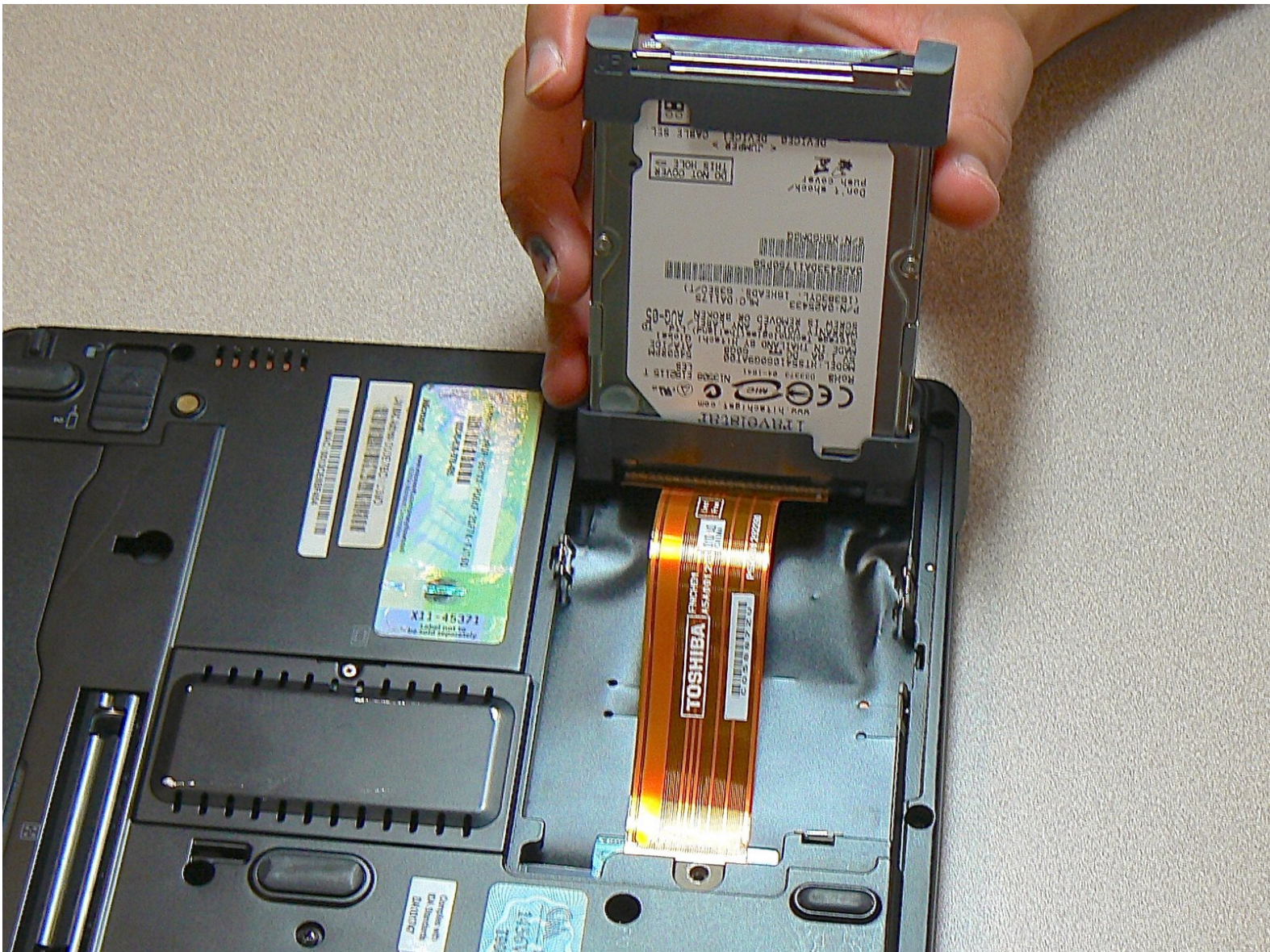




Toshiba Portege M300 Hard Drive Replacement

This will describe how to install a Toshiba Portege M300 hard drive.

Written By: Alison Wendt



INTRODUCTION

This guide will go through the steps needed to install a new hard drive.



TOOLS:

- [Phillips #1 Screwdriver](#) (1)
-

Step 1 — Battery



- Turn the computer over onto its back.

Step 2



- Slide the lock on the left side to the unlock position.
- Slide the lock on the right side to the unlock position until there is a clicking sound.

Step 3



- Remove the battery by sliding it out while both locks remain in the unlock position.

Step 4 — Hard Drive



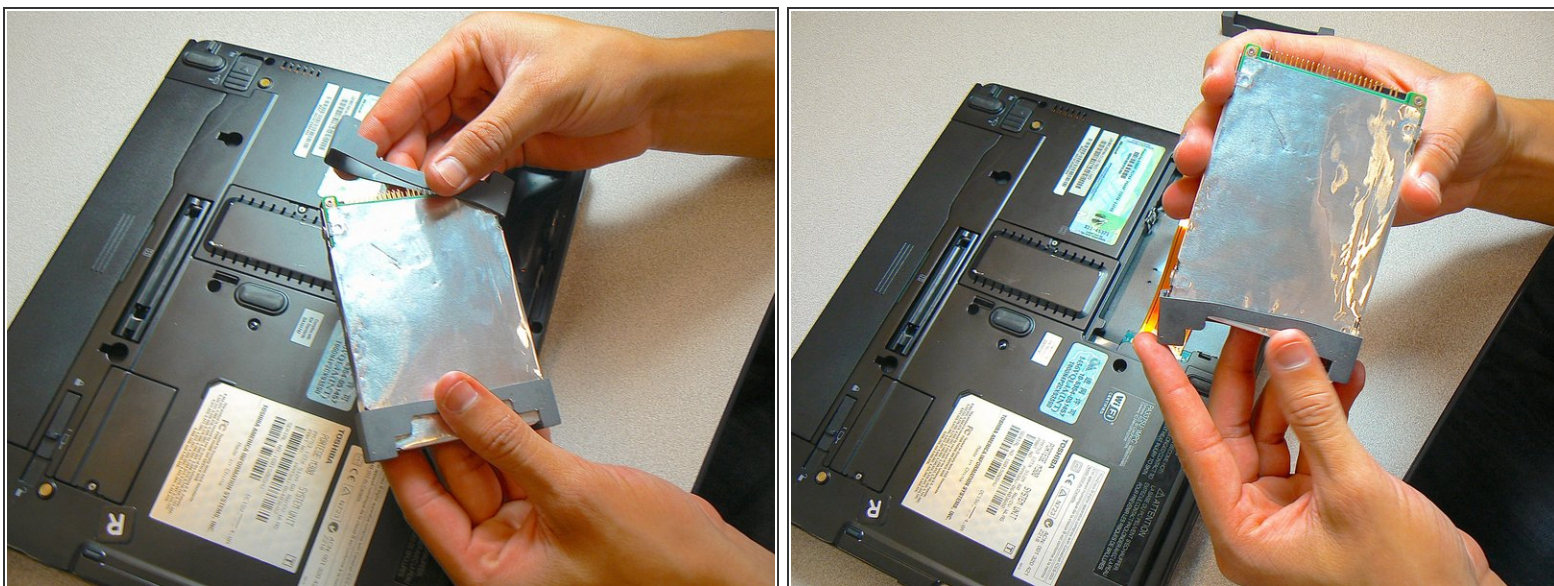
- Turn the computer over onto the back.
- Use a Phillips head screwdriver to remove the screw from the hard drive cover.
- One 8.5 mm fine thread screw.
- Lift and remove the cover.

Step 5



- Carefully remove the hard drive from the IDE cable by pulling on the black connector (do not pull the orange cable).

Step 6



- Remove the two gray rubber covers from both ends of the hard drive.

To reassemble your device, follow these instructions in reverse order.