



Toshiba Portege M300 RAM Replacement

This guide will demonstrate how to install Toshiba Portege M300 RAM.

Written By: Alison Wendt



INTRODUCTION

This guide will go through the steps needed to install the laptop's RAM.



TOOLS:

- [Phillips #1 Screwdriver](#) (1)
- [iFixit Opening Tools](#) (1)



PARTS:

- [PC2700 256 MB RAM Chip](#) (1)
- [PC2700 512 MB RAM Chip](#) (1)
- [PC2700 1 GB RAM Chip](#) (1)

Step 1 — Battery



- Turn the computer over onto its back.

Step 2



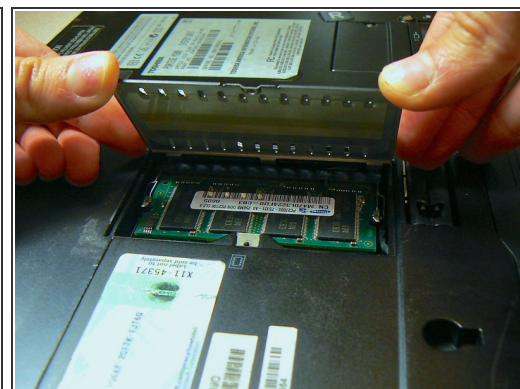
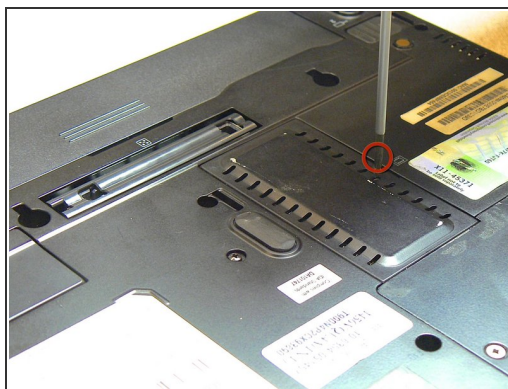
- Slide the lock on the left side to the unlock position.
- Slide the lock on the right side to the unlock position until there is a clicking sound.

Step 3



- Remove the battery by sliding it out while both locks remain in the unlock position.

Step 4 — RAM



- Turn the computer over onto the back.
- Use a Phillips head screwdriver to remove the screw holding the RAM cover in place, and lift the cover.
- One 4.0 mm coarse thread screw.

Step 5



- Use a plastic opening tool to open the silver flaps on either side of the RAM.
- Once both flaps are released, the RAM should pop up at an angle.

Step 6



- Grasp both sides of the RAM and pull to remove it.

To reassemble your device, follow these instructions in reverse order.