



# Toshiba Portege M300 Wireless Card Replacement

This will demonstrate how to replace a wireless card in a Toshiba Portege M300.

Written By: Alison Wendt



---

# INTRODUCTION

This guide will go through the steps needed to install a new wireless card.



## TOOLS:

- [iFixit Opening Tools](#) (1)
  - [Phillips #0 Screwdriver](#) (1)
  - [Phillips #1 Screwdriver](#) (1)
-



## Step 1 — Battery



- Turn the computer over onto its back.

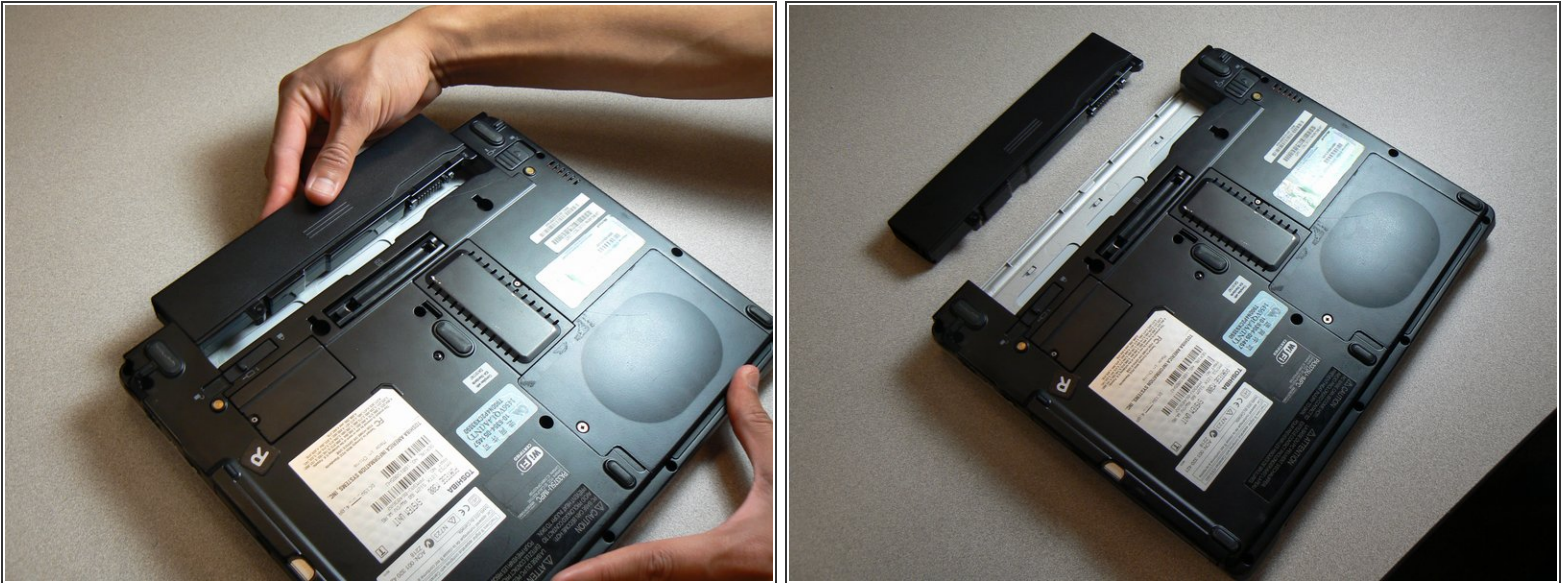
## Step 2



- Slide the lock on the left side to the unlock position.
- Slide the lock on the right side to the unlock position until there is a clicking sound.

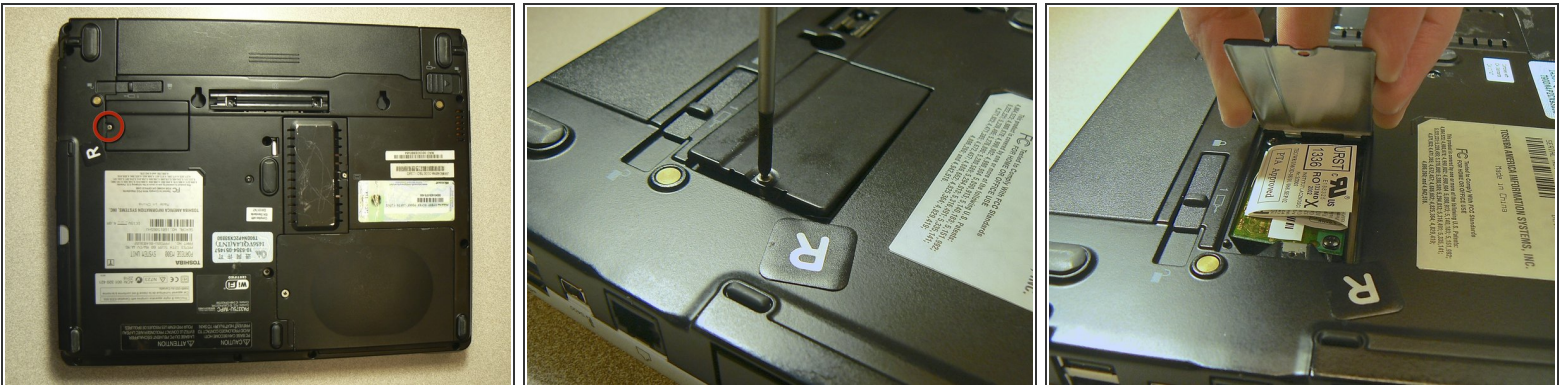


### Step 3



- Remove the battery by sliding it out while both locks remain in the unlock position.

### Step 4 — Wireless Card



- Turn the computer onto the back.
- Remove the Phillips #0 screw that secures the cover to the rest of the device.
- One 5.1 mm coarse thread screw.
- Pull the cover forward to release it.

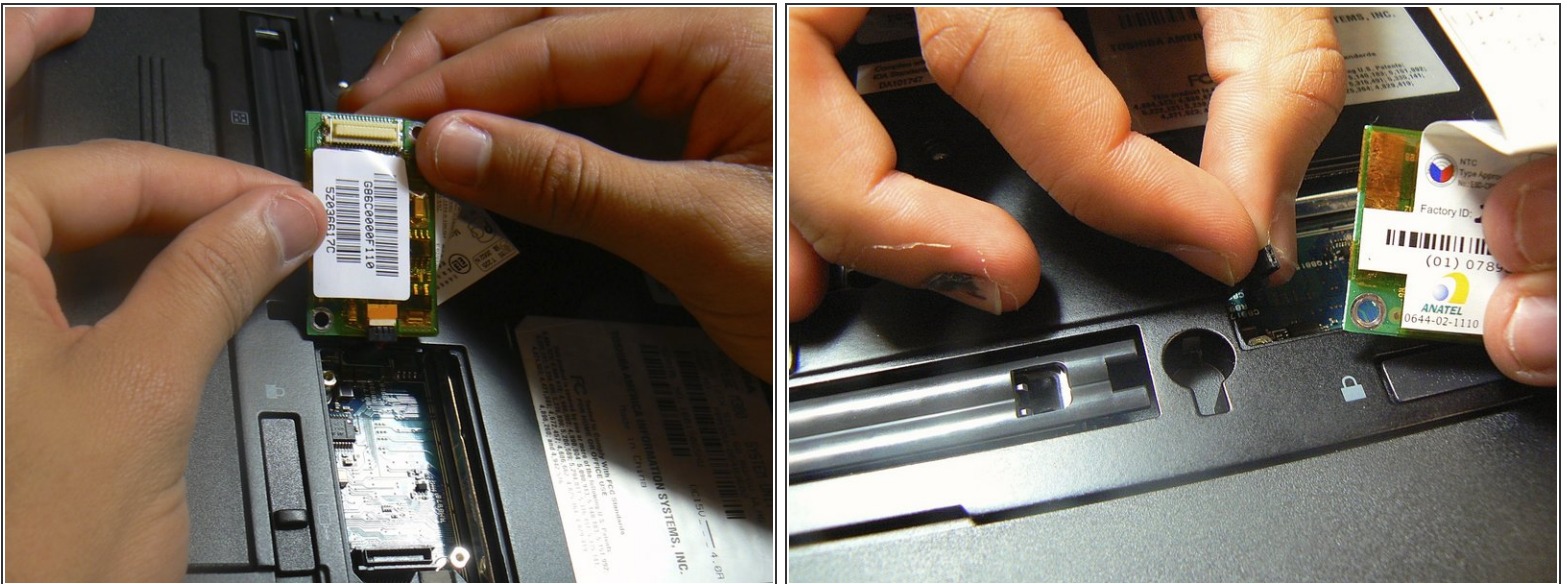


## Step 5



- Use a Phillips #1 screwdriver to remove the two screws on opposite corners of the wireless card.
- Two 4.0 mm coarse thread screws.
- Use a plastic opening tool to gently lift the wireless card out while leaving the wire connected.

## Step 6



- Hold the edges of the wireless card and carefully disconnect the black 3 pin connector.

To reassemble your device, follow these instructions in reverse order.