



Toshiba Portege M400 Motherboard Replacement

This guide will provide the steps to remove and replace the motherboard of this laptop.

Written By: Dustin

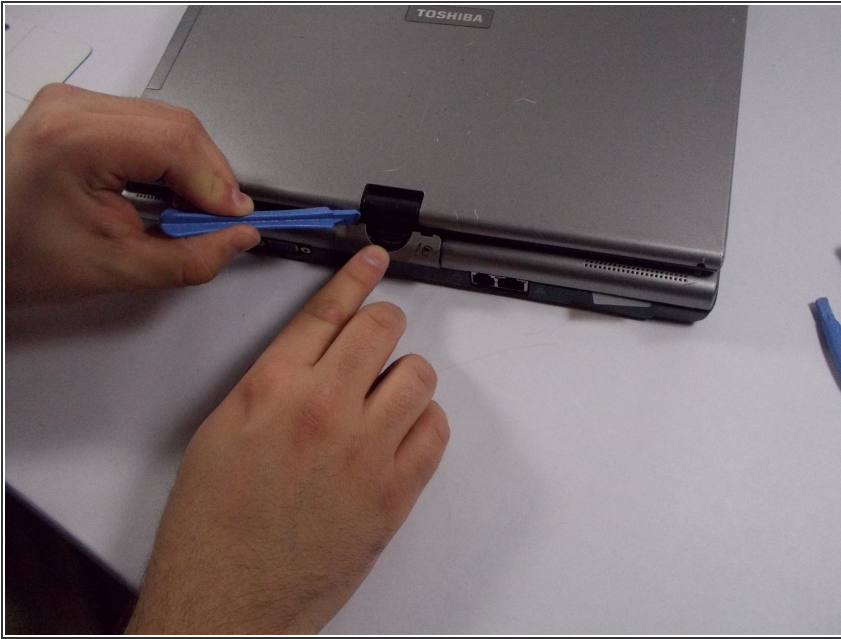




TOOLS:

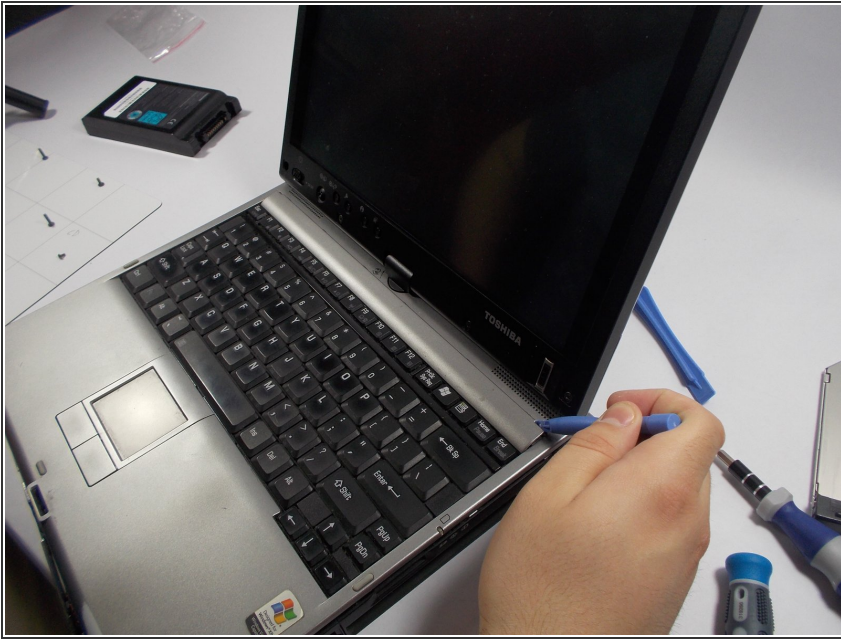
- [iFixit Opening Tools](#) (1)
 - [Phillips #1 Screwdriver](#) (1)
-

Step 1 — Motherboard



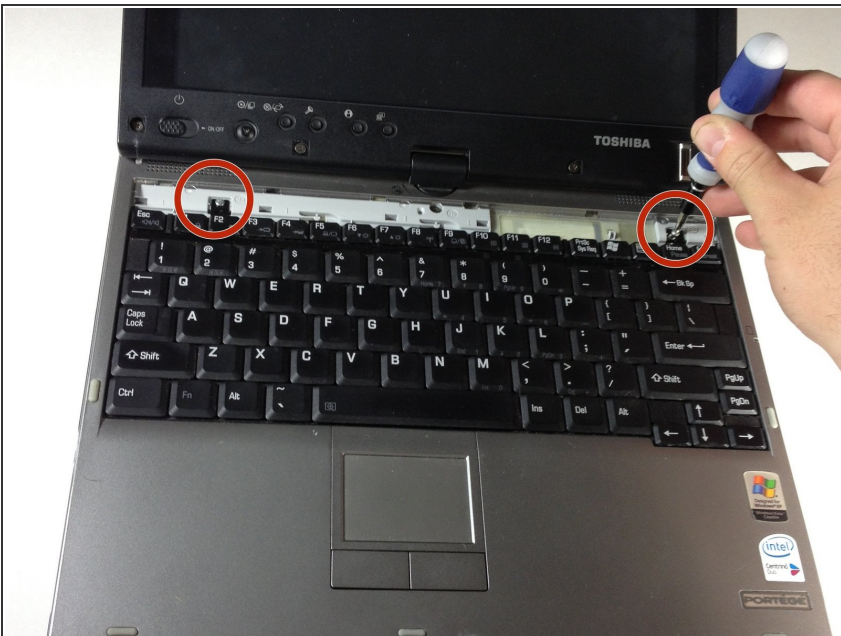
- Using the plastic opening tool, remove the plastic hinge cover on the back of the laptop. Use caution not to damage this plastic cover.

Step 2



- Using the plastic opening tool, remove the plastic cover directly above the keyboard. Make sure to start from the corners of the plastic cover.

Step 3



- Using the #1 Phillips head screwdriver, remove the two 3.8mm screws.

Step 4



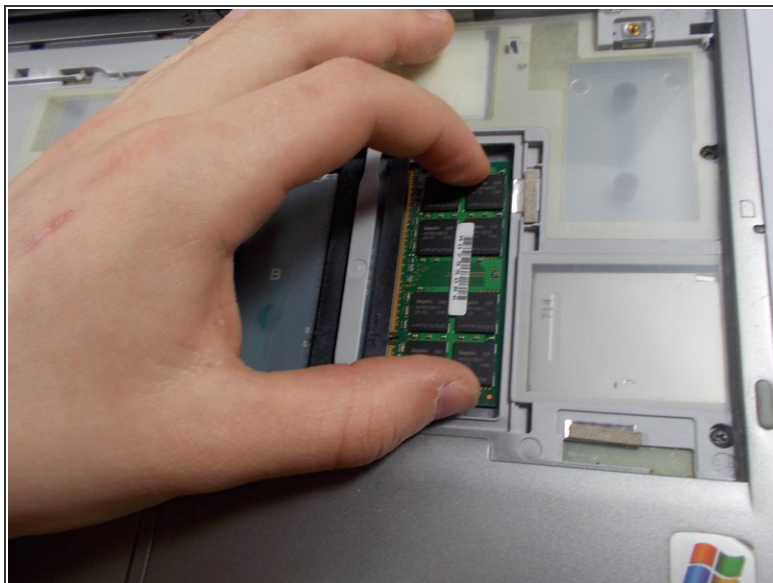
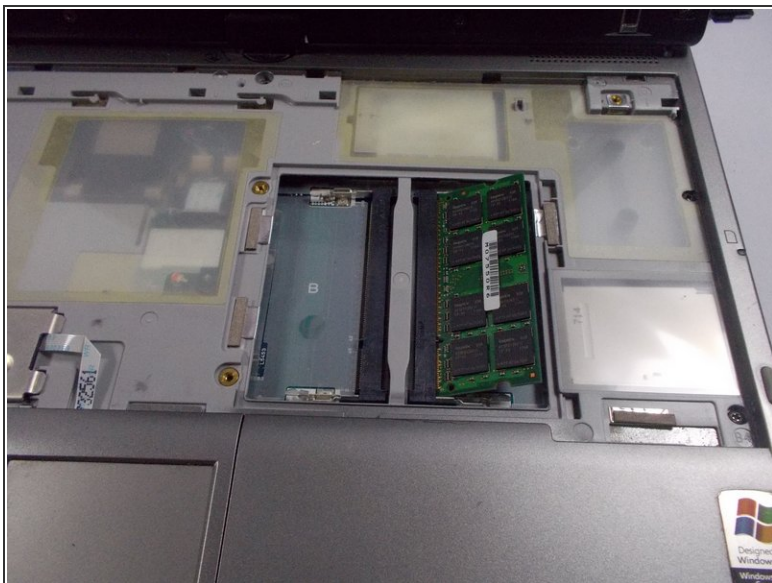
- Remove the keyboard, make sure you gently remove any ribbon cables holding it to the rest of the computer. Bending or crimping a ribbon cable can break the device.

Step 5



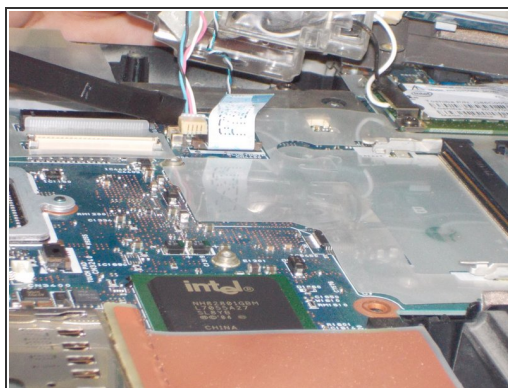
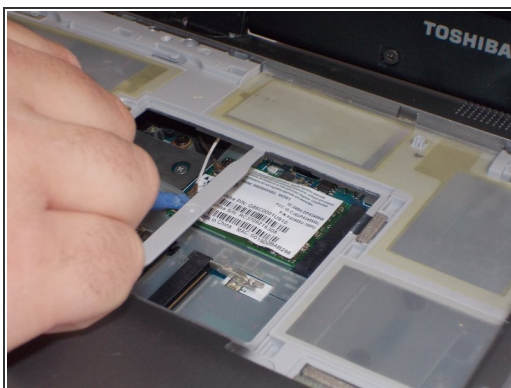
- Use a small phillips screwdriver to remove both metal shields as depicted.

Step 6



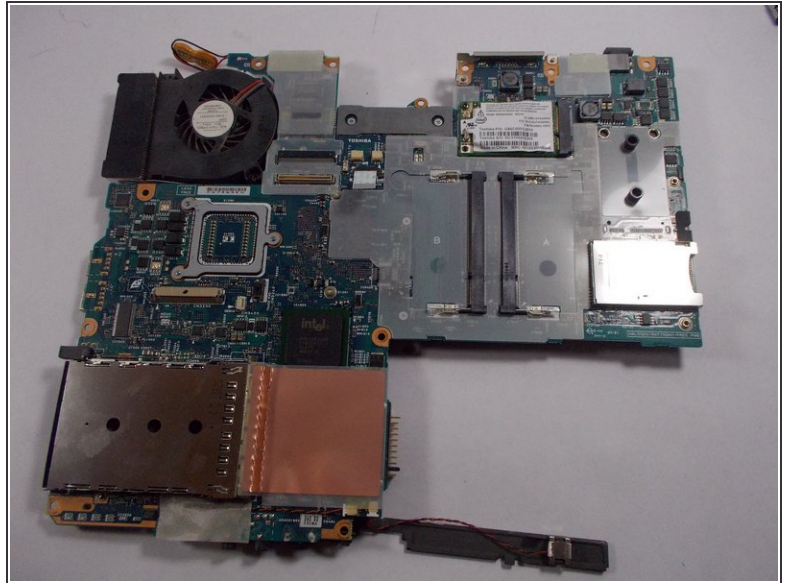
- After removing the second metal covering you will remove the RAM compartment.
- Simply pull apart the metal fasteners on the side; the RAM should pop out for removal.

Step 7



- Disconnect the wire from the exposed wireless card.
- Pry open the top of the laptop and gently remove and disconnect the wires as shown.

Step 8



- Remove the screws attaching the motherboard to the plastic housing.
- Lift off the motherboard. Once it is free of screws and you're done!

To reassemble your device, follow these instructions in reverse order.