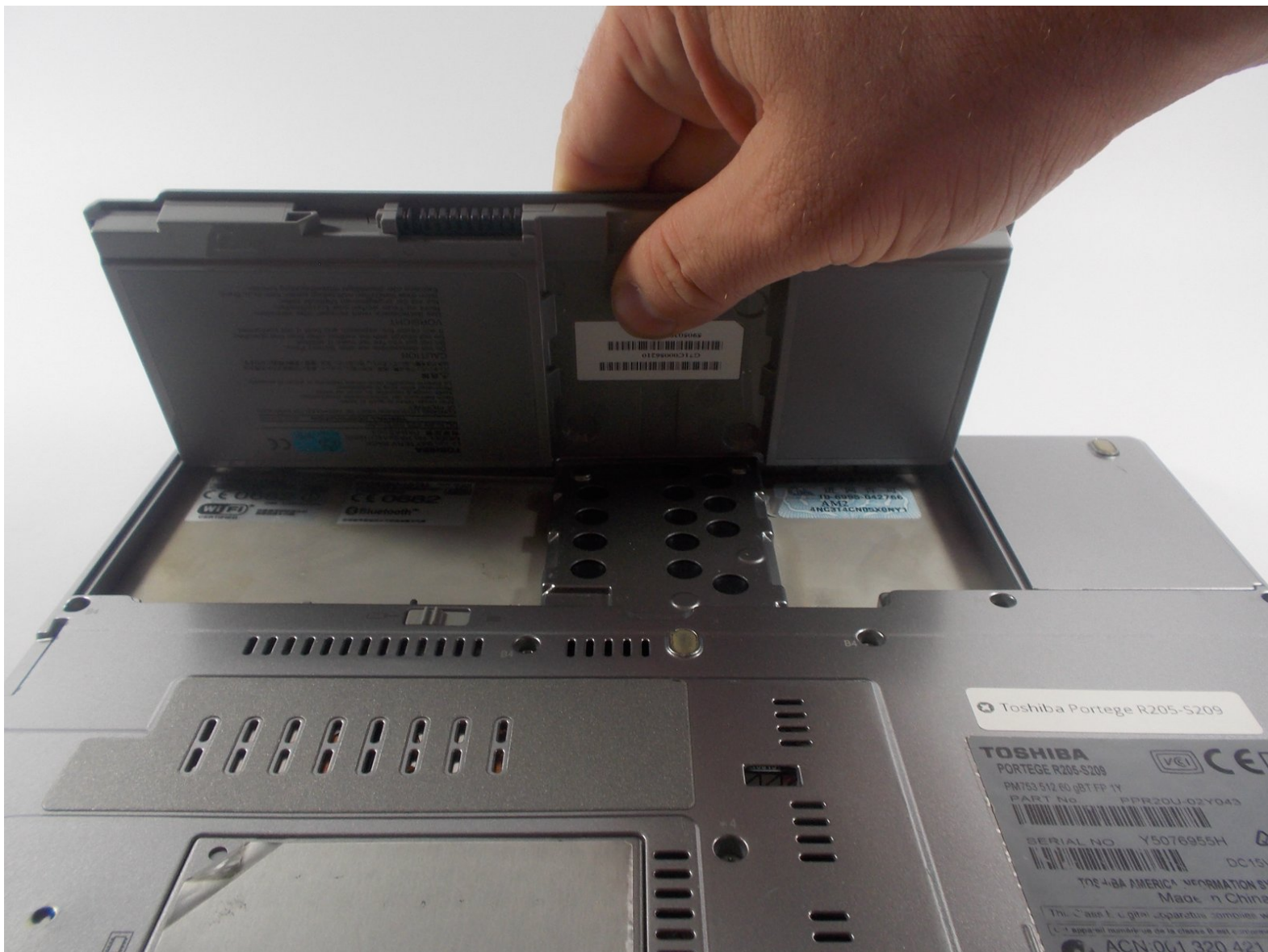




Toshiba Portege R205-S209 Battery Replacement

If your laptop's battery is dead or malfunctioning, this guide will walk you through replacing it.

Written By: Leah Catania



INTRODUCTION

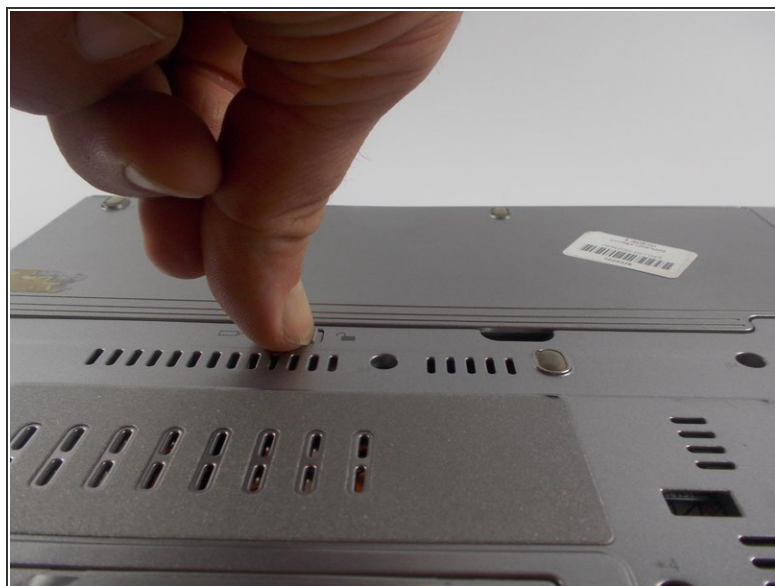
You may need to replace your laptop's battery if it is not holding a charge anymore, or not charging at all. To replace the battery on the Toshiba Portege laptop, no tools are necessary, just your own fingers!

Step 1 — Battery



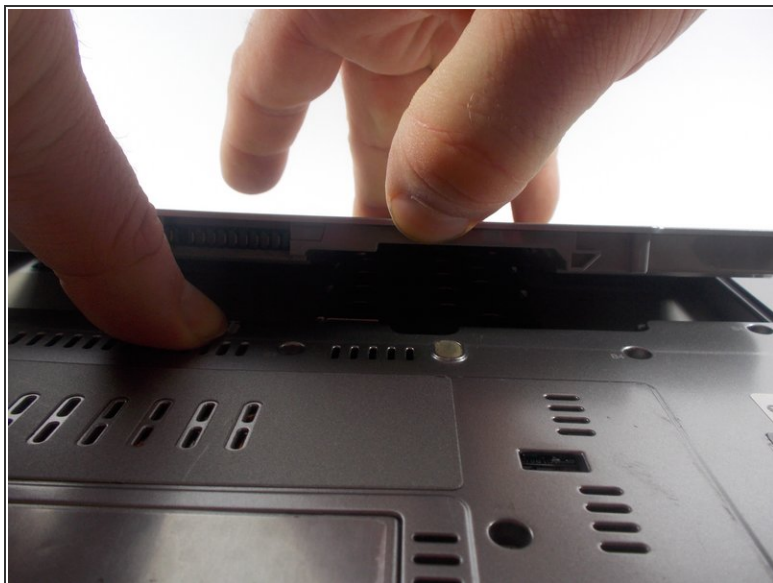
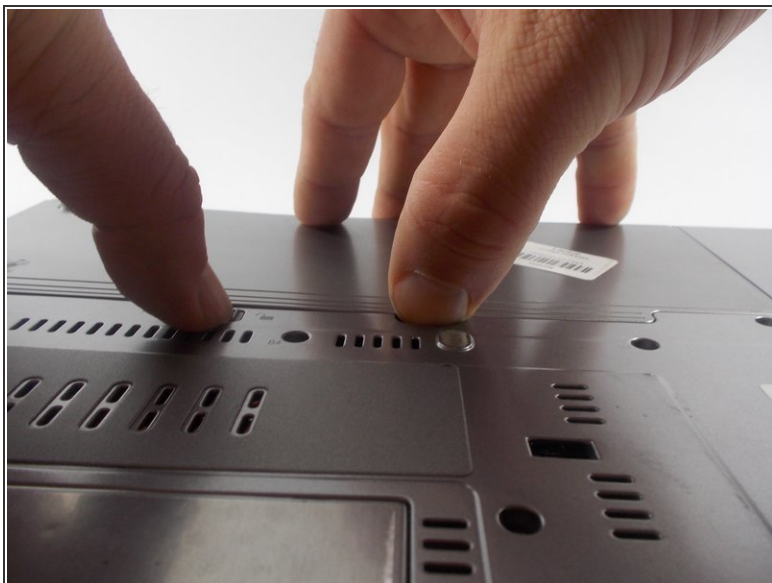
- Flip the laptop over. Keep the front end facing away from you, so the battery appears at the top.

Step 2



- Slide the locking mechanism to the right and hold.

Step 3



- While holding the locking mechanism to the right, insert your finger into the tab and lift up.

Step 4



- Remove battery by lifting upward.

To reassemble your device, follow these instructions in reverse order.