



Toshiba Portege R205-S209 RAM Replacement

The RAM (Random Access Memory) is a quick and easy fix taking only a couple of minutes.

Written By: Jason Sizen



INTRODUCTION

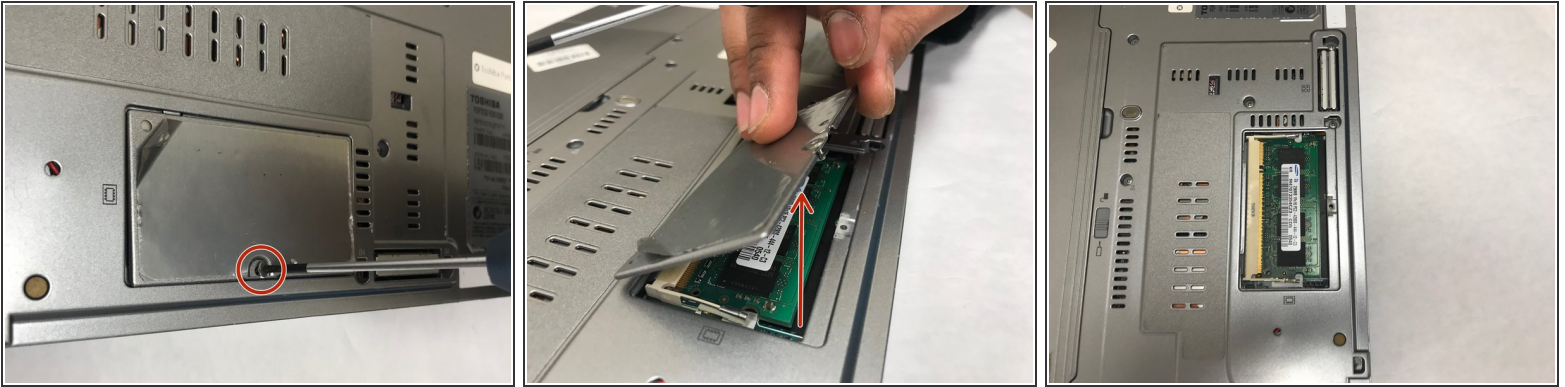
Faulty RAM may start to become noticeable over the years as your computer tends to slow down, luckily this quick fix will provide a significant increase in computing power.



TOOLS:

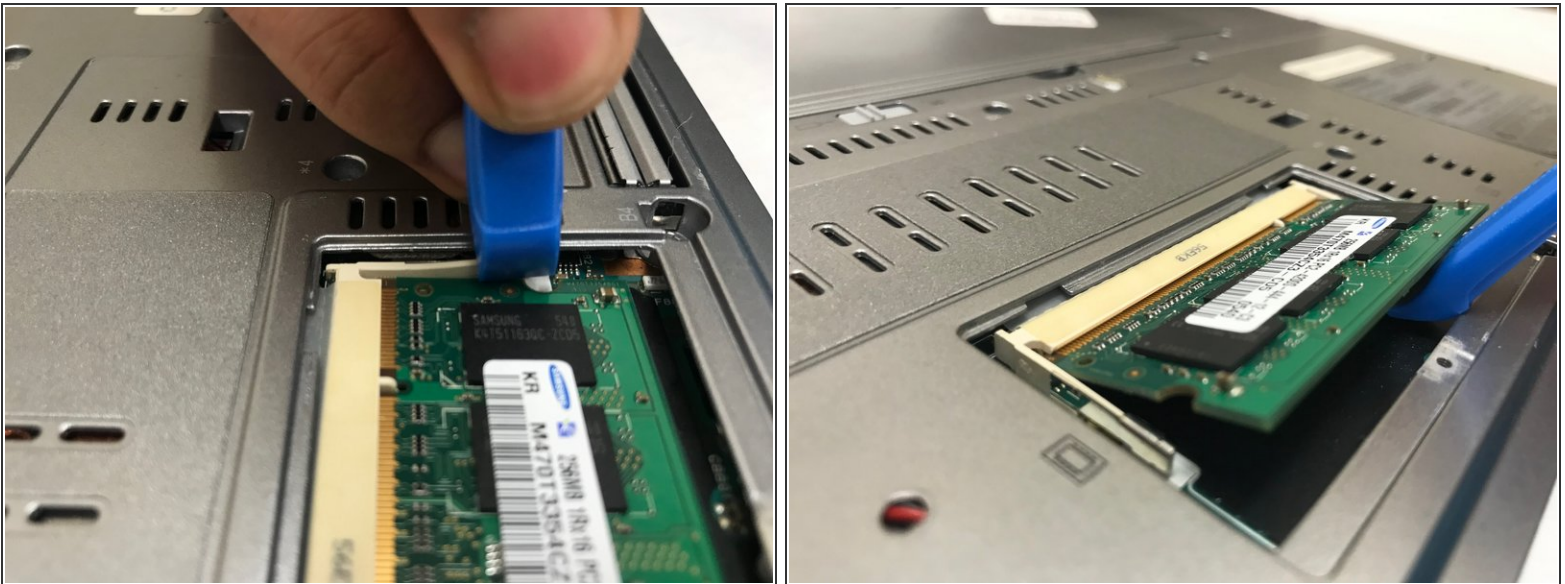
- [iFixit Opening Tools](#) (1)
 - [Phillips #00 Screwdriver](#) (1)
-

Step 1 — RAM



- Remove the single Phillips screw that connects the small plate to the underneath of the laptop. Lift the plate out to expose the RAM stick.

Step 2



- Push back the two silver clips that attach the RAM to the motherboard. The RAM should lift out gently. Make sure when inputting a new RAM stick that the proper orientation is kept as it only goes in one direction.

To reassemble your device, follow these instructions in reverse order.