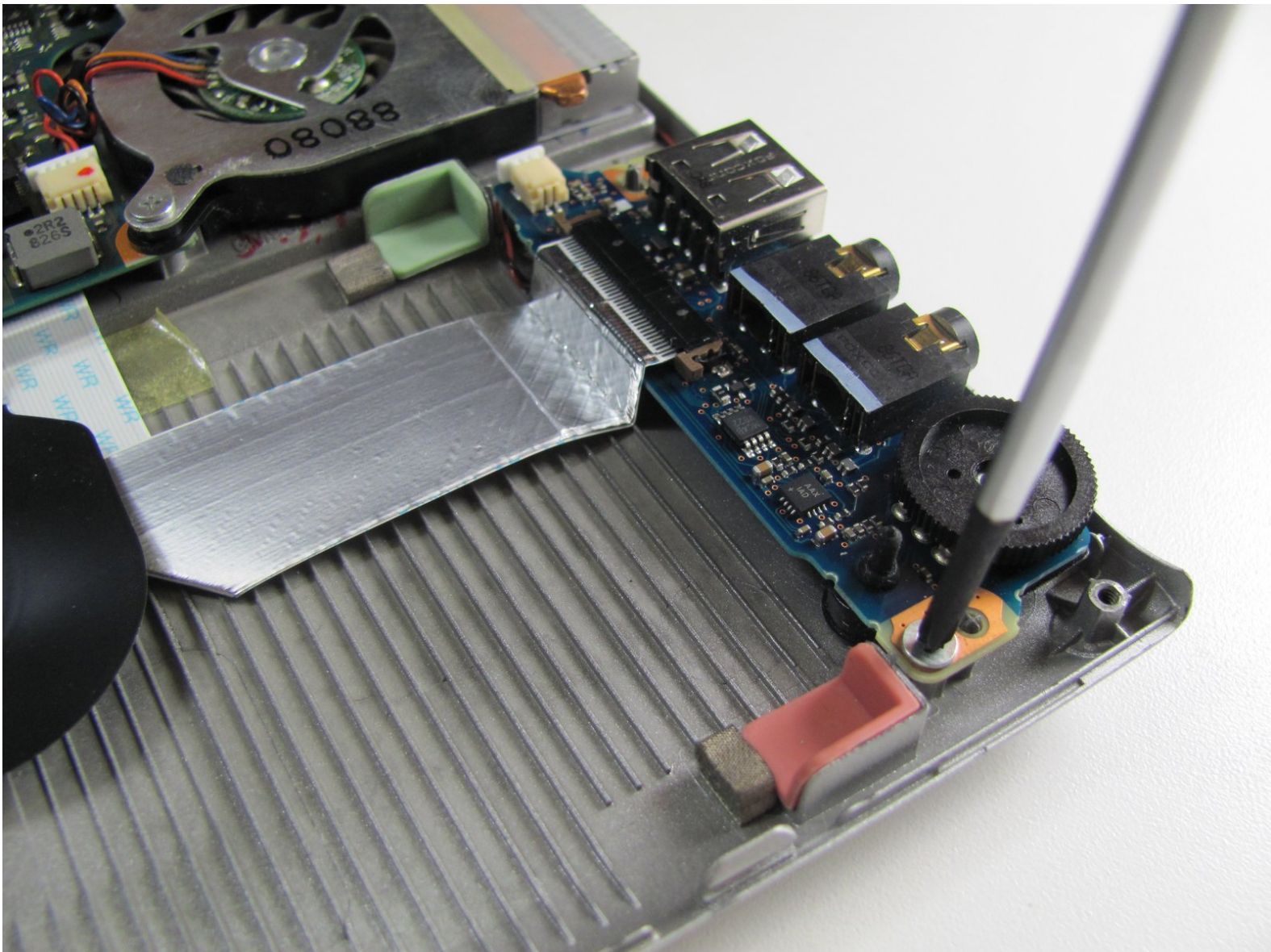




Toshiba Portege R500 Audio/USB Port Replacement

In this guide we will replace the audio/usb port found on the left hand side of the laptop when you are using it.

Written By: JRJones

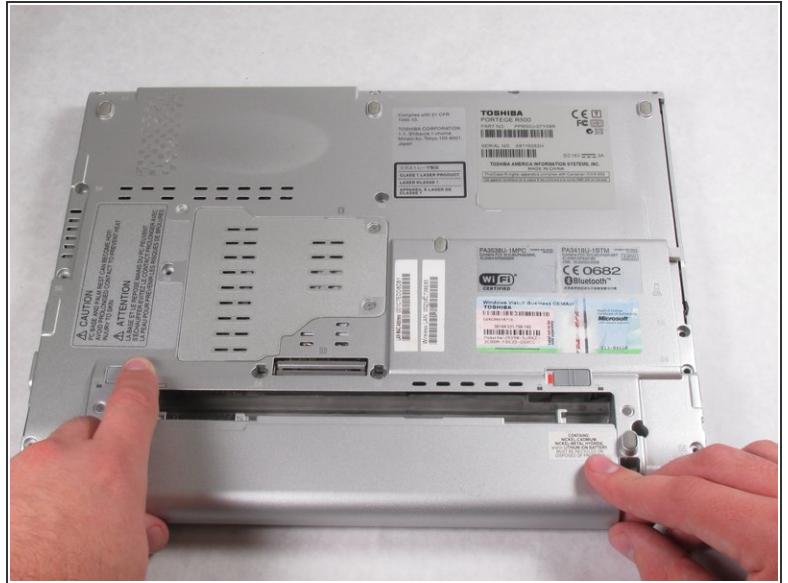
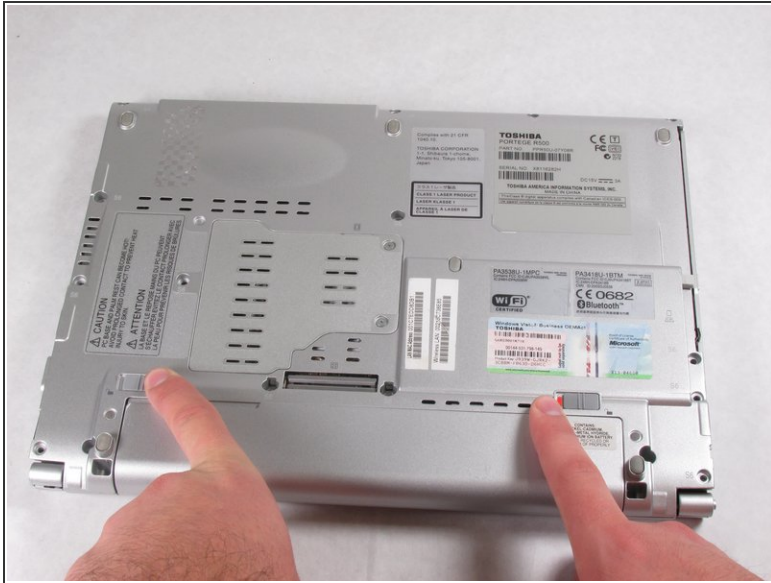






TOOLS:

- [Phillips #00 Screwdriver](#) (1)
 - [iFixit Opening Tools](#) (1)
-

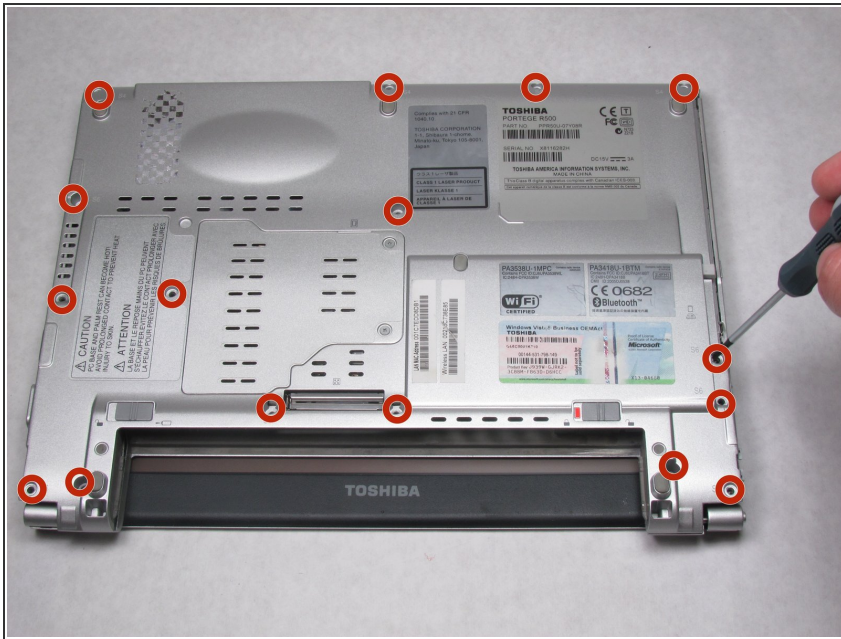
Step 1 — Battery



 Make sure the device is off to prevent data loss.

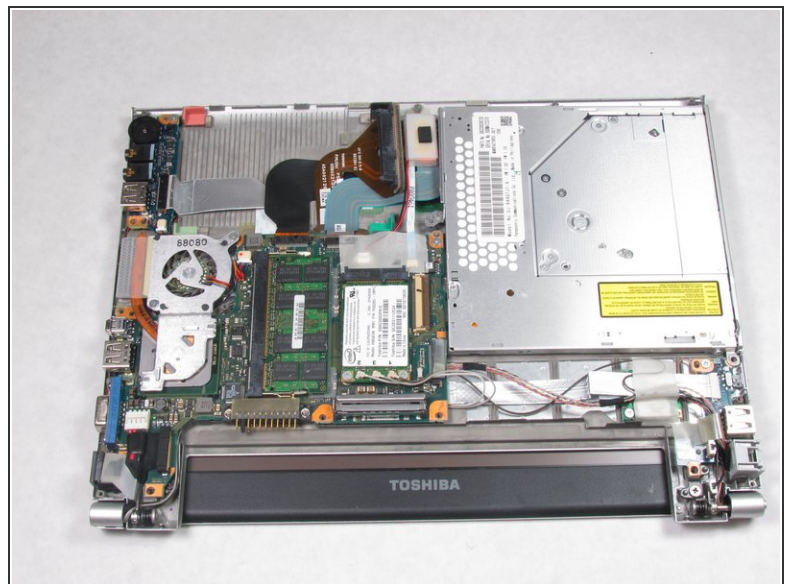
- Slide both latches to the unlocked position to release the battery.
-  Switch the latch on the right to reveal red. The latch on the left needs to be held.
- Pull the battery toward you while holding the left latch.

Step 2 — Audio/USB Port



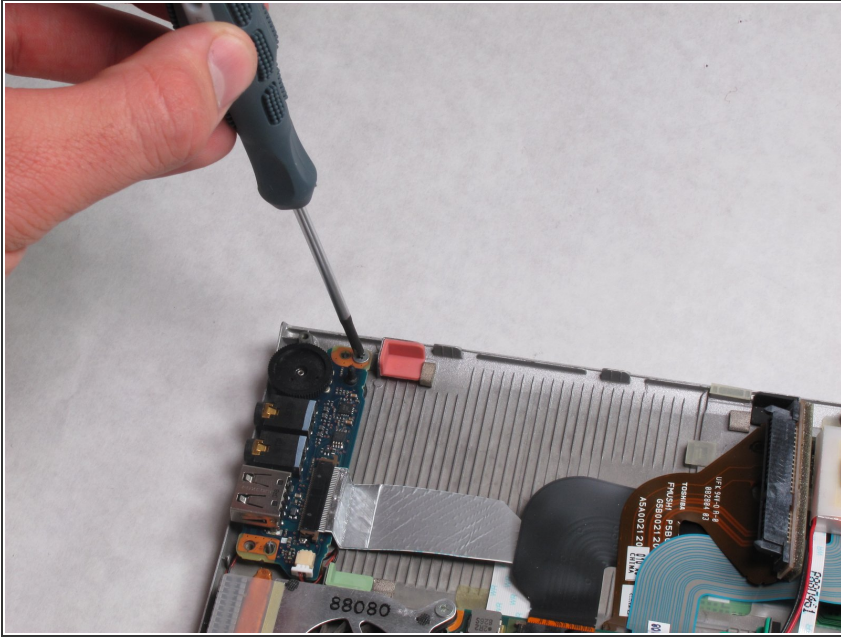
- Remove the sixteen screws at the locations shown with the Phillips 00 screwdriver.

Step 3



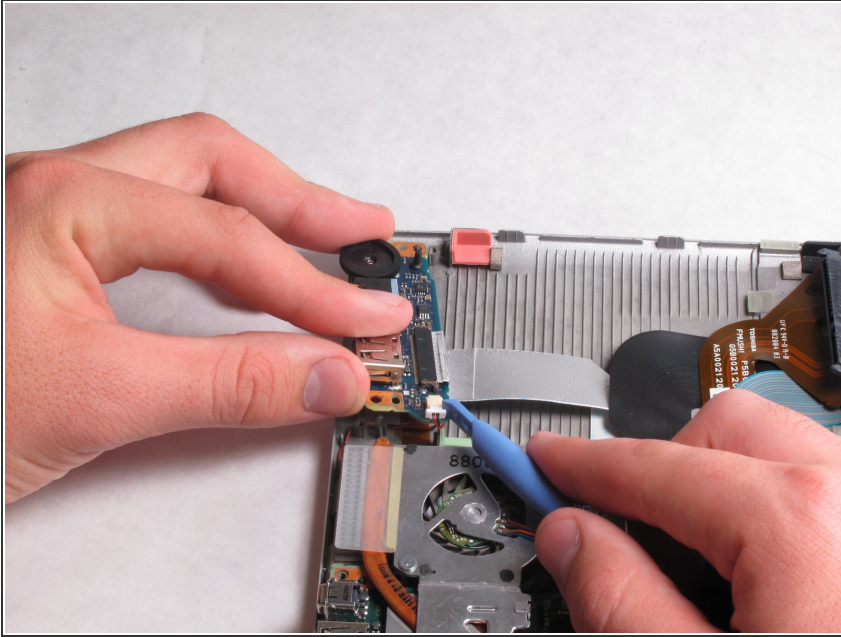
- Pull up on the back casing and remove it, revealing the audio/usb port.

Step 4



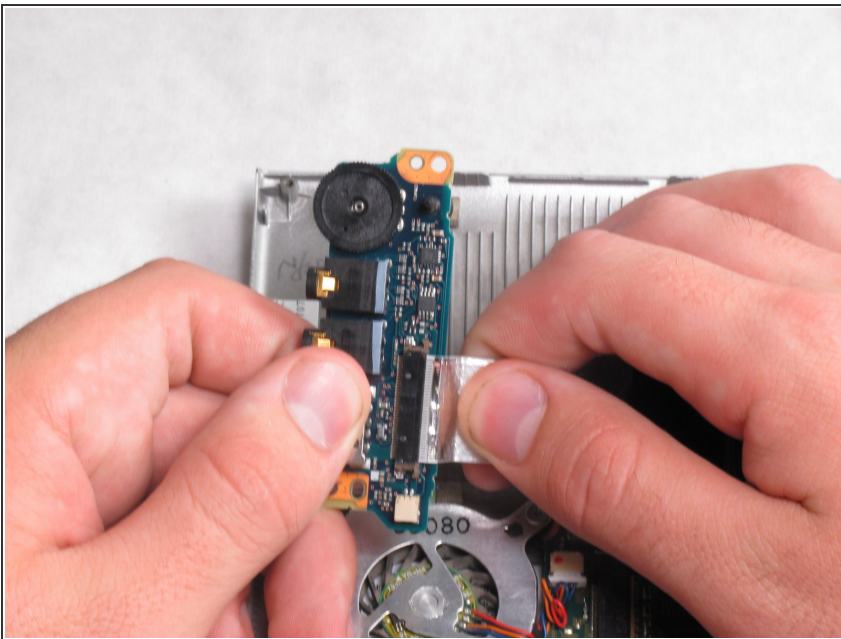
- Remove the single 4 mm screw holding the port in place with the Phillips 00 screwdriver.

Step 5



- Use the plastic opening tool to disconnect the port from its power source on the laptop. This will be the wire connector with the white connection.

Step 6



- Remove the ribbon cable from the port to free it from the laptop.
- ⓘ Be careful when reconnecting the ribbon cable, it can be difficult.

To reassemble your device, follow these instructions in reverse order.