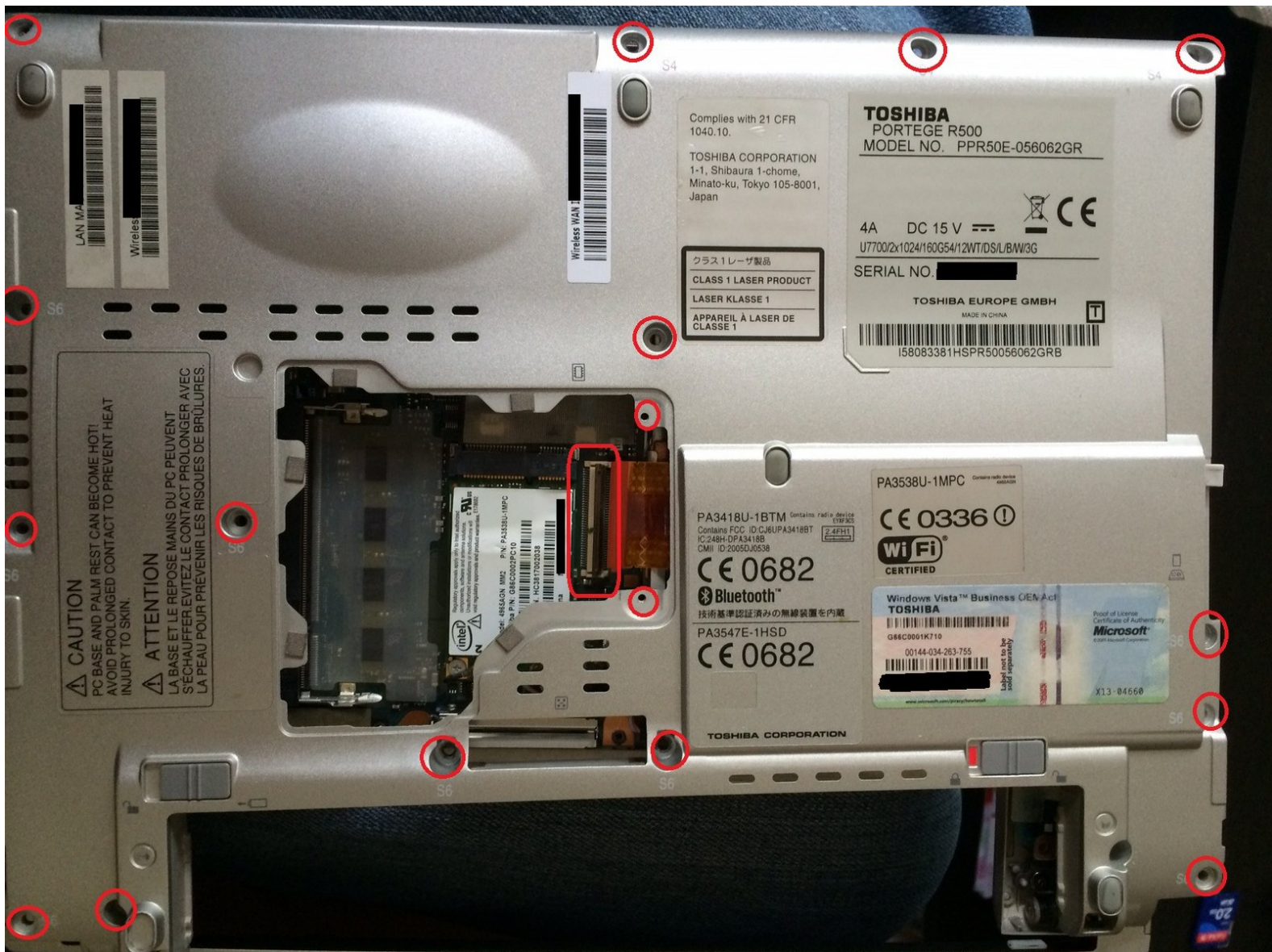




Toshiba Portege R500 Keyboard Replacement

Guide to replace a Portege R500 Keyboard

Written By: JayKoBa



INTRODUCTION

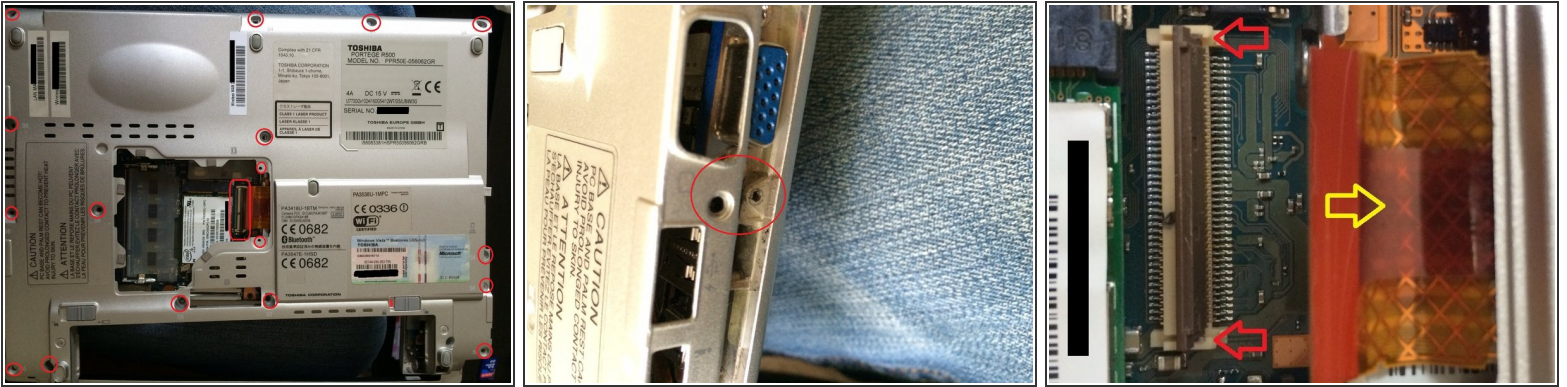
Guide to replace a Portege R500 Keyboard



TOOLS:

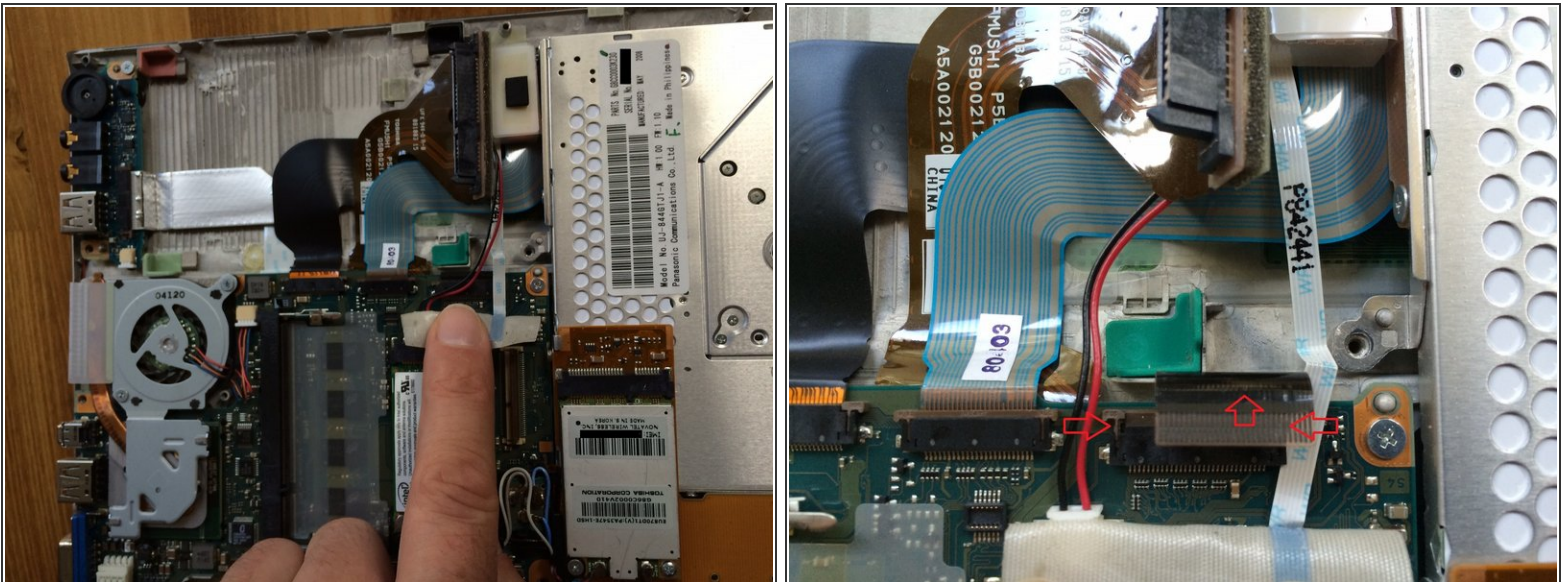
- [Pro Tech Toolkit](#) (1)
 - [Heat Gun](#) (1)
-

Step 1 — Keyboard



- After removing the doors and battery, remove the screws securing the lower case.
- Disconnect the keyboard cable.

Step 2



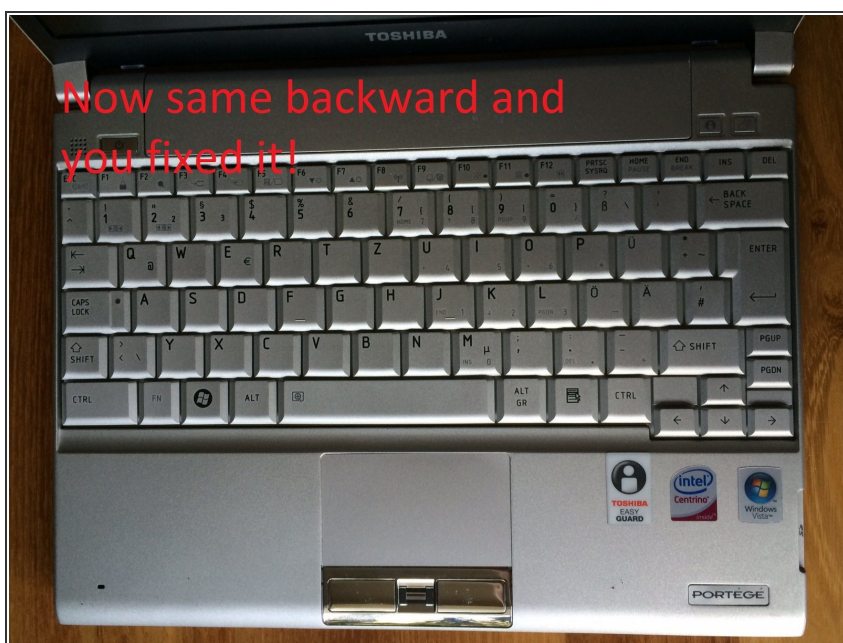
- Disconnect the trackpad cable

Step 3



- Heat the keyboard to loosen the adhesive.
- Pry the keyboard up.

Step 4



- Follow the above steps in reverse to install a new keyboard.

To reassemble your device, follow these instructions in reverse order.