



Toshiba Portege R700-S1312 Fan Replacement

This guide will teach you how to safely remove your laptop's cooling fan in order to replace it.

Written By: Terail Clonts



**TOOLS:**

- [Phillips #00 Screwdriver](#) (1)

**PARTS:**

- [Toshiba Portege R700-s1312 Laptop CPU Cooling Fan](#) (1)

Step 1 — Battery



- Locate the battery on the backside of the laptop. The battery is usually located at the bottom.

Step 2



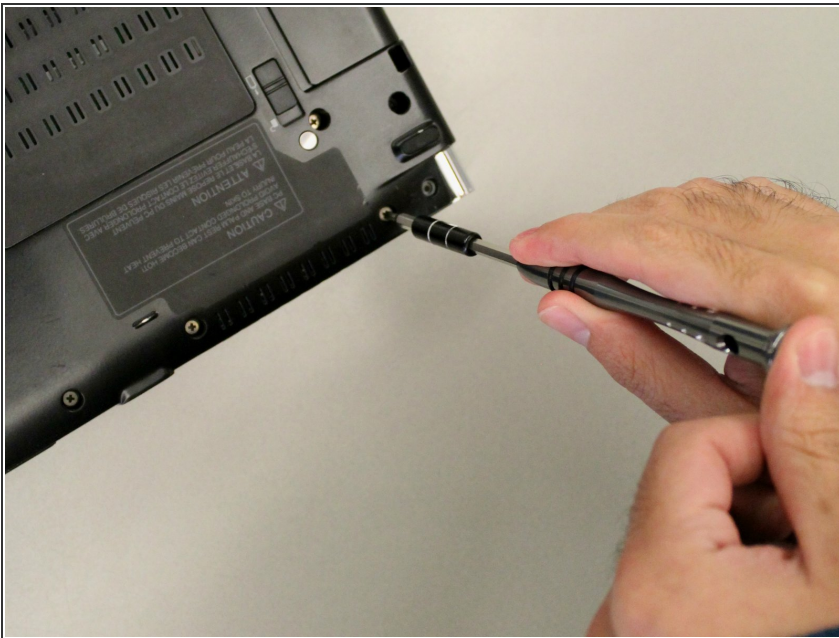
- Locate the battery lock button and push it towards the unlock position.

Step 3



- Hold the next lock in the unlock position. Simultaneously pull the battery towards you.

Step 4 — Fan



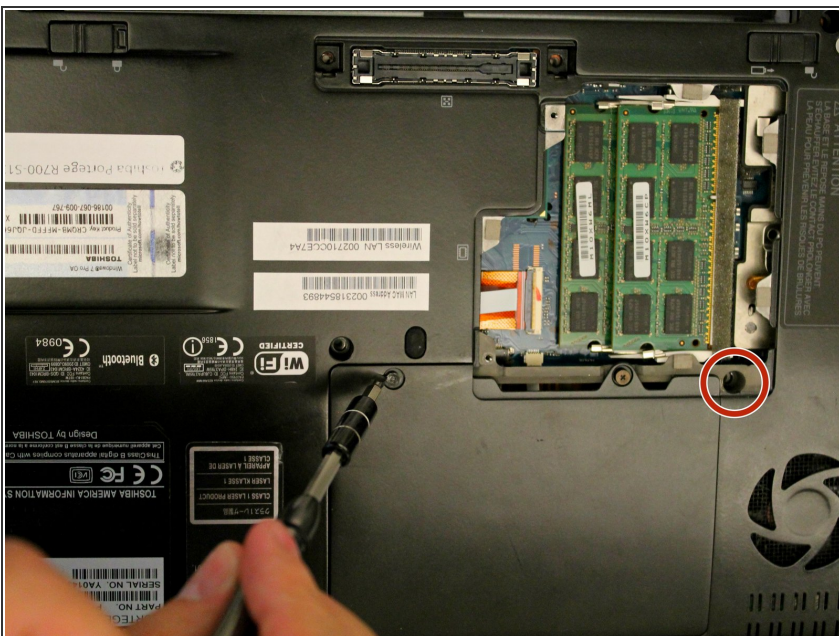
- Begin by removing 14 70mm screws from the back cover of the laptop using a Phillips #00 Screwdriver. Do not attempt to remove the back cover just yet though.

Step 5



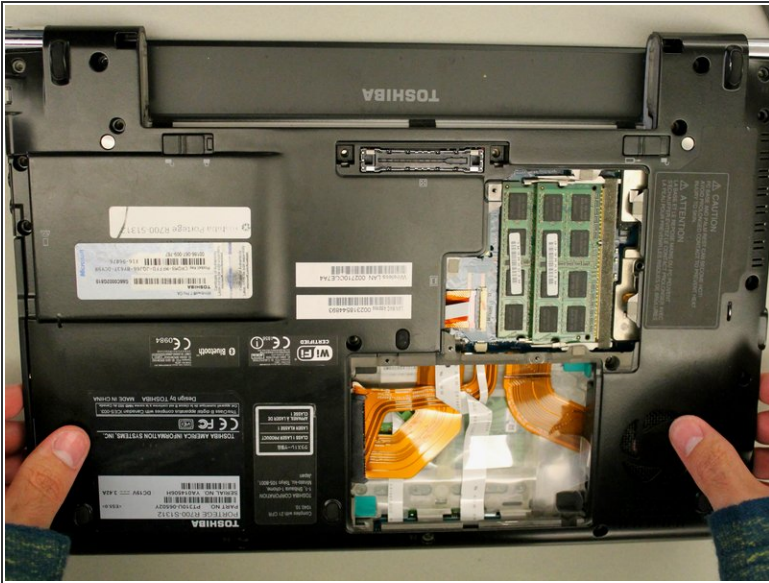
- Next, using a Phillips #00 Screwdriver unscrew 2 40mm screws from the RAM cover, and remove the RAM cover.

Step 6



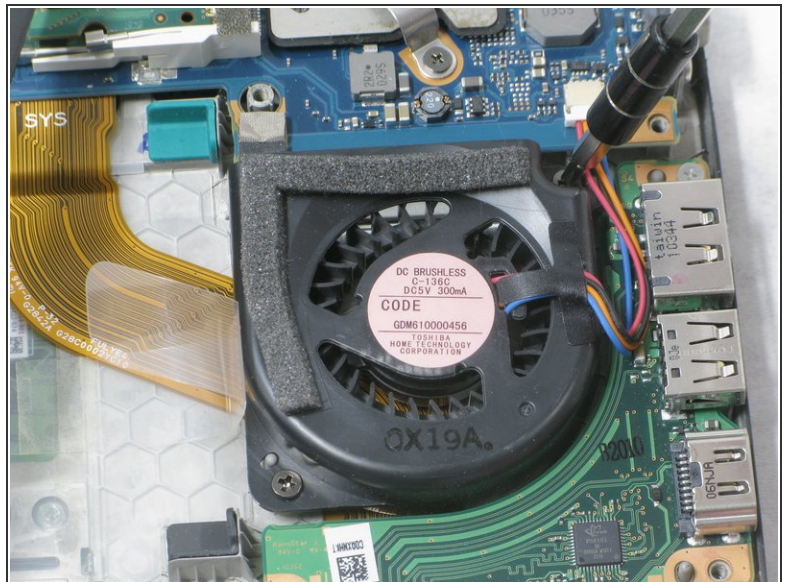
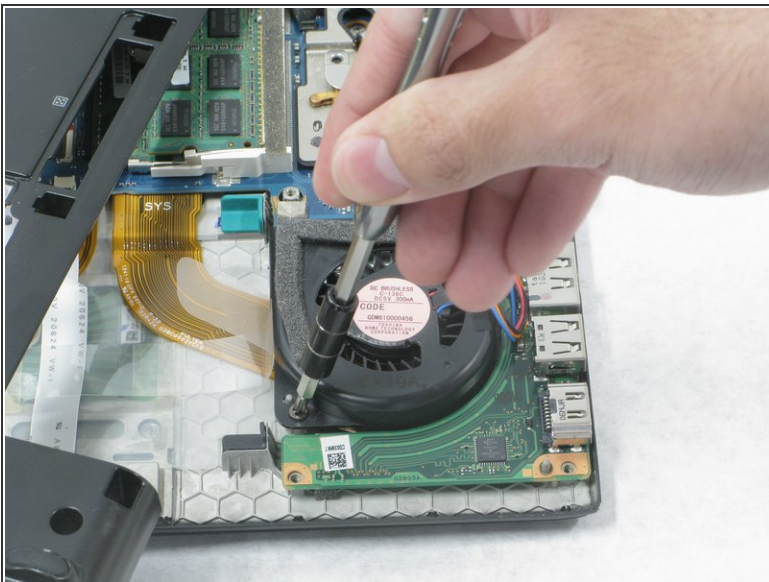
- Next, unscrew 2 40mm screws using a Phillips #00 Screwdriver. The back cover will now be able to be removed with greater ease. Note the previously covered 70mm screw illustrated by a red circle on the image.

Step 7



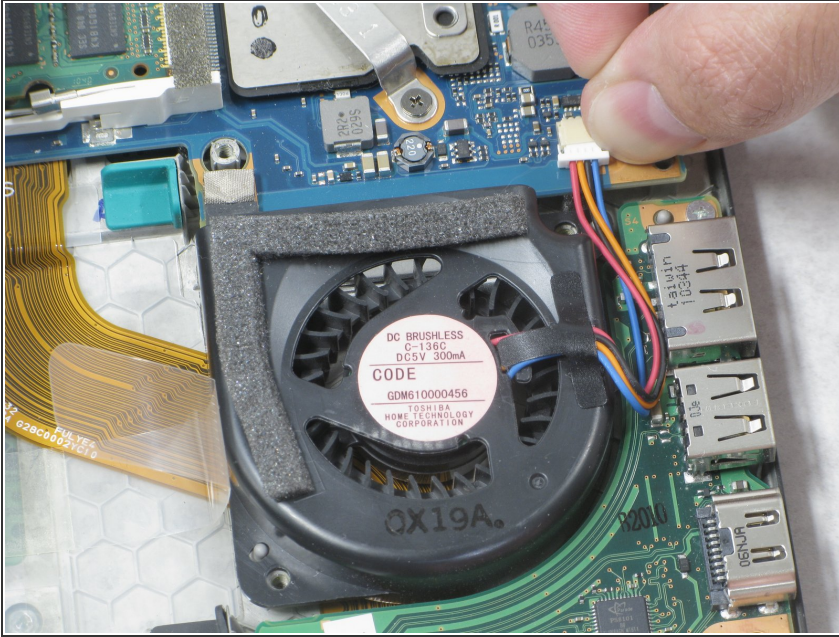
- The back cover of the laptop can now be removed by gently lifting its edges with your hands. Avoid abrupt removal of the back cover because it is attached internally. Move the cover to the side and the fan will now be visible.

Step 8



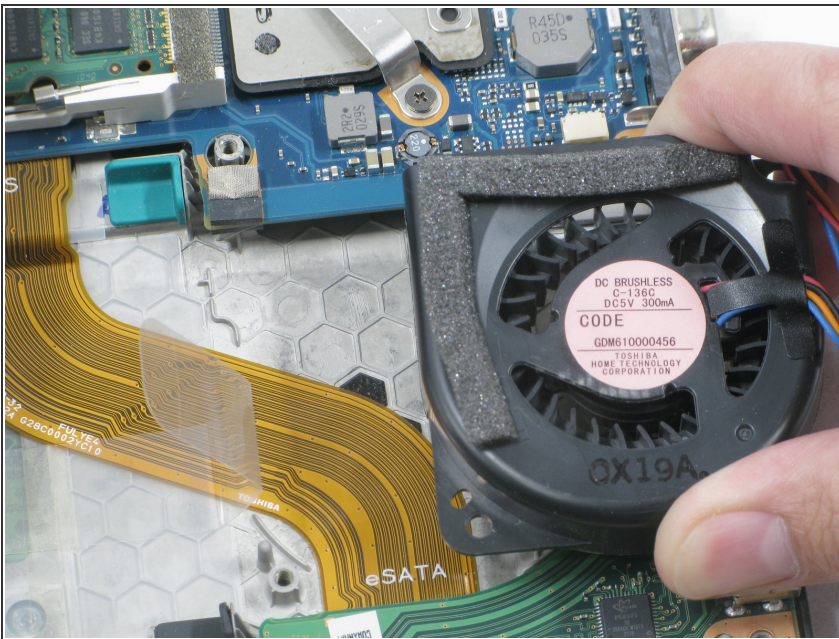
- Remove the two 50mm screws holding down the fan using a Phillips #00 screwdriver.

Step 9



- Disconnect the fan's power cables from the motherboard by gently pulling the white connector towards the fan and away from the motherboard.

Step 10



- You can now safely remove the fan completely and replace it with your replacement fan.

To reassemble your device, follow these instructions in reverse order.