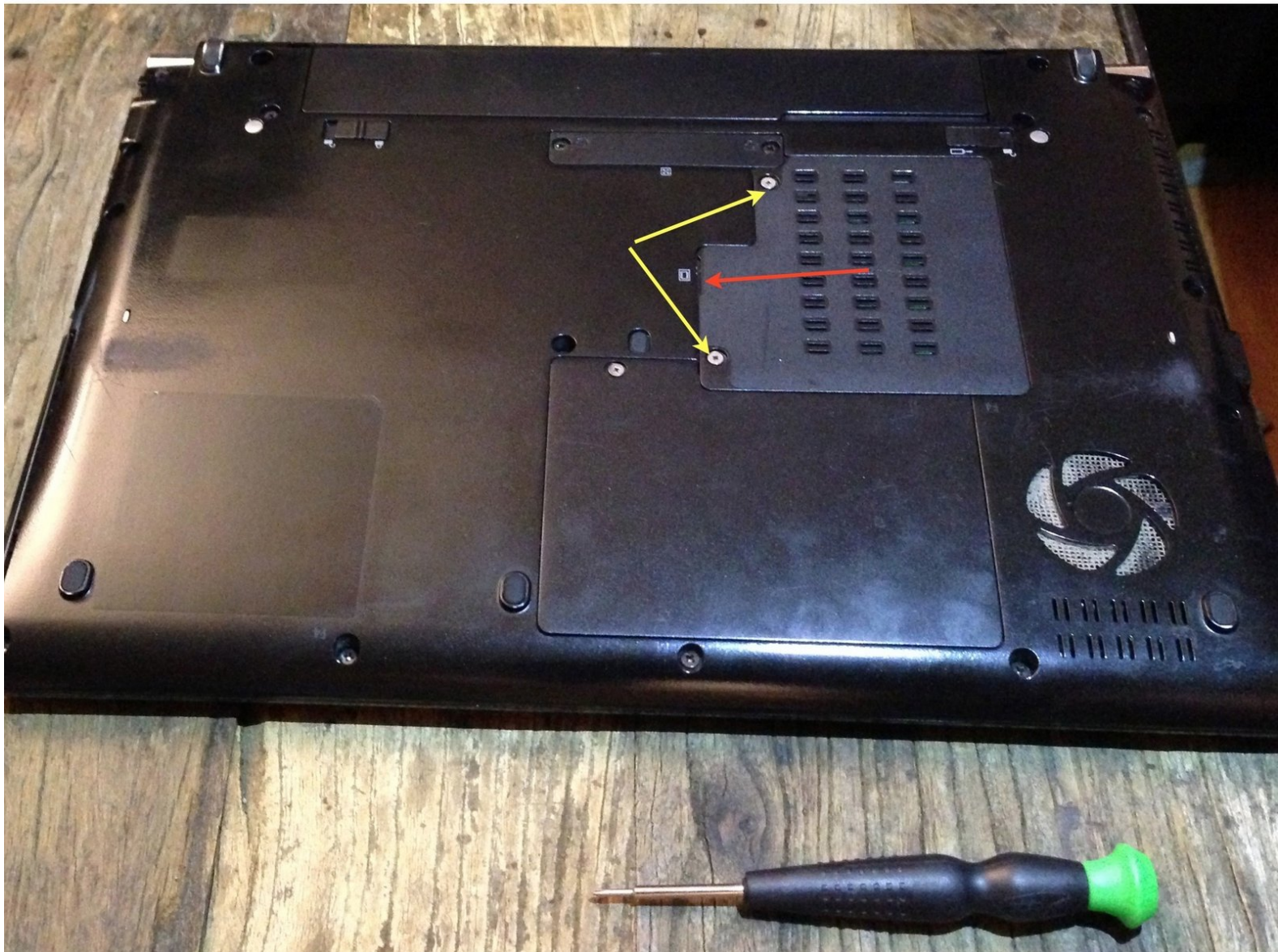




Toshiba Portege R705-P25 RAM Replacement

This is a guide for installing or replacing system memory.

Written By: Dustin Slade



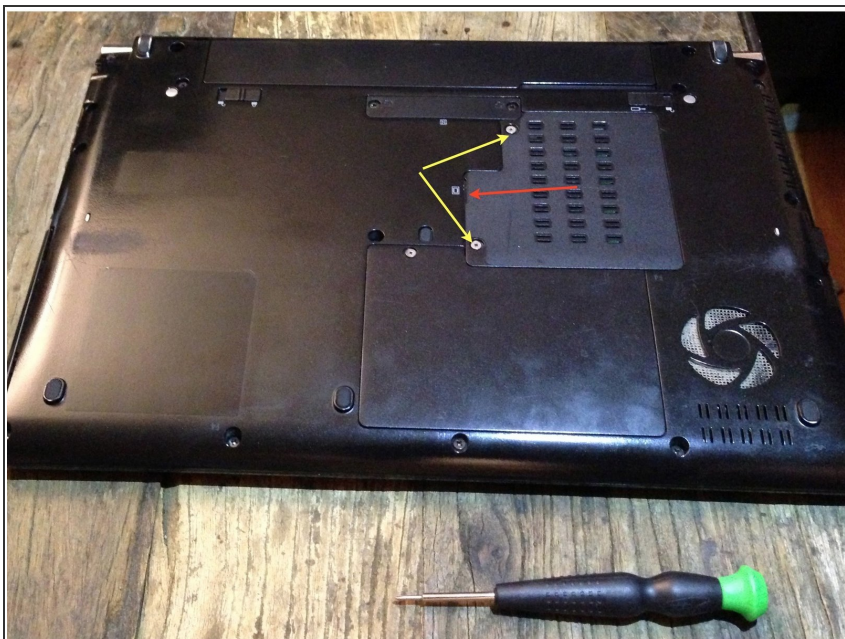
**TOOLS:**

- [Phillips #00 Screwdriver](#) (1)

**PARTS:**

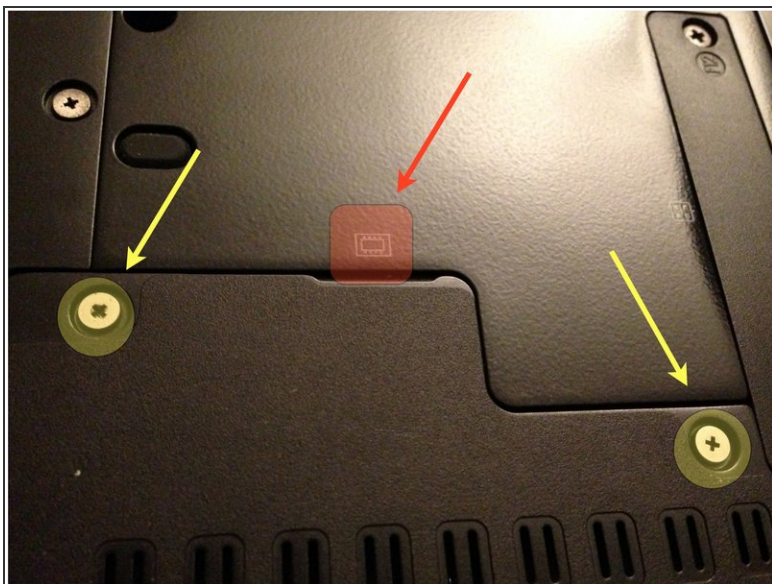
- [PC3-10600 8 GB RAM Chip](#) (1)
- [PC3-10600 4 GB RAM Chip](#) (1)

Step 1 — RAM



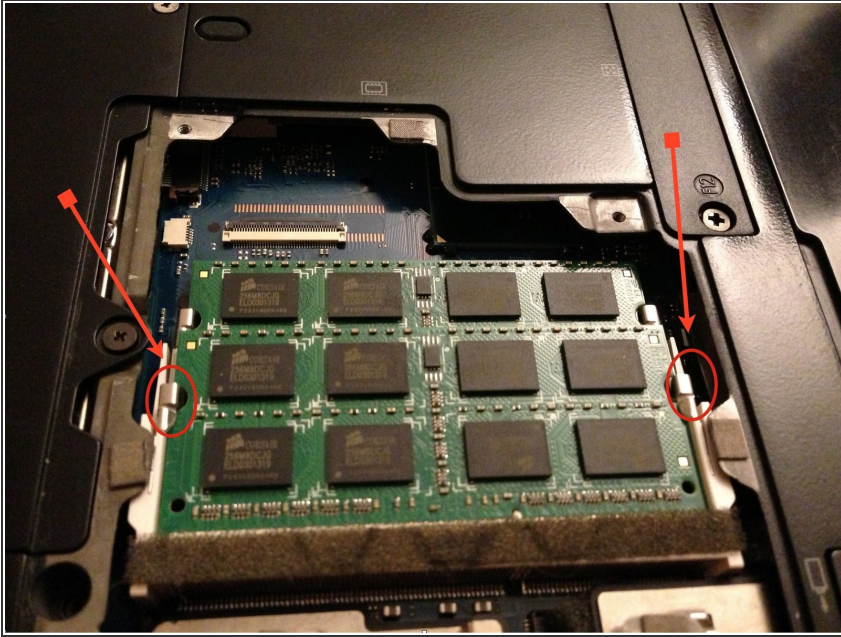
- Power off your machine and turn it over. Locate the RAM panel on the back of the laptop.

Step 2



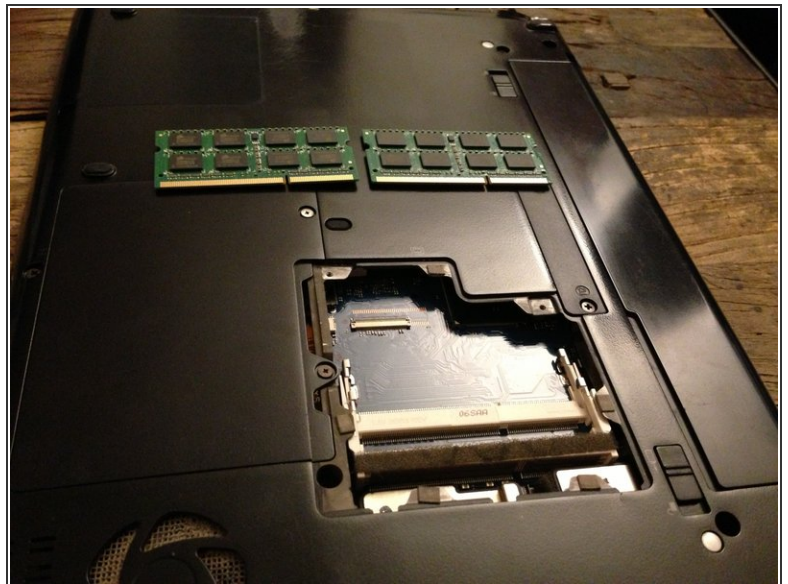
- Using the small Phillips head screwdriver, remove the two screws highlighted in yellow.
- Remove the panel by lifting from the red indicated area.

Step 3



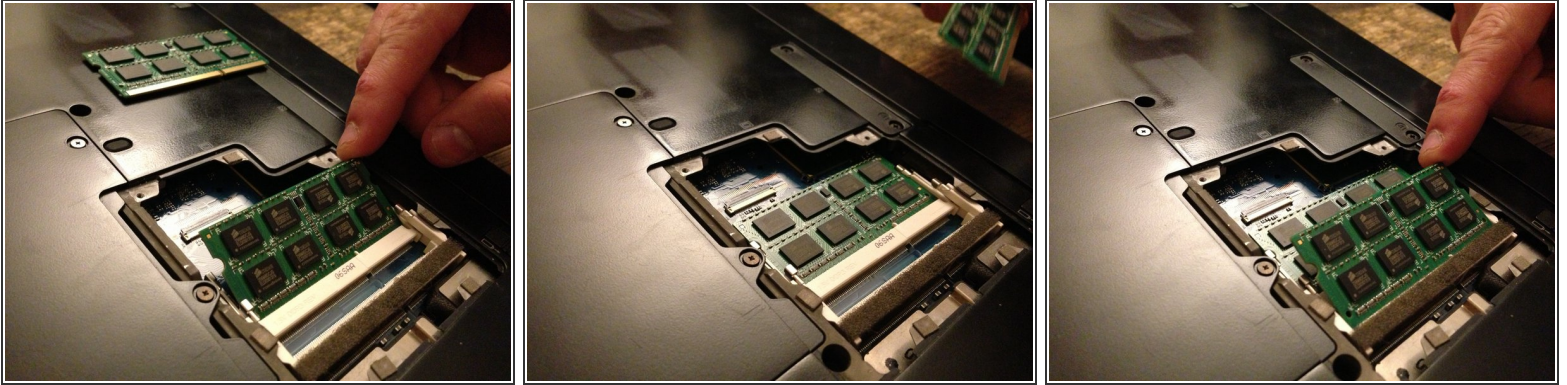
- Ground yourself appropriately by touching a metal object. Locate the tabs on either side of the top RAM module marked by the red arrows. Pull them apart simultaneously to unlock the RAM module.

Step 4



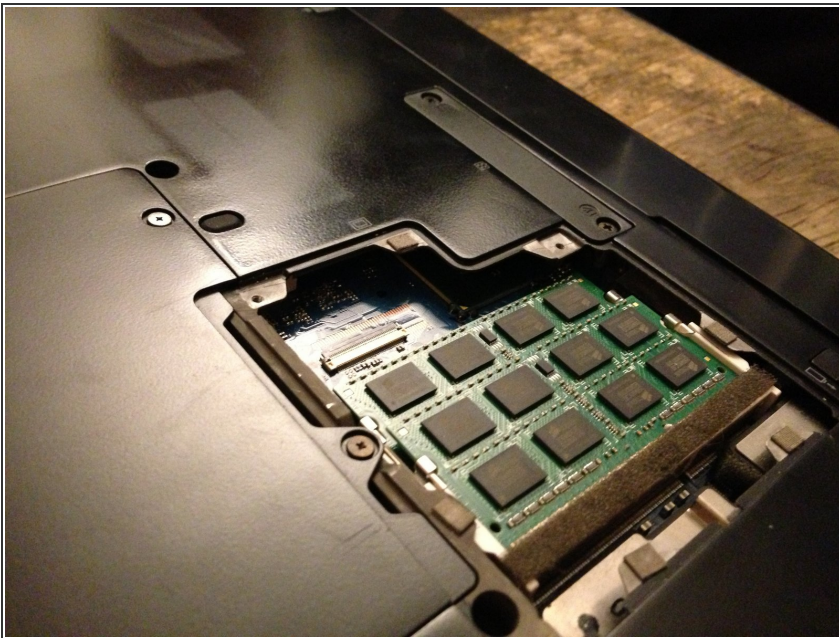
- After freeing the RAM by pulling the tabs, it will pop up and can be pulled directly out. Repeat removal steps for lower RAM step if applicable.

Step 5



- To insert the first new RAM module, locate the lower RAM bay and place the module diagonally into the slot. Push the module down into the laptop until it snaps into place. Repeat this step for the top module.

Step 6



- Once the RAM is installed flush to the laptop backing, insert and screw in cover. You have now completed the replacement.